

## Sheath Lines Are Eased, Feminine Look Prevails

Fashion relaxes and glorifies the slim line for spring '57. Attractive shaping and softened slenderness characterize the newest styles, pointing up the importance of a look that's sometimes called "pretty," sometimes "lady-like" and then again, "feminine." By any name, the look is flattering, and this season it's the height of fashion.

Many significant trends emerge as ways of expressing this look. Outstanding—and charming—is the cape, which has just about taken over the fashion world. Dresses, costumes, separates, suits, coats and toppers display the cape influence in many forms.

There are cape-like flounces at the shoulder line—flirtings as the flatter of a fan—cape collars, detachable capelets, cape jackets, and of course, three-quarter and full-length capes. Cocoon shapes look new.

PRETTY evidence of the trend to gently feminine fashions is seen in the spring liking for shirtwaist dresses. News here is the softening of classic styles—through the use of lantern-shaped sleeves, for example.

Appearing as another major trend is the softened skirt. Usually somewhat longer this spring, skirts move away from severe sheath lines to the pleated, pleated, draped or paneled silhouette. In the "Dutch Boy" or Flemish skirt for suits and dresses, pleats or gathers provide easy roundness just below the waistline and taper in at the hem.

Other attractive ways of developing skirt interest are tunics, harem hemlines, back or front fullness and attached curving panels.

New interpretations of the basically-slim line provide a variety of bodice treatments. Rounding the top of the silhouette, for symmetry with easier skirts, is frequently achieved by the use of belted sleeves.

The blouson, or bloused top, looks refreshing in combination with bloused sleeves, and bloused or pleated backs continue important.

**'Wash-Wear' Togs Bigger Than Ever**  
Wash-and-wear togs are expected to be bigger than ever in men's wear, this spring and summer. Made in crests, sou-walkers and suits resembling tropical worsteds, they will come in a wide range of light, medium and dark shades. Construction has been improved, and some blends weighing as little as 5½ ounces a yard are being used.

Newly introduced in this field are the "automatic wash-and-wear" suits for which it is said that the only effort needed to keep one trimly pressed and fresh is the energy it takes to place it in the automatic washer and modern tumble dryer. These suits are reported ready to slip on, neatly pressed, when they emerge from the dryer.

His model was his wife, Rose Damico. The golden auburn shade of her hair with an added slight tinge of pink certainly was a beautiful complement to her skin tones. The hairdo was a combination of the "Swan Look" and the "My Fair Lady" look which is so popular this season.

Tony likes not just to select a color for the hair, but to choose a color that complements one's skin tones.

Emie's Salon also has Harry Manooogian who has won hairstyling awards in the nation since 1955.

**Pretty Pinnings**  
Bar pins with pendants and floral-bouquet pins, set with pearls and pastel stones, look pretty for spring.

and of course  
**A NEW HAIRDO!**  
SPECIALIZING  
in  
tinting  
bleaching  
hair cutting  
Parking in the rear  
Open evenings by appointment

**LePard's Salon**  
279 S. Woodward MI 8-1285

The high empire line is now lowered, placing the "artificial" waist at a point two or three inches above the natural waistline. Sometimes both the modified-empire and the normal waist are defined.

Waistlines are marked by belts, cummerbunds or draping.

**Necklines Softened**  
Necklines, too, get soft treatment. Scoops and bateau are gentled by gathers, draping or bows. The high-in-front, low-in-back neckline often has a bow or streamer as a finishing touch.

Spring's varied styles are interpreted in a wealth of fabrics and colors. Significantly for the femininity of fashion, silk exercises a great influence, appearing in many textures and many blends.

Soft and drapable, too, are wools and knits in tissue weights. Twosds often have an open, almost lacey weave, and even the boldest of twosds take the lady-like touch of femine pastel colors.

Soft and drapable, too, are wools and knits in tissue weights. Twosds often have an open, almost lacey weave, and even the boldest of twosds take the lady-like touch of femine pastel colors.

Soft and drapable, too, are wools and knits in tissue weights. Twosds often have an open, almost lacey weave, and even the boldest of twosds take the lady-like touch of femine pastel colors.

Soft and drapable, too, are wools and knits in tissue weights. Twosds often have an open, almost lacey weave, and even the boldest of twosds take the lady-like touch of femine pastel colors.

Soft and drapable, too, are wools and knits in tissue weights. Twosds often have an open, almost lacey weave, and even the boldest of twosds take the lady-like touch of femine pastel colors.

Soft and drapable, too, are wools and knits in tissue weights. Twosds often have an open, almost lacey weave, and even the boldest of twosds take the lady-like touch of femine pastel colors.

Soft and drapable, too, are wools and knits in tissue weights. Twosds often have an open, almost lacey weave, and even the boldest of twosds take the lady-like touch of femine pastel colors.

Soft and drapable, too, are wools and knits in tissue weights. Twosds often have an open, almost lacey weave, and even the boldest of twosds take the lady-like touch of femine pastel colors.

Soft and drapable, too, are wools and knits in tissue weights. Twosds often have an open, almost lacey weave, and even the boldest of twosds take the lady-like touch of femine pastel colors.

Soft and drapable, too, are wools and knits in tissue weights. Twosds often have an open, almost lacey weave, and even the boldest of twosds take the lady-like touch of femine pastel colors.

Soft and drapable, too, are wools and knits in tissue weights. Twosds often have an open, almost lacey weave, and even the boldest of twosds take the lady-like touch of femine pastel colors.

Soft and drapable, too, are wools and knits in tissue weights. Twosds often have an open, almost lacey weave, and even the boldest of twosds take the lady-like touch of femine pastel colors.

Soft and drapable, too, are wools and knits in tissue weights. Twosds often have an open, almost lacey weave, and even the boldest of twosds take the lady-like touch of femine pastel colors.

Soft and drapable, too, are wools and knits in tissue weights. Twosds often have an open, almost lacey weave, and even the boldest of twosds take the lady-like touch of femine pastel colors.

Soft and drapable, too, are wools and knits in tissue weights. Twosds often have an open, almost lacey weave, and even the boldest of twosds take the lady-like touch of femine pastel colors.

Soft and drapable, too, are wools and knits in tissue weights. Twosds often have an open, almost lacey weave, and even the boldest of twosds take the lady-like touch of femine pastel colors.

Soft and drapable, too, are wools and knits in tissue weights. Twosds often have an open, almost lacey weave, and even the boldest of twosds take the lady-like touch of femine pastel colors.

Soft and drapable, too, are wools and knits in tissue weights. Twosds often have an open, almost lacey weave, and even the boldest of twosds take the lady-like touch of femine pastel colors.

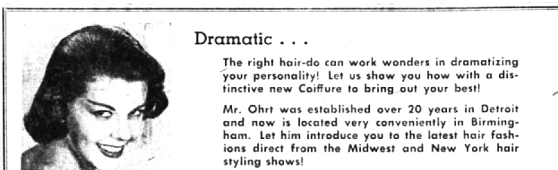
Soft and drapable, too, are wools and knits in tissue weights. Twosds often have an open, almost lacey weave, and even the boldest of twosds take the lady-like touch of femine pastel colors.

Soft and drapable, too, are wools and knits in tissue weights. Twosds often have an open, almost lacey weave, and even the boldest of twosds take the lady-like touch of femine pastel colors.

Soft and drapable, too, are wools and knits in tissue weights. Twosds often have an open, almost lacey weave, and even the boldest of twosds take the lady-like touch of femine pastel colors.



**MODEL, SOCIAL CHAIRMAN AND COMMENTATOR**—all so lovely in the spring fashion parade. Betty Lou Shaw has that "Grace Kelly look" in a silk organza with embroidery of shaded green rose and yellow from Mary Helsgan's. Casting a smile of approval are Barbara Oglesby (center) and commentator Brenda Isby (right) at Oakland Hills Country club's fashion show. Models walked through a garden of daffodils surrounded by a white picket fence to add that touch of spring.



**Frank Ohrt hair stylist**  
266 E. Maple, Birmingham (1 block E. of Woodward) MI 4-6440

**They're Here!! Upholstery Fabrics**  
By The Truckload (More than you'll see anywhere!)

TWEEDS	HEAVY TEXTURES
BROCADES	100% BELGIUM LINENS
TAPESTRIES	NYLON VELVETS
FORTISANS	MATELLESSES

ANTIQUE SATIN  
CORDUROY  
QUILTED CHINTZ  
HAND-SCREENED PRINTS

**\$1.85 2.50 5.00 YD.**  
LESS THAN HALF PRICE!

**Calico Corners**  
"SECONDS" of the finest fabrics

1610 S. Telegraph  
Open Monday and Friday Evenings Till 9  
FE 2-9163

**and of course**  
**A NEW HAIRDO!**  
SPECIALIZING  
in  
tinting  
bleaching  
hair cutting  
Parking in the rear  
Open evenings by appointment

**LePard's Salon**  
279 S. Woodward MI 8-1285

Floppy rose on faille band ... 9.95	Tiny bunched violets with mossy velvet ... 3.95	Daisy band with pop-up daisy ... 3.95	Wild strawberries and leaves ... 4.95	Cherries in a cluster on pique band ... 5.95
-------------------------------------	---	---------------------------------------	---------------------------------------	--

**Travel Well**  
Especially good for travelers are the many colognes and toilet waters now available in aerosol containers which are unbreakable and easy to use.

**ACCESSORIES TO STYLE**  
Spring accessories for men, generally smaller and neater, include many reproductions of links, clips and tie bars that were the classics of Grandpa's day. Designs will be more intricate and keyed to specific themes.

**the dress is only the beginning**  
Good grooming means top to toe perfection... and it's worth every effort you make to meet the necessary requirements. Because... it gives you confidence, assurance, grace and poise—all the things you admire and are admired by others.

Your MERLE NORMAN demonstrator makes all this possible by showing you, free, the correct way to care for your valuable complexion. Clear and glowing—the way young complexion should always look.

Treat yourself to this promising new adventure today!

**MERLE NORMAN** • cosmetics • jewelry • Gifts  
233 E. Maple Ave., MI 4-2336

**Cosmetic Gifts**  
TO COMPLEMENT YOUR SPRING OUTFIT

Want to be the spring dream of a certain lady? Then delight her with a perfume gift... beautifully packaged for Spring giving, every scent for every miss.

- REVLON
- CIRO'S
- YARDLEY
- PRINCE MATCHABELLI
- DOROTHY GRAY
- DU BARRY

MI 6-1015  
HOURS: 9-11 daily  
9:30-10 Sundays

**ADAMS PHARMACY**  
(formerly Wesley Drugs)  
1955 S. WOODWARD, NEAR 14 MILE

**FOR SPRING... the loveliest fashions this side of MATERNITY**

While you wait, be a fashionplate! Choose from our group of moderately priced maternity fashions for everything from dressy to at-home wear.

If you're tired of "Hum-Drum" maternity outfits, you'll perk up when you see our wonderful and complete spring selections...

- SEPARATES  
—including smart sportswear, jackets, skirts, slacks, pedal pushers, Bermudas, shorts, playsuits.
- DRESSY SPRING SUITS
- LINGERIE  
—girdles, garter belts, bras, panties, slips.

24 E. Huron  
PONTIAC  
317 N. Washington (near 4th Street)  
ROYAL OAK

**The Village of MATERNITIES**

**The Village Store**  
205 First St., Birmingham, Mich.  
24 Boulevard, Grand St. Park, Mich.

**They go to your head**

Our demi-hats blooming in a garden of flowers and spring's fruits... Violets and mistosa mingle with cherries and wild strawberries and are caught by wisps of veiling and other stuffs, making of you a woodland sprite all impatient for spring.