

### Quarton PTA To Elect Officers, Hear Dr. Ireland

Election of officers and a timely talk by the superintendent of schools will headline the Quarton PTA meeting Wednesday at 8 p.m. Dr. Dwight B. Ireland will speak to the parents and teachers on

"Meeting the School Needs in Birmingham", surveying the present situation and telling of plans for the future.

Mrs. John Blaisdell, PTA president, will conduct the election. Mrs. Robert Thompson and Mrs. Clemens Ludden are co-chairmen of the hospitality committee, which will serve refreshments after the meeting.

## You Are Cordially Invited . . . to Attend a Free Lecture entitled

### "Christian Science: Its Answer to Man's Need in the Atomic Age"

by  
**MARY WELLINGTON GALE, C.S.B.**  
OF SAN FRANCISCO, CALIF.

Member of the Board of Lecturers of The Mother Church, The First Church of Christ, Scientist, in Boston, Massachusetts.

**CHURCH EDIFICE**  
Chester at Willets  
Ample Parking in the Vicinity

Monday, March 25th, 1957 at 8:15 o'clock

This Lecture is given under the auspices of  
First Church of Christ, Scientist, Birmingham

#### RESERVED SEAT

If this is the first Christian Science lecture you have attended, we will give a seat for you in the auditorium until ten minutes before the lecture. Just present this coupon to any usher at the door.

## NOTICE OF SPECIAL ELECTION

TO THE QUALIFIED ELECTORS OF THE SCHOOL DISTRICT OF THE CITY OF BIRMINGHAM, OAKLAND COUNTY, MICHIGAN:

NOTICE IS HEREBY GIVEN, that a special election will be held in the School District of the City of Birmingham in the County of Oakland, and the State of Michigan, on Monday, the 25th day of March, 1957, from 7:00 o'clock A.M. to 8:00 o'clock P.M., Eastern Standard Time, to vote upon the following proposition:

Shall the limitation on the total amount of taxes which may be assessed each year against property in the School District of the City of Birmingham, County of Oakland, State of Michigan, for all purposes except taxes for the payment of interest and principal on obligations incurred prior to December 8, 1932, be increased as provided in Section 21 of Article X of the Constitution of Michigan, for a period of five (5) years from 1957 to 1961, both inclusive by 6 10ths of 1% (\$6.00 per \$1,000) of the assessed valuation as equalized, for the purpose of paying a part of the operating expenses of the school district?

NOTICE IS FURTHER GIVEN, that the voting places for said election will be as follows:

- Precinct No. 1—Adams School
- Precinct No. 2—Quarton School
- Precinct No. 3—Barnum School
- Precinct No. 4—Pierce School
- Precinct No. 5—Franklin School
- Precinct No. 6—Bloomfield Village School
- Precinct No. 7—Walnut Lake School
- Precinct No. 8—Birmingham High School
- Precinct No. 9—Torry School
- Precinct No. 10—Pembroke School
- Precinct No. 11—Beverly School

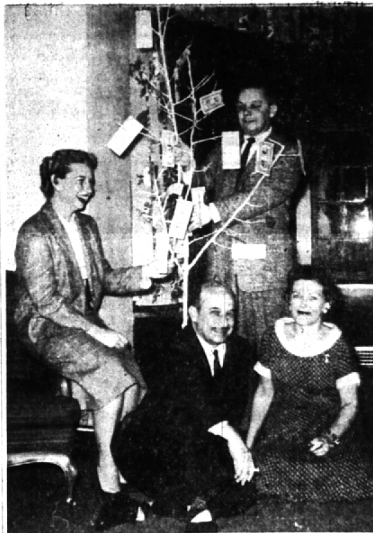
The following statement has been received from the County Treasurer as to previously voted increases in the total tax rate limitation affecting taxable property in the school district, to-wit:

I, Charles A. Sparks, County Treasurer of the County of Oakland, State of Michigan, do hereby certify that according to the records in my office, as of February 26, 1957, the total of all voted increases in the tax rate limitation about the 15 mills established by Section 21 of Article X of the Michigan Constitution, affecting taxable property in the School District of the City of Birmingham, in said county, is as follows:

Local Unit	Voted Increase	Years Effective
School District of the City of Birmingham, located in the Townships of Southfield, Troy, Bloomfield, West Bloomfield, City of Bloomfield Hills, City of Troy, City of Birmingham.	6.5 4.5 4.0	1950-1969 1953-1972 1954-1973
County School District of Oakland County	.50	1954-1969

Amos F. Gregory,  
Secretary of the Board of Education of said school district

Dated: March 1st, 1957



**NO POT OF GOLD** at the end of the rainbow—but a "money tree" which, with a treasure chest will be the center of attraction for the "Rainbow Dance" Saturday in celebration of St. Patrick's Day at Forest Lake country club. Mrs. Robert Walls (left), 700 Hipp Cross road, and E. L. Sandberg (right), 999 Pleasant, try to shake off a few samples, while Mrs. R. and Mr. W. back "in the shade of the old money tree." The evening's festivities will feature a buffet dinner followed by dancing to the Eddie Schick orchestra.

## Birmingham Musicals Plans Benefit Concert

For its annual scholarship benefit concert on March 20, at 8 p.m., in the Community House, Birmingham Musicals will present "Summer Cinderella", a "grass roots opera" written by Henrietta Bodycombe, and "The River of Stars", a cantata by Clarence K. Davidson.

Proceeds of the benefit will be used to provide partial scholarships for six young musicians who will attend summer music camps this coming season. The awards are given in recognition of exceptional musical talent and achievement.

**THE MEDIUM** of vocal talent found in the grass roots opera was first introduced to a Birmingham audience two years ago when Birmingham Musicals gave "Mummers" "The Old Maid and the Thief." This production was received with great enthusiasm, and there followed many requests for another entertainment of its kind.

Pressing the music of the musical drama ensemble, under the direction of Mrs. Elvin C. Greer, will present the cantata, "The River of Stars," written by Clarence K. Davidson. Mrs. Robert S. Clifton is to be the accompanist, Mrs. Robert H. Finney, narrator.

Mrs. Hawkins, whose soprano voice is well suited to the dramatic role of the Indian maid, graduated from the University of Michigan and has had leading roles in operas. She continued her studies in the graduate school at Juillard, and later studied with Greta Strindberg and served as soloist in the Park Avenue church in New York. At one time, she was a regular member of the Paul Whitman choir.

**MRS. BODYCOMBE**, writer of the words and music for "Summer Cinderella" will be at the piano for the musical production. Ida Johnson, soprano, will direct, and the four roles in the "Cinderella" cast will be sung by Mrs. Gerald McGee, Mrs. E. Wilson and Mrs. Alvin C. Greer.

Mrs. McGray, soprano, will sing the part of an attractive young lady from Vermont, and Mrs. Mollie, soprano, will sing as a bewitching, voice-making girl from Baltimore. Mrs. Wilson, contralto, becomes a covered, conservative society matron for the production, and Mrs. Stentz, contralto, is to sing the role of a hotel waitress.

**MRS. BEN F. WILSON** is general chairman for the event. Ticket committee members are Mrs. Joseph L. Williams, Mrs. A. Frye, Mrs. M. DeHart, H. Tate, Mrs. Herbert H. Gardner, Mrs. R. C. Stott, Mrs. Willis W. Dolan, Mrs. Rosse McManis, Mrs. Karl L. Brown, Mrs. Fred S. Gole, Mrs. James J. Hogan and Mrs. Mark H. Frank.

Mrs. Grant Watt is chairman of the house and stage committee. Business will be Mrs. Robert E. Gibson, chairman, Mrs. Henry E. Edwards and Mrs. Chester B. McCormick. Mrs. Herbert H. Gardner is handling the program. Mrs. Robert L. Tate, chairman of the usher, will be assisted by members of the inner music clubs.

**Brilliant Beauty**

**ENAMELOID**

Regularly \$2.67 Qt.

**Now Only \$1.91 qt.**

No Limit

**HUSTON HARDWARE CO.**

Birmingham's Oldest Hardware Store

205 N. Woodward MI 4-7330

Hours 8 to 5:30, Friday 8 A.M. to 9 P.M.

## Planning A Kitchen To Aid The Homemaker

ALICE WESSELS BURLINGAME

Intelligent Kitchen Planning has been one of the lectures at the Birmingham Community House as presented by the Michigan Heart Association. There has been a series of lectures for the person who keeps home with a physical handicap.

The last class meeting, open to the public will be Monday, March 18, from 10 a.m. to noon at the Community House. The series has been sponsored jointly by Alpha Omicron Pi and the County Extension Service.

**THE KITCHEN** is an important center for the homemaker and she should plan on the location of the sink having priority over all other equipment. It has been shown by research that when the sink is between the stove and refrigerator she can prepare the meal in nearly half the time and with half the number of steps necessary in comparison with other plans. You use a sink and stove more than the sink and refrigerator combination in meal preparation.

**HERE** are important facts to consider in the planning of kitchen shelves and their contents. When you reach 50" you use two times as much energy as when you reach 48"; when you reach 72" you use four times as much energy as when you reach 60"; when you reach 84" you use six times as much energy as when you reach 60".

**HERE** are some ideas given by Mrs. P. S. Your reporter has had the Michigan Heart Association in their kitchen lecture for all to see.

study for home management for the conservation of energy. Lists for pans as well as condiments should be located in the stove area.

Serving dishes from a given set should be separated from the plates, etc., and located for greater efficiency near the stove. Use the motto: "Store things where you use them first."

Plan meals with few dishes and prepare food for more than one meal when preparing specific items. Stack like dishes alike, therefore place plates, saucers, etc., only on a given pile.

**STORE** lids vertically in dividers, like a file. It is easy to see them and remove them for an assignment.

If your lower shelves have their base constructed as drawers it is easy with a finger tip touch to bring out the drawer and secure an item from the back of the cupboard.

Store your strainers at the sink where they are always used. Your double boiler should also be located at the sink.

Tilt out bins with measuring in them are best for all grid materials, so you eliminate the strength needed to remove the bin of cans.

**IT'S "TRADE-IN TIME" AT MILKS WESTINGHOUSE TELEVISION** with GIANT 24-inch\* Picture is here!

**MILKS WESTINGHOUSE TELEVISION**

with GIANT 24-inch\* Picture is here!

**IMAGINE! \$189<sup>95</sup>**

(Inc. Fed. Tax and handling)

**THE MONROE** New Sculptured Styling... New Precision Picture... Summer Picture Tube... Eye-Comfort Filter Glass... Tip-Top Front-Tuning... Mahogany Finish.

Get biggest allowance on your old, small screen set now!

**WATCH WESTINGHOUSE** WHERE BIG THINGS ARE HAPPENING FOR YOU!

**MILKS APPLIANCES**

Serving Birmingham for over 25 Years

1493 S. Woodward MI 6-1300 (near 11-Mile)

**OPEN EVENINGS**

**Junior Wives Meet**

"A Balance Sheet of Human Relations" was the subject of a talk by Mrs. Bessie T. Whitby before members of the Engineering Society of Detroit Junior Wives group last night. Committee for the evening included Mrs. Fred Bauer, Mrs. Henry Fedoruk and Mrs. Burkhard Schneider.

**ARE YOU Modernizing?**

CALL OR COME TO SEE OUR "HOUSE DOCTOR"

PHONE: Week Days MI 4-5300 — WE 3-4830  
SUNDAYS CALL WE 3-4830

Our "HOUSE DOCTOR" would be happy to have you stop in to see his beautiful DISPLAY ROOMS at 1100 WYOMING CORNER of LAMON.

"HOUSE DOCTOR" OFFICE HOURS:  
Week Days 9-5 — Sundays 11-1  
Evenings by Appointment

**MATOGANG PANELING**

1/8 x 8 1/2 — 1" \$5.49

1 x 12 SHELVING 16c Lin. Ft.

2 x 4 - 8 STUDS Clean and Straight 49c Ea.

Sliding Door MEDICINE CABINETS \$19.99 Ea.

**INSULATION**

STD. RAUSAM \$6.30  
WOOL 9c/ft.  
IMB. FIBEX \$1.60 Roll

Saloon-type LOUVER DOORS

2/6 x 4/0 . . . per pr. \$14.76  
2/8 x 4/0 . . . per pr. \$14.82  
3/0 x 4/0 . . . per pr. \$15.30

**Restrict LUMBER COMPANY**

FRIEND OF THE FAMILY SINCE 1844

Open Mon. through Thurs. 8 a.m.-5 p.m.  
Open 8-6 on Fridays—Closed All Day Saturday

Call MI 4-5300 For Fast Delivery

Budget Terms and FHA TERMS

E. MAPLE 425 S. ETON  
ADAMS RD. ETON RD. RAILROAD STATION  
RESTRICK LUMBER CO.

**YOU GET MORE WHEN YOU GO Golden Rocket**

**OLDSMOBILE**

**CHECK THESE BIG-CAR EXTRA-VALUE FEATURES**

...YOU GET THEM ALL AT NO EXTRA COST!

Rocket T-400 Engine • 8.30 x 14 Tires • Custom Trim • Oil Filter Turn Signals • Four-Operated Parking Brake • Four-Barrel Carburetor!

Bigger pleasure is a standard feature with Oldsmobile... even on the lowest-priced Rocket. For proof, take a good look at the fine details of the Golden Rocket fit. We're talking about the extra features that add so much to the value of your car, yet don't add an extra penny to the price of your Olds.

For example, you don't pay extra for the big-car performance of Oldsmobile's Rocket Engine.\* The pacing action of its high-compression power gives you economy when you want it, power when you need it.

Compare Oldsmobile's extra-value features with any car at any price! You'll soon find out that you get more when you go Golden Rocket Olds. And this Rocket fits your pocket. Be our guest... take a Rocket Test, soon for that matter!

Compare Oldsmobile's extra-value features with any car at any price! You'll soon find out that you get more when you go Golden Rocket Olds. And this Rocket fits your pocket. Be our guest... take a Rocket Test, soon for that matter!

\*277 h.p. Rocket T-400 Engine standard on all models. J2 Rocket Engine, with 300 h.p., and special Rocket Engine, with up to 312 h.p., optional at extra cost.

**ALL THIS AND J2**

Be our guest for a J2 test Oldsmobile's sensational new engineering advance presents two-stage engine control through progressive carburetion. STAGE ONE, for smoother operation and better economy. STAGE TWO, for a quick surge of extra power when the situation demands it.

*It's like two engines in one!*