

BIRMINGHAM YMCA

Further details on these items may be obtained by contacting the 'Y'.

There are plenty of tickets available from the Birmingham YMCA's annual family day, Saturday, June 15, at Jefferson Beach, 9 1/2 Mile and Jefferson.

This features Mickey Shorr, star of stage, radio and television. Free dancing, stage show, and rides from noon to 5 p.m. for youngsters and adults.

Tickets of admission may be obtained for \$1 at the B'ham 'Y'.



RUSSELL A. SWANEY
Foundation Post For R. A. Swaney

The president of the YMCA's World Alliance, Charles Dunbar Sherman of Monrovia, Liberia, will be the distinguished speaker at a fellowship dinner tomorrow, at 7 p.m.

Sponsored by the Metropolitan Detroit YMCA world service committee the dinner at First Congregational church, Detroit, will be preceded by a reception at 6:30 p.m.

The Indian Guides are having a swim at the Pontiac YMCA pool Saturday, June 15, 1:15 to 2:15 p.m. All little braves must be accompanied by a big brave. Chiefs are to call the 'Y' office to make reservations.

George Ewing, youth director, announced the leaders for the Little Giant program for boys and girls six and seven years of age. Barbara Ritter, freshman in the liberal arts college at Albion, is the director. She was former counselor and handicraft instructor in 1955. Assisting Miss Ritter is Nancy Johnson, freshman in the college of education at the University of Michigan. Marie Borchert and Mary Bleakley will act as boating instructors on Wednesdays when the Little Giants visit Kensington park.

Russell A. Swaney, 118 Villa road, vice-president of the Federal Reserve Bank of Chicago, has been named chairman of the commerce, trades and professions unit of the annual fund-raising drive of United Foundation.

Swaney will head the unit which last year raised \$4,612.17—28.7 per cent of the \$16,225,000 contributed to the support of 150 health and community services in the 1956 torch drive, and on which he served as co-chairman.

He has been vice-president and manager of the Detroit Federal Reserve bank since 1953.

POTTER
Moving & Storage Co.
2253 Cole
Phone MI 4-4612

Local specialist in local moving!

No. 1 on U.S. Highways—No. 1 in Service—No. 1 in Your Community

Music Circle
On the grounds of Botsford Inn

"Broadway Musicals at 1/2 Broadway Prices!"

June 17—Plain and Fancy
June 25—Pajama Game
July 2—Com-Com
July 9—New Moon
July 16—Peter Pan
July 23—Anything Goes
July 30—Boy Friend
Aug. 6—Brigadoon
Aug. 13—Naughty Marietta
Aug. 20—Damn Yankees
Aug. 27—South Pacific

Has Foster Parent

Valentina Stanulis has been financially "adopted" by Mrs. R. Smith Wild, 783 Pilgrim, Birmingham, through Foster Parents Plan, Inc., 352 Fourth Avenue, New York City. Her foster parent will contribute \$15 a month toward the 7-year-old Lithuanian girl's support for at least one year. Both the child's parents are very ill and unable to work. The family lives on unemployment assistance of just over \$1 a day.

Smoker Scheduled By Phi Psi Alums

A smoker is on the schedule for members of the Detroit Alumni association of Phi Kappa Psi, who will gather Friday evening at the home of Hyatt Eby, 886 W. Lincoln, for the event. Other plans include a golf party June 22 at Rochester golf and country club, where Jack Fleck, former National Open champion, will be the host. Reservations can be made by phoning Hyatt Eby, of the above address.

Season Tickets Now on Sale!

Season Ticket, Books (10 Shows) TAX INCLUDED

Tues., Wed., Thurs., or Sun.
Inner Circle \$31.50
Mid-Circle \$26.50
Fridays and Saturdays
Inner Circle \$35.00
Mid-Circle \$29.50

Call Greenleaf 4-3300

BEWARE!

On June 10th, 1957, your Birmingham School District wants you to vote your approval of a bond issue in the fabulous amount of \$4,800,000.00.

Their objective is to construct:

1. A garage building for \$ 50,000.00
2. Modernize Baldwin elementary school bldg. 225,000.00
3. Construct one elementary school building, and one Junior-Senior high school. Both buildings to provide a total of 74 class rooms, at a total cost of \$6,525,000.00 (Or an average of \$88,176.00 cost per class room)

We cannot afford this extravagant type of building and spending.

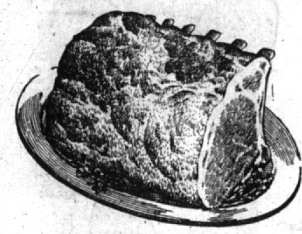
We urge you to REJECT and VOTE NO June 10th, 1957 on Bond Issue \$4,800,000.00

Caution: If this bond issue should pass, then every property owner in the district will be assessed and pay his share. The average household's share will be \$-807.28—plus a high rate of interest.

The Unhappy Taxpayers

Bertha Anderson—1509 Yorkshire, Birmingham
Walter Kadell, 836 Lakeview, Birmingham
W. P. Kennedy, 1058 Floyd St., Birmingham
A. J. Brennan, 1525 Yorkshire, Birmingham
T. M. Roberts, 1111 Yosemite, Birmingham

COME SEE A&P'S STORE FULL OF VALUES...YOU'LL GET...
A POCKET FULL of Savings!



"SUPER-RIGHT"—CUT FROM TENDER, YOUNG PORKERS

Pork Loins
RIB PORTION LB. **35c**



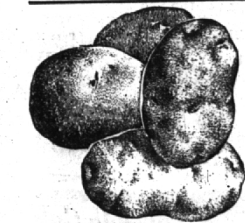
Pork Loin Roast "SUPER-RIGHT" LOIN PORTION LB. **45c**

DELIGHTFUL POULTRY TREAT
Cornish Hens 16-OZ. PKG. **69c**

"SUPER-RIGHT" FANCY QUALITY
Sliced Bacon LB. PKG. **59c**

Long Island Ducks 4 TO 6 POUNDS LB. **33c**
Large Bologna "SUPER-RIGHT" CENTER SLICES LB. **43c**
Liver Sausage FRESH OR SMOKED "SUPER-RIGHT" LB. **39c**
Allgood Bacon LB. PKG. **49c**

"SUPER-RIGHT" FULLY COOKED
Semi-Boneless Ham LB. **69c**



CALIFORNIA GROWN, LONG WHITE
POTATOES 10 LB. BAG **49c**

LAKE ERIE, FRESH
Perch Fillets LB. ONLY **43c**

Fresh Sweet Corn 6 EARS **39c**
Red Ripe Tomatoes 14-OZ. CTN. **29c**
Ripe Watermelons 24 TO 27 LBS. AVERAGE EA. **1.29**
Pascal Celery CRISP AND FRESH LARGE STALK **29c**

LAKE ERIE FRESH
Cleaned Smelt LB. **25c**
LAKE ERIE FRESH DRESSED
White Bass LB. **29c**
CAP'N JOHN'S
Oyster Stew 2 10-OZ. CANS **59c**

SAVE 10c! A&P FANCY, WHITE MEAT
Tuna Fish 3 7-OZ. CANS **79c**

SAVE 10c! A&P—OUR FINEST QUALITY
Grape Juice 4 24-OZ. BTL. **89c**

SAVE 17c! LADY BETTY
Prune Juice 4 32-OZ. BTL. **99c**

FOR SALADS OR COOKING
dexola Oil GAL. BTL. **1.89** QT. BTL. **59c**

Chili Con Carne "SUPER-RIGHT" 2 16-OZ. CANS **39c**
Tomato Soup ANN PAGE 3 10 1/2-OZ. CANS **32c**
Salad Dressing ANN PAGE 16-OZ. JAR **29c**
Fruit Cocktail SULTANA 3 29-OZ. CANS **1.00**
Grapefruit Juice A&P 4 46-OZ. CANS **99c**
Iona Apricots UNPEELED HALVES 3 29-OZ. CANS **79c**

Brownie Mix PY-O-MY 10 1/2-OZ. PKG. **29c**
Tomato Ketchup ANN PAGE 3 14-OZ. BTL. **49c**
Fancy Tuna CHICKEN-OF-THE-SEA 7-OZ. CAN **39c**
A&P Corn WHOLE KERNEL, GOLDEN 4 16-OZ. CANS **47c**
Iona Peas 2 15 1/2-OZ. CANS **27c**
Chicken-Noodle Dinner RANDALL 15 1/2-OZ. CANS **35c**
Wesson Oil PT. **39c** QT. **77c**
Armour's Treet 12-OZ. CAN **45c**

Corned Beef Hash ARMOUR'S 16-OZ. CAN **35c**
Potted Meat ARMOUR'S 2 4-OZ. CANS **21c**
Vienna Sausage ARMOUR'S 2 PKG. OF 49 **39c**
Paper Plates SUPERIOR BRAND 49 **49c**
Paper Napkins BIG PAK 50 OF 200 **29c**
Charcoal NORWOOD 4 LB. BAG **29c**

JANE PARKER FRESH BAKED HAMBURGER OR
Hot Dog Rolls PKG. OF 12 **29c**
Blackberry Pie 8-INCH SIZE **49c**
Danish Pastry Ring DELICIOUS COFFEE CAKE ONLY **29c**
Spanish Bar Cake MEDIUM SPICED EA. **33c**
White Bread JANE PARKER SLICED FRESH DATED DAILY 2 1 1/2-LB. LOAVES **37c**

NEW LOW PRICE...
Dial Soap
REGULAR SIZE 3 CAKES **35c** BATH SIZE 2 CAKES **35c**

ALL A&P SUPER MARKETS OPEN THURSDAY AND FRIDAY 'TIL 9 P.M. CLOSED ON SUNDAYS

GEBER'S STRAINED LARGE SIZE
Baby Foods 6 1/4-OZ. JARS **59c**
Ivory Soap CAKE **15c**

ALL prices in this ad effective thru Sat., June 8th AMERICA'S FOREMOST FOOD RETAILER...SINCE 1929
A&P Super Markets
THE GREAT ATLANTIC & PACIFIC TEA COMPANY

SAVE ON A&P'S PROCESSED AMERICAN OR PIMENTO CHEESE FOODS
Ched-O-Bit 2 LB. LOAF **69c**
MARVEL
Ice Cream 1 1/2-GAL. CTN. **69c**
Mel-O-Bit Slices PROCESSED CHEESE FOUR VARIETIES 8-OZ. PKG. **29c**
Sliced Swiss A&P BRAND, RINDLESS 8-OZ. PKG. **37c**
Silverbrook Butter 1-LB. PRINT **65c**

MEDIUM SIZE PERSONAL SIZE
Ivory Soap 3 CAKES **28c**
Ivory Soap 4 CAKES **25c**