

General Electric Kitchens

A NEW LINE of General Electric Kitchen cabinets and built-in appliances is now available for the first time to the Birmingham shopping public. Kitchens are located in Hawthorne Electrical company, 162 N. Woodward, Birmingham. Carus and James Schmidt, and their mother, Mrs. Marian Schmidt, have operated the store at that location since 1949, handling a complete line of electrical appliances and televisions.

Sales Top \$72 Million, Market Rated High

**NEW YORK**—Birmingham is rated high as a market on the basis of its business activity in the past year. Its strength was shown in high employment and income and in large-scale buying in the local retail stores.

The findings are contained in Sales Management's new, copy-righted survey of buying power, which gives comparative performance figures for every section of the country.

**LARGE-SCALE** spending by residents of Birmingham was a bright spot in the business picture. Purchases in the local retail stores added up to a noteworthy \$72,665,000.

For most retail lines it was a prosperous year. Non-durable goods turned in the best performance, a raise of six percent. Durables, however, fell two percent below the record set in 1955. The slump in new car sales had a lot to do with it.

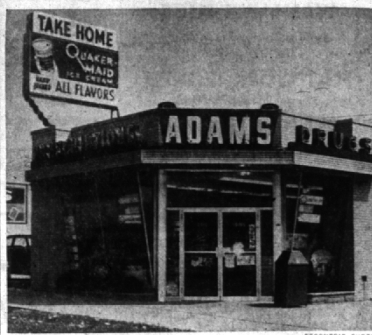
The ability to spend more, in Birmingham, stemmed from better earnings. The survey shows that the total disposable income locally, after taxes, amounted to \$74,852,000, which was more than the \$72,147,000 in 1955.

**ARITHMETICALLY**, dividing the income by the number of families, it came to a net of \$9,980 per family.

This was more than was available to most families in the United States after taxes. They averaged

\$5,736, and, in the State of Michigan, \$6,245.

The relationship between the



New Scroll Sign

A NEW SIGN has been installed over the entrance of Adams Pharmacy at 1955 Woodward just north of 14 Mile. Store owner Walter E. Adams and his wife Martha share duties behind the drugs counter and soda fountain.

amount of business being done in any one community and its full capacity is shown in the study through a "buying power index." This is a weighted figure which takes into account such factors as population, disposable income and buying volume.

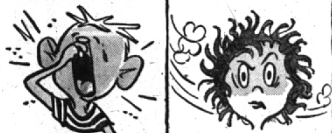
**IT RATES** Birmingham as able to account for 3274 percent of the nation's retail business. Since a larger amount was done last year, 3877 percent, it concludes that the city is the buying hub for the surrounding area.

In almost every direction, growth seems to be the watchword of the day. With populations expanding rapidly, with real incomes rising and with our national production of goods increasing, people now can buy more than they could a few years back.

The Story Of The Man Who Drove An OVEN



There was this man who drove an oven of a car. When the sun shone he and his family broiled. When it rained, they steamed.



Furthermore, the kids sneezed all day from the pollen. They got grimy dirty from dust, too.

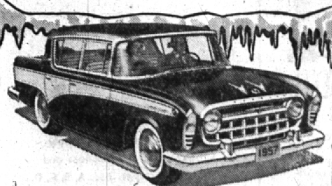
The man's wife was usually furious. "Wind-blown hair," she said. "I look like a witch!"



The man was unhappy—until he found that he could get lowest priced air conditioning in a brand-new Rambler.

Now the family's happy. With Rambler's famous economy, the man saves plenty on gasoline, too. And is HE happy!

Rambler LOWEST-PRICED CAR AIR-CONDITIONING



Nothing, absolutely nothing, adds so much to health, comfort—and increased resale value—as low-cost air conditioning in a new Rambler! Get our red hot deal on a cool, cool Rambler.

AMERICAN MOTORS MEANS MORE FOR AMERICANS See Disneyland—Great TV for all the family over ABC Network. **BIRMINGHAM NASH, INC.** 666 S. Woodward—Birmingham MI 6-2900

APTITUDE TESTS

enable you to learn the kind of work you can best handle. In the hands of studies YOU should follow. (For 50c per student.) Vocational Counseling Institute Daniel L. Beck, Director 958 Macabee Bldg., Temple 1-1551 Woodward near Warren 11 Years Serving Detroit.

Holiday Pools

—for distinctive living— reinforced concrete TW 1-1100 Evenings and Sunday—MI 7-0717

SPECIAL ELECTION

TO THE QUALIFIED ELECTORS: NOTICE IS HEREBY GIVEN, That a Special Election will be held in the Township of Bloomfield, (Precinct No. 2) County of Oakland, State of Michigan AT BLOOMFIELD VILLAGE FIRE HALL, ON BRADWAY BLVD., JUST EAST OF LAHSER RD. Within said Township on

MONDAY, JUNE 24, 1957

TO VOTE ON THE FOLLOWING VILLAGE INCORPORATION PROPOSAL:

"Shall the following described territory in Bloomfield Township, Oakland County, Michigan, be incorporated as a Village under the provisions of Act 278 of the Public Acts of 1929, as amended:

WHEREAS, heretofore on March 1, 1957, pursuant to Act 278 of the Public Acts of 1929, as amended, a petition was filed by certain resident electors and freeholders of the area, praying for the incorporation of the territory described as: The following Subdivisions located in the Township of Bloomfield, Oakland County, Michigan: Westchester Village, the plat of which is recorded with the Oakland County Register of Deeds at Liber 75, pages 20-21.

Westchester Village Number 1, the plat of which is recorded with the Oakland County Register of Deeds at Liber 82, pages 6, 7 and 8. The Boundaries are Bloomfield Village Subdivision Number 5, the Township Well Site, Westchester Village Subdivision Number 2 and Westchester Village Subdivision Number 3 on the North; Cranbrook Road on the East; Supervisor's Plat of Berkshire Forest Subdivision and proposed Westchester Village Subdivision Number 4 on the South; and Lahser Road on the West. as a Village, said Village to be known and designated as the "Village of Westchester"; and

That the form and sufficiency of the petition heretofore filed on March 1, 1957, praying for the submission of the question of incorporation of the Village to be known as "Westchester" to consist of the territory described in said petition, complies with the provisions of the Act being Act 278 of the Public Acts of 1929, as amended, and are in all respects regular;

That June 24, 1957, be set as the date for a Special Election on the question of incorporating the Village of Westchester.

AND ALSO TO VOTE FOR THE FOLLOWING: FIVE CHARTER COMMISSIONERS

Notice Relative to Opening and Closing of the Polls ELECTION LAW, ACT 116, P. A. 1954

SECTION 720. On the day of any election the polls shall be opened at 7 o'clock in the forenoon, and shall be continuously open until 8 o'clock in the afternoon and no longer. Every qualified elector present and in line at the polls at the hour prescribed for the closing thereof shall be allowed to vote.

THE POLLS of said election will be open at 7 o'clock a.m. and will remain open until 8 o'clock p.m. of said day of election. ROBERT H. DUDLEY, Township Clerk

You will find many bargains in The Eccentric Classified Columns.

Free Trial Offer! If you haven't already tried it, this is your opportunity! At no cost or obligation, we'll spray a part of your lawn. You'll be convinced within 10 days.

FERTILENE

America's Foremost Liquid Fertilizer 15-10-5 Nitrogen - Phosphorus - Potash plus Trace Elements Save - Odorless - Inexpensive

Distributed in this area by Berkley Oil Co. Call Lincoln 3-1100 Today!

A PERMANENT HOME FOR YOUR FAMILY is guaranteed when you arrange for Life Insurance to repay the mortgage in full if you should die. Talk it over with the Man from Manufacturers

**THE MANUFACTURERS LIFE INSURANCE COMPANY**

BRANCH OFFICES 1850 Penobscot Bldg., Detroit 26 W. M. Milligan, C.L.U., Branch Mgr. Phone: WO 1-3191 2842 W. Grand Blvd., Detroit 2 Richard W. Schmid, C.L.U., Branch Mgr. Phone: TR 5-3230 Birmingham Representative: David K. Falvey, C.L.U.

Folders - - - ? YES . . . IN BLACK AND WHITE OR 4 COLOR PROCESS

Three Detroit Salesmen . . . TR 5-2629 . . . Plant MI 6-2000

The AVERILL PRESS INC. of Birmingham A COMPLETE PRINTING SERVICE—FROM TYPESETTING TO MAILING

FORMERLY THE BIRMINGHAM ECCENTRIC PRINTING DEPARTMENT

BEAUTIFUL FORMICA DINETTES AVAILABLE IN BLACK WROUGHT IRON AND CHROME MADE TO ORDER

ANY Shape Size Style \$59.95 Lifetime Guarantee On All Chrome 26 Styles — 26 Colors — All Stores

Beautiful FORMICA BUFFETS Made To Order

**METALMASTERS MFG. CO.** 4600 N. WOODWARD, Near 14-Mile Road Liberty 9-3011

PRE-SEASON SALE AIR CONDITIONERS, DEHUMIDIFIERS

Westinghouse DEHUMIDIFIER 5-Year Warranty REG. \$149.95 NOW \$99.95

GENERAL ELECTRIC THIN LINE AIR CONDITIONER 1/2-TON, 110 VOLTAGE. NOW ONLY	\$249.95	GIBSON AIR CONDITIONER, Deluxe, Fully Automatic, 1 TON, 220 Voltage, Regular \$369.95. NOW	\$189.95
UNIVERSAL AIR CONDITIONERS Deluxe, Fully Automatic, 1/2-TON, 110 Voltage Regular	\$179.95	HOT POINT, Deluxe, Full Automatic, 1/2-TON, 110 Voltage, Regular \$329.95 NOW	\$199.95
1-TON, 220 Voltage, Regular \$369.95 NOW	\$199.95	FRIGIDAIRE Deluxe, Fully Automatic, 1/2-TON, 110 Voltage, Regular \$329.95 NOW	\$199.95
2-TON, 220 Voltage, Regular \$469.95 NOW	\$269.95		

Reversible Window FANS REG. \$39.95 NOW \$19.95

**MILKS APPLIANCES** 1493 S. WOODWARD BIRMINGHAM MI 6-1300 OPEN EVENINGS