



Honolulu Bound

AMONG THE prominent passengers leaving for Honolulu aboard Matson lines luxury liner "SS Lurline" from Los Angeles harbor Friday were Mr. and Mrs. Jesse W. Eakins and children, Pat and Sandy, 576 Half Moon road, Bloomfield township.

Past Matrons Club Schedules Meetings

The next regular meeting of the Birmingham Past Matrons club will be at the home of Mrs. Rudolph York, 1739 Croft, Birmingham, on Tuesday, July 26, with a dessert luncheon at 1 p.m. Another meeting will be scheduled for August 27 at Walpole Island at 12:30 p.m. for a pot-luck luncheon with Mrs. Perry Vaughan as hostess. Those planning to attend should contact Mrs. Harwin Hillman of Lone Pine road, or Mrs. York.

SWIMMING POOLS

Built by experienced pool builders. Gunite construction, Hygeia filter, pump, underwater lights, diving board, and ladders.

CALL LI 4-2002 or Write

WONDERLAND POOLS

1978 Cambridge

Berkley

Birmingham Youth Wins State Award For Model Car

Nineteen-year old David Koto, 1231 Foxchase road, Birmingham, and 15-year old Gunter Stein, of Grand Rapids, are a little closer to winning one of the university scholarships offered each year in

the Fischer Body Craftsman's guild model car competition. It was announced today that both boys won first place in the state and for the region of Michigan and Ohio in their respective age divisions in the 1957 competition. Each received \$150 in cash, and scholarships from \$5000 to \$2000 are the next goal. National scholarship winners will be announced July 30. Koto, who attends the Univer-

sity of Michigan, won a \$1000 styling award in last year's competition.

Lawrence E. Smith
Landscape Design and Construction
135 N. WOODWARD
in the Wilson Building
Phone MI 4-2036

Catalogs - - - ?

YES . . . WE PRINT THEM FOR SCORES OF DETROIT FIRMS

Three Detroit Salesmen . . . TR 5-2629 . . . Plant MI 6-2000

The AVERILL PRESS INC. of Birmingham

A COMPLETE PRINTING SERVICE—FROM TYPESETTING TO MAILING

FORMERLY THE BIRMINGHAM ECCENTRIC PRINTING DEPARTMENT

ENROLL NOW!

Courses approved by Michigan State Board of Education and Veterans' Administration. Competent, experienced teachers. Individual instruction. FREE lifetime employment service.

COMPTOMETER CALCULATOR
TYPEWRITING
And Other Courses

HOURS:
Morning 8:00-10:45
Afternoon 11:00-1:30
Evening 6:30-9:00

SPEEDWRITING
The shorthand written with a b.c.'s is now being offered in Evening School. Call for details.

The Business Institute

7 W. Lawrence Street PONTIAC Phone FE 2-3551
Call in Person, Phone or Return This Ad for Information

NAME ADDRESS

Want Ads cannot be accepted after 5 p.m. each Tuesday

"THRIFTY" MEAT SALE!

ROUND, RIB OR SIRLOIN Steaks

Lean, "Thrifty" meat. Fine Kroger's weel-long special value, **79¢**

- Chuck Roast "Thrifty" blade cut Lb. **37¢**
- Rib Roast "Thrifty" meat, standing 5" cut Lb. **53¢**
- Cornish Game Hens Stock your freezer, case of 12 \$8.99 16-Oz. Avg. Each **79¢**
- Smoked Picnics Tender 4-6 pound average Lb. **39¢**
- Flav-O-Rich Steaks Shredded chopped fresh frozen 1-Lb. 11-Oz. Pk. **89¢**

BANQUET FROZEN BEEF, CHICKEN OR TURKEY

Pot Pies 5 For \$1.00

- Ice Cream 14-Gal. Carton **69¢**
Country Club by Miller Gold Seal Dairy
- Margarine 1-Lb. Cartons **79¢**
Homestead everyday low price 4

DELICIOUS FRIED WITH EGGS

- Spam 12-Oz. Can **39¢****
- Spotlight Coffee 1-Lb. Bag **79¢**
New low, low price
- French Coffee 1-Lb. Bag **89¢**
New low, low price

SAME FINE QUALITY BOTTLE AFTER BOTTLE—DEL MONTE

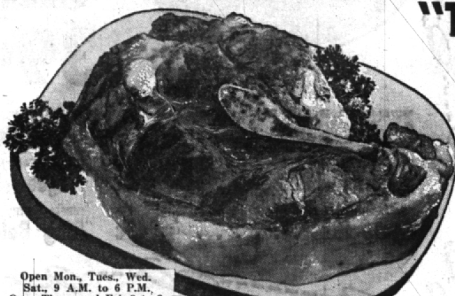
- Catsup 14-Oz. Btl. **29¢****
- Pineapple CRUSHED 7-Oz. Can **10¢**
Royalty brand golden Hawaiian
- Pineapple Juice 12-Oz. Can **10¢**
Dole brand Everyday low price

BREAST-O'-CHICKEN CHUNK STYLE

- Tuna 3 6½-Oz. Cans **79¢****
- Pound Cake Each **19¢**
Fresh Kroger baked. Budget value
- White Bread 2 20-Oz. Loaves **37¢**
Fresh Kroger sliced

KROGER SELECT—GOLDEN-RIPE

- Bananas 2 Lb. **29¢****
- Pascal Celery 24 SIZE Large Stalk **29¢**
California's finest, fresh crisp
- Fresh Lemons 6 For **29¢**
Large 150 size, juice laden



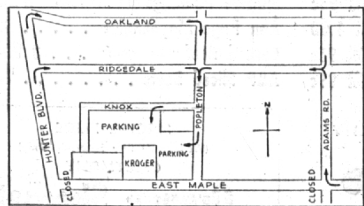
Open Mon., Tues., Wed., Sat., 9 A.M. to 6 P.M.
Open Thurs. and Fri. 9 to 9



EAST MAPLE IS CLOSED!

but . . .

KROGER IS OPEN!



It's just as convenient as ever to shop at Kroger in Birmingham. Just follow the arrows on the map. They'll lead you into that convenient Kroger Parking lot. Remember, while East Maple is closed KROGER WILL BE OPEN. Hours: Mon., Tues., Wed., Sat., 9 A.M. to 6 P.M. Open Thursday and Friday 9 to 9.



Get Top Value Stamps Plus Low, Low, Low Prices at Kroger!

We reserve the right to limit quantities. Prices effective through Sunday, July 21, 1957.



GET TOP VALUE STAMPS
PLUS LOW-LOW PRICES
AT KROGER