

ANNOUNCING...

BODINE'S SUMMER STORE HOURS

July and August
Mon. thru Sat.
9 A.M. to 6 P.M.

SUNDAYS
10 A.M. to 3 P.M.

BODINE'S

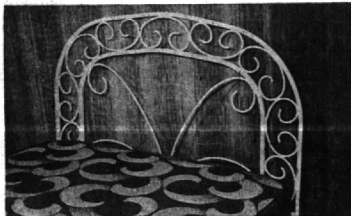
172 N. Woodward

MI 4-1177

CONTEMPORARY HEADBOARDS

made from

- BRASS
- WROUGHT IRON
- FINE WOOD
- CANE



Custom headboards, covered
in your own fabric to
match bedspread or draperies

COMPLETE LINE OF BEDDING

R.C. CARPENTER Lumber Shop

28879 Greenfield (south of 12 Mile)

Open Thurs. & Fri. Till 9 P.M.

LI 4-9133

Florsheim

discontinued styles for men

REDUCED

\$15⁸⁰ & \$17⁸⁰

regularly \$18⁹⁵ to \$20⁹⁵

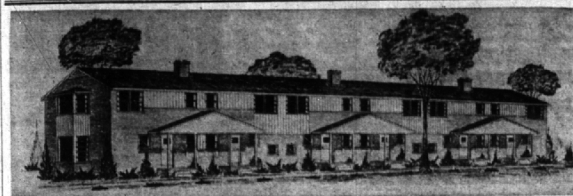
Don't delay—save now on famous Florsheim Shoes
from our regular stock! Discontinued styles in
a good selection of sizes.

WILLIAMS BOOT SHOP

115 WEST MAPLE

MI 4-7344

BUSINESS BRIEFS



Midtown Terrace Ready for Use

WITHIN WALKING distance of shopping and transportation, Birmingham's newest terrace building, the Midtown Terrace, at 645 Purdy, Birmingham, is ready for immediate occupancy. Six attractively decorated five-room units, each

a complete home with its own recreation room in the basement, contain a living, dining, kitchen, two bedrooms, powder room and bath. Ample black-top parking space is available.

Food, Autos Get 53c of Retail \$ Spent in B'ham

Special To The Eccentric

NEW YORK, July 5—In Birmingham, in the past year, food store operators and auto dealers succeeded jointly in snaring a major part of the money spent in local retail establishments.

The two piecemeals accounted for 53 cents out of every dollar spent at retail. Elsewhere in the United States, the combination attracted only 43 cents and, in the East North Central States, also 43 cents.

The findings are by the Standard Rate and Data Service. They are contained in a comparative survey of the buying habits of consumers in every section of the country.

THE BREAKDOWN shows that housewives in Birmingham spent freely for food, using 22 per cent of their available money for it. They bought better grades and bigger quantities than before.

As a result, the stores selling meat, fish, baked goods, vegetables and the like had a good year, with receipts totaling \$19,063,000. Their volume in 1955 was \$18,634,000.

The amount is only for food bought for home consumption and is exclusive of money spent in eating and drinking places.

BIG SPENDING was in evidence, also, in the automotive field. In purchases of new and used cars, boats and farm machinery. Local outlays in this direction totaled \$29,946,000 in the year. They represented 31 per cent of all retail buying.

Most other outlets for consumer goods profited, also, as consumers, bolstered by larger incomes and in a buying mood, spent more money than ever before.

Local stores selling general merchandise had sales totaling \$4,085,000, equal to nearly 6 cents of the retail dollar.

Home furnishings stores accounted for \$5,031,000; another 6 cents of the dollar.

APPAREL SHOPS did \$11,807,000 in the year, amounting to 14 cents.

The consumer, and what he feels and will do, have become the most important key to continued economic well-being. His buying whims can mean the difference between a good year and a bad one.

Today he is confident. He feels his job and his income are secure. As a result, he is going right ahead with his spending, which is keeping the wheels of industry humming at a prosperous clip.

The width of United States ships is determined by the Panama Canal, and the height by the Brooklyn Bridge.

"Veto" comes from the Latin word meaning "I forbid."

You Needn't Have
RUG CLEANING
HEADACHES

Your Professional
Rug Cleaner
Knows What to Do

Just Call
CRESCENT
CARPET CLEANING
COMPANY

123 Catalpa Drive
Royal Oak, Mich.
LI 7-2922

Member of
National Institute of Rug Cleaning

Modern - Flexible - Individual
Hospital, Surgical, Medical
And Life Insurance Plans
KARL M. FREMUTH
608 North Woodward Avenue
Birmingham, Mich. Midwest 6-9360



Representing
AMERICAN HOSPITAL - MEDICAL BENEFIT
A MUTUAL NOT-FOR-PROFIT ASSOCIATION
COMMUNITY MUTUAL LIFE INSURANCE CO.

EXQUISITE PATTERNS by STANGL



Country Garden

This Stangl pattern has gathered together a galaxy of flowers that brings your garden into your home. Beautiful new shapes will make your table most attractive. Colors permanently protected against fading or washing off. 16-piece starter set and open stock.

ALSO —
Carry the following
STANGL patterns

- Fruit
- Thistle
- Carnival
- Blueberry
- Magnolia
- Provincial
- Wild Rose
- Golden Harvest

16 Piece Starter Set \$14.95
12 1/2" Chop Plate \$5.50 8" Plate \$1.50
Sugar and Cover \$2.50 Creamer \$2.00
8" Round Vegetable \$2.75

PONTIAC POTTERY

2099 S. Telegraph FE 2-8642
2 Miles North of Devon Gables
on Telegraph 1/2 Mile North of Sq. Lake Rd.
Open Daily and Sunday 10-8

Full-Cut For Comfort ...

KRESGE'S

Smooth Combed Cotton,
Nylon Reinforced
T-SHIRTS

men's sizes

89¢

boy's sizes

69¢

Stacks and stacks of
immaculate white tee
shirts... a generous
summer supply at
Kresge's low price!
In smooth-fitting
cotton, nylon reinforced
at crew neck
... it won't sag! S-M-L

W. MAPLE AT HENRIETTA



TORRENCE
OIL COMPANY
Phone
MI 4-9000
"We Serve the
Suburbs"



The
Welcome Wagon
Hostess

Will Knock on Your Door
with Gifts & Greetings
from Friendly Business
Neighbors and Young
Civic and Social
Welfare Leaders
On the occasion of
Change of residence
Arrivals of Newcomers
to Birmingham

MRS. H. WALES PRICE
Midwest 4-0516
(No cost or obligation)



for REPLACEMENT
or NEW INSTALLATION
Complete Selection
of Nationally Advertised Brands

EXPERT WORKMANSHIP
FREE ESTIMATES

T. E. HOGAN CO.

2865 Woodward Ave.
LI 4-3300 3 Bks. S. of 12 Mile
OPEN FRI.—9 P.M.



LAST CALL for CHET SAMPSON'S Western Tour

TOTAL PRICE: \$385.00

JULY 27 - AUG. 31

In two sections

One for girls. One for boys.

(This will be the last Western tour ever offered for boys.)

This tour covers 14 states and nine national parks: Yosemite, Yellowstone, Tetons, Bryce, Zion, Grand Canyon, Wind Cave, Mesa Verde, and Rocky Mountain National Parks; Hollywood, San Francisco, Salt Lake City and Lake, Las Vegas, Hoover Dam, Black Hills, Mt. Rushmore, Badlands, Petrified Forest, Painted Desert, Laguna Beach, Colorado Springs, and many more.

Applications and information available at:

CHET SAMPSON'S TRAVEL SERVICE, INC.

100 Kercheval Ave. Phone: TU 5-7510

Magnavox

high-fidelity television • radio-phonographs

McCallum and Dean

409-411 E. Maple

Midwest 4-5230

Report of Condition of MANUFACTURERS NATIONAL BANK

DETROIT, MICHIGAN

AT THE CLOSE OF BUSINESS JUNE 30, 1957



RESOURCES

Cash and Due from Banks.....	\$154,276,709.92	\$370,567,619.40
United States Government Securities.....	216,290,909.48	59,897,698.87
Public Housing Authority Bonds and Notes.....		17,419,444.59
State and Municipal Securities.....		12,205,961.10
Other Securities.....		
Loans and Discounts.....	241,561,506.69	340,698,369.53
Real Estate Mortgages—E.H.A.....	1,051,754.10	5,448,603.36
Veteran.....	16,993,344.15	272,106.52
All Other.....	31,291,764.59	3,992,959.36
Bank Premises and Leasehold Improvements..		
Furniture and Fixtures.....		272,106.52
Accrued Income and Other Resources.....		3,992,959.36
Total.....		\$790,502,756.93

LIABILITIES

Demand Deposits:		
Individuals, Corporations and Banks.....	\$420,726,397.02	
United States Government.....	23,539,043.07	
Other Public Funds.....	26,357,965.53	\$470,623,405.62
Savings Deposits.....		264,231,131.11
Total Deposits.....		734,854,536.73
Accrued Expenses and Other Liabilities.....		12,175,385.06
Capital Funds:		
Common Stock (\$10.00 Par Value).....	10,962,500.00	
Surplus.....	20,037,500.00	
Undivided Profits.....	12,472,855.14	43,472,855.14
Total.....		\$790,502,756.93

MEMORANDUM
Securities pledged to secure public deposits, including deposits of \$10,891,789.12 of the State of Michigan, and for other purposes required by law..... \$72,033,695.38

DIRECTORS

- | | | |
|--|---|--|
| WENDELL W. ANDERSON JR.
Vice President and General Manager
Bundy Trading Company | ARTHUR J. FISHMAN
Executive Vice President
Mervyn G. Gaskin
President, Taylor & Gaskin, Inc. | WILLIAM A. MAYBERRY
President
JAMES W. PARKER
Director
The Detroit Edison Company |
| OSCAR L. BARD
Chairman of the Board
Michigan Trust Company | SHERWIN A. HILL
Hill, Lewis, Andrews,
Graves & Adams | A. GUY ROY
Senior Vice President
Wessex Securities |
| H. GLENN BERRY
President, Ex-Cello Corporation | GEORGE M. HOSLEY JR.
President
Hobby-Carlson Company | WESLEY WOODS
President, Western States
Russell S. Strickland
Vice President and Director
Federal-National-Savings Securities, Inc. |
| WM. REVIE CLARK
Chairman of the Board
Temple Products Corporation | CHARLES A. KANTER
Director, National Steel Corporation | C. WILLIAM SUCHER
President
Specialty Petroleum Corporation |
| E. M. FORD
Chairman of the Board
Ford Motor Credit Corporation | GEORGE W. KENNEDY
Chairman of the Board
Kelp-Hess Company | GLENN E. TURNBULL
President, Woodale
Herbert J. Woodale
President, Woodale Industries, Inc. |
| WILLIAM CLAY FORD
Vice President and Director
Ford Motor Company | HARRY J. LOVIND
President, Park, Davis & Company | |

OFFICES IN DETROIT • DEARBORN • HIGHLAND PARK • BLOOMFIELD • GROSSE POINTE WOODS
MELVINDALE • NORTHVILLE • PLEASANT RIDGE • REDFORD • SOUTHFIELD • VAN DYKE
Member Federal Deposit Insurance Corporation