

Time to Take a Survey of Evergreens

This is the time to survey your property and especially go to each evergreen, examine it, is there any shrub, perennial or annual that is in the way of its growth for this summer.

Your evergreens have priority on space if cut in any criteria. Trim the offending plant material and don't weep too much if it calls for some drastic surgery as soon as there will be new growth to compensate. Then plan on moving the offending shrubs or perennials after the leaves have fallen in the Fall.

BE A MODERN GARDENER and plan to mulch your flower beds at this date in order to cut down your labor of weeding, and a mulch will hold the moisture in near the roots and keep them cool also during the hot days ahead.

Constant cultivation does a great deal of root injury. By using a

mulch you avoid the run-off of heavy rains, they become like a sponge if you use a mulch.

For a mulch material you have peat moss, don't cultivate after mulching - (use Canadian peat and not the native Michigan variety). Other choices are buck wheat hulls, ground corn cobs (fine grade), and the free ground wood cuttings which you can secure from the main Service Yard of Birmingham (in your basket).

Be sure and fertilize before covering with a mulch to assure a midsummer "meal" for your plants when they need it during heavy production time, but primarily fertilize because most mulches deplete Nitrogen which is your foremost element toward plant growth.

AS FOR the depth of the mulch. The optimum depth is two inches but few of us are able to corral a fortune in the material so place it on your flower beds as deep as possible, giving your roses favoritism.

Mrs. D. R. Wessels finds that moth balls in a bag or a chore boy will discourage dog activity around your choice plants and these moth balls will send the runies running.

The other day we saw the most handsome hedge of five leaf acacia in Ann Arbor. This is a shrub which could give you a compact hedge in shade anywhere from three to six feet in height.

Here is something to remember if you grow any kind of a plant near trees you really have to give plenty of fertilizer to counteract the greedy appetite of the trees.

Don't forget to keep "butching" those mums to guarantee bushy specimens filled with blossoms. isn't too late to pot some mums, place in the sun to grow, then in the early Fall you can place them in full flower in any location to light up a dull corner.

This is the time to divide and transplant your choice iris. It needs to be done only every three or four years but there is always that pet friend who could be made so happy with a start of your colorful iris. Any which do no measure up to your standards of beauty, discard to the rubbish heap, don't give to an eager friend.



Says the Barrister

You've read about "probation" and "parole" for persons convicted of a crime... but you didn't know the details of how the system works.

This is really a scientific matter and I may not have the whole story but, as I understand it, this is about the way it works.

After a person is convicted, the probation and parole officers in-

vestigate the circumstances of the offense for which he or she was convicted. They also look into the character and background of the offender and make their report to the court or the parole board. After it gets the report, the court decides whether to put the offender in jail, set a fine, or prescribe probation.

Probation and parole are much more than a gesture of leniency. Only good risks are granted probation and parole. Each case demands supervision that is designed to meet the needs of the individual.

SUPERVISION amounts to firm, friendly and understanding help given one human being by another; replacement in normal circumstances so far as is possible, with a job, a home and wholesome recreation. Along with this goes the discipline of living up to the conditions set by the court.

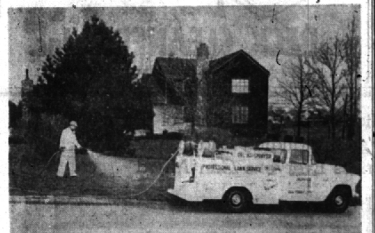
Appointed 2nd Lt.

Gilbert T. Teifer, son of Mr. and Mrs. G. L. Teifer, 780 Greenwood, Birmingham, was appointed Second Lieutenant in the U.S. Army Reserve at the Army Reserve Officers Training Corps commissioning ceremony at Stanford University. Lieutenant Teifer majored in architecture and was commissioned in the infantry.

ELLIOTT UPHOLSTERING
Creators of Fine Living Room Furniture
VISIT OUR NEW SHOWROOM
TABLES — LAMPS — CARPETS
Open Evenings by Appointment **ELLIOTT FURNITURE**

Your Lawn Sick - Yellow - Full Of Weeds - Crab Grass - Ants?

WE SPECIALIZE in lawn spray feeding, weed, crab grass and pest eradication, build healthy turf, take guesswork and worry off your shoulders.



NEW SCIENTIFIC materials and equipment provides you a lush green, healthy, pest-free lawn all season long without fuss, muss or worry on your part, and at lower cost than you can do it yourself. Time-tested and proven. Results guaranteed. Call us for free estimates. You are under no obligation.

FERTILIZE — BLOOMFIELD LAWN CULTURE
LI 8-0171

Let RIDLEY help you look your loveliest in cotton

here's value

Cotton Dresses

beautifully cleaned and finished— as low as

\$149

cash & carry

Something wonderful happens when you have your cotton dresses cleaned by Ridley! They're so clean—so crisp—so smooth—fresh as a daisy—with all the original body restored with Ridley's sizing method. So bring those cotton dresses to Ridley real soon!



Ridley SERVICES
LAUNDRY
DRY-CLEANING
CARPET CLEANING
Visit Ridley's "Cash and Carry" store
361 E. MAPLE Near Woodward

PORCH SHADES



In stock for your convenience widths 3 feet to 12 feet by 7 foot drops
WE ALTER SHADES FOR PERFECT FITTINGS
3 colors to choose from, priced from \$5.95 to \$29.95
Take advantage of our planning and installation service

KIRSCH DRAPERY HARDWARE
TRAVERSE RODS for corners, bays, etc.
CAFE RODS
Solid rods and tubular brass rods

SPECIAL OF THE WEEK
LUBRICATION \$1.00 Reg. \$1.50 Value
with oil change

Announcing the winners of
Four Bikes given away by TRIANGLE SUPER SERVICE

- R. E. Brown
- Mike Hermoyan
- Michael Baker
- R. Marzolino

TRIANGLE SUPER SERVICE
Woodward at Adams MI 4-9853
1181 S. Woodwafd FREE PICK UP & DELIVERY MI 6-7626

BEAUTIFUL FORMICA DINETTES
AVAILABLE IN BLACK WROUGHT IRON AND CHROME
MADE TO ORDER

ANY \$59.95
Lifetime Guarantee On All Chrome
26 Styles — 26 Colors — All Stores

Open Daily 10-8:30

Beautiful FORMICA BUFFETS Made To Order
METALMASTERS MFG. CO.
4600 N. WOODWARD, Near 14-Mile Road Liberty 9-3011

YOUR WINDOWS ARE THE FOCAL POINTS OF YOUR HOME

WINDOW SHADES \$189 TO \$395

CHOOSE FROM A LARGE SELECTION OF FABRICS (Including Decorator Colors)
Ask About Room Darkening Shades

VENETIAN BLINDS and SHADES CLEANED and REPAIRED
See Our Advertisements in the Yellow Pages for Drapes and Window Shades

BESSENGER'S
23535 Woodward Ave. Near 9 1/2 Mile Rd. Established 1927 Ph. LI 1-4936

CONVINCED the small-car field is your limit?

READ THIS STARTLING FACT

5 out of 10 Smaller Cars wear a Pontiac Price Tag —yet none gives you Any of Pontiac's Advantages

YOUR MONEY ACTUALLY BUYS UP TO 8.9% MORE SOLID CAR PER DOLLAR IN A PONTIAC!

The so-called "low-price" cars fall far short of Pontiac in actual, measurable car—and your Pontiac dealer has official specification comparisons to prove it! No smaller car comes even close to Pontiac's rock-solid construction... from its rugged X-member frame through every inch of its heavy-duty running gear Pontiac's muscle all the way! This extra lift means Pontiac holds the road like no smaller car you've ever driven... gives you a ride remarkably free of bounce, shake and noise! Put all the facts and figures to your own personal road test. Call your own shots and see how Pontiac's Precision-Touch Controls let you relax to steering, braking and parking ease out of reach of the small jobs!

WITH 4 TO 7 EXTRA INCHES OF WHEELBASE, PONTIAC OUTCLASSES THE SMALLER CARS IN RIDE AND ROADABILITY!

Pontiac's length is built in—not hung on! Smaller cars extend bumpers and fenders to look big, but Pontiac doesn't need camouflage... it is big! Its man-sized 122-inch wheelbase strides over the bumps instead of riding on them. This extra length, plus a carload of new suspension ideas, results in Pontiac's exclusive LevelLife Ride that no car at any price can surpass! Sample a few miles—and you'll never re-enlist in the small-car army again!

NO CAR AT ANY PRICE PERFORMS LIKE A PONTIAC... SMALLER CARS AREN'T EVEN IN THE RUNNING!

If it's proof you want, your Pontiac dealer is loaded with it—point-by-point engineering comparisons and on-the-record facts and figures. No smaller car is designed or built to come close to Pontiac's eye-opening response... its smooth, effortless mastery of every driving demand. Put the facts on America's Number One Road Car to a test and you'll leave the little league for good!

PONTIAC HAS ALWAYS COMMANDED A HIGH TRADE-IN DOLLAR!

When you put your money in a Pontiac you know your investment will be riding high for a long time to come! In fact, over the years, no car has a better reputation for being a top-demand used car. So before you sign on the dotted line for a smaller job at Pontiac's price—get the dollar-stretching good news your Pontiac dealer has waiting for you. Here in the easiest move of your life are the car and the value that will get you out of the small-car class for keeps!

SEE YOUR AUTHORIZED Pontiac DEALER TRADING'S TERRIFIC RIGHT NOW!