

A Blend to Suit Every Taste

A&P COFFEE

MILD AND MELLOW Eight O'Clock	3-LB. BAG 2.55	1-LB. BAG 87c
RICH AND FULL BODIED Red Circle	3-LB. BAG 2.79	1-LB. BAG 95c
VIGOROUS AND WINERY Bokar	3-LB. BAG 2.91	1-LB. BAG 99c

- Spry Shortening 1-LB. CAN 39c 3-LB. CAN 99c
- Joy Liquid 22-OZ. BOT. 65c 12-OZ. BOT. 37c
- Surf GIANT PKG. 12c OFF 63c 2 19-OZ. PKGS. 63c
- Palmolive Soap 3 REG. CAKES 28c
- Vel Detergent 2 15-OZ. PKGS. 63c
- Dial Soap 3 REG. SIZE 37c
- Dial Soap 2 BATH SIZE 37c
- Vel Liquid 22-OZ. CAN 63c
- Ajax Cleanser 2 14-OZ. CANS 25c
- Ad Detergent 50-OZ. PKG. 72c

SULTANA GOLDEN Whole Kernel Corn	A&P—OUR FINEST QUALITY Grape Juice
6 16-OZ. CANS 59c	4 24-OZ. BOTS. 99c

- Fab GIANT PKG. 75c 2 19-OZ. PKGS. 63c
- Breeze DISH TOWEL IN GIANT PKG. WASH CLOTH IN REG. PKG. GIANT PKG. 78c
- Lux Soap REG. SIZE 3 FOR 28c 2 BATH SIZE 27c
- Silver Dust GIANT PKG. 78c
- Wisk Detergent LIQUID 16-OZ. BOT. 37c 32-OZ. BOT. 67c
- Lifebuoy Soap REG. SIZE 10c 2 BATH CAKES 29c
- Rinso White 2 23-OZ. PKGS. 63c
- Chiffon Liquid 10c OFF 12-OZ. CAN 27c

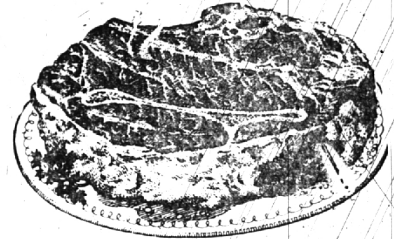
A&P WHITE MEAT Tuna Fish	SHORT GRAIN Sultana Rice
3 7-OZ. CANS 89c	2 1-LB. PKGS. 27c

- Ivory Soap LARGE CAKE 15c
- Spic and Span GIANT PKG. 83c 16-OZ. PKG. 27c
- Cheer GIANT PKG. 75c 2 21-OZ. PKGS. 63c
- Ivory Snow GIANT PKG. 78c 2 12 1/2-OZ. PKGS. 65c
- Duz GIANT PKG. 75c 2 20 1/2-OZ. PKGS. 63c
- Oxydol GIANT PKG. 78c 2 19-OZ. PKGS. 65c



You Can Put Your Trust in A&P "Super-Right" Meats

Enjoy Tender, Tempting Beef Roast From A&P!



BEST BLADE CUTS

CHUCK ROAST LB. 39c

"SUPER-RIGHT" GUARANTEED FRESH

Ground Beef LB. 39c

ALLGOOD BRAND

Sliced Bacon LB. 39c

Fancy Sliced Bacon "SUPER-RIGHT" LB. 49c

"SUPER-RIGHT" QUALITY

Spare Ribs 2 TO 3 LB. RIBS LB. 39c

"SUPER-RIGHT" ARM OR ENGLISH CUTS

Beef Roast LB. 49c

"SUPER-RIGHT" PLAIN OR GARLIC FLAVORED

Ring Bologna LB. 39c

HIGHLINER BRAND—COD, HADDOCK OR OCEAN PERCH

Fish Fillets 5-LB. BOX 1-43 LB. 29c

ANN PAGE—APRICOT, PEACH OR PINEAPPLE

PRESERVES

2 LB. JAR 49c

Grape Juice A&P—OUR FINEST QUALITY 4 24-OZ. BOTS. 99c

Iona Peas EARLY-JUNE 4 15 1/2-OZ. CANS 49c

A&P Sauerkraut OUR FINEST QUALITY 2 29-OZ. CANS 31c

"SUPER-RIGHT" CANNED

Luncheon Meat

3 12-OZ. CANS 89c

SAVE UP TO 40c ON 3 CANS

- Libby's Cut Beets 3 16-OZ. CANS 29c
- A&P Peaches HOME-STYLE ELBERTAS 3 29-OZ. CANS 95c
- Premium Crackers NATIONAL BISCUIT 1-LB. BOX 25c
- Butter Cookies HEKMAN 10-OZ. PKG. 29c
- Wesson Oil PT. BOT. 39c QT. BOT. 71c
- A&P Tuna Fish WHITE MEAT 3 7-OZ. CANS 89c

MICHIGAN GROWN

McIntosh Apples

4 LB. BAG 39c

Maine Potatoes U. S. NO. 1 15 LB. BAG 59c

Seedless Grapefruit RUBY RED 5 LB. BAG 39c

California Broccoli BUNCH 25c

Frozen Potato Puffs DORANN BRAND 2 9-OZ. PKGS. 49c

MICHIGAN, U. S. NO. 1

Yellow Onions

3 LB. BAG 19c

JANE PARKER, TWO 8-OZ. BAGS IN BOX

Potato Chips

REGULARLY 69c 1-LB. BOX 59c

SUNNYBROOK FRESH, GRADE "A"

Large Eggs

DOZEN IN CTN. 47c

- Apple Pie REGULAR 55c VALUE 8-INCH SIZE 45c
- Loaf Cake JANE PARKER MARBLE ICED ONLY 29c
- Danish Nut Ring JANE PARKER COFFEE CAKE ONLY 35c

JANE PARKER SLICED

White Bread

2 1 1/4-LB. LOAVES 35c

- Ched-O-Bit PROCESS AMERICAN OR PIMENTO CHEESE FOOD 2 LB. LOAF 73c
- Sliced Mel-O-Bit PROCESS CHEESE 8-OZ. PKG. 29c
- Sharp Cheddar Cheese WISCONSIN LB. 59c
- MARVEL—VANILLA OR NEAPOLITAN

Ice Cream

HALF GAL. CTN. 69c

All prices in this ad effective thru Sat., Jan. 5th

KRAFT'S SPREAD Cheez Whiz 8-OZ. JAR 31c	KRAFT'S MIRACLE WHIP Salad Dressing 16-OZ. BOT. 35c	KRAFT'S PHILADELPHIA Cream Cheese 2 3-OZ. PKGS. 29c	KRAFT'S PLAIN OR PIMENTO Velveeta 2 LB. LOAF 85c
--	--	--	---

