



Newest Branch of the Community National Bank Located Across from McManus, Jobu and Adams on West Long Lake Road in Bloomfield Hills.

You're Invited To View All That's New In Modern Banking

OUR NEWEST BRANCH BANK IN BLOOMFIELD HILLS IS DESIGNED TO OFFER YOU FAST, EFFICIENT SERVICE

We extend an invitation to all to visit our newest branch bank, a building designed to offer a new concept in personalized banking service. This new bank has 8 tellers to assist you with fast, efficient service . . . Safe deposit boxes to safeguard your valuables and spacious lounge for relaxed banking. Plenty of free parking too.

Formal Opening January 25th

ADDITIONAL BANKING HOURS FOR YOUR CONVENIENCE:

Monday - Tuesday and Thursday 10 to 3 • Wednesday 10 to 12 • Friday 10 to 3 • Saturday 9 to 12

*"Park and Bank With Community
Where Thousands Save Millions"*

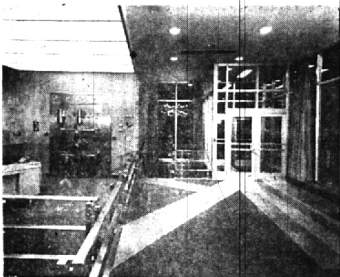


Member Federal Deposit Insurance Corporation

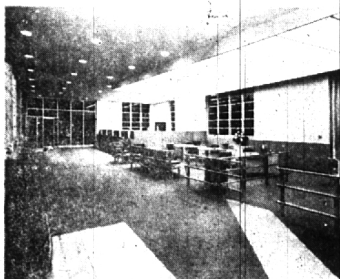
Community National Bank

O F P O N T I A C

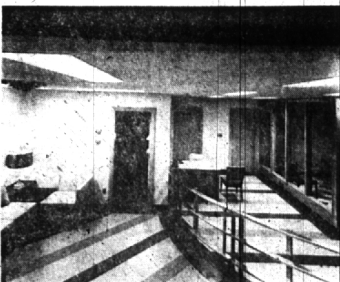
Offices at W. Huron at Tilden - N. Perry at Glenwood
Walled Lake - Keego Harbor - Milford - Union Lake
and Bloomfield Hills



Interior view of main entrance showing stairway to ladies lounge and conference room.



View of main lobby showing teller cages and new sit-down teller's desk.



Lady's lounge and view of conference room in lower level.