



ARMY CPL. JAMES R. WHEELER (left) of Birmingham, Mich., visits in Italy with the Honorable Gerald R. Ford, Jr. (R-Mich.), representative from the 6th congressional district during the latter's tour of the Southern European Task Force. He is the son of Mr. and Mrs. Joseph S. Wheeler, 240 Ravine, Birmingham. Cpl. Wheeler is assigned to the 543rd Field Artillery Missile Battalion in Italy. (U.S. Army Photo)

BIRMINGHAM YMCA

Further details on these items may be obtained by contacting the 'Y'.

The Birmingham Toastmasters Club #257 of Toastmasters International, known as the T.M.T. Tuesday Night Toastmasters, is having its regular meetings at the Birmingham YMCA each Tuesday at 6:45 p.m. The meeting starts with dinner, and a program involving all those in attendance follows. Because of transfers among business men, there are a few openings for men desiring the basic course of 12 speeches.

If you are interested in volleyball and want to do something about that waist line, you will want to join the 'Y' business men's volleyball group, meeting each Wednesday at the Pierce School from 7 until 8:30 p.m. Men new to this activity are welcome. 'Y' membership is required, and each player should bring clothes suitable for play and gym shoes. Robert Kirkpatrick is in charge and will be glad to see you.

For women interested in reducing weight control and exercising with diet instruction, a proposed class in aerobics will be conducted at the Birmingham YMCA starting Friday, Jan. 26 and continuing for 8 weeks from 2 to 3 p.m.

Members of the Birmingham YMCA membership committee will attend the Michigan State membership workshop at the Fisher branch

YMCA Saturday. Representing the local group are Arthur Blakeslee, chairman; Edwin Kierhart, secretary; Elaine Jones, Marion Cannon, Velda Robbins, and Ernest Robinson.

Lynn Russell is working on the planning committee, and keynote speaker of the morning session is Alvin Harlan. A. Eric Ayers will introduce the speaker.

A series of eight lessons in creative dance under the guiding hand of Norma Carter will be conducted by the Birmingham YMCA, starting Jan. 16. Classes will meet from 8:15 until 9:30 p.m. at the Pierce school, continuing through March 6. Full details may be obtained from the Birmingham 'Y' or Mrs. William Gordon at 2552 Penbrook avenue. Size of class will be limited, to insure adequate participation and instruction.

Ridgeway Players Cast Cowan, Walker In 'Anastasia'

Two Birmingham residents are members of the cast of the Ridgeway Players' production of "Anastasia," Broadway stage and Hollywood film success.

Health Cowan, 125 Aspen Road, and Gordon Walker, 31227 Pierce street, will appear in the Marcelle Maurette story of Czarist Russian intrigue when the play is presented to the public Jan. 11, 12, 17, 18, 19 at the Rykoshale Playhouse on W. Ten Mile road.

the Country Market is Proud to Present

PRIZE 4-H BEEF ROUND-UP!!

Featuring the finest of Mich. Corn-fed Beef with Finer Flavor from the "Water Wonder Land"

What is 4-H Blue Ribbon Beef?

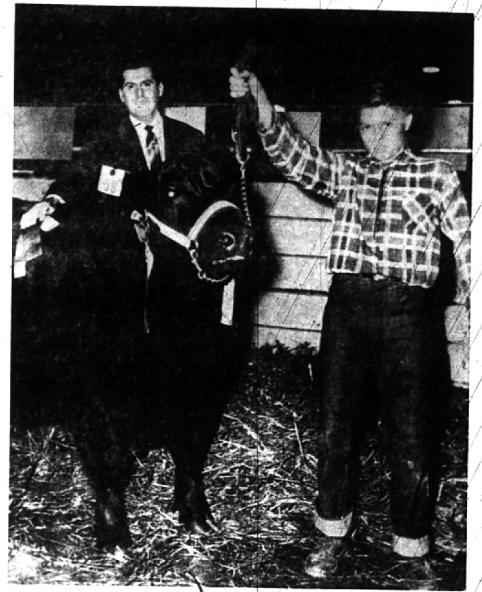
In the early 1900's the 4-H Club was organized for youths from the ages of 10 to 21. Their symbol, a four leaf clover, each leaf representing the letter H stands for: Head, Heart, Hands, Health. Since then the organization has spread throughout the United States and possessions and into 25 other countries. Every year throughout the country hundreds of counties have 4-H fairs where the handicraft, agriculture and livestock produced and raised by the 4-H organizations are exhibited and judged by professional judges as to quality of product or workmanship.

The Country Market is proud to offer this 4-H Blue Ribbon Beef from the 4-H Fair of the State of Michigan. This Prize Beef was bought by us under the guidance of the Professional Buyers of the Jack Goose Packing Co., quality beef packers for over 25 years.

All of the fine cattle, at the 4-H Fair, were raised scientifically and pampered with love, pride and care by their farm youth owners. The steers are stocky well formed and covered with a beautiful layer of snow white fat. There is no finer beef at any price.

It is with particular pride that we can offer you, our customers, the RESERVE CHAMPION of the Black Angus Breed, raised by Lynn Swindlehurst of Isabella County, in addition to our other prize beef.

These cattle were purchased at the Livestock Show on December 6th and are offered to you now well aged to give the supreme in good eating . . . We invite you to try it TODAY!



Joe Bacarella, our meat manager, shown with Lynn Swindlehurst and his prize winning steer.

4-H BLUE RIBBON PRIZE BEEF PRICES

-ROASTS-

Chuck Roast 59^c lb.

STANDING RIB lb. 99^c

BONELESS RUMP lb. \$1.19

SIRLOIN TIP ROAST lb. \$1.19

ROUND BONE POT ROAST lb. 69^c

-STEAKS-

Round 89^c lb.

T-BONE lb. \$1.39

PORTERHOUSE lb. \$1.49

SIRLOIN lb. \$1.29

SIRLOIN TIPS lb. \$1.29

RIB lb. \$1.29

ARMOUR'S STAR

-Quality Products-

Breakfast Links lb. 59^c

Country Sty. Link Sge. lb. 49^c

Roll Sausage lb. roll 39^c

Frankfurters lb. 49^c

Beer Salami Chunk lb. 59^c

Thuringer lb. 59^c

Fresh Lean

GROUND BEEF 39^c lb.

DAIRY PRODUCTS

Remus **CREAMERY BUTTER** 59^c lb.

FROZEN FOODS
Birdseye 6 oz. Can
ORANGE JUICE 4 For 69^c

FRESH PRODUCE

Golden Ripe
BANANAS 2 lbs. 25^c

Chase & Sanborn COFFEE Vacuum Packed Pound Tin **79^c**

AJAX CLEANSER 10^c Pillsbury—White, Yellow, Chocolate, Spice, Orange
CAKE MIX 2 Pkgs. 59^c

All Popular Brands **GUM** Your Choice 6 pkgs. **15^c**

Creamettes Elbow **MACARONI** pkg. 10^c Del Monte Cut Green **BEANS** 2 303 Cans 39^c

TIDE Large Box **25^c**

Appleberry **SAUCE** 2 No. 303 Cans 39^c Charmin Facial **TISSUE** 400 Cnt. 2 for 39^c

Campbell's Chicken Noodle **SOUP** 2 Cans **25^c**

Calif. Contadina—Sliced or 1/2 **PEACHES** 2 Cans 59^c Viasic Sweet 16 oz. Jar **GHERKINS** 39^c

Domino Brown or Confectionery **SUGAR** Your Choice **10^c lb.**

Tall Can **PET MILK** 3 For 37^c Jiffy 40 oz. Pkg. **BISCUIT MIX** 29^c

cheerfully
and without extra charge



gives you this extra service when they clean your **rugs**

Ridley rolls up your rugs . . . and re-lays them . . . putting all the furniture back in place. You don't have to raise a finger to help with this dreaded, back-aching job . . . Ridley's courteous, careful service men do it all . . . it's part of Ridley's complete rug cleaning service! Call Ridley . . . not only for the best rug cleaning that money can buy, but for the best service as well.

Ridley SERVICES
LAUNDRY
DRY CLEANING
CARPET CLEANING

Dial "O" for operator and ask for Enterprise 6655 (no toll charge).

We Carry a Complete Line of
MACHUS PASTRIES and BAKED GOODS

Country Market
1964 Southfield CORNER 14 MILE RD.

MONDAY thru SATURDAY 9 A.M. - 9 P.M. CLOSED SUNDAYS