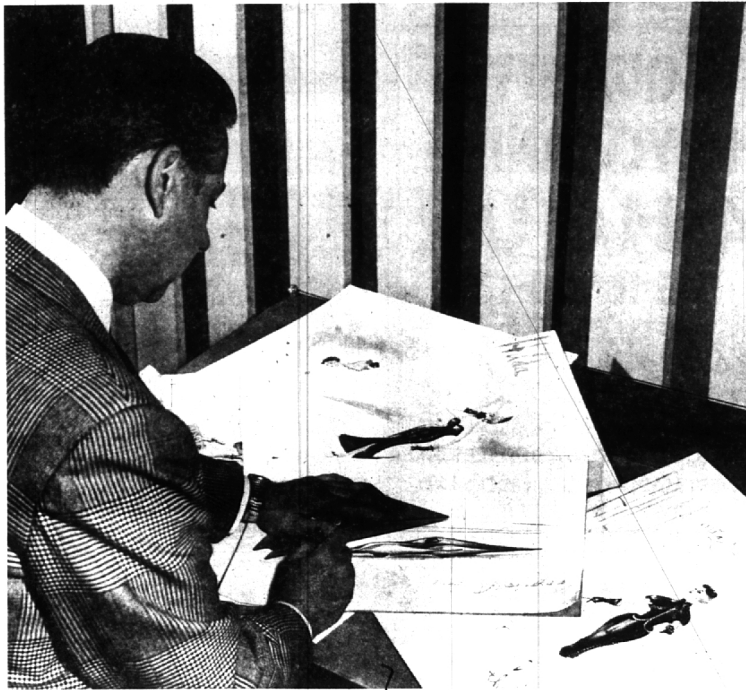


Perhaps one of the greatest achievements of maturity is to regain the fresh and an enthusiastic perspective of youth toward life. To dispel the fog and gloom that disappointments have brought, to be able to appreciate the romps, little comforts and, best of all, to be able to play with and understand, little children.

Fred Lavell....

FRED LAVELL (left) of Franklin, owner of Hilda's, dress shops, plans to be the fastest man on wheels in the world when he races this 345 horsepower DeSoto Golden Adventurer hard-top at the eighth annual NASCAR international speed and safety trials Feb. 3-17 at Daytona Beach, Fla. He also plans to race his own hybrid experimental Allard in the high speed record run for experimental cars. He expects to surpass the existing record of 192 miles per hour.



...Racer, Designer

ON HIS DRAWING BOARD, next to Lavell's latest dress creation, is a design for a dream car to be completed within five years. "This car will literally fly on the ground," says Lavell, who has only been racing sports cars for six years. Two years ago he captured the Bonneville Salt Flats (Utah) National speed trophy, racing 147.27 miles per hour. A former Californian, Lavell, 39, moved to Michigan in 1952. "I wanted to be near the excitement of the automobile industry," said Lavell.

LAVELL, of 26891 Captain's Lane, Franklin, is shown at work (below) in one of his Birmingham dress shops. Occasionally he will design expensive dresses for his clientele. "Actually," says Lavell, "I'm a little of everything — designer, engineer, and mechanic."



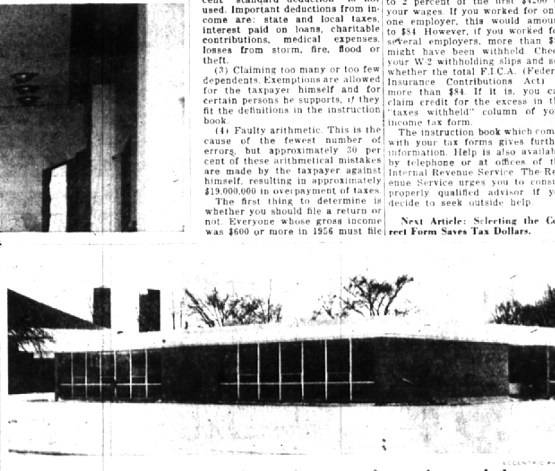
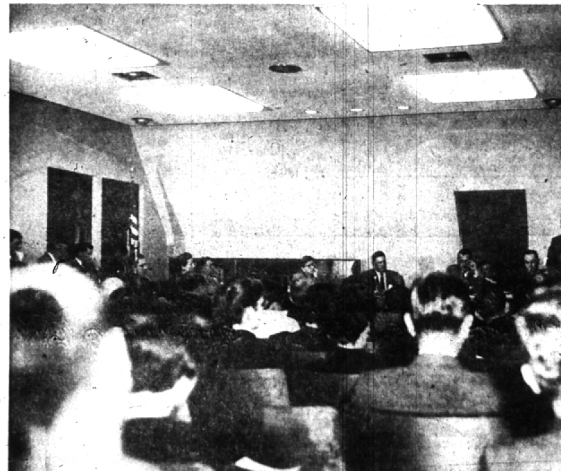
Silver Beaver Award

HONORED "FOR distinguished service to youth", Merritt D. Hill, of 965 Gleggery circle, Birmingham, is shown with Boy Scouts who participated in last week's presentation, as he received the coveted Silver Beaver award, the Boy Scout organization's top award. Hill, who has devoted many years to work with youth, is a member of the executive board of the Detroit Area council. He is general manager of the Tractor and Implement division, Ford Motor company.



Attend Convention

Mr. and Mrs. Louis J. Ouellette, 18775 LaCrosse, Lathrup, attended the National Automobile Dealers association's annual convention last week in San Francisco. C. B. McCracken (right) Dodge's San Francisco regional manager, greeted the Ouellettes. Ouellette is director of dealer relations for Dodge division, Chrysler Corp.



Dedicate Walnut Lake School Addition

THIS \$250,000 six-room addition to the Walnut Lake Elementary school will be dedicated Feb. 11. Dr. Dwight B. Ireland, superintendent of Birmingham school will introduce guests. Kindergarten through third grade will occupy the addition.

INCOME TAX FACTS No. 1

How to Save Tax Dollars

(This is one of a series of articles on federal income tax filing. These articles are based on information provided by the American Institute of Accountants, and the Michigan Society of Certified Public Accountants in cooperation with the Internal Revenue Service.)

Between now and April 15 over sixty million Americans must file a tax return to report their 1956 income to the federal government. On the basis of past experience about 1 out of every 4 returns filed will contain an error of \$2.00 or more. Last year these errors totaled over \$100,000,000.

To help you prepare a correct return and avoid mistakes that cost you tax dollars, this newspaper is printing a series of eight articles prepared with the help of the national and state organizations of certified public accountants. Today's article deals with problems faced by almost anyone who has to make out a return. Later articles will give special hints on deductions you may take, particularly if you own a car, home or business. Use this series along with the official instruction book which comes free with your tax form.

Common Mistakes — According to the results of sampling by the Internal Revenue Service, the mistakes most often made by taxpayers fall into these four groups: (1) Incorrect listing of income. This is the main source of error, partly because of debatable questions involving business income. Individuals make mistakes too by leaving out such items as interest on savings accounts, dividends and contest winnings, or by including items which are exempt. (2) Errors in personal deductions. This category includes the deductions taken when the 10 percent "standard deduction" is not used. Important deductions from income are state and local taxes, interest paid on loans, charitable contributions, medical expenses, losses from storm, fire, flood or theft. (3) Claiming too many or too few dependents. Exemptions are allowed for the taxpayer, himself and for certain persons he supports, if they fit the definitions in the instruction book. (4) Faulty arithmetic. This is the cause of the fewest number of errors, but approximately 30 percent of these arithmetical mistakes are made by the taxpayer against himself, resulting in approximately \$130,000,000 in overpayment of taxes.

The first thing to determine is whether you should file a return or not. Everyone whose gross income was \$400 or more in 1956 must file a return by April 15, 1957. Even if your income was less than \$500 you should file a return if any tax was withheld by your employer and you wish to receive a refund. In any case, if you had as much as \$400 earnings from self-employment you must file a return to report those earnings for social security purposes.

Non-Taxable Income — It is important to remember that all income is not taxable. You should not include in your return any income which is listed in the official instruction book as exempt. This includes interest on state and municipal bonds, most government payments to veterans and their families, life insurance proceeds upon death, gifts and social security benefits. The tax instructions from the Internal Revenue Service contain a list of the types of income which should be included and those which should be omitted from your return.

If You Changed Jobs — Here is a special point to watch if you worked for more than one employer during 1956: You may have overpaid your social security tax. Each employer is required to withhold social security amounts to 2 percent of the first \$2000 of your wages. If you worked for only one employer, this would amount to \$41. However, if you worked for several employers, more than \$41 might have been withheld. Check your W-2 withholding slips and see whether the total F.I.C.A. (Federal Insurance Contributions Act) is more than \$41. If it is, you can claim credit for the excess in the "taxes withheld" column of your income tax form.

The instruction book which comes with your tax forms gives further information. Help is also available by telephone or at offices of the Internal Revenue Service. The Revenue Service urges you to consult properly qualified advisor if you decide to seek outside help.

Next Article: Selecting the Correct Form Saves Tax Dollars.

WASHABLE RUGS

up to 30 lbs. washed & dried
One Day Service

FLAT WORK IRONED

One to Two Day Service

BIRMINGHAM LAUNDROMAT

1000 S. Adams MI 4-8225



ELLIOTT UPHOLSTERING

Creators of Fine Living Room Furniture

VISIT OUR NEW SHOWROOM

TABLES — LAMPS — CARPETS

Open Evenings by Appointment ELLIOTT FURNITURE

5395-5400 DIXIE HWY
WATERFORD — OR 3-1225

VALENTINES DAY FEBRUARY 14



You'll find gifts that go straight to his heart at

Higgins and Frank

At Higgins and Frank — choice gifts for your kind of hearts. We'll help you guide cupid's arrow straight to his mark with a selection of men's wear items that are sure to match his taste. Shop for your valentine at Higgins & Frank — he'll love you for it.



WABLER BUILDING
BIRMINGHAM
DETROIT — CHICAGO
GROSSE POINTE
Open 9:30 to 5:30 Daily
Friday Till 9:00