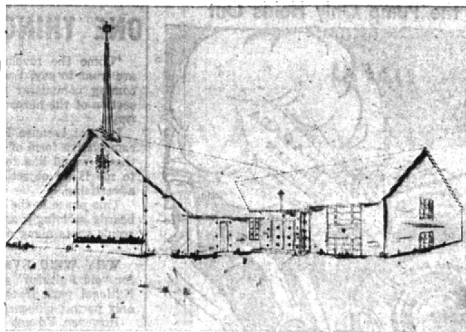


**del Gaudio**  
**CUSTOM MADE DRAPES**  
 DECORATOR FABRICS  
**RUGS—CARPETING—FINE FURNITURE**  
 815 E. Maple, Birmingham MI 6-8353

Nearly everyone comes back again  
 to  
**BIRMINGHAM'S SENIOR REALTORS**  
**MAX BROOCK INC.**  
 MI 4-6700

AMERICA'S SENSATIONAL STEEL SECTIONAL  
**OVERHEAD**  
*Garage Door*  
 Roly Doors are designed for discriminating home owners who want the very best. An overhead, steel sectional garage door that rises quickly, quietly, and smoothly at the touch of your fingertips. Roly Doors will not rot, warp, or absorb moisture. They are bondedized for permanent beauty.  
**MORRISON Roly-Door**  
 SIZES TO FIT ALL GARAGES  
 RADIO CONTROLLED OPERATORS  
 F.H.A. TERMS — FREE ESTIMATES  
**ALL WORK GUARANTEED**  
 18 Years Experience  
 IMMEDIATE SERVICE  
 A LIMITED NUMBER OF FACTORY REPAIRS AVAILABLE AT DISCOUNT PRICES.  
**Graham OVERHEAD DOOR SALES CO.**  
 A Complete Line of Doors and Operators  
 2011 West Big Beaver Midwest 6-5188

**Sensational Offer!**  
**\$100 A WEEK**  
**BUYS A . . .**  
**Remington Rand ADDING MACHINE**  
 Nothing Down—\$1.00 Week  
 Buys this new REMINGTON RAND simplified ADDING MACHINE. . . handles figures faster, more easily and accurately.  
**Birmingham Printing and OFFICE EQUIPMENT Co.**  
 369 East Maple Avenue Midwest 4-4740



THE NEW BEAUTIFUL SAVIOUR Lutheran church will break ground for a church building Sunday. Church site is on Adams road, between Westview and Whitmore. Dr. Norman A. Menter, president of the Michigan district of the American Lutheran church, will conduct the ceremony after 11 a.m. services Sunday. Primary and junior members of the Sunday School will participate with junior-sized shovels. Builder Harry Shirley, of Birmingham, hopes to complete the church by September. Services are currently held in a special worship room in the parsonage at 1260 Whitmore road.

**Gatherings in Homes, Churches to Mark Lent**

Weekly observances of the Lenten season through special services, dinners, and gatherings in church members' homes have been announced by a number of Birmingham area churches. The 40-day season following the custom of early Christians, Lenten services of the Lutheran Church of The Shepherd King will be held in members' homes.  
 On Ash Wednesday Mr. and Mrs. John Benson of Wellington drive will open their home to members of the newly-organized congregation.  
 In following weeks services will be held at the James Eckert's, of Sugar-spring road, the James Loupes, of Mark Court; the Earl Bowers, of Bella Vista; the Edward Kubiak, of Halvard drive; and the Lawrence Demmons of Chestnut road.

Christ Church Cranbrook plans neighborhood study sessions again as part of Lenten observances beginning after March 10. The first Sunday in Lent, groups will meet at times and in homes of their own choosing.  
 Five sessions of study will be correlated with Palm Sunday when the clergy will preach.

FIRST METHODIST church will be open for prayer and meditation on Wednesday from 7 a.m. to 9 p.m. Rev. Dr. Harry O. Martin and the Rev. Allen E. Wettrick will be present to serve communion, and there will be materials furnished for the direction of prayer and meditation.

Again this year the church's Lenten family dinners will be held four days a week, beginning March 7 at 6:30 p.m., when the Rev. Allan E. Wettrick will be speaker. Younger children will be cared for during the programs, with subsequent Thursday's scheduling the Rev. John Parrish of Ferrisdale's First Methodist church, two movie programs, a musical evening, and Dr. Everett Seymour of St. Mark's Methodist Church, Detroit.

NORTH CONGREGATIONAL church will observe Ash Wednesday at an 8 p.m. service, when the Rev. John W. Metter will preach on "Facing the Inevitable." Starting March 11, five Lenten midweek dinner meetings will be held Wednesdays at 7 p.m. After dinners served by Women's association groups, diners will hear and participate in discussions on "What Can We Believe?"

The Congregational church of Birmingham will hold Thursday night pot-luck suppers beginning March 7. Every Wednesday morning during Lent, men of the church will meet for breakfast at 6 a.m., followed by a short worship service. The Women's fellowship will sponsor a Wednesday morning dis-

The Pilgrim Fellowship will hold a before-dinner worship period each Thursday at 7:30 a.m.  
 Special services include the One Great Hour of Sharing March 31, a Palm Sunday afternoon cantata featuring, Stainer's "Passion" by the two choirs, and Maundy Thursday communion and Tenebrae services.

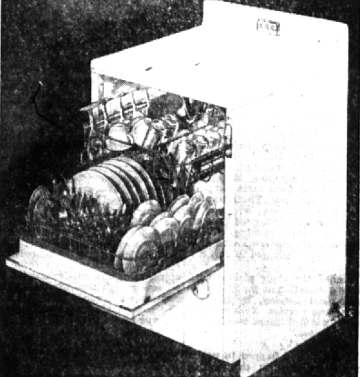
Notices of church groups' meetings and special services must be submitted in writing by 3 p.m. on Thursday before publication date.

**CITY OF BLOOMFIELD HILLS**

The board of review on taxation of the city of Bloomfield Hills, Michigan, will meet in the city hall on East Long Lake Road on Saturday, March 9, 1957 and Saturday, March 16, 1957 from 9:00 a.m. to 12:00 noon and longer if necessary, for the purpose of reviewing the valuation on taxable property set by the City of Bloomfield Hills assessor.  
 Valuation set at this time will apply to City, County and School taxes.

ELMER KEPHART  
 CITY ASSESSOR

no other dishwasher can match these KitchenAid features!  
 HOME DISHWASHER



Separately powered circulated electrically-heated air for most thorough drying of all tableware!  
 Exclusive revolving power wash and power rinse that really does the dishes clean without need for second wash!  
 No pre-rinsing needed—saves water and detergent!  
 Two independently sliding Plastisol racks for easiest loading!  
 Exclusive adjustable upper rack for greatest capacity—easiest loading!

**MILKS APPLIANCES**  
 Serving Birmingham for over 25 Years  
 1493 S. Woodward • MI 6-1300  
 (near 11 Mile) OPEN EVENINGS

**YOU WORK FOR YOUR MONEY**  
**LET IT WORK FOR YOU AT...**  
**CAPITOL SAVINGS**  
 & LOAN ASSOCIATION

CURRENT RATE **3 1/2 TO 4%**  
 REGULAR SEMI-ANNUAL EARNINGS PAID SINCE 1890

FREE GIFTS FOR NEW ACCOUNTS  
 • Lantern Savings Bank  
 • Handsome pen and pencil sets



27215 Southfield - near 11-Mile Road - Phone ELgin 6-7770  
 Open Daily 9 'til 4:30 • Fri. 9 'til 6:00 • Wed. & Sat. 9 'til 12:00  
 • Ask about our "Save-By-Mail" Service

**Introducing**  
**Another Ridley Service**  
 that saves you money, time and hard work!



Why wear yourself out trying to launder heavy, bulky, hard-to-handle sheets and pillow cases at home? Ridley's new Bed Linen Laundry Service assures you beautiful work for only pennies each. Yes, you really save plenty! Try this new service at our risk. If you are not completely satisfied, forget the charge. What could be fairer than that?

**Read these outstanding features . . .**

- Priced by the PIECE—not by the pound.
- No minimum charge—no weighing-in charge.
- You can figure your laundry cost in advance.
- Gently laundered, whiter and brighter, in rain-soft water.
- Professionally ironed, oh-to-smooth.
- Neatly folded . . . easy-to-handle, individual, plastic wrapped package.
- Invisible markings.
- Fast, dependable, on-time service.

**Sheets 21¢ each**  
**PILLOW CASES 11¢ each**

Remember—Ridley's laundry service now specializes only in sheets, pillow cases and men's business shirts.

**Ridley SERVICES**  
**LAUNDRY**  
**DRY CLEANING**  
**CARPET CLEANING**

Dial "O" for operator and ask for Enterprise 6655 (no toll charge) . . . or see phone book for Ridley "cash and carry" store nearest you.

Established 1922  
 You are cordially invited to visit our new establishment . . . especially designed to serve you in your hour of need.

VISITING HOURS:  
 9 A.M. to 9:30 P.M.



**Wm. Vaisel Funeral Home**  
 4375 NORTH WOODWARD AVE. • ROYAL OAK, MICHIGAN  
 BETWEEN THE THIRTIEN AND FOURTEEN MILE ROADS  
 DIRECTORS: WILLIAM V. VAISEL AND EDWARD J. LYNCH  
 Liberty 9-0500

We consider it our obligation to keep the funeral cost within the limits a family can afford.