

So long as one erroneously uses the science of numbers in working out a problem, he will conclude with wrong results. Likewise, he who operates outside of RIGHT to win his bread and butter, is destined for more than indigestion of the stomach. As sure as the sun shines penalties accrue—but only until one forsakes WRONG.

The Birmingham Eccentric

SECTION D

Thursday, February 21, 1957

S'fld High Shop Students Hold Model Auto Races



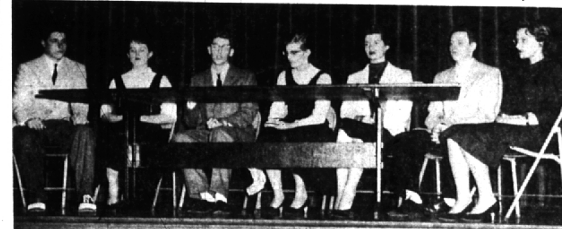
GATHERING SPEED down the 100-foot course is one of 10 model cars which took part in a unique race held last week at Southfield high school. Students constructed model cars in shop and raced them over a 100-foot route with the help of carbon dioxide capsules which were used to propel the models. Cars were attached to a guide wire stretched tighl along the gym floor. Fastest time was 1.15 seconds, or better than 60 miles per hour. Model car projects were part of a shop project at the school.



JUDGING ENTRIES for best design are (left to right) Instructors Ed Littigot, Ted Corombos and David Soule. The cars were made in Southfield high school shop classes instructed by Soule, Ken Thompson and Alby Paris.



FASTEST MODEL CAR in last week's model auto races in the gymnasium of Southfield high school was designed by George Farris (left) and traveled the 100 feet in 1.15 seconds or better than 60 miles per hour. Runner-up was the car owned by Tom Harris (center) which traveled the course in 1.3 seconds. Harris' auto, which took first place in design, speed over the course in 1.3 second flat in qualifying tests. Second place in design was taken by an auto made by Gary Andrews (right). Farris holds one of the carbon dioxide capsules used to power the cars.



Teen-age Problems Discussed at Meeting

TEEN-AGERS DISCUSSED teen-age problems at a recent meeting of the women of First Methodist church. Participating in the panel were Birmingham high school Methodist students (from left) Bill Cartwright, Gerry Barber, Steve Surridge, Helen Cortright (moderator), Betty Nichols, Dick Brown and Barbara Daddi. Each panelist wrote his own talk on problems such as juvenile delinquency and following the crowd.



Detroit Executive Assn. Officers

Robert E. Wunderlich, (center) of 18750 Glenwood, Lathrup, was recently elected president of Detroit Executives Association for 1957. Wunderlich is a partner in the carpenter contracting firm of Wunderlich and Bates, Walter A. Hoffmann, (left) president of Hanson & Credits, was named treasurer. He lives at 710 Highwood drive, Bloomfield Hills. Ralph E. Ralston of W. Shore drive, Orchard Lake, was elected vice president. He is owner of R. E. Dudley & Co. general contractors.

INCOME TAX FACTS No. 3 Tax Hints for Car and Home Owners

(This is one of a series of articles on Federal income tax hints. These articles are based on information provided by the American Institute of Accountants and the Michigan Society of Certified Public Accountants in cooperation with the Internal Revenue Service.)

Your home and your car may be the source of deductions that will lower your Federal income tax. It is important to check all possible deductions because of the savings involved. If you are in the lowest bracket—20%—each \$5 you can find in deductions may mean a dollar in your pocket. For persons with higher incomes, the possible savings are even greater.

The interest on a mortgage is deductible on your Federal tax return. In most cases, payments to principal, as the mortgage is reduced, the interest is less and a larger portion is applied to the principal. Only the interest is deductible in the case of your residence.

Real Estate Taxes

Sometimes the monthly payment also includes an additional amount which the bank holds for the payment of taxes, insurance, etc. In this case the bank is acting as your agent in paying tax on your property. Real estate taxes paid by the bank for you are deductible as if you had paid them directly.

If your home had been damaged by fire, storm or flood, your loss not covered by insurance is deductible. The amount of the loss is calculated by comparing the fair market value of the property just before and just after the casualty. This loss, or the cost of the property, whichever is lower, is reduced by any insurance recovery to determine the loss for tax purposes.

When large amounts are involved it may be wise to have an expert appraisal made immediately after the casualty.

When You Sell a Home

You are not allowed to deduct any loss you may suffer on the sale of your personal residence. However, you may be required to pay tax on a gain resulting from selling the house at a profit.

If, however, you buy and occupy another home within one year before or after the gainful sale of your former home, you are not taxed on the gain at the time of the sale. Alternatively, you can start construction of a home within a year, and occupy it within 18 months after the sale of your old home. If the new home costs as much as you received for your old one (with allowances for certain "putting-up" expenses), you are not taxed on the gain. If your new home costs less, the gain is taxable to the extent of the difference. In any

event, you are required to submit information concerning any sale of your home at a profit, whether or not the gain is taxable.

When you buy a home you generally agree with the previous owner on a schedule of adjustments for taxes, insurance, water rates and similar items. However, you and the previous owner can deduct this real estate tax in proportion to the number of days of the property tax year that each of you held the property—whether or not you have agreed to apportion the tax. You are considered to have paid your share of the tax when you bought the home. This applies to any real estate you may have purchased during 1955.

Deductible Auto Expenses

From the time you buy an automobile you begin to have other expenses which are deductible on your Federal income tax return. Any state or local sales tax you paid on the car purchase is deductible, so is the cost of your license, plates, state inspection fees and interest on an auto loan.

A common deduction in many taxpayers' returns is for state gasoline tax. It is best to keep a record of your gasoline purchases during the year, but if you don't have such a record you can still make a reasonable estimate.

If you had a collision you may be able to deduct for the damage to your own car not covered by insurance. Although driving may have been faulty, you are entitled to the deduction if the accident was not due to your negligence.

Such a loss, or loss from fire, theft or other accidents is deductible in the manner described above in connection with damage to a house.

The instruction book which comes with your tax forms gives further information. It is also available by telephone or at offices of the Internal Revenue Service. The Revenue Service urges you to consult a properly qualified advisor if you decide to seek outside help.

Next Article: Claim All Exemptions for Yourself and Dependents.



LT. COL. C. E. PORTEOUS

Reassigned

With a three-year tour of duty with the Berlin Command behind him, Lt. Col. Charles E. Porteous, 413 Kilderslee, E.Ham, has been assigned to The Infantry School, Fort Benning, Ga. Porteous, commander of the 6th Infantry Regiment's second battalion, was presented a certificate of achievement for outstanding performance. During World War II Lt. Col. Porteous served with the 103rd (Cactus) Infantry Division.

Dated!
SUPER SIZE
SUPER CLEAR
SUPER BRIGHT
Supersnap
PRINTS only 5¢
Take Films to Camera
Counters Served by
HITE PHOTO, INC.



License Deadline Nears

Time is running out for Michigan motorists to obtain their 1957 auto license plates. Deadline is midnight Feb. 28. Birmingham branch of the Secretary of State's office, under management of Delbert Ayles, has sold about 12,000 plates so far and are about 1,500 plates ahead of last year when 26,289 plates were sold by the deadline. This year, for the first time since 1945, Michigan cars will have front and back plates. In many cars this requires purchase of extra mountings for the front plate. Because reweighing is required this year, commercial plate sales is down, Ayles said. Local branch office is located at Chestnut and E. Hunter Blvd.

DRYERS VENTED
All Aluminum Construction Steps Linet and Moisture
\$15.95 Most Models
MERIT ELECTRIC COMPANY
LI 1-2284

Convert plasterboard to **BEAUTIFUL BLONDE PANELING** for only 8¢ per sq. ft. (materials cost)

Pierre's ORIGINAL
Miracle Blonde
the beautiful blonde finish you PAINT ON!
No Sanding ... No Bleaching ...
COMES IN 6 LOVELY NATURAL WOOD FINISHES
Available at all leading paint, hardware and department stores!

Complete kit only **\$4.95**
including priming, finishing and multiple mulling

Birmingham Hardware
152 N. Woodward MI 1-7521
"WE'RE AS NEAR AS YOUR PHONE"

IMPERIAL CAPE COD Special

Stemware: Goblets, sherbets, cocktails, etc. Reg. \$1.10—NOW .69c
Tumblers: all sizes Reg. 85c to \$1.00—NOW .69c
Many other items at relative savings

PONTIAC POTTERY
2099 S. Telegraph FE 2-8642
2 Miles North of Devon Gables on Telegraph 1/2 Mile North of Sq. Lake Rd.
Open Daily and Sunday 10-8

the magnificent
agnavox
high-fidelity television • radio-phonographs

McCallum and Dean
109-411 E. Maple Midwest 1-5230