

Does it ever occur to you that the statutory laws made by man are perhaps the very weakest, poorest, most vulnerable form of armor you can wear for your own security in this imperfect world? Man's inhumanity to man is an old phrase, and ought more universally to be substituted by "God's Divinity toward man."

The Birmingham Eccentric

SECTION D

Thursday, February 14, 1957

Lathrup Congregational Church Marks 10th Anniversary

Compare Progress Since '47

By CAROLYN EIRBACHER

Charter members of Lathrup Community Church Congregational will sit in cushioned pews in their stately colonial church on Sunday recalling Sabbath of a decade ago when seating arrangements required considerable Christian fortitude on the part of the ushers.

Since initial gatherings of the congregation were held in the auditorium-gym of the Lathrup school, these later-day martyrs were required to arrive at 9 a.m. in work clothes to set up chairs and portable pulpit, then dash home and change for the service at 9:45. Afterward the houses were repeated in reverse as the school was returned to its weekday function.

THE CHURCH will observe its tenth anniversary on the anniversary date when the Rev. William Keith of the First Congregational church



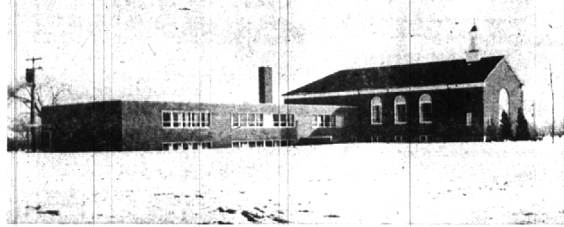
REV. JOHN D. ROSE
Minister

of Kalamazoo will deliver both sermons. Ceremonies honoring charter members of the church will be held.

The Rev. John Rose has been pastor of the church from its inception. Thomas H. Myers was the first chairman of the board of trustees, and Charles Fey its first secretary.

Church choir was led by David B. Redwood, Lathrup's postmaster. The indefatigable ushers were presided over by R. Neil Brannan.

THAT STRONG right arm of the church, the Women's Associa-



IN JUST TEN YEARS the devoted, active members of Community Congregational church have built the above structure at 11 1/2 Mile and Southfield and established their church as an important part of the community's life. Group began meeting ten years ago in a schoolroom.



REV. LORENZO TODD
Associate Minister

tion, held its first meeting in the Arthur Baker home on Woodworth Way. The group of 25 original members has grown to 125 comprising five separate circles.

A pledge of \$5,000 toward the building fund was made by the ladies, and paid off within a year. The T.Y.F.'s composed of teenagers, held a "Tennis Ball" on the school courts and raised \$1,000 for the fund.

The following year brought \$23,000 in pledges, a loan from the Board of Home Missions and a grant from the Kresge foundation. In 1949 ground was broken for the

present church. Designed by architect Bennett Strait of Lathrup, it was completed the next year at a cost of \$120,000.

BY 1952 the growing membership found classroom space inadequate, and Sunday school was held in nearby Lathrup School. The school was having the same difficulties, and reciprocated by holding classes at the church, causing a certain confusion in kindergarten minds.

Following recommendations of a planning committee, the church in 1953 purchased the remainder of

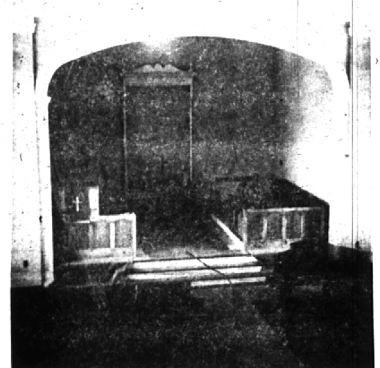
the block and embarked on a program of expansion and renovation. A full time director of Christian Education, Miss Naida Sutch, was obtained to head the church school. Miss Sutch was succeeded this past year by Mrs. Norris Host of Birmingham. Mrs. Lester Aminger is leader of the young people's group.

THIS PAST YEAR the church called its first associate minister, the Rev. Lorenzo Todd from the Eaton Rapids Congregational church. In October the new addition was dedicated by a proud

membership of 750, and 504 junior affiliates.

A banquet and program on Friday, Feb. 12 will commemorate the anniversary. Mr. and Mrs. J. Robert Phelps, general chairman, will be assisted by those committees: announcements and publicity, Mr. and Mrs. Milo Bartenfelder; dinner arrangements, Mr. and Mrs. Ralph Stevenson, and Mr. and Mrs. William D. Whitey program, Mr. and Mrs. Clarence Giersch.

Thomas H. Myers is in charge of contacting former members. The dinner will be served by members of the Southfield Eastern Star.



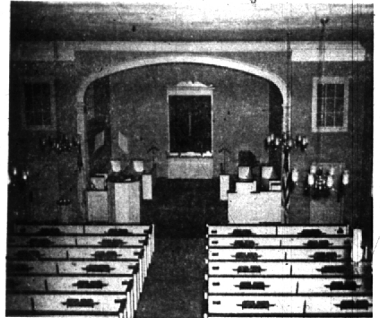
SHOWN ABOVE IS the church sanctuary and altar as they appeared shortly after completion in 1950. Below, as they appear now, with regular pews replacing folding chairs, new lighting fixtures and redecoration enhancing the church's beauty.



FURNISHINGS FOR the women's activities room were mostly dismal cast-offs at first. At left above is the room as it looked then. At right, the room now is attractively fitted with Danish modern furnishings, with color styling and fabrics coordinated by



interior decorator Madeleine H. Tillotson.



SHOWING THE enthusiasm which accomplished so much in ten years are participants in an early fund-raising skit. From left are Mrs. Leslie Briseboise, Mrs. Charles Dameron and Mrs. Robert Gordon. Below are members of the board of trustees who directed the 1954 building fund drive, (from left) E. S. Craig, G. W. Kingsbury, F. A. Wilson and W. B. Commons.



IT WAS A GREAT day in 1949 when members of the congregation gathered on the site of their future church to participate in ground-breaking ceremonies (above).



IT WAS A GREAT day in 1949 when members of the congregation gathered on the site of their future church to participate in ground-breaking ceremonies (above).



IT WAS A GREAT day in 1949 when members of the congregation gathered on the site of their future church to participate in ground-breaking ceremonies (above).

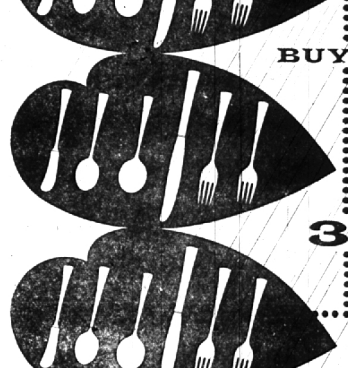
YOU SAID A HOUSE-FULL? IT COSTS LESS TO STAY WHERE YOU ARE!

• Add a room • Finish the attic
• Enclose the porch
• Plan a basement room
• Convert your attached garage
F.H.A. Terms—No Money Down

STUART E. SHELL CO.
SINCE 1947
"Here Tomorrow To Guarantee Today's Job"
1810 S. Woodward MI 4-3713

A Wonderful Valentine Gift... to give... or to get...

FREE place setting of WALLACE STERLING



BUY 3... GET 1 FREE

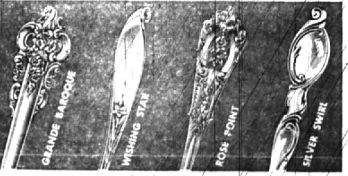
Complete 5 or 6 Pc. Place Setting Worth up to \$52.50 Depending on pattern

The chance of a lifetime to build a complete Wallace Sterling Service... get a FREE Place Setting with every Three you buy! And you can buy SIX - get TWO Free, buy NINE - get THREE Free! Don't wait! This is a LIMITED TIME OFFER!

Available in all 10 Third Dimension Beauty, Sterling patterns
• Grande Baroque, Grand Colonial, Orchid Elegance,
Romance of the Sea, Rose Point, Silver Skirt, St. Christopher,
Stradivari, Waltz of Spring and Washing Day.

LAKES' JEWELERS

"The Sterling Store of Birmingham"
WOODWARD AT MAPLE MI 4-3315



INCOME TAX FACTS No. 2 - Selecting the Correct Form Saves Tax Dollars

(This is one of a series of articles on Federal income tax filing. These articles are based on information provided by the American Institute of Accountants, and the Michigan Society of Certified Public Accountants in cooperation with the Internal Revenue Service.)

The government gives you the alternative of using the simplified income tax form 1040-A, the "short form" 1040, or the "long form" 1040, depending on the amount and circumstances of your income. Selection of the wrong form may cost you unnecessary tax dollars.

The easiest form to file is the 1040-A, and according to Treasury has pointed out: "The law expects records, one out of four taxpayers use it. To be eligible to file a 1040-A form your total income must be less than \$5,000, consisting entirely of wages subject to withholding (or of wages, dividends, and interest, not exceeding more than \$100 of such income came from a source outside that listed on your W-2 slips). The simplified form makes no provision for "Head of Household" status or itemized deductions. If you use this form the government will figure your tax and send you either a refund or a bill, if you so desire. However, for the first time this year, you can compute your own tax on form 1040-A and either send in the balance due with the return or show thereon the amount of refund you have coming.

Whether to Itemize:
Should you decide to use the regular form 1040 you still have the choice of itemizing deductions or using a standard deduction which amounts to about 10 percent of your income. If your income was less than \$3,000 and you use the standard deduction, you determine your tax from the special table given in the instruction book.

You are likely to save by itemizing if you:

- (1) Own real estate
- (2) Had unusual medical expenses
- (3) Had deductible child-care expense
- (4) Suffered losses from fire, storm, accident or theft
- (5) Made fairly large contributions

It is important to remember that if you incur such expenses as transportation, meals or lodging in connection with your work, check carefully the instruction book to find how these expenses may be deducted even though you decide to use the standard deduction.

If your deductions are close to 10 percent, it is wise to itemize them and figure your tax both ways to see which results in the smaller tax. As the Treasury Department

Married Couples:
Most married couples save tax dollars by filing a joint return instead of separate returns. This is because the tax is figured on a joint return as if the husband and wife each had one-half the total income (even though the wife may actually have had no income). Income-splitting, as it is called, may bring the couple down into a lower tax bracket.

Watch for the exceptions, however. If you had capital losses or unusually high medical expenses, you will be wise to figure both joint and separately to see which results in less tax.

If you are supporting a dependent and maintain a home for that person although you are single, widowed, divorced or legally separated, you may be able to qualify as a "head of household" and figure your tax on a special table which gives you part of the advantage enjoyed by married couples filing joint returns.

Surviving Spouse:
Also if your husband or wife died in 1954 or 1955, and you have as a member of your household a dependent child or stepchild, you are entitled as a "surviving spouse" to the same income-splitting benefits this year as you would have on a joint return—unless you remarried before the end of 1956. The privilege to file as a surviving spouse applies to the first two years following the year in which your husband or wife died.

The instruction book which comes with your tax forms gives further information. Help is also available by telephone or at offices of the Internal Revenue Service. The Revenue Service urges you to consult a properly qualified advisor if you decide to seek outside help.

Next Article: Tax Hints for Car and Home Owners.