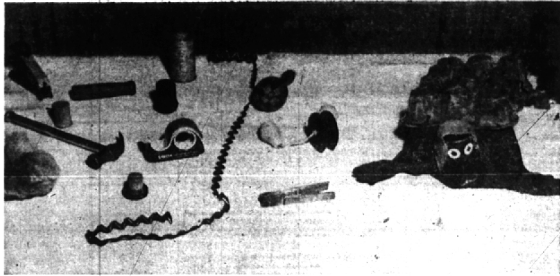


FINISHED PUPPETS displayed by their creator, Mrs. Donald Howarth of Oakland avenue, who will illustrate the techniques in making them at a workshop for leaders working with children.



"ODDS AND ENDS" found around the house... spring type clothespins, typewriter reels, scotch tape and dispenser, crutch tips, spoils, staples, rick-rack and darning egg... which go into the makings of puppets.

Workshop to Demonstrate 'How to Make Puppets'

A puppet workshop for all leaders working with children and are of special interest to boys. Boys find little interest in using a needle and thread and these puppets are unique in this way, states the maker, Mrs. Donald Howarth. They are fastened by the use of thumbtacks, rubber bands, scotch tape and staples.

One of her creations is an egg carton turtle. First a cardboard, molded egg carton is painted in appropriate colors and hind legs cut out of cardboard are attached. Make separate body of sock with Schaefer, shadow and cardboard arm inserted, or cut it from any puppet; Mrs. James Scribner, making hand marionettes; and Mrs. Donald Howarth, odds and ends puppets, sewed Mrs. Walter Patton will do painting of backdrops.

There will be three stages set up, which are types that may be used by children's groups... a fist puppet stage, the Birmingham Puppeteers' own small stage, and a stage made of pipe. The Baldwin Library is lending books on puppetry to the workshop, and there will be scripts that may be borrowed.

Materials for these include such things as scotch tape, typewriter, ribbon, sometimes blind pulls, pipe cleaners, spring type clothes pins, buttons, corks and TV dinner plates.

Patterns will be available for these puppets and others such as workshop, will feature "odds and spoils" squirts, dishpan, darning ends" found around the home... egg head and dragon fist puppet.

On Honor Roll
 LATHRUP—Nina Yauch, daughter of Mr. and Mrs. Leland Yauch, 28624 Eldorado, was among 28 students included on the first semester honor roll announced recently by Dr. E. M. Rasmussen, Dean of Dana college, Blair, Neb. Nina maintained an average of 8.10 out of a possible 9 for the semester.

Birmingham's Shop of Books, Stationery and Gifts . . .

Invites Your Inspection of Beautiful New

Wedding Gifts

in GLEAMING SILVER
 TREASURED CHINA
 GRACEFUL CRYSTAL
 EXQUISITE LINEN



La Belles
 157 WEST MAPLE

Don't Buy Any Water Softener....
 until you've seen...
 the New 1957

ALL-O-MATIC

ELECTRIC WATER SOFTENER

\$249.00

- ★ 100% Automatic
- ★ Regenerates while you sleep
- ★ An Unlimited Supply of Sparkling Soft Water

FULL WRITTEN GUARANTEE
 ★ No Money Down ★ 36 Months to Pay

Water Softener Supply COMPANY

243 Briggs Bldg., Birmingham, Mich.
 Midwest 4-4357 Midwest 4-4334

COMMUNITY HOUSE CALENDAR

- Thursday, February 14**
 7:30 p.m.—Recovery Group
 8 p.m.—Horticultural Society
 8 p.m.—Painting Class
 8 p.m.—First Aid Class
 8 p.m.—Points Away Class
 8 p.m.—Photography Class
 8:30 p.m.—St. Columban's Card Party
- Friday, February 15**
 9 a.m.—Silver Class
 10 a.m.—Girl Scout Council
 10 a.m.—Senior Men's Club
 10:30 a.m.—Senior Workshop
 1 p.m.—Bridges Class
 9 p.m.—Coterie Dance Club Party
- Saturday, February 16**
 10 a.m.—Painting-Drawing Class
 3 p.m.—Children's Chorus Practice
 7:30 p.m.—Horticultural Society
 9 p.m.—Beta Sigma Phi Dance
- Monday, February 18**
 9 a.m.—Sculpture Class
 Noon—Rotary Club Luncheon
 12:45 p.m.—Millinery Class
 1 p.m.—League of Women Voters
 1 p.m.—Homemaking Class
 1 p.m.—Sculpture Class
 1 p.m.—Oakland Co. AAUW Educational Committee
 5:45 p.m.—Troop 222
 6:30 p.m.—Hi-12 Dinner
 8 p.m.—Sculpture Class
 7:30 p.m.—Senior Activities
 8 p.m.—Bridge Class
 8 p.m.—Club Pack 1-7 Committee Meeting
 8:30 p.m.—Dancing Class
- Tuesday, February 19**
 9 a.m.—Millinery Class
 10 a.m.—International Relations Club
 Noon—Exchange Club Luncheon
 12:30 p.m.—Women's Club Card Party
 1 p.m.—Creative Pottery Class
- Wednesday, February 20**
 9 a.m.—Silver Class
 Noon—Lions Club Luncheon
 12:45 p.m.—Roll Call Captains Luncheon
 1 p.m.—Bridges Class
 1 p.m.—Interior Decorating Class
 1 p.m.—Enameling Class
 3:30 p.m.—Painting-Drawing Class
 7 p.m.—Silver Class
 7:30 p.m.—Dale Carnegie Class
 7:30 p.m.—Explorer Scout Training Class
 8 p.m.—Duplicate Bridge
 8 p.m.—Bridges Class
 8 p.m.—Sculpture Class
- Thursday, February 21**
 9 a.m.—Terra Cotta Sculptors
 9:30 a.m.—Musical Practice
 9:30 a.m.—Gardening Class
 9:30 a.m.—Painting Class
 12:30 p.m.—Lewishers Luncheon
 1 p.m.—Painting Class
 3:30 p.m.—Troop 159
 3:30 p.m.—Painting-Drawing Class

LEWIS FURNITURE

LEWIS FURNITURE
 LEWIS FURNITURE
 LEWIS FURNITURE

FEBRUARY SALE!

JUST ONE OF MANY SAVINGS DURING LEWIS FURNITURE'S FEBRUARY SALE



SIMMONS Famous Correct Posture Mattress

Formerly \$69.50 Now only \$49.50!

Simmons Famous Correct Posture mattress for those who need straight-as-an-arrow support every night of the year

Hundreds bought this scientifically-designed mattress at \$69.50... and are delighted with their purchase!
 Now you can get yours at \$20.00 off!
 The Correct posture is made to keep your spine straight... to prevent the gnawing aches caused by inadequate support.
 So, for healthful, restful sleep from now on, come in and order your Correct Posture mattress. Get the matching box spring too—same reduced price of only \$49.50!



\$5.00 Down—Terms Arranged on Balance

MI 4-4920

HERE'S THE SAME MATTRESS ADVERTISED AT—



Experienced Decorators at Your Service at No Additional Charge

235 PIERCE ST. . . . a short stroll from Municipal Parking Lot

Thank You for Making the Opening of Our New North Woodward Office A Success

Here are the winners of the 30 free door prizes given away during our grand opening celebration:

- | | | | |
|---|---|--|--|
| <p>PHILCO 17" PORTABLE TELEVISION SET</p> <p>Kenneth A. McKee
 2441 Woodland
 Royal Oak, Michigan</p> <p>Elda M. Watson
 650 W. Brockridge
 Ferndale, Michigan</p> <p>Robert Sheldon
 1308 Mayfield Dr.
 Royal Oak, Michigan</p> <p>Mrs. Meryl G. English
 3107 N. Blair Ave.
 Royal Oak, Michigan</p> <p>Emilie D. Socha
 4108 Linwood
 Royal Oak, Michigan</p> <p>Martin Scheidt
 1501 Edgewood
 Berkley, Michigan</p> | <p>SUPER RANCH WAGON BAR-B-Q UNITS</p> <p>Charles Knorr
 15972 Shrewsbury Rd.
 Detroit 21, Michigan</p> <p>Judith E. Berry
 3148 Livorno
 Birmingham, Michigan</p> <p>BLANKETS</p> <p>Mrs. Dora McIsaac
 1010 Larkmor
 Berkley, Michigan</p> <p>Arthur R. Weiner
 25210 Marlow
 Oak Park, Michigan</p> <p>Edward J. Olszewicz
 4015 Normandy Rd.
 Royal Oak, Michigan</p> <p>Betty Jane Richardson
 3230 Tyler Ave.
 Berkley, Michigan</p> <p>Carole Warren
 4412 Cooper
 Royal Oak, Michigan</p> | <p>\$10.00 SAVINGS ACCOUNTS</p> <p>Walter J. Bacon
 3022 Shenandoah
 Royal Oak, Michigan</p> <p>Margaret Marazas
 3625 Kensington Dr.
 Royal Oak, Michigan</p> <p>Paul Nemick
 1107 Oxford Rd.
 Berkley, Michigan</p> | <p>Blanche G. Bonn
 615 N. Campbell Rd.
 Royal Oak, Michigan</p> <p>Constance Furby
 2914 N. Altona
 Royal Oak, Michigan</p> <p>James B. Davis III
 1136 W. Webster
 Royal Oak, Michigan</p> <p>Ray English
 2107 N. Blair Ave.
 Royal Oak, Michigan</p> <p>Frank R. Meyer
 1451 Edgewood
 Berkley, Michigan</p> <p>Dolphine M. Coon
 2167 Manchester
 Birmingham, Michigan</p> <p>Virginia H. Druze
 1902 Westgate
 Royal Oak, Michigan</p> <p>Sandra L. Paemore
 4212 Prairie
 Berkley, Michigan</p> <p>Mrs. Muriel W. Gordon
 1340 Cambridge Rd.
 Berkley, Michigan</p> <p>Alvin Smith
 210 S. Laurel
 Royal Oak, Michigan</p> <p>Florence Gault
 2825 Oliver Rd.
 Royal Oak, Michigan</p> <p>Lillian King
 6905 N. Dartmoor Rd.
 Birmingham, Michigan</p> <p>William J. Allan
 400 E. Brockridge Ave.
 Ferndale, Michigan</p> <p>G. Sprague
 2150 Princeton Rd.
 Berkley, Michigan</p> |
|---|---|--|--|

ASSETS NOW OVER \$96,000,000



MAIN OFFICE—GRISWOLD AND JEFFERSON—WO 5-4774

1406 N. WOODWARD—1 BLOCK SOUTH OF 12 MILE ROAD