

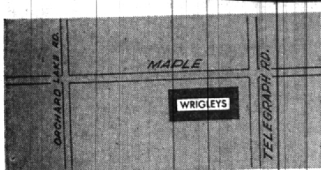
Tues. Dec. 10th.

Grand Opening Celebration

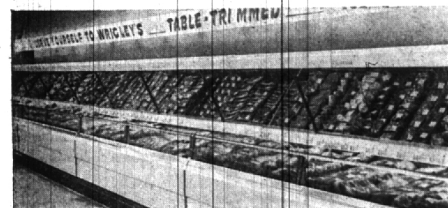
WRIGLEYS

newest market

6592 Telegraph
at Maple Road, Bloomfield Township



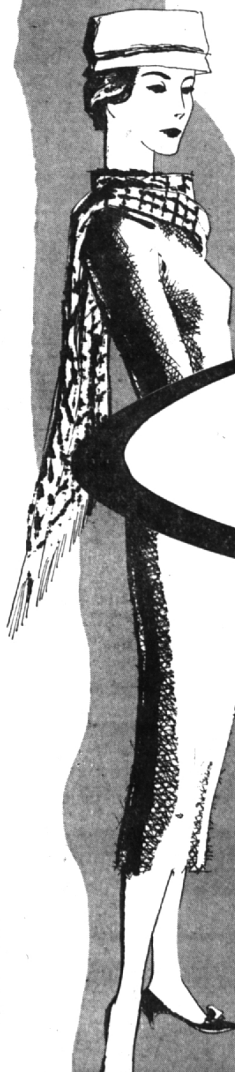
NAME BRAND GROCERIES . . . Where but at Wrigley's will you find 15 kinds of peas? 12 kinds of Tuna fish? 96 varieties of jellies and jams? 53 of soups? And all top brands . . . the names you depend on for fine quality, superb flavor. If you shop by brand, like to pick and choose . . . as we do . . . you'll feel right at home at Wrigley's and your budget will too. Because every day's sale-day at Wrigley's low, low prices!



FINE NATURALLY TENDER MEATS . . . our prized prime and top-choice cuts, personally selected by our experienced buyers. Eased to the peak of eating goodness by old-fashioned, natural aging, table trimmed to remove all excess fat, bone and suet. Naturally Tender meats always offer truly superb flavor, extra tenderness . . . and even greater value . . . for you can eat all you pay for!



KOOL KRISP FRUITS and VEGETABLES . . . only the finest! And four ways fresher too. Bought fresher . . . right in the fields by Wrigley experts. Shipped fresher . . . refrigerated express, right to our doors. Sold fresher . . . cool conditioned by Wrigley's exclusive ice-channels. And served fresher . . . always a longer home life because you buy it fresher, only in Wrigley's freshland . . . where you pay no more (and often, less) for pedigreed produce every time!



Open 9 AM til 9 PM
Tuesday thru Saturday
Grand Opening Week

CHARMING that's what you'll say when you visit your new Wrigley Market next week, for it's truly a charming place to visit and shop. You see it's been designed with you in mind. Color schemed to send your spirits soaring while you shop . . . laid out with wide aisles where everything is so easy to reach and traffic jams are a thing of the past. Truly it's your store . . . You'll feel at home the moment you cross the threshold and glimpse the fabulous displays of the most wonderful foods obtainable and wait till you see the display of "Seal Fresh" meats.

YOU WON'T believe your eyes when you first see them gleaming like jewels in their freezer displays cases. For "Seal Fresh" meats, a Wrigley Exclusive, and available now only at this magnificent new Wrigley's, are the product of years of research a process that brings you meat fresher than fresh. Frozen and packaged in a way that protects natural flavor, natural tenderness, all its juicy goodness as well as its taste tempting appearance. Come see you'll find that "Seal Fresh" meats will charm their way right onto your dinner table. And become a regular shopping habit just like your newest Wrigley Super Market at Telegraph and Maple. See you on the tenth, that's next Tuesday starting at 9:00 a.m.

AND DON'T forget you'll enjoy the added savings you'll get with Gold Bell Gift Stamps. The fun of something for nothing, and it's always something you want when you choose from Gold Bell's selection of over 1500 brand names you trust . . . Useful, practical gifts of value that are so nice to own . . . even nicer when they are free with Gold Bell Gift Stamps. See you on the tenth and while shopping be sure to get your Gold Bell gift catalog. We've got one waiting for you.



Watch for Grand Opening Values at these two Stores in Birmingham:

855 Hunter Blvd.

1855 Woodward

