

Oxford Academy of Music

384 Pierce St. Downtown Birmingham

Accordian Saxophone
and all other Instruments

Phone MI 6-8888

Popular and Classical Departments

- Desk Space
- Beautiful Conference Room
- Personal Telephone Service
- IBM Equipment

3 girls on duty if you should require secretary service

COMMERCIAL SECRETARY

124 S. Woodward
MI 6-9090

Dinner at Machus

Gracious dining without Extravagance

Happy New Year!

Your New Year's Eve Party will be a bang-up celebration with Machus Home Made Sandwich Breads—delicious French Pastries and New Year's Decorated Cakes—beautiful Tea Sandwiches and Hors d'oeuvres for your Cocktail Parties.

Open 8:30 a.m. to 8:00 p.m., daily except Sunday
150 W. Maple, Birmingham MI 4-1016

BUSINESS BRIEFS

Name Troy Man Editorial Director

Robert A. Wason, 2755 Lanegan Drive, Troy, has resigned as associate editor of "The Tool Engineer" magazine to join Denham & company of Detroit as editorial director.

Wason has been in publishing and agency work since 1947. He has been connected with the editorial staffs of "Product Engineering," "Design News," "Purchasing News," and "Electrical Manufacturing."

He also has experience in market research work and industrial publicity. He is an associate member of the American Society of Mechanical Engineers.

Wason is a member of the Troy planning commission and charter father vice president of the Harlan school PTA.



George S. Knopf

Name Ringsred Vice President

Don Ringsred, of 16997 Georgina, Southfield, has been named regional sales vice president of the Alexander film company national division.

Ringsred, formerly assistant to the company president, will handle theater coverage campaigns, industrial and public relations productions and dealer-manufacturer film programs.



Roy M. Nelson

Downey Leaves Commerce Board

Russel M. Downey has resigned as a director and vice president of the Birmingham chamber of commerce because his business now is in Highland Park and he no longer is able to be active in chamber affairs.

Director Walter L. Moreland has been appointed vice president and John W. Knecht named a director to complete Downey's term which would have expired April 30, 1959.



S. H. SCHUYLER

Gift Exchanges

The Birmingham chamber of commerce says the deadline for exchange of Christmas gifts this season will be Jan. 2, 1958. The chamber says members will be sent notices to this effect to post in their stores.

Two New Members

Two new members have joined the Birmingham chamber of commerce. They are Triangle Furniture Co., 128 S. Woodward, and Leon's Parisian Hair Dresser, 292 E. Brown street.

Three B'ham Men Head New Section

Three Birmingham men have been named to executive posts in a new controls section established by Bendix Aviation Corp. to engineer, manufacture and sell tape-controlled production systems, including equipment that will use blueprint measurements to produce a finished part.

George S. Knopf, 1488 Henrietta, formerly executive engineer of the Bendix research laboratories, has been named manager of the new operation; Roy M. Nelson, 1722 Haynes, is sales manager, and S. H. Schuyler, 1245 S. Bates, is manufacturing manager. The new facility will be located at 21820 Wyoming in Detroit.

TWO BIRMINGHAM men helped form the new operation. They are R. Victor Benaglio, 1291 Melton, and Frederick E. Booth, Jr., 2332 Buckingham.

Bendix says the new section will offer a new type of "flexible automation" to industry, from large companies down to small tool and die shops having only a few machines. The firm says the tape, or numerical control process, which largely eliminates the need for manual control in the manufacture of many die parts, jigs and patterns in the production process, will provide substantial saving in tooling cost and production time.

Name B'ham Man Vice Chairman

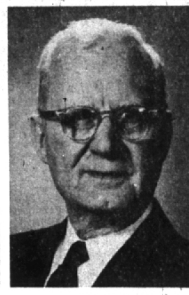
Goy G. Ecklund, of 1280 Fairfax, has been named 1958 membership vice chairman in his region for the National Association of Life Underwriters.

Ecklund will be responsible for the district of Columbia, Maryland, Michigan, Ohio, Pennsylvania, Virginia and West Virginia.

To buy or sell a used automobile, read and use Eccentric Classified Ads.



ROBERT S. MARKER



A. ROY BARBIER

Ad Agency Names New Executives

Appointment of A. Roy Barbier and Robert S. Marker as vice presidents of MacManus, John & Adams, Inc., is announced by Ernest A. Jones, president of the advertising agency which is located on Woodward and Long Lake in Bloomfield township.

BARBIER, a veteran of automotive advertising joined the agency in 1942 and is account executive on the Cadillac motor car division account. From 1932 he was advertising manager of Ford Motor Co.

MARKER, who lives at 4161 W. Orchard Hill drive in Bloomfield township, joined the agency in April, 1956, after serving as ac-



ECCENTRIC PHOTO

Open New Restaurant

The Howard Johnson chain recently opened a new restaurant on Telegraph near Maple in Bloomfield township. Gathered to cut the ribbon and officially open the new restaurant are (from left) Homer Case, township treasurer; Arno Hulet, township supervisor; Mrs. Francis McCarty, assistant restaurant manager; Allan Jacques, manager, and Ernest J. Murray, manager of Howard Johnson's Royal Oak restaurant.

Name Wagoner Production Chief

F. A. Wagoner, 1911 Saxon Drive, Birmingham, has been named production manager at the Highland Park tractor plant of Ford Motor company's tractor and implement division.

Wagoner, who has been general superintendent, assumes his new post Jan. 1. Wagoner became associated with Ford in 1928 and became a foreman in 1936. During the war, he was in charge of aircraft gear machining, and in 1945 was assigned to the Highland Park plant as general foreman in charge of tractor gears. From 1950 to 1951, he was production manager of Eochester Gear company, Goodison, Mich., and returned to Highland Park to become superintendent of gear manufacturing. He was appointed general superintendent of the plant in May, 1953.

B'HAM ECCENTRIC Page
Thursday, December 26, 1957 3-A

How to Build Home Ice Rink

A lot of Birmingham residents are thinking about building ice rinks in their yards, according to a report from Harvey P. Rasch, of the city department of forestry and parks. He said the department had received a number of inquiries on procedure for developing a rink.

Rasch this week issued the following suggestions to help the would-be ice manufacturers:

- (1) First, try to find a fairly level surface. This could be a cement drive, tennis court area, or a nice lawn surface, to mention a few.
- (2) Try to make sure that you are fairly close to a water tap so as to cut down on the amount of hose you will need.
- (3) IF THE area to be used is lawn, try to cut grass close to ground as late in the Fall as possible.
- (4) Be sure ground is frozen several inches deep before any water is applied.
- (5) When you apply water, do not just flood the area. For good ice you have to apply many coats of water. The best manner is to spray entire area, let it set up for at least a half hour, and then apply another coat. Keep this up until you reach the desired depth of ice you feel you need.
- (6) A GOOD way to hold the water in a confined area is to bank the snow around the edges after each snowfall. This will help retain the water on warm days.
- (7) The most important part of the whole project is the weather. The temperature should be at least 22° above zero and going down to colder weather. A good rule here is no water applied below 18° above zero in the daytime, and no water applied unless below 22° above zero at nighttime.

"Experience has proved," Rasch said, "that this type of operation in spraying will not damage your lawn."

Rasch said the forestry and parks department would be glad to answer further inquiries by phone.



Rushing Around Town
To Deliver The
Season's Greetings
To Everyone
In Behalf Of
JAX KAR WASH

New Beauty for You

You'll look your prettiest—whatever the occasion—when you depend on our complete Beauty Service. Permanents are a specialty.

MODERN BEAUTY SALON

271 W. Maple 3 doors West of Kresg's
MI 4-2666

After Christmas CLEARANCE

STOREWIDE SAVINGS

UP TO

1/2 OFF

For Those Gala Parties Ahead . . .

LO-BACK STEP-IN
Corselette
by
GODDESS

Front - zipper, lo - back, with all the comfort and styling you want. Just STEP IN and ZIP UP for the most fabulous fit, superb splits and smoothest lines ever. Nylon satin.

B & C Cups 32 - 39 \$16.50 Each

The Glassford Shop

135 Pierce

S&H Green Stamps Personalized Service by Graduate Corsetiers

MARK ELLIOTT Elliott Opens New Service Station

Long-time Birmingham resident Mark Elliott has opened a Mobil gas service station at 284 N. Woodward, known as Elliott's Upton Service.

Elliott, who lives at 1658 Webster and has been a Birmingham resident for some 10 years, is assisted in running the station by two mechanics.

The station has four pumps and specializes in repair work. Elliott is a member of the Birmingham branches of the Kiwanis and American Legion.

Bank Promotes Two

Robert E. Roehm, of 925 Westchester way, and Robert C. Wandel II, of 2281 Manchester, both of Birmingham, have been promoted by the Manufacturers National Bank of Detroit. Roehm has been elected a vice president and Wandel a second vice president.

Prescription for profit: A want ad by phone or mail.

Holiday fashions so flattering... so festive



We see glamorous, exciting hours ahead, as the holiday season with all its gaieties promises you a wonderful time. To help you fully enjoy the party-filled weeks we have a special group of dresses.

\$25.00 & up

INGRID'S
2875 Woodward
LI 8-0010 (2 Blocks South of 12 Mile)

"LET'S HAVE A PARTY"!!

We still have a large selection of Dance and Party Records — and

"TO OUR FRIENDS — "HAPPY HOLIDAY!"

MARTY'S records
2503 W. Maple MI 6-0927



2503 W. Maple

Kay balm
152 W. MAPLE BIRMINGHAM