

DECEMBER PLANETARIUM PROGRAM

The Star of Bethlehem
—an interpretation

CHRISTMAS WEEK SCHEDULE

TIME: Monday, Dec. 23—3:30 P.M.
Thursday, Dec. 26—2:30 P.M. 3:30 P.M.
Friday, Dec. 27—2:30 P.M. 3:30 P.M.
Saturday & Sunday, Dec. 28-29—2:30 P.M. 3:30 P.M.
COST: Week-days—Adults 50c Children 25c
Week-ends—25c to all (plus museum admission to non-members: Adults 50c Children 25c)

Cranbrook Institute of Science

Lane Pine Road Bloomfield Hills
CLOSED CHRISTMAS DAY

CHRISTMAS CANDY FROM ITALY, ENGLAND AND SWITZERLAND

Score of new things for the late shopper.

NEW PULL LAMPS

Don't forget our House and Gardens and House Beautiful Decorations.

PLENTY OF WRAPPINGS

Open Every Evening Till 9
Sunday 2 to 6

MU 9-1035



For Second Time, B'ham Refuses OK On New Contract

It will not sign a new contract which would give the South Oakland garbage and rubbish authority control over "method of collecting" refuse in member municipalities, the Birmingham city commission reaffirmed Monday night.

Three weeks ago, commissioners struck these three words from a proposed new contract because it was felt such determination of collection methods was rightly only the individual community's responsibility.

A week ago, authority board of directors looked over the Birmingham deletion for the second time, then board voted to ask Birmingham again to sign the contract the authority's way.

BUT BIRMINGHAM this week refused a second time. Commissioner Charles Renfrew said the authority has not given a good reason for rejecting Birmingham's position.

It appears that they think it would just be a nuisance to resubmit it to the other 11 cities. Renfrew commented, "If it's not really important to the authority, then perhaps it will let us have our point."

B of E Appoints Seven Teachers

Seven teachers in the Birmingham public schools for the school year 1957-58 were appointed by the board of education at a short Tuesday night meeting.

Other main agenda items included: Acceptance of the resignations of three teachers effective Jan. 1, 1958.

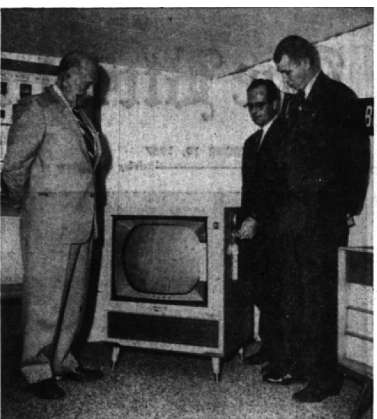
Appointment of Donald Laatsch, mathematics teacher at Derby Junior High, as counselor, effective Jan. 8.

Authorization of Joseph B. Honey to furnish and install an Ex Cel conversion burner in Hill school.

Insurance protection for \$5,000 inside and outside, plus \$5,000 for the vaults at Hill school and for \$5,000 inside and outside with no vault coverage at Birmingham high school.

Approval of landscape planting for Greenfield and Valley Woods schools in the amount of \$3,298.50 as submitted by Woody Acres nursery low bidder.

Authorization of three elementary principals to attend the national convention in Philadelphia this spring.



Sergeant Gets the Picture

There's a lot of pleasure for the Brown family in the TV set presented last week to Birmingham police Sgt. Richard E. Brown (right), of 794 S. Bates, Birmingham. With Brown are (left) Raymond E. Cecil and Carus B. Schmidt, president of Hawthorne electric company. Because the community appreciates the protection and bravery of officers like Brown, a number of citizens contributed to the purchase of the gift for the sharpshooting sergeant. Brown was shot by a burglar in a local home last October, returned fire and killed the 60-year-old ex-convict. Cecil, local real estate man, spearheaded the campaign to present the gift to Brown.

Disposal Authority Gets New Delegate

Oakland County DPW Director Harold K. Schone this week resigned as Birmingham's representative to the N. Evergreen sewage disposal authority. Birmingham city commission named City Manager L. R. Gare, successor.

Removal Prices May Rise

TROY—Troy householders probably will be paying more soon to have their refuse removed.

City Manager C. R. Lukens says that since Troy is a member of the Southeastern Oakland county garbage and rubbish disposal authority, private collectors must deliver to the authority for disposal all refuse collected in the city.

"TO REMAIN a member of the authority," Lukens says, "we must see to it that all refuse is disposed of at authority facilities. Some private collectors, in order to comply, will have to increase rates. This is not due to any fault on their part. It is due to the fact that it is going to cost them more to use an incinerator than to use their present methods of disposal."

"Sometimes in the not too distant future Troy will provide refuse collection service. If this service is financed by means of an additional tax levy, the average cost to the homeowner would be about \$12 per year. If this is financed on a service charge basis, it would cost considerably more."



planning a party?

- "SHRIMP-ON-PICKS" cooked, cleaned and ready to serve
- HOT HORS D'OEUVRES, CANAPES pop 'em in your oven for home-made goodness
- COLD HORS D'OEUVRES for tasty contrast
- TEA SANDWICHES delicious and decorative

All delicious, packaged ready for delivery

OR better yet let us prepare and serve your party whether it be for the cocktail hour of a buffet dinner fit for a gourmet.

MI 4-6466

CORRELL CATERING

GIFT Cosmetics

Our glamorous gifts of her favorite cosmetics are better than mistletoe when it comes to winning kisses for Santa. We have all the names she knows and trusts.

A new concept in elegance. Over 250 sprays of L'ENEL perfume in a stunning black and gold dispenser. Each spray is automatically controlled to avoid waste of precious fragrance.

only \$2.75, retail available \$2.75 each.

LANVIN

the best perfume Paris has to offer

"Arpege", "My Sin", "Scandal", "Pretexte", "Rumeur" \$2.50 to \$25.00

"Woodhue", "Act IV", "Aphrodisia", "Figures", "Flambeau" \$1.50 to \$10.50

D'ORSAY

The champagne fragrance that goes to his heart and yours. "Intoxicacion", "Divine", "Fantastique", "DeBandy"

perfum \$3.25 to \$37.50
eau de toilette \$3.25 to \$10.00 (all prices plus tax)

CHANEL N°5

"Bois De lies", "Gardenia", "No. 22", "Russian Leather" \$3.00 to \$22.50

L'etheric

For that ever special lady on your Christmas list, be sure to choose L'etheric's fabulous creations. "Tweed Mist", "Adams Rib", "Miracle" \$2.25 and \$3.50

Little Lady

Surprise the "Little Lady" in your home on Christmas day with her own cosmetics!

CARON

"LaNuit De Noel", "Fleurs De Rocaille", "Bellodgia-Poivre" and 7 other fragrances. Perfumers 12.50 to 18.75. Lotions 9.00

MILLS PHARMACY

1740 W. Maple at Chesterfield MI 4-5060

Magic Beauty

Face Peeling and Facelifting Without Surgery No Discomfort "NU-FACE"

Scars and Wrinkles Vanish. Certified Stockholm Face Specialist. Hollywood Stars highly endorse Carolyn Nilson System and corrective cosmetics "As the Best". They firm, slim and develop to youthful beauty. Mail order and instructions on request.

carolyn nilson
Stockholm Graduate Face Specialist
Salon . . . 772 E. Maple
2 blocks E. of Woodward Ave.
For Appointment Phone Midwest 6-7873

Toys for fun

\$19.95

\$2.98 & up

\$4.95

\$3.95 & \$4.95

\$4.95

\$5.95

Children can build their own city with Skyline set. \$2.98 & up

Many More Wonderful Toys for Boys & Girls of Any Age

ALICE'S WONDERLAND

362 E. Maple, Birmingham MI 6-1113

Fag Fires Couch

Fire started by a cigarette caused an estimated \$100 damage to a davenport at an 1864 E. Maple apartment occupied by W. R. Stoum Wednesday morning. Birmingham firemen were called at 3:40 a.m.

The Birmingham Eccentric
Published every Thursday at Birmingham, Michigan. The Eccentric Building, 220-224 No. Woodward Ave., The Birmingham County, Inc. Telephone Midway 4-1180.
George W. Averill, President, Editor and Publisher.
Paul N. Averill, Vice-President and Treasurer.
George W. Averill, Secretary.

Entered as Second Class Matter in the U. S. Post Office at Birmingham, Michigan, under the Act of October 3, 1917.

SUBSCRIPTION RATES
(In Oakland County)
The Year \$4.00
Six Months 2.00
Four Months 1.50
(Outside Oakland County)
The Year \$5.00
Six Months 2.50
Four Months 1.80

WE ARE OPEN 'til 9 p.m. 'til CHRISTMAS

It's the "LAST MINUTE" SO HIT THE ROAD FOR

MARTY'S records

WHERE WE CAN HELP YOU WITH THE PERFECT GIFT MUSIC

MARTY'S records

2503 W. Maple MI 6-0927

"Gift Certificates"—any amount

Thrilling Twosome by Syroco!

Gilded Syroco-wood console set for foyer or living room . . . French-inspired elegance at a never-so-low price!

Plate glass mirror and console shelf 39.95
Mirror and matching sconces (not shown) \$32.95
Sconces only, pair 9.95
Complete set of mirror, sconces and shelf 47.95

Jacobson's

home decorative shop

325 No. Woodward Birmingham

2-Hour Free Parking
HAVE YOUR TICKET VALIDATED WHEN YOU MAKE A PURCHASE AT JACOBSON'S