

The Ernest Seaholms' Home Grounds

A new home has been recently built by the Ernest Seaholms at 1587 Fairway drive. It is on a corner lot and the landscape design is worthy of study, admiration, and to see a fine assignment completed in good taste for the fine architecture of the home.

In the front which faces north they have a large curved window which has low trimmed yews at each end of the window and the space between is covered with a fine planting of pachysandra, a low growing groundcover.

THE REMAINDER of the design is carried out using lark hydrangeas, cotoneasters and pink enchantress geraniums in white pots which are elegant white structure as a background. Many places around the perimeter of the home, grass was allowed to grow right up to the foundation, which is very good taste. When in doubt as to your next step in planting, remember simplicity will give you the best eye effect and certainly eliminates "busy work."

At the northeast corner of the home, they have planted a *Eunymia Alata*. This shrub is a variety of *Eunymia* which will grow under favorable conditions seven feet high and it is broader than it is high, so you must allow for its potential diameter.

IT HAS WINGED branches which come out from the base in a horizontal fashion. You will have and use it primarily because it will be a bright rosy color in the fall.



Mrs. Burlingame

constant show of small red clusters of roses.

The cutting garden has distinction with its walk around it made from bricks to form a pattern around the entire flower bed. The bricks were placed in sand.

Blue morning glories are just ready to "pop" on the white garage wall. "We" have been walking around the house and now back on the street, we admire the effect the designer achieved when he formed a "tongue pattern" at the northwest corner of the house and in it he planted seven low growing pfitzers which give a good geometric detail.

THERE IS ALSO a grouping of three flowering crabs on the front lawn, which is following the directive of all flower lovers locally when they say "Let's have a flowering crab as a hallmark of Birmingham on every piece of property."

Columns before in the Eccentric have been devoted to Ernest Seaholms and his many years of public giving of his talents for Birmingham on every piece of his home grounds.



JAMES FOWLER

GENE ROGERS

JOE KERR

Changes in Hills Police Staff

Promotion of one member of the department to sergeant and the hiring of two new officers has been announced by Bloomfield Hills director of public safety, Robert J. Stadler. James Fowler (left), a member of the force since January, 1953, has been promoted from senior patrolman to sergeant. The two new Hills officers are Gene Rogers (center) and Creighton (Joe) Kerr (right).

You'll get cheerful, expert service at
BIRMINGHAM'S SENIOR REALTORS
MAX BROOCK INC.
MI 4-6700

PAY YOURSELF FIRST WITH A SAVINGS ACCOUNT

No need even to come to our office to start your money earning our higher dividends right away. Open your savings account by mail. Write today for information.



3 1/2-4% CURRENT DIVIDEND
CAPITOL SAVINGS
AND
LOAN ASSOCIATION

DOWNTOWN OFFICE
WASH. BLVD. BLDG.
PHONE WO 2-1078

ASK ABOUT OUR "SAVE-YOUR-MAIL" SERVICE

PORTLAND OFFICE
75 WEST HURON
PHONE FE 4-0561

back to school report:

regulation
'Bermuda' Shorts

by
MOORE

Styled functionally for gym abuse, but styled with elegance nevertheless. Long for modesty, amply full, with permanently sew-in creases, form-fitting waist, tapered leg, tunnel belt loops, D-ring buckle, and TAILOR ZIPPER. Made from regulation MOORE Sanforized, Combed Gabardine. In ROYAL BLUE \$4.95



MOORE gymwear

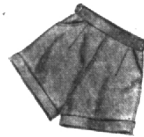
MOORE sport shirt

White, Sanforized Broadcloth, of extra-length for disciplined, stay put action. Pleats in yoked back, button pointed collar, handy pocket. Buttons.

\$2.25

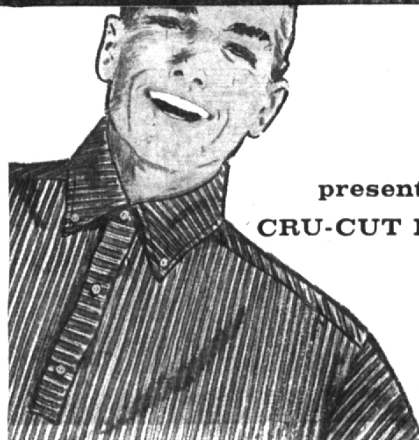
fun for gym...
MOORE shorts

Stretch that's bewitching... helped by adjustable buckles... mod's waist girl's the slimming lines into this regulation outfit for Gym. Styled practically, so you can rough it... but smoothly, for fun in every exercise. Made from Sanforized Sportweil. In (list colors).



\$2.95

FOR BACK-TO-CAMPUS...



presents the
CRU-CUT KNIT

What does smart fashion mean to Cru-Cut college men? Stripes? Yes! Button-down collars? Definitely! Rich, rugged knit textures? Emphatically! And here's the knit shirt that combines them all. Magnificent in looks... great on wear. All cotton... completely washable.

McGREGOR Pencil Stripe Knit \$5.00

F. J. MULHOLLAND CO.

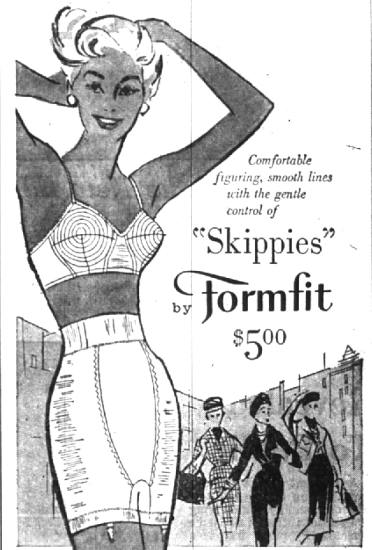
233 N. Woodward Ave.

Birmingham

Featured in your favorite magazines

... featured at

F. J. MULHOLLAND'S



Comfortable
figuring, smooth lines
with the gentle
control of

"Skippies"
Formfit
by \$5.00

All ease, no squeeze! Skippies give you a naturally smooth figure with the feather-light, coaxing control of gentlest elastic. Skippies Pantie No. 815 is made of long wearing nylon elastic net. The satin elastic front panel gives an extra measure of slimming. The 2 1/2 inch waistband nips your waist. White. S.M.L. (Also available as Girlie No. 915.)

Shown with "Romance" Bra No. 566. "Nyl-Bra" circle-stitch hood cups give uplift that lasts the life of the bra. Easy to launder cotton broadcloth. White. 32A to 38C.

\$2.00



JERSEY AT ITS BEST

Jean Lang creates an easy-going design to see you through Fall and Winter. In the smartest of fashion styling, it's loveliest, wrinkle shedding 100% wool jersey with the wanted look... the slim skirt that falls to flowing fullness in back. Sizes 12 to 20.

\$29.98



F. J. Mulholland
company
833 N. WOODWARD AVE.
Charge Accounts Welcomed
We Deliver

3 DAYS ONLY - Thurs.-Fri.-Sat.

KRESGE'S School Special
BIG BUY

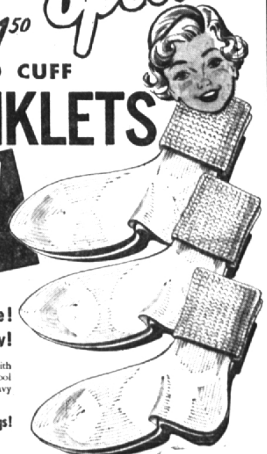
SAVE 50%! Reg. 3 prs. \$1.50 for

GIRLS' TRIPLE-FOLD CUFF

WHITE ANKLETS

this sale only

3 prs. \$1



A super-terrific sale price!
An exciting saving! Stock up now!

Rugged, heavy-woven cotton socks, reinforced with strong nylon at heel and toe strain points! Every school girl is wearing these new popular white socks with heavy fold cuff... get a term's supply now! \$1.11.

Now's your chance for "really big" savings!

W. MAPLE AT HENRIETTA

S. S. KRESGE COMPANY