

### School to Share Development Cost Of New Sewer

Southfield board of education entered an agreement at a special meeting Monday to connect a sanitary sewer extension of the J. L. Hudson Southfield sewer on the west side of Lederle school.

The board will share development costs of the second extension of the sanitary district with Nathan Linden, area subdivision developer. The school, Linden and Michigan Bell Telephone company were granted permission Aug. 5 by Detroit common council to extend the district.

The extension will eliminate the necessity for septic tanks, as originally planned, for the new junior high, scheduled to open this fall.

AS ONLY three weeks remain before school is due to open, the board is attempting to have the sewer as soon as possible. A special meeting will be held Friday to take bids on the sewer construction.

The board awarded a contract to V. Soto for a low overall bid of \$12,100 for roads, parking areas, sidewalks and retaining wall at the Twelve Mile road school.

Low bid of \$11,200 for new oil burner at Lathrup school from Power and Heat Engineering company was accepted on condition that work could be completed by Oct. 1.

GREAT LAKES Hotel Supply company's revised bid of \$11,575 for kitchen equipment at the Twelve Mile road school was accepted. A stove and stainless steel sink from Grace school, will be completed to use at the new school.

Dolger and Rollason, architects for the addition to Southfield high school, are presenting a progress report showing revised plans for 21 teaching stations, an auditorium, band room and chemistry rooms to be added on the south side of the school. When completed, the school will have a capacity of 1,500 students.

COST OF the addition is estimated at \$1,309,000. It is expected to be completed during the 1958-59 school year.

The board voted five to one to connect the sewer on the west side of the school with a 12-inch sewer with costs to be shared proportionately by Linden.

Alternative was to connect to the east directly into the existing 10-inch Wedgewood subdivision sewer with the school bearing the costs.

ALTHOUGH the sewer to connect on the west side of the school will be longer, the cost will be approximately the same as Linden would be paying a share for a proposed Hampshire Woods subdivision of 74 lots west of the school.

As planned, cost to the school district to bring the sewer to school property will be \$23,295. An additional \$700 is estimated to be needed to connect the main sewer to the school.

This plan was approved by Mark W. Gohline, Ernest J. Corderhill, Leiv Larson, Charles L. Curtis and Philip A. Maloney. Will J. Oliver voted for the east route with the school bearing the total cost of \$24,058. Fred D. Leonard, president, was on vacation.

### Thomas Jackson Family Has Addition

CANTERBURY GARDENS—A new arrival to the Thomas Jackson family of Avilla, Canterbury Gardens, is Richard Thomas, who weighed 6 lbs., 10 oz. at birth. Richard was born at Mt. Carmel hospital in Detroit Aug. 8. Other children in the family are Cynthia 4 and Susan 2.

### On Vacation

Marian Patrick, The Eccentric's Bloomfield West correspondent, is vacationing. Her column will appear again next week.

### Truck Terminal Hit by Vandals

BLOOMFIELD TWP.—Seven trucks were broken into during the week end at terminal lots at 1410 Franklin road in the northeast end of Bloomfield township.

Associated Truck Lines reported to police that five tractor trucks had been broken into by the vandals and had been stripped of safety equipment, including fire extinguishers, flares and flags. An alarm clock also was missing from one cab.

Two trucks at the adjacent Kramer Brothers Freight Lines terminal were entered and the safety equipment taken.

Township Police Chief Clark Green said the cost of safety equipment for each truck was estimated between \$45 and \$50.

### Visual Obstruction Of School Parking To Get Joint Study

LATHRUP—City officials will work with Lathrup PTA and Southfield school district officials in clearing up visual obstruction of motorists at the Lathrup school parking lot.

Signs there, erected by either the school PTA or Southfield schools, is blocking vision and Councilman David Anderson requested city officials to find out what could be done about them.

County road department has stated it would remove the signs upon the city's request because they (the county) did not put them up and the signs do not conform to State uniform highway devices.

### Council Awards \$2,100 Rubbish Pickup Contract

FRANKLIN—Among matters approved by Franklin's Village council Monday night were a \$2,100 one-year contract to Isaac Telford of Commerce for monthly rubbish collection in the village and a payment of \$222.65 to Southfield township as final settlement, to date, for tax claims.

The village had paid more than \$1,400 in May to Southfield for the tax debt to the township. The new sum was additional to that paid earlier.

A REQUEST for permission to open a tea room on commercially zoned property across from the community hall was referred to the planning commission for further study and recommendation. The request was made by Mrs. Richard K. Sterling of Birmingham and Mrs. Robert W. Richardson of Royal Oak.

The fact of street parking will have to be provided will be one of the matters the planning commission is to discuss concerning the two women's request.

### Buy Grace School Fire Alarm Horn

Southfield board of education approved purchase of a \$51 fire alarm horn to be installed in the boiler room of the Grace school to comply with state police inspection requirements.

The board also voted to sell Southfield school bus No. 3 for \$100. Glen Levey, assistant superintendent, pointed out that it has more than 200,000 miles.

### Good Deed Switched

LATHRUP—Mrs. Cameron J. Beck's request that a police officer be on duty each Monday afternoon to guide 250 girl scouts across Southfield road after scout meetings, was authorized by council Monday.

### Bad Check Artist In Trouble Again

SOUTHFIELD—Wilbert Groleau, 47, of Berkley, who spent 30 days recently in Oakland county jail for passing bad checks in Southfield, is being held in Saginaw on a similar charge.

Southfield police also want to talk to Groleau again about bad checks believed to be passed by

Groleau since his release from jail, according to Detective Charles Durbin.

Detroit, too, wants Groleau on a larceny by conversion charge. Detroit accuses the Berkley resident of driving off an auto sales agency car and not returning it, Durbin said.

### Boys' Bikes Stolen

BLOOMFIELD TWP.—J. Louis Saba, 7369 E. Greenwich, reported to township police Monday that two 24-inch boys' bicycles had been stolen from an open garage at his home Sunday night or early Monday. He valued the Schwinn bicycles, one of which was almost new, at \$152.

**Franklin**  
FRANKLIN OAKS · BINGHAM FARMS · WOODCREEK

### Franklin Social Briefs

A NEWCOMER to the Thomas Rex family of McKinley drive arrived Aug. 12. The baby, named Amy, is the third daughter and fifth child for the Rexes.

FORMER Franklinites, the Robert Baxleys have been visiting old friends and neighbors this week making the Harvey Green home

on Country Club drive in Bloomfield their headquarters.

FOR THE PAST ten days, Mrs. Joshua Miller of Tudor lane has been visiting her parents in Cleveland.

MR. AND MRS. Richard Flury spent last week in New York to be on hand for the arrival of their daughter, Beth and her husband Arvid Kallen, Jr., who are returning to the United States after a year in Germany where Kallen was stationed with the armed forces.

A TOUR of Quebec and side-trips to the many shrines in the province afforded a week's holiday fare for the E. C. Doberstyn family of Greenbrier who returned last week. They enjoyed visiting Montreal and came back through New York.

THE READER gets only a thin dime's worth this week because the Hard family, minus one, took off for Chicago, Milwaukee and a revisit to Leland.

Want ads cannot be accepted after 5 p.m., each Tuesday.

## FAMILY LIVING!



This is a home designed for family living. It has lovely large pleasant rooms and is arranged for the comfort and convenience of a happy group.

- Living room 15 x 26 with fireplace; Library 12 x 17.
- Dining room 15 x 16; Screened Porch 9 x 15.
- Superb Kitchen—newly remodeled—Counter-top range; Wall ovens; Dishwasher; Disposal; formica counters; many cupboards—plus a large breakfast area.
- 5 large Bedrooms, 2 1/2 baths. (Master bedroom is 15 x 26).
- Full basement with new furnace; 2-car attached garage.

Set on a corner with mature trees, in a very pleasant tree-lined neighborhood, this substantial home has everything to offer and can be purchased at a very reasonable price. Call us for an appointment. You will like this home.

**SNYDER KINNEY & BENNETT**  
INC.  
239 S. WOODWARD MI 4-7000  
Realtors

**Janis & Stier**  
**BILLBOARD**

I reckon we ought to discuss our hours . . . as you requested.

We ain't open much hours . . . just from 8 AM to 4:30 PM every day except SATURDAY. Of course we go to church on Sunday . . . Now, we know this ain't too convenient . . . but, dang it all we like these hours. Soooo . . . let's compromise.

Suppose we start deliverin' in our bright purdy RED TRUCKS . . . providin' you order snuf to deliver.

Now . . . as you probably know . . . we jus sell LUMBER on stuff like that . . . all kinds of lumber . . . you know . . . like wood . . . paneling . . . plywood . . . doors . . . and all that stuff. Sooooo, if you can't git in while we're open . . . give us a call and we'll git it delivered jus as quick as possible.

Oh, incidentally, we sure are loaded with plywood paneling . . . sure you don't need some . . . QUICK?

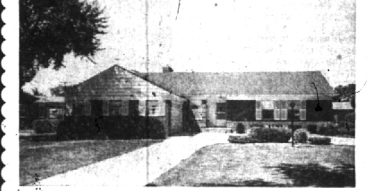
P.S. Jus se's you'll know where we're at—our place is five blocks south of the Grand Trunk Depot. Now you know.

**Janis & Stier, INC.**  
653 S. ETON · BIRMINGHAM  
CALL MI. 6-5555 · NOW

# BROOK DEPENDABILITY

MORE PEOPLE DEPEND ON BROOK FOR THE BEST IN REAL ESTATE SERVICE. THEY TAKE ADVANTAGE OF 62 YEARS' EXPERIENCE AND THE EXPERTLY-TRAINED, FULL-TIME STAFF WHO CAREFULLY EXAMINE EACH HOME LISTED TO SEE THAT IT IS "WARRANTED VALUE".

### Close to School



Executive owner of nearly new one-floor Colonial has been transferred out of city, making it available for you. Short walk to new Midvale School and the High School. Exceptionally well-built with lots of room. 3 Bedrooms, with 2 ceramic tile Baths and a 12x14 wood-paneled library. It has full Basement and the Kitchen is delightfully modern with built-in Thermador range and oven. Beautifully landscaped. Low taxes and heat cost make maintenance economical. Move in right away.

WARRANTED VALUE AT \$38,950

### Walk to Quartan School



Simple elegance is reflected in this commodious Farm Colonial and it's nearly new. The owner's transferred out of town and you can move in plenty of time for school. New wall carpeting and drapes in the Living Room and Dining Room. Slate entrance Hall. The site is just large enough and has beautiful trees. 4 roomy Bedrooms and 2 ceramic tile Baths on the upper level. Very large Living Room, and Dining Room and good-sized Activities Room on the 1st floor. Kitchen has superb knotty-pine cabinets. Altogether, it's an exceptional opportunity to live in one of our finest homes.

WARRANTED VALUE AT \$48,900

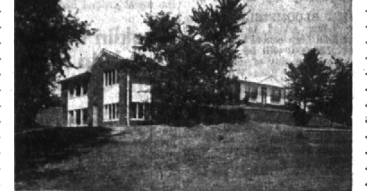
### Near Birmingham Country Club



Here's a modified Cape Cod that's sparkling bright; Less than 5 years old, it has 3 good-sized Bedrooms, large Living Room with separate Dining Room and a cool 15 x 11 Porch that has both screens and glass. Everything's ready for you, including carpeting and draperies. The home has been beautifully maintained and it's only one block from Birmingham Country Club.

WARRANTED VALUE AT \$28,900

### Bi-Level Ranch Home



You don't have to look in the magazine for your "Dream Home". Just call for an appointment to see this magnificent 2 level modern with marvelous accommodations. Finely detailed, it features include 3 wood-burning fireplaces, Brick Bar-B-Q, 3-zone heating system, Thermopane Windows, and efficient Kitchen with complete built-in equipment. You can enter the lower level directly from the gardens. Carpeting and draperies are new and of high quality. Here is your chance to own the finest. Let's look at it!

YOU CAN RELY ON  
Birmingham's Senior Realtors  
**MAX BROOK INC.**  
MI 4-6700

# WE HAVE MORE TO OFFER

. . . than what you see here. However, in this cross section of our current listings you can probably find the answer to your housing problems and needs, whatever they are.

WHERE	STYLE	BDRMS.	BATHS	HEAT	GARAGE	PRICE	WHERE	STYLE	BDRMS.	BATHS	HEAT	GARAGE	PRICE
Amherst	Ranch	3	1	Oil-Rad.	2 car	\$33,000	E. Lincoln	2 story	5	2 1/2	Gas-steam	3 det.	\$19,500
Argonne	Ranch	3	1	Oil	2 1/2 att.	\$34,200	W. Lincoln	Contem. ranch	3	2 1/2	Oil	2 att.	\$59,500
Chestnut Hill	Ranch	3	1	Oil-Rad.	2 car	\$30,900	Littlelet	Contemporary	3	1 1/2	Gas-Rad.	carport	\$21,750
Christian Hills	Ranch	4	1 1/2	Oil	2 1/2 att.	\$27,200	W. Maple	Colonial	2	2	Oil	2 att.	\$34,900
Cromwell	Ranch	3	1 1/2	Oil	2 1/2 att.	\$31,500	Melton	Ranch	3	1 1/2	Gas	1 att.	\$22,750
Elizabeth	Ranch	3	1	Oil-Rad.	2 att.	\$24,800	Northlawn	Ranch	2	1	Oil	1 car	\$23,500
Fairway Dr.	Ranch	3	1	Oil-Rad.	1 1/2 att.	\$16,800	Nottingham	Ranch	4	3	Oil	3 car	\$52,500
W. Fourteen	Ranch	3	1	Gas-Rad.	1 1/2 det.	\$17,500	Shagbark	Ranch	2	1	Gas	1 1/2 det.	\$17,900
Hazel	Ranch	2	1	Gas	No	\$9,500	Springbrook	Ranch	3	1 1/2	Oil	2 att.	\$26,900
Kingsmere Cir.	Tri-level	3	1	Oil	2 att.	\$32,500	Wellesley	Colonial	4	2 1/2	Gas	2 att.	\$42,500
Kirkshire	Ranch	3	1	Oil	1 1/2 det.	\$22,900	Wing Lake Rd.	Ranch	3	1 1/2	Oil	2 att.	\$39,900
Lake Park	Colonial	4	2 1/2	Gas	2 car	\$54,500							

**Johnstone**  
REALTORS  
● W. CRANBROOK AT MAPLE  
MI 7-0200