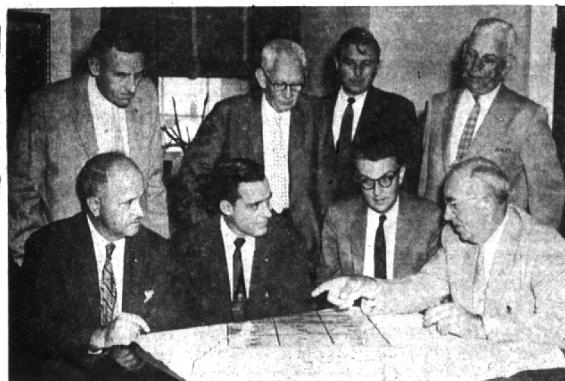


who have been inhabitants, or now are, of this earth, really acquire enough knowledge to show a high appreciation of and participation in the best things and thoughts of life? So many of us fail to get ourselves very far from lesser views and visions.



Request Flood Survey

Steps to speed a flood survey of a bottleneck in the Clinton river were sought at Washington last week by Oakland county's storm water officials. County officials fear that rapid population growth in Oakland and Macomb counties will lead to serious flooding on a 5.5-mile stretch of Clinton river in Macomb. Clinton river is the storm water outlet for the proposed 12-Towns drain and most other drainage systems in eastern Oakland county. The survey, approved by the House Public Works committee, will determine whether Oakland county's storm

water outlet to the Great Lakes is adequate. Front row: (left to right) are George W. Reschke, Detroit district corps of engineers; Congressman William S. Broomfield (R-Royal Oak); Congressman Robert J. McIntosh (R-Port Huron); Macomb Drain Commissioner Frank E. Lohr; (back row) Henry C. Weinkauff, chief of engineers office 12-Towns Co-ordinator Ashton J. Berst; Oakland Drain Commissioner Daniel W. Barry; and Macomb Deputy Commissioner Arnold F. Rockensuess.



'Rags to Riches' Winner

One of the leading eligibles in the Detroit Race Course's Bull Dog Stakes on Saturday is Shan Pac, owned by T. A. Grissom, 18191 Redwood, Lathrup Village. Here the horae is shown after winning the \$10,000 Juvenile Championship in Hazel Park last year. Shan Pac, still nervous from the race, shakes up a couple of its handlers as tired jockey Larry Gilligan of Chicago poses for the shot.

23 Service Stations in Birmingham Initiate Hubcap Engraving Program

Twenty-three Birmingham service stations have opened a police-sponsored campaign to knock the bottom out of the city's hubcap thefts.

Engraving machines were distributed last Thursday to the 23 stations by Detective Sgt. Robert Schaulé of the Birmingham police department, the department's juvenile officer.

Friday these stations began engraving license numbers of their customers on their hubcaps. The service is free to all requesting it.

EVEN if the numbers are ground off, they can be restored with acid and heat, and Sgt. Schaulé says the juvenile crime rate has noticeably dropped in cities where this method has been tried.

Birmingham recorded 82 hubcap thefts through the middle of July.

Birmingham is believed to be the first midwestern city to initiate this program.

The complete list of service stations participating in the program:

Bob Adams Shell, Maple and Hunter; Joe Pinter Standard, Quanton and Woodward; Joe Virgilio Triangle service, Adams and Woodward; Lewis Renwick Pure Oil, 1000 E. Maple; Charles Renwick Texaco, 985 E. Maple; Dick Wortley Super service, Hunter and Maple.

ALSO John Heller Eton Shell, Eton and Fourteen Mile; Bill and Micks Pure Oil, Fourteen Mile and Pierce; Bill Monahan Standard, Fourteen Mile and Southfield; Ken Ureel Standard, Southfield and Maple; Hittler's service, 1712 W. Maple; Murphy Standard, Harmon and Woodward; Hunter Boulevard service, Hunter and Hamilton; Tom Kaiser Standard, Fourteen Mile and Woodward.

Also Al Lalla Mobilgas, Fourteen Mile and Woodward; James

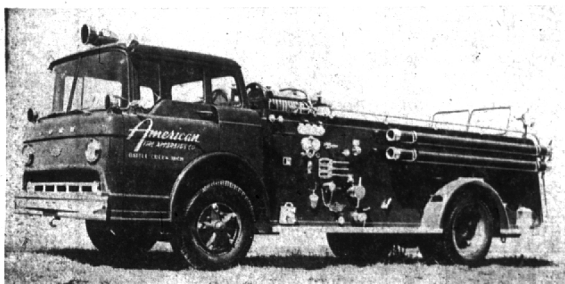


To Cut Thefts

Engraving of license numbers of hubcaps in Birmingham has begun in an effort by police to cut juvenile crime locally.

S. Cavender Marathon, 1275 S. Woodward; J. J. Levy Oakland County Gas and Oil Co., 1280 S. Woodward; Mcker and Larsen Mobilgas, Lincoln and Woodward; Tom Rinke Marathon, Maple and Hunter; Socooy Mobile Friendly service, 910 N. Woodward; George Landino Speedway 73, Chapin and Woodward; and Kurth and Howenstein General Auto service, Forest and Woodward.

PECK'S
Cleaning and Pressing
Cash and Carry
Plain Dresses—Suits—\$170
Topcoats
108 So. Woodward Ave.
for delivery service...
PHONE MI 4-7724



Franklinites Will See This in October

Franklin Volunteer Fire Department's new truck, when it is returned from Rat-tel Creek in October, will look like this. The 500-gallon pumper, which will cost about \$18,000, will be fitted with a 750 gallon per minute multi-stage pump, 1,200 feet of 2 1/2-inch hose, 800 feet of 1 1/2-inch hose

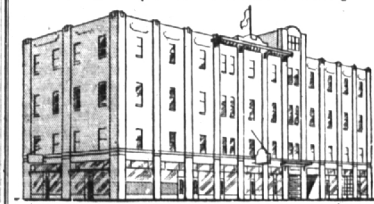
and two reels of 1-inch hose plus a three-way radio with a built-in public address system. A wet water proportioner increases effectiveness of spray 9 to 1. An automatic transmission is the first on a Ford-built fire truck.



Local Shriners in Miami Beach

Approximately 200 members of Moslem Temple, Detroit Shrine Club, together with their wives are vacationing at the new American hotel in Miami Beach. Among the group are; (from left) Mr. and Mrs.

Victor A. Brain, 1044 N. Glenhurst; Dr. and Mrs. Russell Wright, 1433 Lockridge Rd., Bloomfield Hills and Mr. and Mrs. Frank J. Howlett, 1160 Hillside Dr., Birmingham.



You'll be pleased with the service at
BIRMINGHAM'S SENIOR REALTORS
MAX BROOCK INC.
MI 4-6700

PHONE MIDWEST 4-4300
For Convenient
MOVING AND STORAGE BY
GAUKLER'S
AGENT FOR ALLIED VAN LINES
BIRMINGHAM OFFICE
139 West Maple Ave. in the Field Building

BEAUTIFUL FORMICA DINETTES

AVAILABLE IN BLACK WROUGHT IRON AND CHROME

MADE TO ORDER



ANY Shape Style \$59.95 and up

Lifetime Guarantee On All Chrome

26 Styles — 26 Colors — All Stores



ROOM DIVIDERS MADE TO ORDER

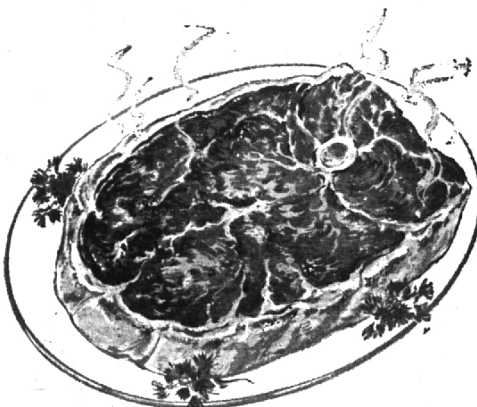
Open Daily 10-8:30

Beautiful FORMICA BUFFETS Made To Order

METALMASTERS MFG. CO.

4600 N. WOODWARD, Near 14-Mile Road

Liberty 9-3011



What Makes A Really Good Steak?

First, the steer. The steaks you'll find at Peabody's come from prime cattle.

Second, careful grading. The steaks from Peabody's are cut from beef that has been labeled "Prime", assurance that the "raw material" is the finest that can be obtained.

Done? Not yet. We're only half way to a really good steak. Third, it takes careful aging. It is this aging process, precisely executed under carefully controlled conditions of temperature and humidity, which imparts to beef its full measure of good flavor and tenderness. Peabody's carries the finest prime aged beef.

Cutting and trimming is our personal contribution and pride. Custom cutting gives you the steak the way you like it, 4" thick or sandwich thin. All gristle and excess fat is cut away. We leave only enough of the pure white fat to keep that steak juicy and tender.

Last of all, Peabody's steaks are always fresh and displayed unwrapped for your personal choice. From steer to broiler you get the finest steaks possible custom cut for you at Peabody's—Shop there.

PEABODY'S SUPER MARKET

154 Hunter at Maple Birmingham MI 4-5222

Open every evening except Saturday
Sunday Hours: 10 a.m. to 8 p.m.

Free Parking, Front and Rear of Store