

among the most wanted sports jackets fabrics. These new fall cottons are heavier in weight than their summer cousins and darker in tone. Other favorites include corduroys and silk - and - wool blends. The corduroys, incidentally, can be had as sport coats, slacks, or in complete country suits.



Co-Ed's choice for classroom smartness is this slim sheath and subtly striped jacket in heather tones.

Sportsminded People Feel Ivy Influence

With millions and millions of Americans annually flocking to stadia big and small, it's no wonder that we have been characterized as a "sports-minded" people.

Nor is it any wonder that this most sports-minded people of all has made the sports jacket-and-slacks outfit a virtual symbol of the American male at his leisure. After all, how can the man in the stands be more correctly dressed than in a handsome, casual sports outfit, which has become as much a part of the autumn scene as the refreshing fragrance of burning leaves.

THE MAN IN the stands this fall at Saturday games or the annual clash between Fall Rock State Teachers College or good 'Ol Confusion Normal U. can take his seat on the 50-yard line with the feeling of well-being that comes from expressing his individuality in his choice of the classic sports jacket-and-slacks outfit. Dressed right in this way, he knows that he fits in and can relax and enjoy the game.

These spectator specials for Fall, 1957, show a marked "Ivy" influence but are cut along more modified lines designed to give

even the alumnus of more mature proportions greater comfort as well as the slim look of most undergrads.

SLACK STYLES have also been modified. Although unpleated plain-front belted-back slacks are increasing in popularity, the pleated styles in both regular waistband and self-supporting models will be more widely worn.

The three-button sport coat has become the national favorite and is the choice of about two-thirds of the sport jacket fans. The new coats are made with narrow lapels, flap pockets and center vents. Authentic Ivy models are tailored with raised seams and are sometimes worn in four-button models. Traditional patterns such as herringbone weaves, diagonals, stripes, checks and plaids are tops this season.

TWEEDS, SHETLANDS, chevils, flannels, cashmeres and a newcomer for fall—cottons, are

Shorter Topcoats Extend Freedom, Reduce Bulkiness

Comes autumn and the days grow noticeably shorter. This year topcoats will, too, with many of the new season's coats having been reduced from one to four inches and some of the casual coats even more.

This shorter coat is a boon to the active American male.

For one thing, it helps to give a fellow a taller appearance. But, in addition, it allows greater freedom of stride, it is less cumbersome and, frankly, it eliminates excess weight and bulkiness in the area where it does the least good.

MEN WITH AN eye for functional fashions have already taken to the new shorter models in a big way. In line with the trend to more natural lines, they follow the new trimmer silhouette for male apparel and they are certainly an improvement when a man gets behind the wheel of his car.

The shorter coats are available in a wide assortment of fabrics and models. They are made in single-breasted box models with full-cut easy-hanging lines as well as in more fitted single-breasted semi-chesterfield styles. The latter are usually made with fly-front and, in the natural shoulder models, are great favorites with the Ivy fans.

LEADING MEN'S WEAR stores note a revival of interest in the camel colored polo coat. This handsome double-breasted model is practically a must in any well stocked wardrobe and is great for casual and country wear.

Among the favored topcoat fabrics for Fall, 1957 are "polished tweeds" made of a blend of silk and wool, featherweight brushed wools, heavier weight brushed tweeds, sturdy covert cloths, and the always popular rugged tweeds, chevils, gabardines and meltons.

Tweed balmacaans with raglan shoulders are still among the most wanted coats.

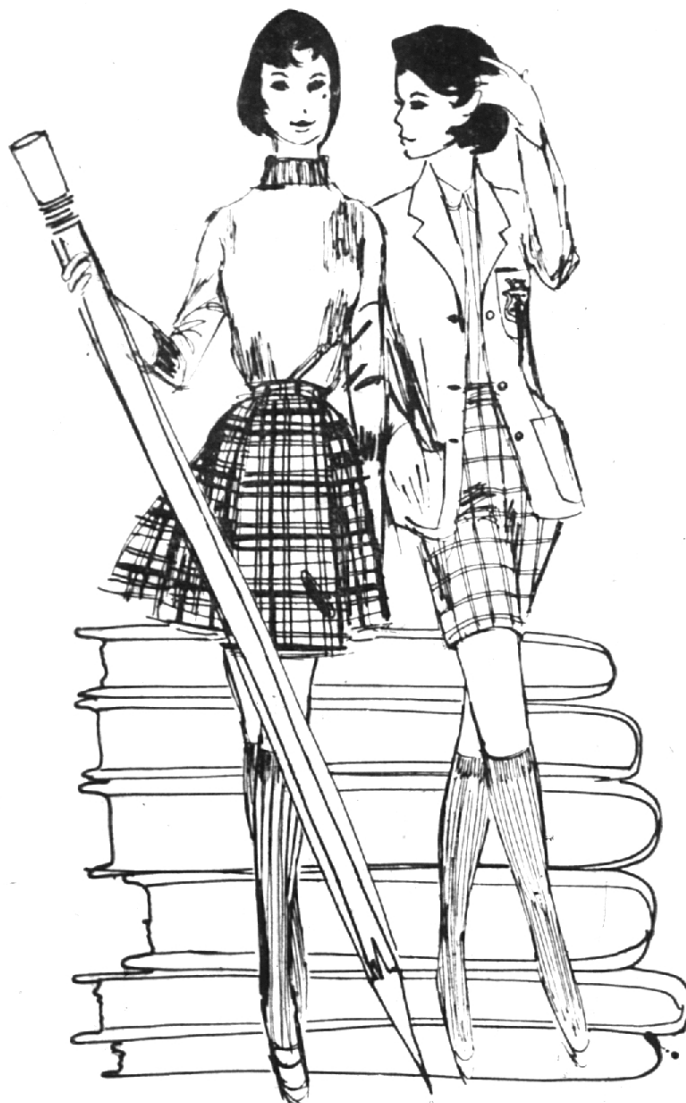
ALTHOUGH MANY men prefer the lightweight coats for year-round wear, the past two severe winters have created a demand for some medium and heavy weights. Of course, topcoats with zip-in liners are a practical solution to the need for extra warmth in some areas. However, in others a full weight overcoat is the only answer.



BACK-TO-SCHOOL — WE'RE GOING BACK TO SCHOOL!

BACK-TO-SCHOOL — WE'RE GOING BACK TO SCHOOL!

BACK-TO-SCHOOL — WE'RE GOING BACK TO SCHOOL!



BACK-TO-SCHOOL — WE'RE GOING BACK TO SCHOOL!

Designed for
COLLEGE STUDENTS

Wherever you are, at home or away, Personal Property Insurance protects your valuable possessions.

Consult:
DON NOLTA

E. W. KURTH

290 S. Woodward, Birmingham

MI 4-7721

WALTON-PIERCE
grosse pointe e. hercheval, st. louis

BACK-TO-SCHOOL — WE'RE GOING BACK TO SCHOOL!