

# 'Dress Up' Is Trend In Selecting Attire

Fashions for the campus this fall set new highs in the dress-up trend with the "Ivy" influence predominant in all phases of the college man's wardrobe.

In suits, the slim "Ivy" models with minimum shoulder padding, three-button fronts, flapped pockets and center vent in back command high favor because they are so flattering to the average young man's build.

AT THE same time, the collegian can find broad scope for the expression of his individuality in the wide array of fabrics, patterns and colors from which he may choose.

Glen plaid, smooth-faced wool worsteds and striped wool flannels feature neat, muted colorings. Dark gray and medium gray line up together in narrow hairline stripes to become the most popular two-tone combination for important campus occasions.

Other striking striped combinations are fine red stripes on black, navy on gray, tan on gray. Also favored are chalk stripes in soft wool flannels, with white or tan against gray and light blue on navy.

When he turns his attention to the important subject of sport coats, the college man will find the trend to fitness in coats for year-round wear reaching its peak, this fall.

AMONG the styles that will vie for his favor are heather tweed wool shetlands that impart a genuine casual "soft" look in gray and olive tones; the popular houndstooth pattern in a white, gray and olive mixture; and gray, olive and red stripe combinations.

Typically campus in styling is the raglan sleeve Donegal wool

tweed topcoat with slashed pockets, bold leather buttons and tabs on sleeves.

This year, too, the wool fleece camel polo coat is staging a comeback in a new slimmed down model with belted back and double-breasted front.

FOR LESS formal occasions, the college man will need an outer jacket with toggle front.

The new "car coats" are styled for driving, have deep and roomy patch pockets and collars that convert into hoods. They are also just the thing to ward off the chill on dashes between class buildings.

Two or three pairs of slacks are a "must" in the back-to-college wardrobe. Gray is first choice, but brown adds variety.

The new slacks are trim and tapered, plentless, and sport a back strap with buckle.

EQUALLY essential are sweaters, at least one of which should be a bulky knit.

Fall styles point to bold stripes, high shawl-collared coats and panel-patterned fronts along with the classic crew neck in authentic shetlands.

### For Correct Fit

Children should be measured for shoe size, standing up, as clerks in reliable stores will tell you.



## The Backward Look

The Shetland cardigan is knitted of pure wool in Scotland. Here the cardigan is shown buttoned down the back which is a way many of the college girls will wear the style. The front (which is really the back) will be monogrammed with their initials.



### Crew Neck

Soft touch for collegians is provided by this comfortable sweater of "Orlon" and lamb's wool featuring a crew neck with contrasting trim.

### 'Ivy' Influence Gains in Shirts

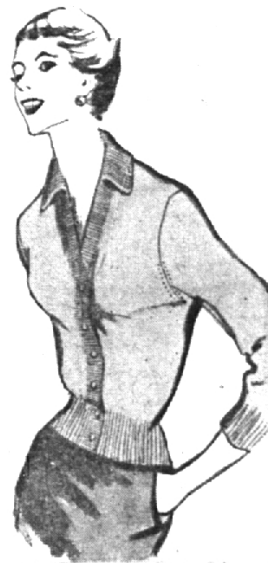
Dress shirts will have a casual look; many will be decorated with small checks, stripes and tartans. "Ivy" influence will be evident in button-down and button-back collars. White will be, as always, the leading color, with blue gaining ground.

In sport shirts, the chief color will be red and the major style influence will again be "Ivy." Polished cottons and glazed models (chiefly in silk-and-cotton blends) will be seen in increasing numbers, along with the standard cotton printed flannel.

*Suzette*

Created for the Campus

These DREAMSPUN feel everyone—they look so much like cashmere. They're so soft, so light, so exquisite of texture. Best of all, they're inexpensive for so much luxury. You'll want more than one of these freshly styled fall-fashioned sweaters by Garland in a bouquet of colors. Sizes 14-16. Cardigan \$13.99 up. Pullover \$4.98 up.



**DREAMSPUN**

SWEATERS BY *Garland*

*Suzette*

241 PIERCE ST., BIRMINGHAM  
OPEN FRIDAY EVENINGS 'TIL 9

USE YOUR  
CHARGE ACCOUNT

fine shoes for school



Active young feet in school or at play need the sturdy construction of American Juniors. Mom, outfit them in shoes that rate A PLUS in STYLE... VALUE... and FIT.



4.95

5.95

6.95



*Miller's SHOES*

100 N. Woodward

MI 4-4024