

Patten Company Adds Two Accounts

Patten Company of Birmingham, Michigan, has added Dishmaster Corporation, Pontiac, Michigan, and Ironrite Sales & Service, Detroit, Michigan, to the list of Pat-

The Patten agency will also handle merchandising and public relations for this client.

The first recorded natural gas well was drilled at Fredonia, N. Y., in 1821.

BUSINESS BRIEFS

Widely Acclaimed Pianist-Composer To Reside Here

Severin Turel, a pianist-composer whose "Polish Rhapsody" was written in a German concentration camp, is moving to Birmingham in order to work on future compositions and to enlarge his repertoire.

His rhapsody is considered one of the foremost patriotic works of the century. Together with "Twelve Sketches" and "Spanish Caprice" it was received with ovations in over 100 coast to coast concerts which he performed last year.

Turel is presently instructing piano at the Oxford Academy of Music in Birmingham.



SEVERIN TUREL

Birmingham Center Wins Two Awards

Unites Products of the Birmingham Junior Achievement center took a first place in the miscellaneous category in the recent JA annual industry awards contest.

The group made first aid kits and desk pads and is sponsored by Cogswill Twist Drill company.

The Hi-Stylers company, also of Birmingham center, took a third place in the decorations category for their styrofoam Christmas products. Their sponsor is Mac-Manus, John and Adams, Inc.

Each of the S. E. Michigan award-winning entries will compete in the National industry award contest to be held at the national JA headquarters in New York City.



RAYMOND T. SIFFERMANN

Appoint Regional Service Manager

Appointment of Raymond T. Siffermann, 1902, Marguerite, Birmingham, as regional service manager of the Burroughs Corporation Great Lakes region, embracing 29 branch offices in seven states, is announced by C. A. Baker, general service manager of the Burroughs Division.

A native of Chicago who joined Burroughs there as a service representative in August 1935, he succeeds E. R. Smith, who died recently.

Siffermann served as service representative at Chicago and Milwaukee and in various supervisory capacities at the home office in Detroit, including his most recent assignment as coordinator of service training. From March 1952 until May 1954 he was assistant to the general sales manager, and acting manager of the Boston branch of Mittag & Volger, a Burroughs subsidiary.

Chemical Company Takes Engineer

Fred H. Edgar, 1050 Brookhaven court, Birmingham has joined Olin Mathliessen Chemical Corporation as sales manager, Detroit-Cleveland Division for Olin Aluminum. It was announced by R. Carter Dye, Aluminum Division sales manager. He will be headquartered in Detroit, Mich.

Edgar was regional sales manager, Industrial parts division for Reynolds Metals Company in Detroit, Mich., from July 1954 thru February 1957. He served in that same capacity in Camden, N. J.

The "SURE GRIP" BATHTUB SEAT



OFFERS SAFETY FOR—

- BATHING CHILDREN
- THE SHOWER AND SHAMPOO
- SHAKING FEET AND LEGS
- EXPECTANT MOTHERS
- INVALIDS & ELDERLY PEOPLE

Only \$195
MICHIGAN FIRST AID
1621 S. Woodward, Royal Oak
(3 Doors North of 10 Mile)

Garden 'Twilight'

Prior to joining Reynolds, he was vice president and general manager of Diamond Metal Products Company in Blairsville, Pa., and was with the Aluminum Company of America in New Kensington, Pa., in various sales and engineering capacities from 1930 to 1946.

With a contemporary garden arrangement named "Twilight," Walter W. Morris, owner of a landscaping business at 4819 Rochester road, Birmingham, took a first prize in a Flower Home and Garden show held at the State Fair grounds recently.

CHET SAMPSON

is now accepting applications for his 1957 WESTERN TOURS July 27 - Aug. 31 Price: \$385.00 One Section for Boys—One for Girls

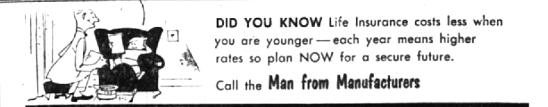
This tour covers 14 states and 9 national parks: Yosemite, Yellowstone, Tetons, Bryce, Zion, Grand Canyon, Wind Cave, Mesa Verde, and Rocky Mountain National Parks; Hollywood, San Francisco, Salt Lake City and Lake, Las Vegas, Hoover Dam, Black Hills, Mt. Rushmore, Badlands, Petrified Forest, Laguna Beach, Colorado Springs, and many more.

Applications and Information Available At
Chet Sampson Travel Service
100 Kercheval, Grasse Pointe 36 TUXEDO 5-7510

Magnavox
high-fidelity television • radio-phonographs

McCullum and Dean

409-411 E. Maple Midwest 4-5230



DID YOU KNOW Life Insurance costs less when you are younger—each year means higher rates so plan NOW for a secure future.

Call the Man from Manufacturers

THE MANUFACTURERS LIFE INSURANCE COMPANY

BRANCH OFFICES

1890 Penobscot Bldg., Detroit 26 W. M. Milligan, C.L.U., Branch Mgr. Phone: WO 1-3191
2842 W. Grand Blvd., Detroit 2 Richard W. Schmid, C.L.U., Branch Mgr. Phone: TR 5-3230
Birmingham Representative: David K. Falvey, C.L.U.

Booklets - . . . ?
YES . . . WE PRINT HUNDREDS OF BOOKLETS—EITHER LETTERPRESS OR OFFSET

Three Detroit Salesmen . . . TR 5-2629 . . . Plant MI 6-2000

The AVERILL PRESS INC. of Birmingham
A COMPLETE PRINTING SERVICE—FROM TYPESETTING TO MAILING

FORMERLY THE BIRMINGHAM ECCENTRIC PRINTING DEPARTMENT

BIRMINGHAM CUSTOM UPHOLSTERING CO.

Announces a New Decorative Service

A call to Midwest 6-7868 will bring a stylist and color consultant to your home with our exclusive selection of decorative fabrics which we carry currently in stock. Our facilities include complete reupholstery, restyling and refinishing.

Join the thousands of Thrifty Families who Save Regularly at CAPITOL SAVINGS & LOAN ASSOCIATION

CURRENT RATE **3 1/2 TO 4%**

REGULAR SEMI-ANNUAL EARNINGS PAID SINCE 1890

OPEN ACCOUNTS FOR YOUR CHILDREN TODAY
FREE LANTERN BANK
With Each New Account of \$5.00 or More



27215 SOUTHFIELD near 11-MILE ROAD • Phone EL. 6-7770
MAILING ADDRESS: LATHROP VILLAGE, MICHIGAN

DOWNTOWN OFFICE WASH. BLVD. BLDG., PHONE WO. 2-1078
Open Daily 9 'til 4:30
Fri. 9 'til 6:00 • Wed. & Sat. 9 'til 12:00
Ask About Our "Save-by-Mail" Service
PONTIAC OFFICE 75 WEST HURON PHONE PE. 4-8561



COLD BATHS are for the **BIRDS...** you can rely on a



WATER HEATER for a HOT ONE!

Whether your hot water needs are large or small, you can depend on Rheem... the BIG name in water heaters.

BIRD & GRIFFITH
259 E. Maple MI 4-3832

BIRMINGHAM BLUE PRINT AND SUPPLY COMPANY

W. S. McALPINE, PROP.
• Blue Prints • White Prints
• Photostats • Transparents
QUICK SERVICE While You Wait Ph. MI 4-3738
WE AIM TO PLEASE
636 S. Woodward
Open Weekdays & Saturdays A.M.



Easter Flowers

- Corsages
- Plants
- Table Arrangements

Floral arrangements under supervision of Mr. Herbert Spencer, formerly head designer for Breitmeyer's

- Visit our NEW and CONVENIENT location
- Or call for free delivery

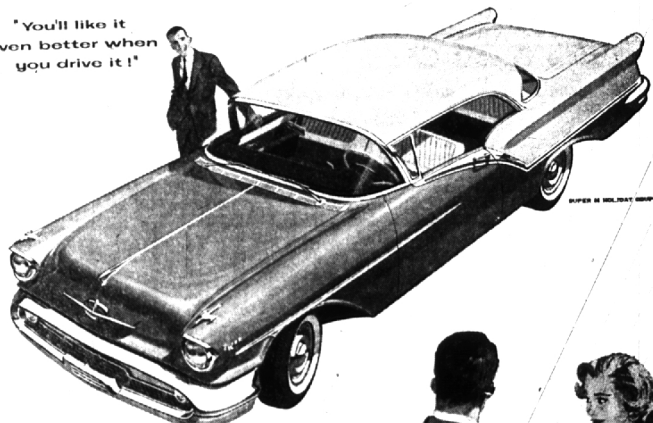
John Moss Florist
243 W. Maple

(next to Kresge's)

OLDSMOBILE

GEARED TO MIDWESTERN LIVING

'You'll like it even better when you drive it!'



Neighbor: Say, your new Olds sure looks like a lot of car!
Olds Owner: That's nothing, wait'll you take a ride.
(A few minutes later:)

Neighbor: Man-oh-man, where'd all that power come from? I've never felt anything like that before!
Olds Owner: That's Oldsmobile's new J-2 Rocket Engine!
Neighbor: What's that? Tell me how it works.
Olds Owner: When you're driving under ordinary conditions, it uses only one carburetor. That means economy with a capital E. But when you need a sudden burst of power, for safety's sake, you just press the accelerator three-quarters of the way down—and no additional carburetors cut in!
Neighbor: In other words, with J-2, you can have economy when you want it and power when you need it. That's for me!
Olds Owner: Better see your Olds dealer. He's expecting you!



SEE YOUR AUTHORIZED OLDSMOBILE QUALITY DEALER