

WHY?



Water Safety Course Started By Red Cross

For the first time in two years, the Oakland county Red Cross chapter is sponsoring a preliminary course in water safety. It began last week at Lincoln high school, West Nine mile and Livernois, Ferndale, and will continue each Thursday through May 23.

Open to anyone holding a senior life-saving certificate, the course is a requirement for entry in the water safety instructor's training class to be given from 7 to 10 p.m. every night from June 3 through June 7 at the same place.

Prentice Mark Smith of Birmingham, chairman of water safety for the Red Cross Oakland county chapter, stated, "The people of Oakland county owe it to themselves and to their community to do their share to help water proof Oakland county."

Do We Have The Washington Monument?

When civilian contractors, working intermittently between 1848 and 1877 at raising the monument to Washington in the nation's capital, got stuck at a height of 152 feet, society dedicated to completing the work got Congress to call in Army Engineers. In four years the Army raised the structure to 555 feet, 5 feet and 1/4 inches.

Be the kind of driver you expect the other fellow to be—DRIVE SAFELY.

Since this was before the heyday of military public relations, the Army seldom given credit for this achievement—the monument for its fractional height.



Says the Barrister

You live near a justice of the peace and know that he dishes out traffic fines but you aren't sure of his other duties.

In every place where people live they have to have someone to settle the neighborhood squabbles, quiet the barking dogs, restrain mischievous children, and to punish those guilty of petty offenses and misdemeanors.

Our larger courts—or courts of record as they are called—could not handle their more important business if their dockets were cluttered up with small suits, traffic offenders, etc. In the cities these matters are handled by municipal courts or special justice courts but in the villages and rural areas and many suburbs the justice of the peace does the work.

THE JUSTICE of the peace is a township officer—and must be a resident of the township. The office was established by the constitution and each justice is an elected official and must run for office every four years. There are no educational qualifications for this job—however, a justice handles the public funds and must be able to post bond before he can be sworn in. There can be as many as four justices in each township.

In civil matters this neighborhood judge has exclusive jurisdiction of matters valued at \$100 or less. This means that he is the only court where you may start your suit. For all matters up to \$300 and certain cases up to \$500 he has concurrent jurisdiction. In other words, you may start with him or with a higher court. However, he cannot hear real estate title disputes, libel, slander, or false arrest suits.

THE JUSTICE of the peace also has power to hear crimes and misdemeanors punishable by a fine not to exceed \$100 or by imprisonment in the county jail for not more than 3 months—or both. For example, traffic violations, disturbing the peace, loitering and so on.

Of course, an accused has a right of trial by jury—a special justice court jury of six.

The justice does many other things such as arraign criminals, perform marriages, hear small claims against the school board and charges for overloaded trucks. All matters may be appealed to the next higher court.

He is an important man in your community. You elect him to keep the peace and settle problems close at hand. He can send a man to jail or levy a stiff fine. He should be chosen wisely.

DECORATING INTERIOR - EXTERIOR FRANK MATHIESEN PR 8-4931 Work Guaranteed and Insured

Bloomfield PTA Sets Square Dance

BLOOMFIELD — The Bloomfield Hills high school PTO is sponsoring a square dance on Saturday, April 13 at the high school gymnasium. Art Carby will be the caller and dancing will begin at 8 p.m. after which light refreshments will be served.

Tickets are available at Reeve's service station at \$2.50 per person. There are special tickets available for high school students at \$1.25 per person.

ALBERT HAIR STYLIST

2507 W. Maple at Cranbrook Five Parking

For Up-to-Date ...

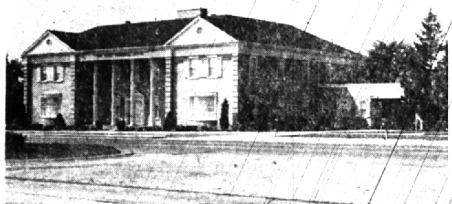
- hair styling
- coloring
- hair shaping
- permanent waving

Call: MI 7-0089



All Work UNDER THE SUPERVISION OF **MR. ALBERT** Expert Operators to Serve You OPEN MONDAYS

Dedicated to Service



Each member of our organization is a part of a closely knit group that functions efficiently and promptly.

This blending of interest and skill assures you that every need will be met.

Wm. Vase Funeral Home
4375 NORTH WOODWARD AVE. • ROYAL OAK, MICHIGAN
BETWEEN THE THIRTEEN AND FOURTEEN MILE ROADS
DIRECTORS: WILLIAM V. VASE AND EDWARD W. LYNN

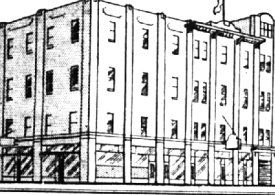
The Birmingham Hardware OPEN SUNDAYS

10 A.M. to 2 P.M.

152 North Woodward MI 4-7524 TOM CUMMINGS

PHONE MIDWEST 4-4300

For Convenient MOVING AND STORAGE BY **GAUKLER'S** AGENT FOR ALLIED VAN LINES BIRMINGHAM OFFICE 139 West Maple Ave. in the Field Building



MANUFACTURERS NATIONAL BANK

DETROIT, MICHIGAN

AT THE CLOSE OF BUSINESS MARCH 29, 1957

RESOURCES	
Cash and Due from Banks.....	\$169,869,513.40
United States Government Securities.....	231,202,931.96
Public Housing Authority Bonds.....	\$401,072,445.36
(Agency of U. S. Government)	17,674,775.52
State and Municipal Securities.....	21,354,554.70
Other Securities.....	10,705,967.40
Loans and Discounts.....	231,052,331.47
Real Estate Mortgages—F.H.A.....	50,848,169.57
Veteran.....	17,363,557.94
All Other.....	31,621,695.65
Bank Premises and Leasehold Improvements.....	330,885,754.62
Furniture and Fixtures.....	5,984,857.37
Accrued Income and Other Resources.....	309,981.04
Total.....	\$791,872,545.22

LIABILITIES	
Demand Deposits:	
Individuals, Corporations and Banks.....	\$412,802,578.20
United States Government.....	55,125,210.90
Other Public Funds.....	\$474,700,604.53
Savings Deposits.....	28,772,815.43
Total Deposits.....	263,471,215.57
Accrued Expenses and Other Liabilities.....	738,171,820.10
Capital Funds:	
Common Stock (\$10.00 Par Value).....	10,962,500.00
Surplus.....	20,037,500.00
Undivided Profits.....	11,874,013.91
Total.....	\$291,382,729.41

MEMORANDUM
Securities pledged to secure public deposits, including deposits of \$11,896,957.89 of the State of Michigan, and for other purposes required by law..... \$69,014,513.10

- DIRECTORS**
- WENDELL W. ANDERSON JR., Vice President and General Manager, Bank of America
 - OSCAR E. BARD, Chairman of the Board, Michigan Tool Company
 - H. GLENN BIRBY, President, Excelsior Corporation
 - WM. REVE CLARK, Chairman of the Board, Tempire Products Corporation
 - E. M. FORD, Chairman of the Board, Waukegan Chemicals Corporation
 - WILLIAM CLAY FORD, Vice President and Director, Ford Motor Company
 - ARTHUR J. FISHMAN, Treasurer, Firestone
 - MERVYN G. GASKY, President, Taylor & Gaskin, Inc.
 - SHERWIN A. HILL, Hill, Lewis, Andrews, Granite & Lumber
 - GEORGE M. HOLLEY JR., President, Holly Carbonate Company
 - CHARLES A. BAXTER, Director, National Steel Corporation
 - GEORGE W. KENNEDY, Chairman of the Board, Kelsey-Hayes Company
 - HARRY J. LOYD, President, Parke, Davis & Company
 - WILLIAM A. MAYBERRY, President
 - JAMES W. PARKER, Director, The Detroit Edison Company
 - A. GUY ROOP, Senior Vice President, Western Security
 - RUSSELL S. STRICKLAND, Vice President and Director, C. W. Williams & Sawyer, Inc.
 - WILLIAM SUGHER, President, Special Products Corporation
 - GLENN E. TURNBULL, President, Turner, Turner & Woodall
 - HERBERT J. WOODALL, President, Woodall Industries, Inc.

OFFICES IN DETROIT • DEARBORN • HIGHLAND PARK • BLOOMFIELD • GROSSE POINTE WOODS • MELVINDALE • NORTHVILLE • PLEASANT RIDGE • REDFORD • SOUTHFIELD • VAN DYKE

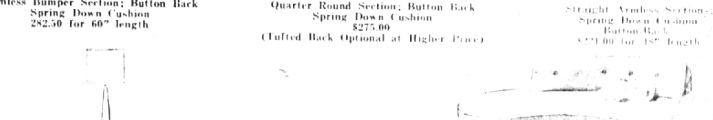
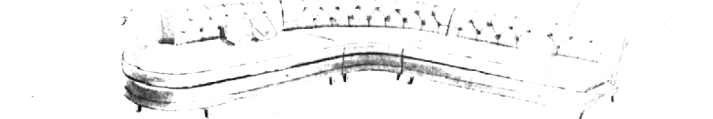
NOW... YOU CAN CUSTOM DESIGN YOUR OWN

SOFAS SECTIONALS LOVE SEATS

- Any LENGTH Desired (By The Inch)
- Any STYLE Desired
- Your Choice Of:

- Arm Styles
- Back Styles
- Curved Styles
- Button Backs
- Tufted Backs
- Leg Styles
- Straight Styles
- Spring Cushions
- Foam Rubber Cushions
- Spring Down Cushions

IMPOSSIBLE! you say? ... but that is what BEARDSLEY'S can now offer you! No longer need you hunt for the exact size sofa, sectional or loveseat you require for your room. One stop at BEARDSLEY'S and you select any size you desire. Furthermore, you have a choice of style in back, arm, armless, leg style, curved or straight. You also may choose from a fabulous selection of beautiful fabric covers. Best of all, your custom-designed sofa, love seat or sectional is made to our A-1 standards by America's finest manufacturer in Grand Rapids.



PRICES QUOTED ARE FOR STARTING GRADE COVERS AND POPULAR SIZES AS SPECIFIED. PRICES WILL VARY ACCORDING TO SIZE AND SPECIFICATIONS YOU REQUIRE.



“Home Furnishings Worth Living With”
CARPETING—DRAPERIES