



DWIGHT DAVIS (third from left) of Faculty Row, Bloomfield Hills, will sing with the "The Friars" octet of the University of Michigan Men's Glee club when

the group makes a public appearance April 26 at Bloomfield Hills high school.

UofM Men's Glee Club to Appear Here April 26

EASTER SPECIALS
Mon.—Tues.—Wed.

Complete oil cold waves \$10
incl. styling and hair shaping

Artists in tinting and silver tones

• Vera Frances hair fashions —Lathrap— EL 6-2144 Southfield at 12 Mile Rd.

• Mary Jane's —Royal Oak— LI 2-3117 723 S. Washington

PERSONALIZED HAIR CUTTING
By CHARLES
EXPERT HAIR COLORING
By NITA

HARPER BEAUTY SHOP
MI 4-6530
144 W. Maple (over R.B. Shop) Birmingham

To benefit their scholarship funds, the Detroit alumni and Birmingham alumnae clubs of the University of Michigan have scheduled an appearance here of the U of M Men's Glee club.

Fred Matthaei, Jr. is chairman of the program, planned for 8 p.m. April 26 in Bloomfield Hills high school. Numbers will be presented by the full group, soloists and the Friars octet, which has a local young man, Dwight Davis, as one of its members.

The Glee club is under the direction of Phillip Ducey, whose background includes radio and opera. He was a member of the famed "Revolvers Quartette," which included James Melton, Lewis James and Wilfred Glenn.

Serving on the ticket committee for the event are John Fawcett, Mrs. Neil Hyde, Mrs. Fred Erb

Family Vacations To Be Group Topic

Mrs. Louis D'Amrosio of 1434 Bowers will be hostess to the Adams Village extension club Tuesday at 8 p.m. Lesson for the evening will be on family vacations, with tips on how to travel with children.

Also scheduled is a talk on "Safety in the Home" by Mrs. Leo Tenney, the club's health and safety chairman. Mrs. Bruce W. Young and Mrs. Donald Schroeder are to be co-hostesses.

Society deadline is 3 p.m. each Tuesday.

Fashion

(Continued from Page 1-B)

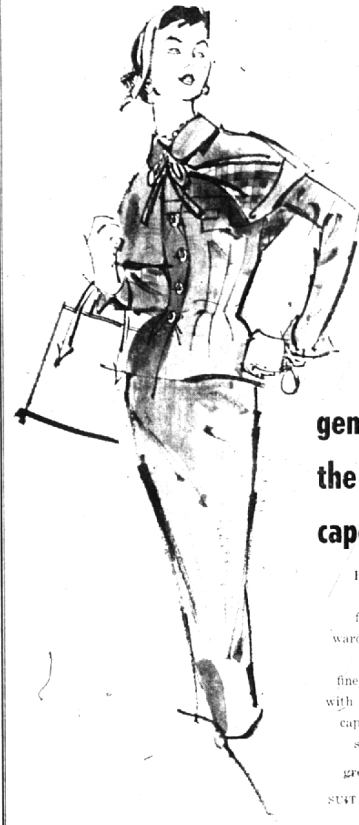
BATHING suits were far different from today's styles... black bloomer styles with a buttoned-on overshirt. And long black stockings too, nothing was left bare in those days.

However there was one blue velvet with a floating panel and a slit skirt... I'm sure you thought that was too daring... chosen for an evening of dining at the Pontchartrain. This was worn with an oversized beaver hat.

RIDING in a machine was a perfect thing of those days—the horses shied, the chickens flew and you never knew when you were going to be stuck in the mud and pulled out by a horse. Should have seen the linen duster (car coat) and chaffin scarf.

The flapper dress for the "charleston kid" with the boyish bob and the coonkin coat and pants for football games help complete the picture.

CLUB members who acted the roles of the little girl were Holly Elizabeth Babin, her grandmother, Mrs. Stanley Meyer; little girl model, Carol Ann Gillespie; little boy model, Dean Bensinger; dancer, Mrs. Duane Brezee; soloist, Mrs. John Gillespie; and pianist, Mrs. Paul Hartzgren. Mrs. Norman Boudine was program chairman and Mrs. Ford C. Ritter, social chairman. Mrs. Earl Thompson of the Goodwill Industries, helped Mrs. Kopka, promotion director for Goodwill, with the costumes.



Jacobson's

Maple at Bates
Birmingham

gem of a suit
the pearl grey
capelet

Ranone's refreshing young capelet suit is the foundation of a junior's wardrobe... yarn-dyed pearl grey worsted finely tailored to go with or without its chic little capelet... trimmed with sunlit checks of gold and grey. Sizes 7 to 15. 69.95

SUIT SALON—STREET SALON

PRE-EASTER CLEARANCE OF DESIGNER HATS

1/3 OFF!

orig. 20.00 to 60.00

Come pick your Easter Bonnet at great savings! Many are one-of-a-kind designer originals.

MILLINERY—STREET LEVEL

Jacobson's

Maple at Bates—Birmingham

a

b

c

d

e

f

g

h

the fashionable accessory:
your easter necessity

Jacobson's

Your spark of individuality is your way with accessories... the vital accents that dramatize and make all the fashion difference.

- A. Crestendoe's double-woven cotton gloves; White draped push-up, 5.00. White, beige, navy, yellow, pink or blue shortie, 4.00
- B. Bouquet of lilies of the valley, 1.00
- C. Ingenuie's oatmeal-hued textured calf pump, 18.98
- D. Linen-textured cotton tote with coral, navy and olive stripes on white, 10.98*
- E. Dainty white handkerchiefs, lavished with lace and embroidery, 1.00 to 3.00
- F. White seed beads. Necklaces, 3.00*, 5.00* Bracelet, 2.00*, Earrings, 2.00*
- G. Proportioned ultra sheer Belle-Sharmer nylons, 1.95; box of three pairs, 5.65
- H. Christine's lace profile, sprinkled with pearls. White, beige or pink, 10.98

*plus federal tax

APPAREL STORE
Maple at Bates
Birmingham

2-Hour Free Parking
HAVE YOUR TICKET VALIDATED
WHEN YOU MAKE A PURCHASE
AT JACOBSON'S

Store Hours
Monday thru Saturday
9:30 A.M. Until 5:30 P.M.