

'round the towns news

LATHRUP • FRANKLIN • WING LAKE • GILBERT LAKE • WALNUT LAKE • FOXCROFT • W. & E. BEVERLYS • THE BERSHIRE • VALLEY WOODS • SOUTHFIELD, BLOOMFIELD & W. BLOOMFIELD TOWNS.

Sidelights

By WILLIAM H. THOMAS

MRS. WARREN R. HOENSHIED, 30811 Bunting court, Southfield township, has a tree which is not common to this area—a magnolia tree, usually associated with the deep south.

And until the recent frosts took their toll of neighborhood gardens, Mrs. Hoenshied tells me that one of a half-dozen buds on the tree had blossomed. Now four years old and five feet tall, the tree, which Mrs. Hoenshied bought at a local nursery, stays outdoors all year around, but peels at the base in used for cold weather protection.

Another unusual feature of Mrs. Hoenshied's garden, in fact, at least, are two carnations, one a lavender hue, the other a purple.

ONE OF Southfield's hardest working officials, and the "hard worker" down there, Mrs. Fannie Adams, township clerk, will serve on a panel which will discuss election procedure at the Township Officers Conference when it meets in this afternoon in Port Huron.

Mrs. Adams, long an advocate of more specific laws for absentee voters, will comment strongly on this topic during discussion.

ANOTHER of Southfield township's governmental staff who will serve on a panel at the Township Officers' Conference in Miss Clara Lane, treasurer, should be discussed are tax collections, township treasurer's records and other problems of the treasurer.

R. F. WUERFEL, Southfield Board of Appeals chairman, recently received a letter, duly complimented by E. F. Nuebeck, of Bell Telephone Co. for the manner in which the appeals meetings are conducted.

In a letter to Wuerfel, Nuebeck said he was "impressed with the general conduct of the meeting and the obvious preparation that went into the agenda."

Of course, a compliment for Wuerfel is also a compliment for those who also serve on the board. Township Supervisor Eugene Swen and Clarence A. Durbin.

SOMETHING obviously must be done about hot rodding along W. Beverly road and the nearby Southfield Park, especially after the recent accident in which several teenagers were injured. West Beverly road residents have long advocated action by the township to increase police supervision or by blocking the park entrance with a gate.

Obviously, the police cannot camp there and wait for hot rodders, so it is up to the township to measure feasible would be erection of a gate as advocated by nearby homeowners.

David Campbell, 1848 Beverly road, says he speaks for his entire neighborhood when he says, "Something has to be done before someone kills themselves." Campbell, who is not only thinking of the hot rodders, there are a lot of children in that particular area.

A GOOD piece of police work went comparatively unnoted last week when Bloomfield township of police, headed by Chief Clark Green, and deputies of Oakland county sheriff's department, caught a gang fight in a bud at Telegraph and Square Lake roads. Prompt action of this sort brings appreciation from residents under the wing of such a police force.

Hascall Wright New Treasurer Of Bingham Farms

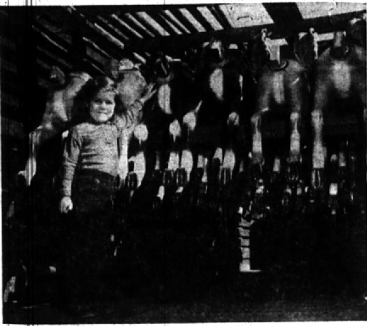
BINGHAM FARMS — Hascall Wright was sworn in Monday morning as Bingham Farms' new treasurer. He replaces James Barrett whose resignation, accepted with regret by the council, became effective Sept. 30.

"Mr. Wright has been a certified public accountant for many years," William King, village president said, "and we are fortunate that as able man as he is willing to serve. He's one of the best qualified men in the village for the job." Council voted to apply for a 100 year membership in the Municipal League. It also gave permission to Consumers Power Co. to lay a new gas line along the next two miles of the road. The work will be completed within the next two weeks, a representative from Consumers Power said.

Warner Leipprandt of Geer Associates, Birmingham, presented council members with a proposed zoning ordinance text and maps supplementing it. Discussion was held on the proposed ordinance, but no action taken.

Discussion also held on Timber Trail vacation. A settlement agreeable to property owners, the developer and the township will be made within 30 days, council members agreed.

Southfield Kiwanis Club will sponsor the appearance of the U.S. Marine band at the Southfield high school for two concerts on Oct. 21. A matinee program will be presented at 2 p.m. and the evening concert will begin at 8:15 p.m.



LOOKING FORWARD to the Boys' Upper Teens Club of Southfield carnival (which started Wednesday and ends Sunday) is Debbie Wade, four-year-old daughter of Mr. and Mrs. W. Glenn Wade, Jr., of 18110 Melrose, Southfield township, who arrived at the Boys' clubhouse at 23100 Northwestern Monday, in time to see the carnival being set up. Other rides, besides the merry-go-round are: ferris wheel; tilt-a-whirl; rock-a-plane; spin-a-roo; and auto-airplane, boat and train rides. These rides and concessions will be run by Upper Teens members and the club's service club sponsors. Profits will be used to purchase a new club house site.

Anonymous Tip Prevents Gang Fight Last Week

BLOOMFIELD TWP. — Warners were issued against 16 of 45 youths involved in what appeared to be the start of a major gang fight between Waterford and Pontiac high school boys at a drive-in located at Telegraph and Square Lake roads last week.

However, Robert Long, assistant Oakland county prosecutor, said he doubted if the boys would be tried in the charge—disturbing the peace.

An anonymous tip to Bloomfield Township Police Chief Clark N. Green and Oakland county sheriff's department, put the police on the scene before violence flared.

CONFISCATED were pocket knives, metal pipes, bicycle chains with homemade handles, jack handles and brass knuckles.

Earlier by increased police supervision or by blocking the park entrance with a gate.

3 Teenagers Hurt While Hot Rodding In Southfield Park

SOUTHFIELD — Three teenagers were injured, including two Southfield girls, when a Royal Oak youth lost control of his car while hot rod racing with another auto Monday in Southfield Park, just south of Beverly road, and hit a tree.

The driver, Howard F. Beckman, 19, of Royal Oak, suffered lip cuts, after he car backed into his path, forcing him off the road and into a tree, he told Patrolman Stanley Steinke.

Sandra Hayes, 13, of 1584 Humphrey and Sandra Layke, 16, of 1650 Hayes, passengers, were taken to the hospital for cuts and bruises.

POLICE Chief Philip LaVigne said, in answer to several complaints that hot rodders were "running wild" in the park and Beverly road area as late as midnight that a gate which had been blocking entrance to the park was knocked down after numerous attempts to keep the gate pulled back.

Nearly homeowners complained that hot rodding in the park sometimes lasted until after midnight keeping them awake, and causing damage to the youngsters driving the car as well as neighborhood children.

Steinke said Beckman was driving north on the park road in a reckless way, racing another car, when the accident occurred.

My Neighbors

"Help! Get a landing net. Get a gaff hook. Get a witness!"



U. S. Marine Band To Play in S'field

SOUTHFIELD — Southfield Kiwanis club will sponsor the appearance of the 158-year-old United States Marine Band, oldest military symphonic musical organization in the country, at Southfield high school Oct. 21.

Ray Chauvin, Kiwanis first vice president, announced that matinee and evening concerts will be presented, with musical works by the world's finest composers.

Under leadership of Captain Albert Schoepfer, the Marine band is appearing for the spring visit of the Bloomfield. However, if any of the districts wishes to donate at this time, he is free to do so.

Chairman for the Walnut Lake area, who must be contacted if any of the districts wishes to donate at this time, he is free to do so.

Bloodmobile Visits West Bloomfield Township Oct. 8

WEST BLOOMFIELD — Red Cross Bloodmobile will be at West Bloomfield township hall Oct. 8 to receive donations of blood to replenish the Interlakes blood bank which serves this area.

At this time recruiters are canvassing school districts in the west and half of the Interlakes area for donors.

Walnut Lake, Franklin and West Lake school districts will be contacted for the spring visit of the Bloodmobile. However, if any of the districts wishes to donate at this time, he is free to do so.

Chairman for the Walnut Lake area, who must be contacted if any of the districts wishes to donate at this time, he is free to do so.

Press Time

SOUTHFIELD TRUSTEE Luther Wagner moved that the township board declare its intention of amending the zoning ordinance to establish a zoning board by township ordinance, and refer it to the zoning board for public hearing.

Township board approved this action but felt that a similar motion for the planning commission be withheld until pending State legislation makes it possible for the zoning and planning boards to be combined.

IN AN EFFORT to prevent basement flooding, and to stay out of court action, trustees Tuesday night passed an ordinance which tightens restrictions on homebuilding. Called the "Iron Pipe Ordinance," it would make it mandatory in certain areas to have iron pipe running below houses, shut-off valves and or sump pumps.

Eugene Swen, township supervisor, said a certificate of occupancy issued by the township might be lost in court and if they could get Federal aid for construction under the new ordinance it would aid in eliminating flooding.

SUPERVISOR Swen also indicated that Southfield would go to court against the 12 Town Drain allocations before the Oct. 12 final hearings, because Township Attorney Harry V. Deland said that after the hearing would mean attacking the costs to Southfield on the record, and the record isn't there, said Swen, meaning all reports of the authority and the drain office are not complete.

Builders are Receptive to Lathrup's New 'Little Evergreen' Sewer Plan

West Beverly Hostess Club, Official Greeters for Area

By RUTH ANNE SILBAR

WEST BEVERLY — Life in West Beverly is pleasanter, friendlier, because of the Hostess Club.

This organization, representing approximately 450 families in the area, serves a social and community need for its women members.

As stated in the by-laws, the club's purpose is "to initiate and promote a good-neighbor policy, cooperate in maintenance and improvement of community conditions, and effect a closer cooperation among people of the community to produce a satisfying social relationship for the well-being of all."

Westwood Village Petitions Complete

SOUTHFIELD — Petitions for incorporation of the East and West Beverly and Berkshire Hills areas in northern Southfield as a home-rule village, were turned over Monday to Howard I. Bond, the area's attorney.

Bond said he would turn the petitions over to the Oakland county board of supervisors as soon as they are checked.

Before action can be taken on the petitions, those in the affected area must vote down a charter for the proposed city of Southfield at a Dec. 3 election, and, if approved, a referendum is presented before June 7, that, too, must be turned down by voters.

Those in the northern area will become a part of the city. Being considered for incorporation is a square mile with a 6,376 population located between Greenfield and Evergreen roads from 13 mile to 14 mile roads and between Evergreen and Bingham Farms Village from between 12th and 14 mile roads.

Bloodmobile Visits West Bloomfield Township Oct. 8

WEST BLOOMFIELD — Red Cross Bloodmobile will be at West Bloomfield township hall Oct. 8 to receive donations of blood to replenish the Interlakes blood bank which serves this area.

At this time recruiters are canvassing school districts in the west and half of the Interlakes area for donors.

Walnut Lake, Franklin and West Lake school districts will be contacted for the spring visit of the Bloodmobile. However, if any of the districts wishes to donate at this time, he is free to do so.

Chairman for the Walnut Lake area, who must be contacted if any of the districts wishes to donate at this time, he is free to do so.

Elizabeth Molnar Terms S'field Charter a 'Monster'

(EDITOR'S NOTE: This is the fifth in a series of nine articles to be written each week by a different member of the Southfield charter commission. This week's writer is Mrs. James (Elizabeth) Molnar.)

By ELIZABETH MOLNAR

With a more homogeneous area to incorporate, this charter could have been properly written and completed within the 90-day time limit stipulated by law.

It may seem that some of the commissioners creating this "monster," may have done so for personal gain, or foisted their own viewpoints upon the voters rather than give the public what the people want. Difficulty was also encountered because the commission represented dissimilar groups and areas.

This charter may be an indication of the difficulties such a large nonhomogeneous area can anticipate if incorporated. Commissioners should write the best charter possible—in the event the charter is "accepted" they will not adopt hardship for the people and shame for the commission members.

West Beverly Hostess Club, Official Greeters for Area

By RUTH ANNE SILBAR

WEST BEVERLY — Life in West Beverly is pleasanter, friendlier, because of the Hostess Club.

This organization, representing approximately 450 families in the area, serves a social and community need for its women members.

As stated in the by-laws, the club's purpose is "to initiate and promote a good-neighbor policy, cooperate in maintenance and improvement of community conditions, and effect a closer cooperation among people of the community to produce a satisfying social relationship for the well-being of all."

Westwood Village Petitions Complete

SOUTHFIELD — Petitions for incorporation of the East and West Beverly and Berkshire Hills areas in northern Southfield as a home-rule village, were turned over Monday to Howard I. Bond, the area's attorney.

Bond said he would turn the petitions over to the Oakland county board of supervisors as soon as they are checked.

Before action can be taken on the petitions, those in the affected area must vote down a charter for the proposed city of Southfield at a Dec. 3 election, and, if approved, a referendum is presented before June 7, that, too, must be turned down by voters.

Those in the northern area will become a part of the city. Being considered for incorporation is a square mile with a 6,376 population located between Greenfield and Evergreen roads from 13 mile to 14 mile roads and between Evergreen and Bingham Farms Village from between 12th and 14 mile roads.

Bloodmobile Visits West Bloomfield Township Oct. 8

WEST BLOOMFIELD — Red Cross Bloodmobile will be at West Bloomfield township hall Oct. 8 to receive donations of blood to replenish the Interlakes blood bank which serves this area.

At this time recruiters are canvassing school districts in the west and half of the Interlakes area for donors.

Walnut Lake, Franklin and West Lake school districts will be contacted for the spring visit of the Bloodmobile. However, if any of the districts wishes to donate at this time, he is free to do so.

Chairman for the Walnut Lake area, who must be contacted if any of the districts wishes to donate at this time, he is free to do so.

Elizabeth Molnar Terms S'field Charter a 'Monster'

(EDITOR'S NOTE: This is the fifth in a series of nine articles to be written each week by a different member of the Southfield charter commission. This week's writer is Mrs. James (Elizabeth) Molnar.)

By ELIZABETH MOLNAR

With a more homogeneous area to incorporate, this charter could have been properly written and completed within the 90-day time limit stipulated by law.

It may seem that some of the commissioners creating this "monster," may have done so for personal gain, or foisted their own viewpoints upon the voters rather than give the public what the people want. Difficulty was also encountered because the commission represented dissimilar groups and areas.

This charter may be an indication of the difficulties such a large nonhomogeneous area can anticipate if incorporated. Commissioners should write the best charter possible—in the event the charter is "accepted" they will not adopt hardship for the people and shame for the commission members.

Builders are Receptive to Lathrup's New 'Little Evergreen' Sewer Plan

Southfield builders, who met with township and Lathrup officials Saturday agreed that they would look into a plan whereby Lathrup could join in the "Little Evergreen" Interceptor sewer.

Lathrup has until Oct. 26 to find an answer to Rouge river pollution, and the Evergreen sewer seems to be the answer if Lathrup, Southfield and builders who have formed the Southfield-Evergreen Corp. to build the sewer, can get together.

Friday Oakland County Circuit Judge H. Russell Holland agreed to a one-month delay in the case giving Lathrup time to iron out details involved in the sewer plan.

Westwood Village Petitions Complete

SOUTHFIELD — Petitions for incorporation of the East and West Beverly and Berkshire Hills areas in northern Southfield as a home-rule village, were turned over Monday to Howard I. Bond, the area's attorney.

Bond said he would turn the petitions over to the Oakland county board of supervisors as soon as they are checked.

Before action can be taken on the petitions, those in the affected area must vote down a charter for the proposed city of Southfield at a Dec. 3 election, and, if approved, a referendum is presented before June 7, that, too, must be turned down by voters.

Those in the northern area will become a part of the city. Being considered for incorporation is a square mile with a 6,376 population located between Greenfield and Evergreen roads from 13 mile to 14 mile roads and between Evergreen and Bingham Farms Village from between 12th and 14 mile roads.

Bloodmobile Visits West Bloomfield Township Oct. 8

WEST BLOOMFIELD — Red Cross Bloodmobile will be at West Bloomfield township hall Oct. 8 to receive donations of blood to replenish the Interlakes blood bank which serves this area.

At this time recruiters are canvassing school districts in the west and half of the Interlakes area for donors.

Walnut Lake, Franklin and West Lake school districts will be contacted for the spring visit of the Bloodmobile. However, if any of the districts wishes to donate at this time, he is free to do so.

Chairman for the Walnut Lake area, who must be contacted if any of the districts wishes to donate at this time, he is free to do so.

Elizabeth Molnar Terms S'field Charter a 'Monster'

(EDITOR'S NOTE: This is the fifth in a series of nine articles to be written each week by a different member of the Southfield charter commission. This week's writer is Mrs. James (Elizabeth) Molnar.)

By ELIZABETH MOLNAR

With a more homogeneous area to incorporate, this charter could have been properly written and completed within the 90-day time limit stipulated by law.

It may seem that some of the commissioners creating this "monster," may have done so for personal gain, or foisted their own viewpoints upon the voters rather than give the public what the people want. Difficulty was also encountered because the commission represented dissimilar groups and areas.

This charter may be an indication of the difficulties such a large nonhomogeneous area can anticipate if incorporated. Commissioners should write the best charter possible—in the event the charter is "accepted" they will not adopt hardship for the people and shame for the commission members.

Builders are Receptive to Lathrup's New 'Little Evergreen' Sewer Plan

Southfield builders, who met with township and Lathrup officials Saturday agreed that they would look into a plan whereby Lathrup could join in the "Little Evergreen" Interceptor sewer.

Lathrup has until Oct. 26 to find an answer to Rouge river pollution, and the Evergreen sewer seems to be the answer if Lathrup, Southfield and builders who have formed the Southfield-Evergreen Corp. to build the sewer, can get together.

Friday Oakland County Circuit Judge H. Russell Holland agreed to a one-month delay in the case giving Lathrup time to iron out details involved in the sewer plan.

Westwood Village Petitions Complete

SOUTHFIELD — Petitions for incorporation of the East and West Beverly and Berkshire Hills areas in northern Southfield as a home-rule village, were turned over Monday to Howard I. Bond, the area's attorney.

Bond said he would turn the petitions over to the Oakland county board of supervisors as soon as they are checked.

Before action can be taken on the petitions, those in the affected area must vote down a charter for the proposed city of Southfield at a Dec. 3 election, and, if approved, a referendum is presented before June 7, that, too, must be turned down by voters.

Those in the northern area will become a part of the city. Being considered for incorporation is a square mile with a 6,376 population located between Greenfield and Evergreen roads from 13 mile to 14 mile roads and between Evergreen and Bingham Farms Village from between 12th and 14 mile roads.

Bloodmobile Visits West Bloomfield Township Oct. 8

WEST BLOOMFIELD — Red Cross Bloodmobile will be at West Bloomfield township hall Oct. 8 to receive donations of blood to replenish the Interlakes blood bank which serves this area.

At this time recruiters are canvassing school districts in the west and half of the Interlakes area for donors.

Walnut Lake, Franklin and West Lake school districts will be contacted for the spring visit of the Bloodmobile. However, if any of the districts wishes to donate at this time, he is free to do so.

Chairman for the Walnut Lake area, who must be contacted if any of the districts wishes to donate at this time, he is free to do so.

Elizabeth Molnar Terms S'field Charter a 'Monster'

(EDITOR'S NOTE: This is the fifth in a series of nine articles to be written each week by a different member of the Southfield charter commission. This week's writer is Mrs. James (Elizabeth) Molnar.)

By ELIZABETH MOLNAR

With a more homogeneous area to incorporate, this charter could have been properly written and completed within the 90-day time limit stipulated by law.

It may seem that some of the commissioners creating this "monster," may have done so for personal gain, or foisted their own viewpoints upon the voters rather than give the public what the people want. Difficulty was also encountered because the commission represented dissimilar groups and areas.

This charter may be an indication of the difficulties such a large nonhomogeneous area can anticipate if incorporated. Commissioners should write the best charter possible—in the event the charter is "accepted" they will not adopt hardship for the people and shame for the commission members.

Elizabeth Molnar Terms S'field Charter a 'Monster'

(EDITOR'S NOTE: This is the fifth in a series of nine articles to be written each week by a different member of the Southfield charter commission. This week's writer is Mrs. James (Elizabeth) Molnar.)