

Correction

In the September 13 issue of the Birmingham Eccentric, in an article concerning the Valley Woods elementary school, the architect was Smith, Tarapata and MacMahon. This firm is working on other schools for the board. Eberle M. Smith is architect for the Valley Woods school. The Eccentric regrets the error.

Today's NEW concept
in MODERN styling...

the
TOPPER



CANTON
FIFTH AVENUE Hats

You will look your "handsome" in the TOPPER. That's because it represents a truly new concept in hat styling, today's fashion in every man who wears one. Superiorly crafted to minimalist detail... with new wide band and bow-tieback. Try it in today, possibly the most becoming hat you've ever worn.

\$15

Gwynn's
Custom Tailoring
112 South Woodward
Midwest 4-7040

675 N. Eton Road
Graefel Terrace
Midwest 4-3076

3 blocks north of Grand Truck
Station in Birmingham

Colonial Cleaners

and Hatters

ONE STOP SERVICE!

- CLEANING
- LAUNDRY
- HAT CLEANING
- RE-WEAVING

We're Proud of Our Fine
Service and Quality Work

MI 4-8133

1184 S. Woodward Birmingham
(Just South of Lincoln)

CHRISTMAS CARDS

3 1/2" x 5 1/2"

50 PERSONALIZED CARDS

\$3.45

50 Cards for \$2.00 Without Imprint

A LARGE AND VARIED SELECTION
OF CHRISTMAS CARDS OF ALL KINDS
HERE FOR YOUR SELECTION!

The WINE SHOP

"SERVING YOU IN GOOD TASTE"

Beer • Wine
Champagne
Midwest 6-1011
255 Pierce St.

Food • Gifts
Baskets
Free
Delivery

Archery, Crafts Enjoyed at YMCA Saturday Mornings

There's plenty of activity at the Birmingham YMCA on Saturday mornings from 9 to 12 p.m. While some boys and girls play ping pong, table hockey, topknots, checkers or chess in the lobby, others are enjoying archery outdoors.

Beginning Saturday, handicraft classes are scheduled for 10 a.m. to noon, with different craftwork items listed each week. Plaster of paris molds are listed for Saturday, with successive weeks' work including figurine painting, lead pictures, glass etching, lanyards, copper enameling, (tidal) rings, ring purses, baskets, bracelets and belts.

Tom Hewitt is handicraft instructor.

One-hour archery classes are taught by Dick Williams at 10 and 11 a.m. Each boy will shoot 10 rounds of five shots each, and classes will continue through Nov. 10, if weather permits.

SACRIFICE SALE

MUST VACATE APARTMENT BY SUNDAY

- Spinet Piano
- RCA-TV Console with doors
- Writinghouse Landmark
- Maple Studio Couch
- Matching rocker-type chair
- Cherry twin beds complete, large Matt. & Mrs. dresser with mirror, upholstered
- National Rotary Electric Sewing Machine in beautiful cherry desk
- Solid walnut chest, 4-drawers, needs refinishing
- Walnut knee-hole desk, leather top, matching chair
- Large round card table with 6 folding chairs—never used
- Blue-tinted carpeting, with padding to fit in living and dining rooms, dishes, silver, kitchen items, small appliances, small cast iron grill, small matching storage cabinet, and many other items

John R. Hughes Wins C.P.C.U. Award

Among the 217 insurance men and women who were awarded the Chartered Property Casualty Underwriter (C.P.C.U.) designation at the recent meeting in Cincinnati was John R. Hughes, 448 South Williamsburg, Birmingham.

Hughes is assistant to insurance manager, Parke, Davis & Company. In order to receive the designation, one must pass five examinations covering a wide variety of subjects. In addition to the examinations, one must have at least three years of experience in property and casualty insurance business in order to earn the award.

City Reviews Needed Projects

(Continued from Page 1, Sec. 1)

structed until the completion of the Chester-Wallace sewer, but probably assessment proceedings could be started. This alley should be constructed in conjunction with Parking Lot No. 4.

Davis, Emmons, Cummings Payment

This project was petitioned for several years ago but can not be constructed until the Bird, Smith, and Cummings projects are completed.

LEGAL NOTICES

ANNUAL REPORT OF THE CITY OF BIRMINGHAM SEWER TREATMENT DEPARTMENT FOR FISCAL YEAR ENDING JUNE 30, 1956

COMPARATIVE BALANCE SHEET

(Balance Beginning of Year)

ASSETS AND OTHER DEBITS

Utility Plant

Investment and Fund Accounts

Current and Accrued Assets

Notes and Accounts Receivable

Materials and Supplies

Miscellaneous Current and Accrued Assets

Total Current and Accrued Assets

Deferred Debits

Miscellaneous Deferred Debits

Total Assets and Other Debits

LIABILITIES AND OTHER CREDITS

Long-Term Debt

Bonds—Indebtedness

Current and Accrued Liabilities

Accounts Payable

Payables to Municipality

Other Current and Accrued Liabilities

Total Current and Accrued Liabilities

Reserves

Reserve for Depreciation of Utility Plant

Reserve for Contingencies

Miscellaneous Reserves

Total Reserves

Surplus

Earned Surplus

Capital Surplus

Total Surplus

Total Liabilities and Other Credits

UTILITY OPERATING INCOME

Operating Revenues

Operating Revenue Deductions

Customer Deposits

Administrative and General Expenses

Depreciation

Insurance and Employee Protection

Total Operating Expense

Other Income

Other Income

Balance Transferred to Earned Surplus

EARNED SURPLUS

Earned Surplus Beginning of Year

Credit Balance Transferred from Income Account

Credit Balance Interest on Joint Construction Fund

Earned Surplus End of Year

J. H. Purkins, Jr.
Director of Finance

(29)

ANNUAL REPORT OF CITY OF BIRMINGHAM WATER DEPARTMENT FOR FISCAL YEAR ENDING JUNE 30, 1956

Population served: 122,000. Average number of meters in service: 7,150. M. gallons pumped to mains: 819,684. M. gallons sold: 791,375. Revenues from sales: \$228,946.42. Average number of customers: 1,112.

COMPARATIVE BALANCE SHEET

(Balance Beginning of Year)

ASSETS AND OTHER DEBITS

Utility Plant

Investment and Fund Accounts

Current and Accrued Assets

Cash and Working Funds

Notes and Accounts Receivable

Materials and Supplies

Miscellaneous Current and Accrued Assets

Total Current and Accrued Assets

Deferred Debits

Miscellaneous Deferred Debits

Total Assets and Other Debits

LIABILITIES AND OTHER CREDITS

Long-Term Debt

Bonds—Utility

Current and Accrued Liabilities

Notes and Accounts Payable

Payables to Municipality

Customer Deposits

Other Current and Accrued Liabilities

Total Current and Accrued Liabilities

Reserves

Reserve for Depreciation of Utility Plant

Miscellaneous Reserves

Total Reserves

Surplus

Earned Surplus

Capital Surplus

Total Surplus

Total Liabilities and Other Credits

UTILITY OPERATING INCOME

Operating Revenues

Operating Revenue Deductions

Production Expenses

Distribution Expenses

Customers' Accounting & Collecting Exp.

Administrative and General Expenses

Depreciation

Insurance and Employee Protection

Total Operating Expense

Other Income

Other Income

Balance Transferred to Earned Surplus

EARNED SURPLUS

Earned Surplus Beginning of Year

Credit Balance Transferred from Income Account

Credit Balance Interest on Joint Construction Fund

Earned Surplus End of Year

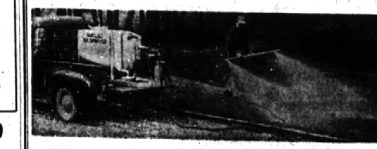
J. H. Purkins, Jr.
Director of Finance

(29)

LAWN FERTILIZING AND SEEDING WEED AND INSECT ERADICATION

Do not let pests and starvation destroy your lawn. A sick lawn is easy prey for weeds, ants, and worms, grubs, chinch bugs and many other pests. Let us feed your lawn with a 14 element all mineral plant food that invigorates growth and color.

We can destroy those obnoxious weeds and other tormenting pests and feed your lawn all in the same application, saving you double or triple cost.



OUR METHOD OF SPRAY SEEDING is the most unique and efficient method known, seed is fertility coated for faster germination, spread evenly and accurately. No waste and requiring less seed.

Call us for free estimate, you are under no obligation.

FERTILIZE-BLOOMFIELD LAWN CULTURE

Beauty Special

Look your prettiest during the fall days ahead. Have a new Permanent Wave or a stunning new hair style by a professional operator.

MODERN BEAUTY SALON

271 W. Maple MI. 4-2666

not a sweeter sleeper in town than our

Carters

Dresden-print

SUNDOWNS

Delicate-looking, yet — but there's warmth and long wear knit into every stitch. Pull-over top has rollover collar with solid-color neck and cuff ribbing. Pant has long life elastic waistband and non-skid "Safety-Step" feet. Like all Carter-cotton knits, it's washable and NEEDS NO IRONING.

Carter-Knit so it won't shrink out of fit.

In Blue Dresden or Pink Dresden.

SIZES 4 to 8 years \$3.50

LITTLE FOLKS SHOP

175 W. Maple MI 4-0612

Injured in Crash

When cars they were driving crashed at the intersection of Taunton and Torry streets Tuesday, Ernest H. Piche, 53, of Walled Lake, and Mae E. Greeley, 68, of Detroit, were taken to Beaumont hospital for treatment of cuts and bruises.

Retired Executives

If you wish to be active in Management Consulting Work on a full or part-time basis, we maintain contact with over 1000 employers.

For personal discussion, please submit a brief confidential outline of experience and basis of remuneration you would consider.

Box 187 Birmingham Eccentric

Fox & Hounds Inn

Woodward Avenue in Bloomfield Hills

LUNCHEONS and DINNERS

Sunday 1:30 p.m. to 9:00 p.m.

Monday through Saturday 6 to 11 p.m.

Phone MI 4-6800 for Reservations

CHILDREN'S FOOTBALL EQUIPMENT

• FOOTBALLS 2.98-4.98

• HELMETS 3.50-4.98

Shoulder Pads — Pants — Jerseys and Complete Outfits

ALICE'S WONDERLAND

of TOYS

362 E. MAPLE Charge Accounts Invited

MI 6-1113

The first sign of Autumn

when your wardrobe simply will not function without NEW SUEDE PUMPS!

Tweddies

ALLURING FOOTWEAR

Newest

Newest

Newest

Newest

FEATHER FLORE

Your Choice

\$15.95

Black or brown calf with attractive trim \$15.95

Black suede with black gun metal trim — brown suede with brown leather trim \$15.95

Black or brown calf with attractive trim \$15.95

Black suede with black gun metal trim — brown suede with brown leather trim \$15.95

Black or brown calf with attractive trim \$15.95

Black suede with black gun metal trim — brown suede with brown leather trim \$15.95

Black or brown calf with attractive trim \$15.95

Black suede with black gun metal trim — brown suede with brown leather trim \$15.95

Black or brown calf with attractive trim \$15.95

Black suede with black gun metal trim — brown suede with brown leather trim \$15.95

Black or brown calf with attractive trim \$15.95

Black suede with black gun metal trim — brown suede with brown leather trim \$15.95

Black or brown calf with attractive trim \$15.95

Black suede with black gun metal trim — brown suede with brown leather trim \$15.95

Black or brown calf with attractive trim \$15.95

Black suede with black gun metal trim — brown suede with brown leather trim \$15.95

Black or brown calf with attractive trim \$15.95

Black suede with black gun metal trim — brown suede with brown leather trim \$15.95

Black or brown calf with attractive trim \$15.95

Black suede with black gun metal trim — brown suede with brown leather trim \$15.95

Black or brown calf with attractive trim \$15.95

Black suede with black gun metal trim — brown suede with brown leather trim \$15.95

Black or brown calf with attractive trim \$15.95

Black suede with black gun metal trim — brown suede with brown leather trim \$15.95

Black or brown calf with attractive trim \$15.95

Black suede with black gun metal trim — brown suede with brown leather trim \$15.95

Black or brown calf with attractive trim \$15.95

Black suede with black gun metal trim — brown suede with brown leather trim \$15.95

Black or brown calf with attractive trim \$15.95

Black suede with black gun metal trim — brown suede with brown leather trim \$15.95

Black or brown calf with attractive trim \$15.95

Black suede with black gun metal trim — brown suede with brown leather trim \$15.95

Black or brown calf with attractive trim \$15.95

Black suede with black gun metal trim — brown suede with brown leather trim \$15.95

Black or brown calf with attractive trim \$15.95

Black suede with black gun metal trim — brown suede with brown leather trim \$15.95

Black or brown calf with attractive trim \$15.95

Black suede with black gun metal trim — brown suede with brown leather trim \$15.95

Black or brown calf with attractive trim \$15.95

Black suede with black gun metal trim — brown suede with brown leather trim \$15.95

Black or brown calf with attractive trim \$15.95

Black suede with black gun metal trim — brown suede with brown leather trim \$15.95

Black or brown calf with attractive trim \$15.95

Black suede with black gun metal trim — brown suede with brown leather trim \$15.95

Black or brown calf with attractive trim \$15.95