

BARBARA McCall SEAVER SCHOOL OF BALLET

will begin the 15th season of classes
Thursday, September 20th

- Classes in Ballet, Toe, Character
- Pre-Ballet classes for 4-year-olds
- Ballroom classes for 4th, 5th, 6th grades

ENROLLMENTS OPEN NOW

1732 W. Maple
Birmingham

Midwest 4-5442
Mayfair 6-2857



SPECIALY
PRICED—

AND SPECIALLY ADORABLE!
cuddly musical animals

3.95 each

A whole wonderful world of make-believe comes to life when these lovable stuffed toy animals start playing tinkly tunes from imported swiss music boxes. Kitty, bear, and elephant, all with firmly anchored button eyes, are delightful in pastel soil-resistant plush.

TOYS—PARKING LEVEL

Jacobson's

BIRMINGHAM

Gentlemen:

Your wardrobe
is our business



SUITS from our
CUSTOM DEPARTMENT

Priced from \$145.00

MADE TO MEASURE
SUITS Priced from \$75.00

Gwynn's
CUSTOM TAILORING

112 So. Woodward
Near Maple

MT. 4-7060



MRS. HELENE DICKS FREUND of Lone Pine road, commentator, with Debbie K. Foster in her tan felt skirt and matching sweater, accented with applique roosters, and her brother, Bobby Foster, in brown ivy league.

Autumn Hues Lend Accent For Fashion Background

Mrs. H. P. Meloche, chairman of last week's card luncheon and fashion show at Plum Hollow Golf club, was as fashionable as the models.

She came in a coat-dress styled with the new empire lines of black gros De Londres. With it she wore a large white hat made of white slipper satin, the brim of which was covered with crushed white fur. She carried an over-sized purse of black velvet accented with a large padded needlepoint embroidered rose, encircled with iridescent bronze beads. Clear lucite slippers and short white gloves completed her costume.

paper with contrasting ribbon. Other packages were wrapped in heavily embossed paper of gold and yellow tied with ribbons the color of red oak leaves. Branches with iridescent treated red oak leaves formed the skirt around the table and miniature ones were scattered among the packages.

A BACKGROUND of music was played by Mrs. C. E. Turner for the fashion parade presented by

the Cheer shop of Birmingham and two Detroit stores. Mrs. Helene Dicks Freund of Lone Pine road was commentator. Birmingham models were Mrs. H. J. Thomson, Mrs. R. W. Duncan and Mrs. A. A. Kernjack, of Southfield.

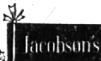
Among the Birmingham area guests were Mrs. Gerald K. Johnson, Mrs. Harvey Ewald, Mrs. Arthur B. McWood, Mrs. Herbert Carr, Mrs. Charles G. Adams, Mrs. R. J. Vidgear, Mrs. Hugh R. Black, Mrs. Elmer F. Weiss, Mrs. Orrin S. Guley, Mrs. Alfred Macksey and Mrs. Warren Wood.

COMMITTEE members were identified by corsages of either yellow rosebuds or tallisman roses with miniature oak leaves in the same color. Besides Mrs. Meloche they were Mrs. B. J. Bauer, Mrs. E. B. Foster, Mrs. J. E. McAllister, Mrs. A. J. Morrison and Mrs. D. J. Ingraham.

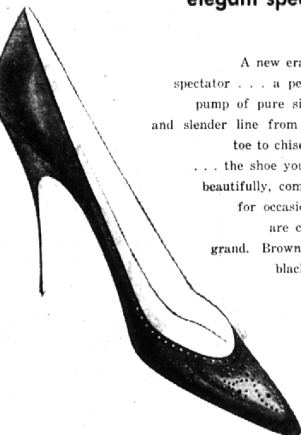
Long tables located in the main lobby were arranged with prizes wrapped in copper-tone or yellow

For a Limited Time Only — Until September 30

10% DISCOUNT ON ALL
PERSONALIZED
CHRISTMAS CARDS



Dominic Romano
and the
elegant spectator



19.95

A new era, a new spectator... a perforated pump of pure simplicity and slender line from tapered toe to chiseled heel... the shoe you'll wear beautifully, comfortably for occasions that are casual or grand. Brown calf or black suede.

SHOE SALON—STREET LEVEL

Jacobson's

BIRMINGHAM

COMMUNITY HOUSE CALENDAR

Thursday, Sept. 20
6:30 p.m.—Business Womens Dinner
6:30 p.m.—Dale Carnegie Class
7:30 p.m.—Recovery Group
8 a.m.—Beta Sigma Phi Meeting
8 p.m.—Painting Class
8 p.m.—Photography Class
Friday, Sept. 21
9 a.m.—Silver Class
9:30 a.m.—AAUW Theater Rehearsal
10 a.m.—Girl Scout Council
10:30 a.m.—Senior Workshop
1 p.m.—Enameling Class
1 p.m.—Bridge Class
1:30 p.m.—Unity Group
Saturday, Sept. 22
10 a.m.—Painting-Drawing Class
Monday, Sept. 24
9 a.m.—Sewing Class
9:30 a.m.—AAUW Theater Group
10 a.m.—Musical Board
noon—Rotary Club Luncheon
12:30 p.m.—Brownie Training Course
1 p.m.—Sculpture Class
5:30 p.m.—Hi-12 Dinner
7 p.m.—Sculpture Class
8 p.m.—Bridge Class
8 p.m.—Stamp Club
Tuesday, Sept. 25
9:30 a.m.—Baliwin Scout Leaders
noon—Exchange Club Luncheon
1 p.m.—Creative Pottery Class
1 p.m.—Bridge Class
3:30 p.m.—Girl Scout Troop Meeting
3:30 p.m.—Painting-Drawing Class
5:30 p.m.—Kiwanis Club Dinner
7 p.m.—Birmingham Crea. Womens Dinner
7 p.m.—Sewing Class
7 p.m.—Creative Pottery Class
7:50 p.m.—Vulture Club Meeting
7:50 p.m.—Painting Class
8 p.m.—Birmingham Forum
Wednesday, Sept. 26
9 a.m.—Silver Class
9:30 a.m.—AAUW Theater Rehearsal
10 a.m.—Planned Parenthood Meeting
noon—Lions Club Luncheon
1 p.m.—Painting Class
1 p.m.—D.A.R. Antique Show
1 p.m.—Enameling Class
1 p.m.—Bridge Class
3:30 p.m.—Painting-Drawing Class
7 p.m.—Silver Class
8 p.m.—Bridge Class
8 p.m.—Duplicate Bridge
Thursday, Sept. 27
9 a.m.—Terra Cotta Sculpture Group

9:30 a.m.—Gardening Class
9:30 a.m.—Painting Class
1 p.m.—D.A.R. Antique Show
1 p.m.—Interior Decorating Class

News copy submitted early is necessarily given preference, so the "early bird" usually gets the space.



so very fitting...
so very flattering...
so very fashion right!

Belle Sharmeer

LEG SIZE
STOCKINGS

select them in beautiful
new fall shades,
correlated with the
new fashion colors.

1.35, 1.65, 1.95 a pair



brev (purple edge) for slender or
small legs. Sizes 8 to 10 1/2.
modite (green edge) for average
legs. Sizes 11 to 12.

duchesse (red edge) for tall, larger
legs. Sizes 13 to 15 1/2.

HOSIERY—STREET LEVEL

Jacobson's

BIRMINGHAM

THE KASPER
OF ARNOLD-
FOX FALL
COLLECTION
OF STREET
AND LATE DAY
DRESSES
WILL BE
INFORMALLY
MODELED
FOR YOU
FRIDAY,
SEPTEMBER 21

KASPER'S

VIEWPOINT
FALL 1956

DRESS SALON
STREET LEVEL

Jacobson's

BIRMINGHAM