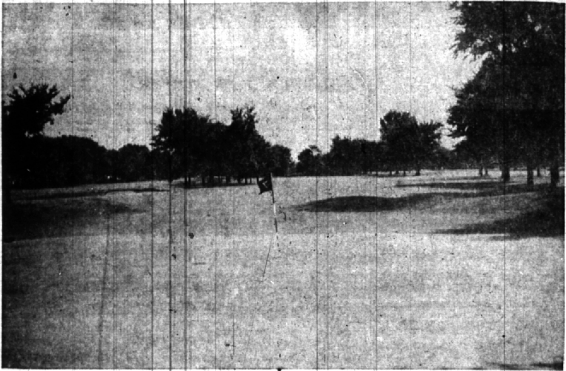


## ★ ★ Scorecard Heartbreakers ★ ★



Even though the tree-lined Red Run Golf Club is located in Royal Oak, it boasts a large membership of Birmingham area golfers. The carefully groomed 6,755-yard course has hosted two Motor City tournaments for the touring professionals in the last few years and retains its rating as a championship test.

Top golf man at the club is Frank Metzger who will be completing his sixth year as head pro. The tall, scholarly speaking Metzger claimed three holes on the course as being very difficult—six and seven for the average player and number four for the professionals.

AFTER FURTHER consideration, with quick support from a member who was standing by, Frank finally pointed to number seven. It is a long 425-yards at a par four. The tree enveloped fairway has a slight bend to the left but remains perfectly flat from tee to green. What makes the hole hard said Frank, "It is difficult to get home in two because of a bunker which telescopes across part of the fairway in front of the green. It creates an illusion because a player not familiar with the course thinks that the green and bunker run together."

THIS BUNKER occupies about two thirds of the open fairway at that point and lies approximately 40-yards from the green.

For the normal golfer his series of shots will go: driver from tee, then spoon off the ground, next, a full nine-iron to the green.

"What makes this doubly tough for a weak driver is the type of thick and lush turf" added Metzger, "it doesn't allow for any roll—the drive has got to be all carry."

The seventh green is large and free shaped and does hold a shot well. Shallow traps to the right and left, present somewhat of a hazard for a poorly directed shot. To the rear the green it falls off to about six feet or so.

THE UNULATING green is called a fair test for the putter, being tricky but not difficult. According to Metzger, the seventh hole is certainly bogged much more than parred. "If you do par this hole, you feel like you hit a hole!"

Holding the course record at 64 are three pros — Byron Nelson, Chuck Koos and Fred Haas.

The 41-year-old Metzger is especially proud of his junior golf program which has trained a number of outstanding young players over the last couple of years.



FRANK METZGER



FRANKLIN'S first Little League season closed with the Yankees winning the championship and the trophy after downing the second-place Red Sox 24-5 in a recent playoff contest. The Yankees, coached by (back row, left to right) Dave Bartleson, Leonard Pogue and Jim Allen, had a 12-7 record in season play and 2-1 record in the playoffs. The team members are: (first row) Tom Waters, Ron Soltman, Roy Waters, Jimmy Allen, Pete Allen and J. D. Bartleson. Second row: Terry Moore, Jim Brundage, Dave Kawecki, Billy Pogue, Rick Carrier and Lorry Richards.

## B'ham Babe Ruth League Reviews 1956 Program

For the second straight year, the Babe Ruth League has maintained five Major League teams. This year, however, an additional baseball game was scheduled every week and, also, the season started one week earlier than prior years. These extra games increased the league's expenses for umpires, baseballs, and for field maintenance.

This year, in addition, the league undertook an experiment whereby we formed the Birmingham Junior Baseball League which is really the minor league for the Babe Ruth group. In the Junior Baseball League we had six teams with approximately 20 boys on each team, thereby providing supervised recreation for an additional 120 boys.

THE INTRODUCTION of the minor league necessitated the expenditure of approximately \$1,000 more this year than was spent in earlier years. The league felt the junior baseball league was highly successful and a fine compliment to Vince Scoville, president of the junior league, and to all the

## Yankees Top Team In Franklin LL

Former Detroit Tiger pitching star, Dizzy Trout tossed out the first ball to get the Franklin Little League playoff game started last week in Franklin Village.

Battling for the league championship were the second half leaders, Yankees matched against the Red Sox.

The Yankees won the crown in an easy fashion by the wide score of 24-5 capitalizing on the wildness of Red Sox pitchers and their lack of hitting by Red Sox batters at the plate.

LEADING the rout for the Yankees was J. D. Bartleson who came across the plate with five runs and in turn batted in five big RBIs. Four of the runs were via a bases loaded home run.

Another slugger who added to the grand total was Marshall Scherba going to bat for three hits which produced an additional four runs. Other batters who collected run gathering blows were Rick Carrier and Roy Waters.

Pitching chores were skillfully handled for the Yankees as the trio of Jim Allen, Marshall Scherba and Roy Waters combined talents. Between them they allowed only four earned runs and one unearned run.

Box Score—Yankees — 6 0 4 0 5 9—24  
Red Sox — 0 0 3 1 0 1—5

managers, coaches, umpires, and scorers who voluntarily helped with this fine program.

This year for the first time we are awarding achievement certificates to all boys who participated in the major league program. These certificates will be available to each boy who was on a Babe Ruth League team roster and who has turned in his uniform in to his manager.

THOSE BOYS selected for the 1956 Birmingham All-Star Team will be awarded an additional certificate acknowledging this special recognition they have received.

The league started the 1956 Season with cash on hand of \$1,744. During the year receipts totaled \$2,738. However, expenditures for this season totaled approximately \$3,000; and, therefore, the balance on hand at the close of the 1956 Season is \$1,482—\$262 less than on hand at the start of the 1956 Season.

THIS YEAR rather than the customary four or five team sponsors as in other years, only three team sponsors furnished support for the league; namely Wilson Pontiac-Cadillac, Inc.; Suburban Motors Company, Inc.; and Abstract & Title Guaranty Company. As a consequence, in order to secure sufficient funds to keep the league going, directors made a solicitation of all Birmingham merchants and a number of them have made significant contributions to our program.

The league ended the season with substantially less money than was on hand at the start of the year. As a consequence, even though the season is over, they are asking that the parents and friends of the boys in this program give consideration to making up the deficit incurred this year.

IT COSTS approximately \$30 per major league boy to keep this program going. We would sincerely appreciate all contributions which parents of the Babe Ruth boys feel capable of making. Checks should be made out to BIRMINGHAM BABE RUTH LEAGUE and sent to 1010 NORTH GLEN-HURST, BIRMINGHAM.

The Birmingham Eccentric

SPORTS

PAGE 8

SEPTEMBER 13, 1956

# WANTED

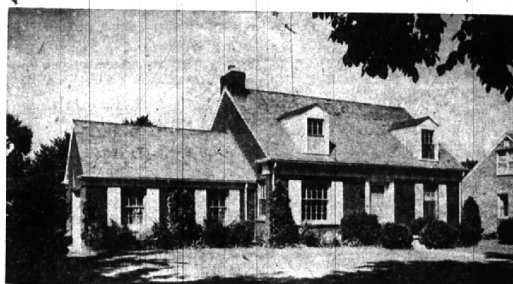
TWO or THREE ACRES  
in the  
Birmingham Area

For a Building Site for a New

# MASONIC TEMPLE

Phone Raymond E. Cecil. Midwest 7-0744

## AN OUTSTANDING STREET



All the lots on this street are 100 feet wide. Many large trees. The house has three large bedrooms and two baths plus a lavatory. Has full dining room and an enclosed porch. The kitchen has a disposal and dishwasher and the range and refrigerator are included. Large paneled recreation room with fireplace. It is vacant, so don't hesitate to call for an appointment.

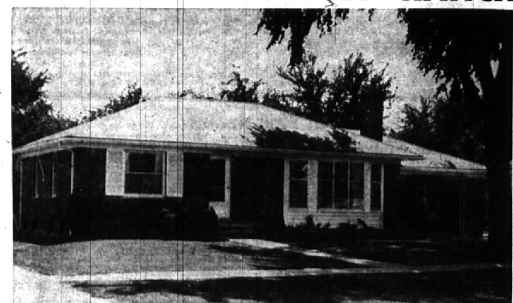
## WALSH, JAMES & WASEY CO.

Realtors since 1918

431 S. Woodward Ave.  
Birmingham

Midwest 4-6500  
Detroit phone JO 4-6033

## 3 BEDROOM FAMILY RANCH



2122 Dorchester

OPEN SUNDAY 2-5  
FOR YOUR CONVENIENCE

Shaded by beautiful big trees on a pleasant quiet street.

The present owner is being transferred and can give immediate possession.

A 75 x 126 lot insures plenty of room for the whole family to romp around and the yard is fenced for the little ones.

It is near the commuter for dad and the grade school is just 6 short blocks away . . . no heavy traffic.

DRIVE OUT EAST MAPLE TO EDENBOROUGH — TURN NORTH 2 BLOCKS AND THEN EAST 1/2 BLOCK . . . Watch For The Signs

## A. G. ELLIOTT & SONS

REALTORS — INSURANCE

815 S. WOODWARD, ROYAL OAK

JO 4-6311

LI 3-8500

**CUSTOM-BUILT BRICK HOMES**

YOUR PLAN OR OURS

**\$16,000 to \$20,000**  
INCLUDING LAND

As Low As \$3,900 Down

Model Open Daily 12 Noon to 5 P.M. IN ROYAL OAK — OUT WOODWARD TO 10 1/2 MILE ROAD (Nimrod Ave.)—East approximately 1 mile to First Street West of Corda Road.

**COLWELL HOMES**

4057 West Maple Road  
Birmingham MI 6-2022

**A. L. Doenges Co.**

Residential Builders

COMPLETE SERVICE  
DESIGN TO OCCUPANCY

Midwest 6-1600 — 4080 W. Maple  
Birmingham

## Lakefront Lots

- Upper Long Lake
- Hammond Lake
- Sodon Lake

**BLOOMFIELD TOWNSHIP**

SUBURBAN LAKE FRONTAGE is always in great demand, but the number of high and dry lakefront lots with loads of trees being offered for sale becomes smaller with each succeeding month. The Houseman-Spitzley Corporation has a selection of outstanding lakefront sites at reasonable prices in the Bloomfield Hills area. Live with the lakes at your doorstep and be out fishing 10 minutes after you get home. Write or call us as soon as possible for detailed information.

**BLOOMFIELD HILLS OFFICE, at Long Lake Road and Telegraph Road opposite Devon Gables. Phone MIDWEST 4-7422**

**HOUSEMAN-SPITZLEY CORPORATION**

66 WASHINGTON BLVD. BLDG., DETROIT 26, WO. 3-4816

## WE CAN DELIVER...

THE FABULOUS

# PONTIAC CHEFTAIN

FOR ONLY

# \$2134\*

\*A.D.P.

This car is equipped with . . . Deluxe Underseat Heater, Dual Barrel Carburetor, 205 H.P. V-8 Engine, Two-Tone Interior Trim, Dual Defrosters, Tubelock 730x15 Tires, and Directional Signals.

ACE WILSON'S

## ROYAL PONTIAC

818 North Main St. — Between 11 and 12 Mile Roads

## ROYAL OAK

LI 7-6100  
JO 4-6560