

To Resume Hearing On B'ham Rezonings

Hearing on rezoning of two Woodward lots to business C will resume before Birmingham city commission Monday night. The lots are on the corners of Redding road and Woodward. Residents are objecting to rezoning of several other lots, in the rear of the business property, for use as parking areas.

ELECTION NOTICE GENERAL ELECTION TUESDAY, NOVEMBER 6, 1956

To the Qualified Electors of the City of Bloomfield Hills, County of Oakland, State of Michigan:

Notice is hereby given that a General Election will be held on Tuesday, November 6, 1956, at the respective polling places hereinafter designated:

PRECINCT NO. 1: Bloomfield Hills City Hall, East Long Lake Road

PRECINCT NO. 2: St. Dunston's Playhouse, Lone Pine Road

For the purpose of Voting for the following officers Viz:

PRESIDENTIAL:
Electors of President and Vice-President of the United States

STATE AND DISTRICT
Governor — Lieutenant Governor — Secretary of State — Attorney General — State Treasurer — Auditor General — Representative in Congress — State Senator — Representative in State Legislature

COUNTY:
Prosecuting Attorney — Sheriff — County Clerk — County Treasurer — Register of Deeds — Drain Commissioner — Coroner — Surveyor

NON-PARTISAN:
Justice of The Supreme Court (To Fill Vacancy) — Judge of Probate — Circuit Court Commissioner
Also for the Purpose of Voting for the Following Propositions:

PROPOSED AMENDMENT TO THE STATE CONSTITUTION RELATIVE TO ADDITIONAL QUALIFICATIONS FOR MEMBERS OF THE STATE LEGISLATURE.

Shall section 5 of article 5 of the State Constitution be amended relative to requiring as qualification of any person for the office of member of the Legislature, that the person be at least 21 years of age and that he not have been convicted of subversion or of a felony involving a breach of public trust?

NOTICE RELATIVE TO OPENING AND CLOSING OF THE POLLS

Section 1. On the day of any election the polls shall be opened at 7 o'clock in the forenoon and shall be continued open until 8 o'clock in the afternoon and no longer. Every qualified elector present and in line at the polls at the hour prescribed for the closing thereof shall be allowed to vote.

Robert J. Stadler, City Clerk

Schone Outlines Financing of N. Evergreen

(Continued from Page 1, Sec. 1)

\$46,945.67, and the 1956 enlargement at \$150,000, or a total value of \$246,945.67. Since some modification of the present plant will be necessary before it can be used as a unit of an enlarged plant, and because some of the equipment in use would not be installed in present day construction, a sale price of \$520,000 was agreed upon.

Approximately seven acres of land will be necessary for future plant additions and enlargements. This land has been appraised at \$4,250 per acre, making a total sale price of \$549,750.

BLOOMFIELD township has participated with the city in the 1954 improvements and the 1956 enlargement of the plant, and has a substantial equity in it. This equity has been established at \$86,500.

Of the total price of \$549,750, the authority has agreed to pay one-half or \$274,875, on or before Jan. 1, 1957. The balance at 4% interest will be paid over 30 years in accordance with this schedule: \$5,000 on each Jan. 1, 1958 to 1962, inclusive; \$10,000 on each Jan. 1, 1963 to 1967, inclusive; and \$19,887.50 on each Jan. 1, 1968 to 1977, inclusive.

SIXTEEN PERCENT of these amounts will be paid to Bloomfield township until it has received a total of \$86,500, together with interest thereon, and the balance of \$463,250 will be paid to Birmingham.

To enable the authority to meet its Jan. 1, 1957 obligation, the four constituent municipalities have agreed to pay to the authority, as their share of the purchase price, these amounts:

Birmingham \$98,638.89
Bloomfield Hills \$84,338.88
Bloomfield Township \$118,666.97
City of Troy \$9,455.56

THE BALANCE of the purchase price shall be paid by the authority from revenues received by it from sewage disposal.

If at any time the authority should decide to abandon the plant, it is obligated to resell to Birmingham the real property at the sale price of \$29,750.

The authority shall have the right for a one-year period to remove any fixtures or chattels used in connection with the plant or any portion of any building located on said land, with the provision that anything remaining on the land after the expiration of the one-year period shall be considered a part of the land and shall be conveyed to Birmingham.

THE PROPOSED intercepting sewer system has been estimated to cost \$1,000,000. Plant enlargements necessary to serve the estimated 1970 population in this area will cost in excess of \$1,000,000.

To finance these sewers and plant enlargements, the authority expects to issue bonds backed by the full faith and credit of the four constituent municipalities. Each municipality would be responsible for a predetermined percentage of these bonds and would be expected to meet its obligations by any one or a combination of several methods.

Under the formula presently agreed upon, Birmingham's share would be 32.31%; Bloomfield Hills 9.47%; Bloomfield, township 36.19%; and Troy 22.03%.

THIS FORMULA is based on the estimated population connected to the sewers in the year 2,000; and one-half on an average estimated connected population to the treatment plant for the 14-year period 1957 through 1970.

It should be pointed out that the city probably would be involved in

at least equal expense were it to attempt to comply with the court order by itself. By actively supporting the authority, the city also gains an advantage in that sewerage treatment plants will not be built along the branches of the Rouge north of the city.

At least one small plant presently in existence will be abandoned and several small sewers which empty directly into the Rouge will be picked up by the interceptor system.

THIS WILL substantially reduce the amounts of raw sewage to be found in the Rouge River flowing through Birmingham.

Your city administration believes that the North Evergreen sewage disposal authority is the best answer to the sewage problems existing in this area. Your

vote at the Nov. 6 election to permit the city to sell its treatment plant and to join the North Evergreen district will help make the project a reality.

NEXT WEEK: In the concluding article, former Birmingham manager, Donald C. Ebert, now engineer-manager of two South Oakland municipal authorities, will discuss N. Evergreen's operational methods.

at least equal expense were it to attempt to comply with the court order by itself. By actively supporting the authority, the city also gains an advantage in that sewerage treatment plants will not be built along the branches of the Rouge north of the city.

At least one small plant presently in existence will be abandoned and several small sewers which empty directly into the Rouge will be picked up by the interceptor system.

THIS WILL substantially reduce the amounts of raw sewage to be found in the Rouge River flowing through Birmingham.

Your city administration believes that the North Evergreen sewage disposal authority is the best answer to the sewage problems existing in this area. Your

vote at the Nov. 6 election to permit the city to sell its treatment plant and to join the North Evergreen district will help make the project a reality.

NEXT WEEK: In the concluding article, former Birmingham manager, Donald C. Ebert, now engineer-manager of two South Oakland municipal authorities, will discuss N. Evergreen's operational methods.

at least equal expense were it to attempt to comply with the court order by itself. By actively supporting the authority, the city also gains an advantage in that sewerage treatment plants will not be built along the branches of the Rouge north of the city.

At least one small plant presently in existence will be abandoned and several small sewers which empty directly into the Rouge will be picked up by the interceptor system.

THIS WILL substantially reduce the amounts of raw sewage to be found in the Rouge River flowing through Birmingham.

Your city administration believes that the North Evergreen sewage disposal authority is the best answer to the sewage problems existing in this area. Your

vote at the Nov. 6 election to permit the city to sell its treatment plant and to join the North Evergreen district will help make the project a reality.

NEXT WEEK: In the concluding article, former Birmingham manager, Donald C. Ebert, now engineer-manager of two South Oakland municipal authorities, will discuss N. Evergreen's operational methods.

at least equal expense were it to attempt to comply with the court order by itself. By actively supporting the authority, the city also gains an advantage in that sewerage treatment plants will not be built along the branches of the Rouge north of the city.

at least equal expense were it to attempt to comply with the court order by itself. By actively supporting the authority, the city also gains an advantage in that sewerage treatment plants will not be built along the branches of the Rouge north of the city.

At least one small plant presently in existence will be abandoned and several small sewers which empty directly into the Rouge will be picked up by the interceptor system.

THIS WILL substantially reduce the amounts of raw sewage to be found in the Rouge River flowing through Birmingham.

Your city administration believes that the North Evergreen sewage disposal authority is the best answer to the sewage problems existing in this area. Your

vote at the Nov. 6 election to permit the city to sell its treatment plant and to join the North Evergreen district will help make the project a reality.

NEXT WEEK: In the concluding article, former Birmingham manager, Donald C. Ebert, now engineer-manager of two South Oakland municipal authorities, will discuss N. Evergreen's operational methods.

at least equal expense were it to attempt to comply with the court order by itself. By actively supporting the authority, the city also gains an advantage in that sewerage treatment plants will not be built along the branches of the Rouge north of the city.

At least one small plant presently in existence will be abandoned and several small sewers which empty directly into the Rouge will be picked up by the interceptor system.

THIS WILL substantially reduce the amounts of raw sewage to be found in the Rouge River flowing through Birmingham.

Your city administration believes that the North Evergreen sewage disposal authority is the best answer to the sewage problems existing in this area. Your

vote at the Nov. 6 election to permit the city to sell its treatment plant and to join the North Evergreen district will help make the project a reality.

NEXT WEEK: In the concluding article, former Birmingham manager, Donald C. Ebert, now engineer-manager of two South Oakland municipal authorities, will discuss N. Evergreen's operational methods.

at least equal expense were it to attempt to comply with the court order by itself. By actively supporting the authority, the city also gains an advantage in that sewerage treatment plants will not be built along the branches of the Rouge north of the city.

At least one small plant presently in existence will be abandoned and several small sewers which empty directly into the Rouge will be picked up by the interceptor system.

THIS WILL substantially reduce the amounts of raw sewage to be found in the Rouge River flowing through Birmingham.

Your city administration believes that the North Evergreen sewage disposal authority is the best answer to the sewage problems existing in this area. Your

vote at the Nov. 6 election to permit the city to sell its treatment plant and to join the North Evergreen district will help make the project a reality.

NEXT WEEK: In the concluding article, former Birmingham manager, Donald C. Ebert, now engineer-manager of two South Oakland municipal authorities, will discuss N. Evergreen's operational methods.

at least equal expense were it to attempt to comply with the court order by itself. By actively supporting the authority, the city also gains an advantage in that sewerage treatment plants will not be built along the branches of the Rouge north of the city.

Special Prices On the attractive Corinth pattern by CAMBRIDGE



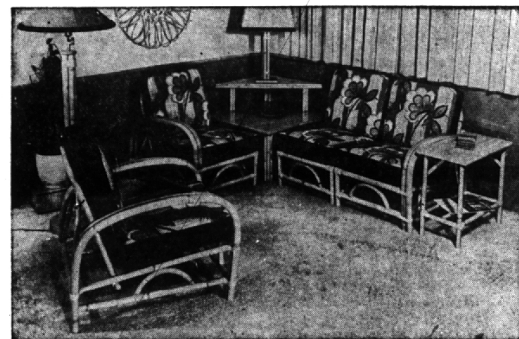
Large Oval Bowl	\$2.95
Triple Candlestick	\$2.95
3-Piece Mayonnaise	\$2.95
3-Part Relish Dish	\$2.95
Cake Plate	\$2.95

PONTIAC POTTERY

2099 S. Telegraph Phone FE 2-8642
2 Miles North of Devon Gables
on Telegraph 1/2 Mile North of Sq. Lake Rd.
Open Daily and Sunday 10-8

Want Ads cannot be accepted
after 5 p.m. each Tuesday

SAVE \$100.00



4-Pc. SOLID RATTAN GROUP
3 Pc. Sectional and
One Lounge Chair . . . **\$185.00**

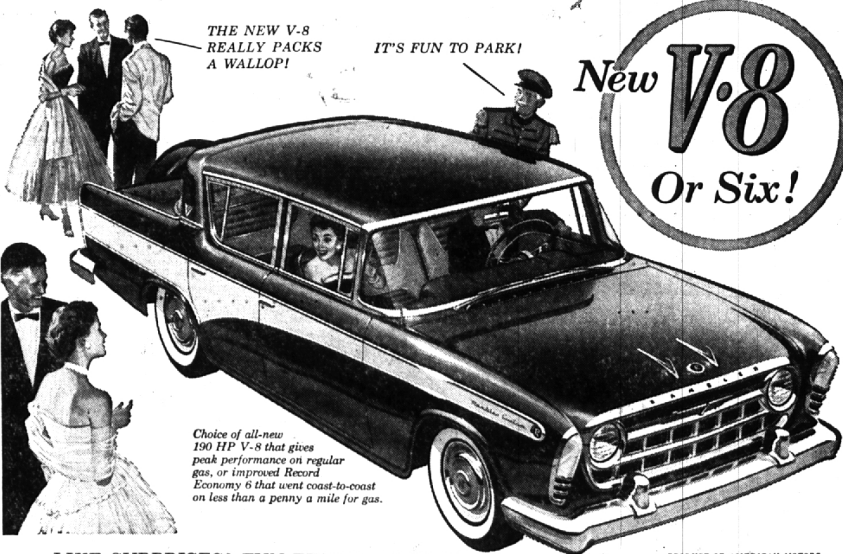
Lifetime Guaranteed Philippine Rattan.
Choice of fabrics. Reversible cushions.
Removable zippered cushions.

4-Pc. Group—Reg. \$285.00
3-SEAT SOFA . . . Reg. \$199.50 . . . \$129.95

LI 9-3655
North Woodward Furniture
Open Daily 10-9
4426 N. Woodward (3 blocks S. of 14-Mile)

Announcing Rambler For '57

With the Power and Economy News of the Year!



LIKE SURPRISES? FUN-TEST RAMBLER!

- TODAY's the day, the new 1957 Rambler's "coming out" party! Come and enjoy the happy surprises.
- See new cars built the modern way, with Single Unit Construction that gives big-car room and comfort . . . sports-car handling and maneuverability . . . plus dollar-saving economy!
 - Distinctively smarter styling—lower, sleeker lines—lavish interiors.
 - Room for six 6-footers in the compact car that parks easiest of all.
 - New performance and economy with 190 HP V-8 or thrifty 6!
 - Only low-priced car with longer, softer coil springs on all four wheels.
 - All-Season Air Conditioning, Hydramatic Drive, Airliner Reclining Seats, Twin Travel Beds.
 - Twice the safety with welded steel, box-girder frame that surrounds entire passenger compartment.
 - Fun-test the new 1957 Rambler. See the low price tags for the car that's most fun to drive . . . brings highest resale value.

Get a Lift
Out of Going . . . Go
Rambler

Smartest Style • Lowest Cost • Highest Resale Value
Tune in Disneyland—ABC Network. See TV listings for time and channel.

SEE THE NEW Rambler—AT YOUR DEALER NOW!

BIRMINGHAM NASH, Inc.

666 S. WOODWARD AVE.

MIDWEST 6-3900



TEAMWORK is the cornerstone and chief characteristic of the Eisenhower Administration. It has given to America its greatest security, its greatest period of prosperity and its brightest future. BACK THE IKE TEAM ON NOV. 6th.

WILLIAM S. BROOMFIELD
VOTE STRAIGHT REPUBLICAN

Oakland County Republican Committee
Chad Richie, Chairman—Jack Hayward, Treasurer