



Cunningham Joins Patten Company

Ray Cunningham, formerly of the Plymouth division of Plymouth-Chrysler Corporation, has joined the staff of the Patten Company, Birmingham, as an account executive, announces Myron Patten, president.

To his new post Cunningham brings a background rich in selling, merchandising and advertising experience. As merchandising and sales programs manager of the advertising department at Plymouth, he was responsible for planning and directing merchandising programs and sales promotions which included contests, sales aids and hand-in-glove working relationship with the public relations staff.

RAY CUNNINGHAM



Stites Appointed By Life Insurance

David C. Stites recently appointed a representative of The Life Insurance Company of Virginia. The company with home offices in Richmond, Virginia, is now celebrating its 85th anniversary.

Prepared by the company's extensive training course, Stites has obtained a license from the State of Michigan Department of Insurance.

Matriculated in the Birmingham school system. Graduated in 1946. He is living in the old parish house at 539 Bates, Birmingham, of the former United Presbyterian church of Birmingham. Grandfather, Rev. David H. Curry still actively serving the Presbyterian church as pastor of Southwest Presbyterian church, Philadelphia, Pa.

Stites was formerly assistant branch manager of Dearborn Motors Credit Corporation, Birmingham branch.

BIRMINGHAM CAMERA SHOP

168 So. Woodward
Phone Midwest 4-0510
If You Don't Know Cameras
—Know Your Dealer
19TH YEAR
SERVING BIRMINGHAM

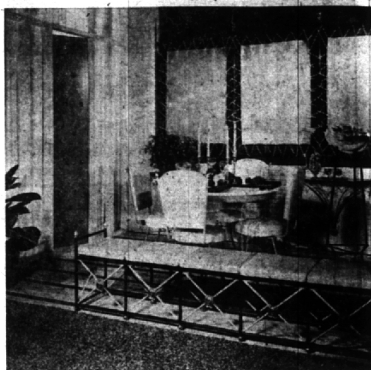
BUSINESS BRIEFS

BHAM ECCENTRIC
Thursday, October 11, 1956
Page 3

Leather Display At Scott-Shuptrine

Versatile modern upholstery leather is on equally good terms with high fashion and hard wear. A natural product, it is a natural for today's well-dressed homes and today's active way of life.

Outstanding examples of what leather can do and what can be done with leather are currently being shown (October 9 thru October 20) at Scott-Shuptrine, 1185 South Adams, Birmingham. This leather in Decoration Show is a sequel here to the exciting group of room settings recently introduced nationally by the Upholstery Leather Group, Inc.



C. Gruen Attends Shell Conference

Charles E. Gruen, 5666 Westwood court, Birmingham, Detroit division aviation sales manager of Shell Oil Company, will meet with the firm's other aviation managers for a four-day conference in October at the Westchester Country Club, Rye, New York.

The aviation managers, responsible for all of Shell's aviation sales activities throughout the United States, will review company policy and technical progress, and discuss the distribution and marketing of jet aviation fuels. Included in the four-day session is a tour of the newly opened New York City heliport.

Thousands of people read The Eccentric Classified Ads. So remember, if you want to sell that hard-to-get-rid-of article, advertise it in the Want Ad section of The Birmingham Eccentric.

NEW TROPICAL mildew-proof leather for indoor-outdoor use is featured in this penthouse terrace by Velma Kahane, A.I.D., in the 1956 Leather in Decoration Show. The wrought iron windbreaker with brass finials has conquistador gold leather lashed with white thongs. Carica green chairs have gulf stream blue leather upholstery, and pillows on the long bench alternate these colors with gold.

R. E. Cook Attends BMA Sales Meeting

Robert E. Cook, 1798 Winthrop, Birmingham, attended a three-state sales meeting for field representatives of the Business Men's Assurance Company at the Desher-Hilton Hotel in Columbus, Ohio in September.

Birthdays, anniversaries, guests, births, parties are all news—all the society editor about them.

J. C. Hay Speaks At PR Convention

John C. Hay, 6291 W. Surrey, Birmingham, president of the Michigan Bank will be a speaker at the annual convention of the Financial Public Relations Association to be held in Dallas, Texas, Oct. 7-11.

Hay, a former chairman of the staff relations committee of the association will present his talk "Employee Fringe Benefits."

The Michigan Bank president is a graduate of the school of financial public relations at Northwestern University, Chicago, Ill. He is former vice president and public relations director of the Michigan National Bank.



JOHN C. HAY

KRESGE'S



FLUFFY and WARM

Angora and Wool
CLIP CAP

This saucy cap fits any size, is really warm. Made of super soft 70% angora, 30% wool, it may be hand-washed with care. Snowy white. Only \$1 at Kresge's.

\$1.00

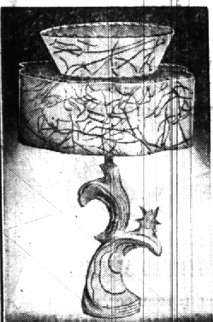
WEST MAPLE at HENRIETTA

KRESGE'S

Brighten Your Home...Our New Group of
Distinctive Lamps

\$2.99 to \$7.99

Now's the time to dress up your home with these exciting new lamps. Look expensive. Designed for light-saving. Complete with fabric or washable Fiberglas shades. From a wide selection at Kresge's.



28" Modern, with Starlight

Two-tone Rock-o-Stone base. Fiberglass shade. Use bulb plus starlight, or either alone. \$7.99



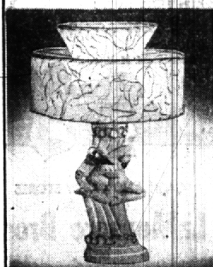
Ceramic Boudoir

Tri-tone, gold decorated base. Fiberglass flared 2-tier shade. \$2.99



Brass Base Vanity

Wire trim. Hand-laced decorated Fiberglass 2-tier shade. \$2.99



25" Ballerina 3-Way Lamp

Hand-decorated Rock-o-Stone base. Hand-laced, decorated two-tier Fiberglass shade. \$5.99



27" Brass Colonial

3-Way. Polished wood column. Print trim fabric shade. \$6.99



24" Black 'n' Brass

3-Way. Glass ball trim. 2-tier Fiberglass shade. \$5.99

WEST MAPLE at HENRIETTA in BIRMINGHAM



Put the heat on with MCGREGOR ANTI-FREEZE JACKET



- warmth without weight!
- wash-and-wear... just "DASH" it in a BENDIX!
- windproof nylon outside... warm nylon fleece inside!
- fabulous '56 colors!

Spectacular — the smart looks, light weight, warm comfort of the famous McGregor Anti-Freeze Jacket. 100% duPont nylon — colorful outside woven by Travis, fleecy inside by Princeton-Knit. As perfect for winter as duPont's Zerone or Zerex! Bendix-washable with a dash of DASH. Quick-start, non-sag Connatic Zipper! Flattering new colors—all precision-tailored by McGregor.

\$22.95

F Mulholland company
233 N. WOODWARD AVE.

CHARGE
ACCOUNTS
WELCOMED
WE
DELIVER

Fashion-wise DRESSES



IN A LOVELY WAY

Jean Lang creates the make-believe bolero to top a sheath dress. And fashions a back cuff to give you a touch of the excitingly different... flattering in so many ways. Crafted in Milken's 100% sheer wool worsted. Sizes 10 to 16.

\$29.98

jean Lang
ORIGINAL

STORE HOURS:
9:00 to 5:30
Daily
Open Friday Till 9

jean Lang
ORIGINAL



NEW FASHION HEIGHTS

Jean Lang creates the stunning... the knit midriff that disappears beneath a fold to give the favored bolero effect. A saucy collar and adorable scatter pins complete the picture. All wool Say-no-more jersey. Sizes 12 to 18.

\$29.98

F Mulholland company
233 N. WOODWARD AVE.