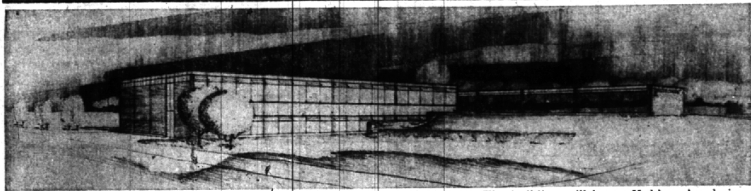


BUSINESS BRIEFS



NEW KUHLMAN headquarters—An architect's sketch shows the new \$500,000 general office building of Kuhlman Electric Co., now under construction near Birmingham, Mich., and scheduled for completion in

April 1957. The building will house Kuhlman's administrative offices, and release local space for expanding warehousing and manufacturing.

Page 4 THE BIRMINGHAM ECCENTRIC November 29, 1956

R. H. French Heads Insurance Buyers

The management of a corporation's insurance matters is fast becoming a recognized profession in the opinion of R. H. French, 1740 Graefield, Birmingham, this year's president of the Insurance Buyers Association of Detroit and insurance supervisor of Michigan Wisconsin Pipe Line Company. Corporations both large and small are realizing that an experienced insurance manager can save them

premium dollars, secure broader protection and effect better loss settlements. In September 1950, a handful of men sat down at a luncheon table in Detroit to discuss mutual problems and exchange ideas concerning corporate insurance. The result was formation of the Insurance Buyers Association of Detroit, which is now in its seventh successful year.

Similar groups have formed in other metropolitan areas and all are now affiliated in the American Society of Insurance Management. Nationally, the society is cooperating with colleges, universities and various trade groups in the common objective of better trained administrators to buy better insurance at the minimum cost.



R. H. FRENCH

Are you thinking of buying a new home? Then read the "For Sale—Houses" columns on the Classified Ad page of this week's Eccentric.

You, too will send your friends to
BIRMINGHAM'S SENIOR REALTORS
MAX **BROOCK** INC.
MI 4-6700

McCallum & Dean

THE ULTIMATE IN HI-FIDELITY EQUIPMENT

"A Vast New World of Listening Pleasure Awaits You."



Midwest
4-5230

Visit our
Hi-Fidelity Music
Demonstration Room

AMPEX
BELL
FISHER
GARRARD
SCOTT
REK-O-CUT
ELECTRO-VOICE
HARMON
KARDON
RIVER EDGE
ACOUSTI-CRAFT
WIRACORD
MAGNAVOX
PILOT
PRESTO
TURNER
V-M
G-E

409-411 East Maple

Birmingham



To Help You Remember . . .

NOT TO FORGET!

Countless opportunities present themselves when a kind remembrance will do much to create or maintain goodwill that is so essential to business.

An occasion for congratulations, a moment for well-wishers, a time for sympathy . . . these are a few of the situations requiring thoughtfulness on your part.

As Michigan's leading gift basket specialists, with years of experience in filling thousands of gift package orders for commercial accounts as well as individuals, we can suggest, prepare and de-

liver (anywhere in the United States or Canada, and most cities throughout the world) a beautiful gift basket of food package comprised of the finest fruits-in-season; food delicacies, wine, champagnes and liquors, cookies, candies or cigars. The next time you wish to convey a timely expression for a favorable impression . . . remember, a gift basket will . . . say it better!

WE ARE NOW MAKING DAILY DELIVERIES IN THE
BIRMINGHAM-BLOOMFIELD AREA
PHONE UNIVERSITY 2-6800

We Carry A Complete Line of

- GROCERIES
- FRESH FRUITS & VEGETABLES
- PRIME MEATS
- CHAMPAGNE
- WINE
- LIQUOR
- IMPORTED CIGARS

Market Basket Food

"FINE FOODS from the FAR CORNERS OF THE WORLD"

3205 W. McNichols (at Wildemere)

1 Block from U of D

A NEW *Free* SERVICE has been added
at **BIRMINGHAM CLEANERS**



YOUR CLOTHES
BEAUTIFULLY CLEANED

and returned to you
in a

**KORDITE CLEAR PLASTIC
GARMENT BAG***



THEY'RE REUSABLE

- Clear plastic lets you see what's in your closet
- Protects your clothes from dust, dirt, and wrinkles

*only at our
Woodward
Avenue
store

FREE

OF ANY ADDITIONAL COST

WE GIVE
S & H
STAMPS

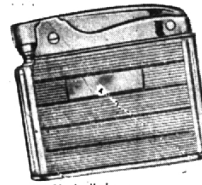
Birmingham
DRIVE-IN CLEANERS

WOODWARD AVENUE
AT ADAMS ROAD

A **THRIFTY TIP** from
SANTA!!....



KRESGE'S



Men's all-chrome
slim lighter.

Special Purchase!
POCKET LIGHTERS

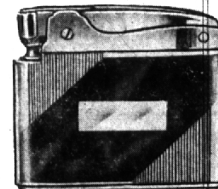
\$2.00 Values

87¢

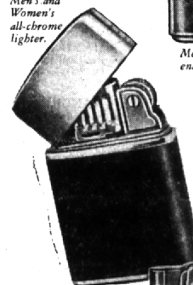
NO FEDERAL TAX



Men's and
Women's
all-chrome
lighter.



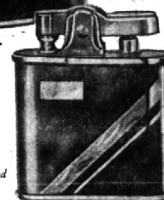
Men's chrome and
enamel lighter.



Windproof lighter.



Women's enamel
& chrome lighter.



Men's engraved
trim lighter.

- More than a dozen smart styles to choose from
- For men and women—everyone on your gift list
- All-chrome, and chrome with leather or enamel
- Dependable mechanisms . . . regular and windproof
- Buy now for Christmas

With Christmas near, this exciting bargain will make some of your gift shopping easy. See these beautifully made lighters, priced at less than half what you'd expect to pay. All gleaming and new, each in a box, some with fabric covers. Come early for the best selection . . .

WEST MAPLE AT HENRIETTA
BIRMINGHAM