

# BUSINESS BRIEFS

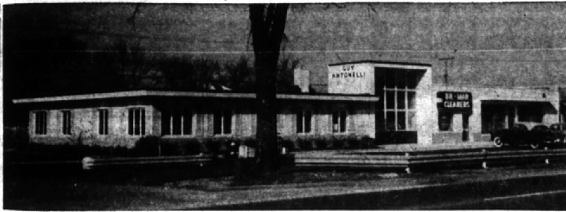
## Oswald Tower Joins President's Office

William A. McHattie, president of Michigan Seamless Tube Company, South Lyon, Michigan, has announced the appointment of Oswald Tower, Jr., of 812 Pilgrim street, Birmingham, to the president's office on special assignment. Tower joined Michigan Seamless Tube Company August 1, 1956 and was appointed plant superintendent December 1, 1955. He was formerly associated with the Chase Brass and Copper Company as vice president of their Tube Mill and

## Export Division Names John Haight

Appointment of John M. Haight, 4329 Meadowlark Court, Birmingham, as manager of personnel for Chrysler Corporation's export division is announced by Nicholas Kelley, Jr., division president.

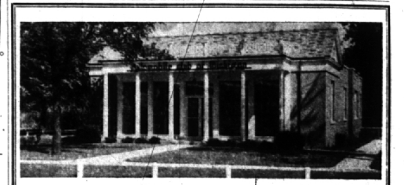
Haight was formerly assistant personnel manager for the Chrysler Division. Since joining Chrysler Corporation in 1947 as an attorney in central personnel, Haight has held a number of personnel positions. In 1954 he was appointed supervisor of employee services for Chrysler Corporation, and later that same year he was named staff assistant to the corporation's vice president-personnel. He was transferred to the Chrysler Division in 1955, and was appointed assistant personnel manager for that division in June, 1956.



**GUY ANTONELLI'S** new office building on Southfield road just north of 11 Mile in Lathrup Village, is slowly coming to life. Bil Mar Cleaners of Detroit and Dr. Gerald Fitzgerald, 28625 Eldorado, Lathrup, have opened offices. Walter D. Dennis of 18204 Magnolia will open up Dennis Drugs shortly and Finnell and Finnell Inc., an insurance firm has leased quarters. Two 150-square-foot offices and one 550-square-foot office are still unrented. Antonelli's office will be located in an office in the rear of the building.

## Holmes Advanced At GM Tech Center

John Q. Holmes, Rudgate Woods, Bloomfield Hills has been appointed director of the production engineering section at General Motors Technical Center. Holmes, a native of Springfield, Vt. is a mechanical engineering graduate of Worcester Polytechnic Institute, Worcester, Mass. He joined the staff of Delco-Remy division's process department as a designer in 1928, and during World War II he was assistant chief engineer and master mechanic of General Motors eastern aircraft division. Census bureau estimated in 1950 that two-thirds of the 48 million homes in the nation at the time had radios. Bureau no longer rides herd on radios. It's now making a count of the families possessing TV sets.



**YOUR LOCAL**

**Automobile Club of Michigan**

Birmingham Representatives:  
**DOUGLAS BROWN, Div. Mgr.**  
**JAMES MOFFAT, Rep. CRAMER WILSON, Rep.**  
**VERN HAAGENSTAD, Rep.**

**AUTOMOBILE CLUB of MICHIGAN**  
 275 S. HUNTER BLVD. BIRMINGHAM  
 Phone MI 6-4400  
 HOURS: 8:30-5:30 SAT. 8:30-9:00



**SEDAN DE VILLE**—The completely new styling of the 1957 Cadillac is readily apparent in this Sedan de Ville, the four-door hardtop introduced last year. The overall car is lower, the hood and rear deck are below the fender line and a re-styled Cadillac tail fin, somewhat reminiscent of the Eldorado fin, has been adapted. A new instrument panel, deep post steering column and wide selection of luxurious trims are featured in interior styling. Birmingham's Wilson Pontiac-Cadillac, Inc., dealer, 1350 N. Woodward will display the new models locally.

## New Subdivision In W. Bloomfield

Announcement of the offering of a new subdivision called Darb Lake Colony, in West Bloomfield, near Hiller and Commerce roads, is made by Elise and Leo McGough. The area will provide space for 74 homesites. Frontage on Darb Lake is reserved for the use of new residents. "There is fishing, swimming and boating available on the lake, which is held only for home-owners adjacent to the water," stated McGough. "Schools, churches, as well as good shopping areas, are close to the development. Carefully planned restrictions make this an ideal place, especially for the young married set." Homesites average one-third of an acre.

**From where I sit ... by Joe Marsh**

**There'll Always Be An "Expert"**

From where I sit, free advice is called "free" because it's usually not worth much. That little fellow was typical of the kind of "expert" who can't resist getting in dig—about how you work, what you wear, why you happen to prefer a glass of beer with your supper. People like that don't mean to be troublemakers... but the road to real intolerance is paved with their good intentions.

While I was there a fussy little guy—a spectator, like me—came up to the foreman on the job and started making all sorts of suggestions: "Shouldn't it go a little farther left there?... Why don't you bank the curves more?... Those ditches are awful close"... and so, on and on.

The foreman took it as long as he could, then asked politely, "How does she look for length?"

*Joe Marsh*

Copyright, 1956, United States Brewers Foundation

**SCREENS and STORM SASH**  
**FLUSH DOORS**  
 • Combination Doors and Windows  
 • Dishboard Doors and Drawers  
 • Plywood—Kiss Dried Lumber  
 1184 Grant MI 4-0424  
**WOODCRAFT CO.**

**THEY'RE BETTER**

**TIRES and BATTERIES**

**Firestone**  
**BOB ADAMS**  
**SHELL SERVICE**

MI 4-9750  
 Hunter at Maple

**GREETINGS & GIFTS**  
 are brought to you from  
 Friendly Neighbors  
 & Civic & Social Welfare Leaders through

**WELCOME WAGON**  
 On the occasion of  
 Change of residence  
 Arrivals of Newcomers  
 to Birmingham

**MRS. H. WALES PRICE**  
 Midwest 4-0516  
 (No cost or obligation)

**you get Fuel Savings up to 40%**

Fiberglas Blanket, 1 1/2 in. .... 5c sq. ft.  
 Balsam Wool, Standard ..... 6 1/2 c sq. ft.  
 Aluminum Foil ..... from 1.6c sq. ft.  
 Zonolite Pouring ..... bag \$1.55

**LET US FIGURE YOUR REQUIREMENTS—STOP IN TODAY AND START SAVING!**

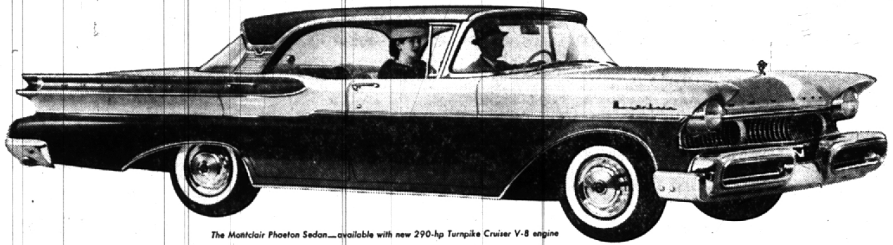
**Birmingham Lumber AND SUPPLY COMPANY INC.**  
 1025 HAYNES STREET  
 PHONE MI 4-3636

Between Hunter & Adams—5 Blocks South of Maple  
 Hours: 7:30 to 5:00 Mon. thru Fri.; 7:30 to 1:00 Sat.

**SEE IT TODAY!**

# DYNAMITE FROM DETROIT

Will influence the shape of cars for years to come! Here it is...Mercury for 1957...and it's a bombshell that will rock the industry. The first dream car you can own, not just look at. Dream-car new in styling, ride, power, and features. Dramatically different from Jet-Flo Bumpers to V-angle tail-lights. And bigger in every important dimension—length, width, and wheelbase—headroom, leg room, and shoulder room. It's dynamite—a totally new car that brings the dream world of tomorrow to radiant reality today.



# THE BIG M FOR '57

with DREAM-CAR DESIGN

Everything that counts in a car has been changed dramatically! Mercury for '57 presents: Dream-Car Design · Biggest size increase in the industry · Exclusive Floating Ride · New Keyboard Automatic Transmission Control · New 255 and 290 hp V-8 engines · Exclusive Power-Booster Fan · Dream-Car features everywhere you look. Stop in...see how The Big M outdates them all.



**SEE THE BIG, BIG, BIG M AT YOUR MERCURY DEALER'S**

Don't miss the big television hit, "THE ED SULLIVAN SHOW," Sunday evening, 8:00 to 9:00, Station WJBL, Channel 2.

# BOB FROST Inc.