



PETER D. Ladd (left) and **Willis W. Sawyer** (right) are completing basic military training at Lackland Air Force base, San Antonio, Texas. Their parents are Mr. and Mrs. F. Hartwell Ladd, West Maple avenue, and Rev. and Mrs. Willis H. Sawyer of Brown street.

Replica of River Boat to Float On Kent Lake

The "Island Queen," 60-ft. replica of a Mississippi stern-wheeler, started hourly cruises on 120-acre Kent Lake in Kensington Park Saturday.

The paddle boat will churn on 50-minute voyages in the island-studded lake hourly from 12 noon to 6 p.m. Before 12 and after 7 p.m., she will be available for charters.

She will be manned by a crew of two, with Capt. Robert Watts of Milford at the wheel.

Powered by a single diesel engine turning the eight-ft. paddle wheel, the "Island Queen" will furnish plenty of genuine river boat atmosphere, even to recorded music like "Waltz" for the Robert F. Lee and Moonlight Bay.

THE BOAT will accommodate 55 passengers. When fully loaded, she draws only 11 inches of water. The cruising speed is five to seven miles an hour. Her dock will be the park's boat launching dock near the main entrance from Grand River (US-16) near New Hudson.

The "Island Queen" will be in operation Saturdays and Sundays until June 11, when daily operation will begin.

Built in Saugatuck, the boat had two successful seasons cruising the Kalamazoo River and Lake Michigan before being purchased by the Huron-Clinton Metropolitan Authority for Kensington Park.

"We feel we are adding something new and different to the metropolitan recreation picture by introducing the "Island Queen," said Kenneth L. Hallenbeck, director of the five-county park and parkway agency.

RATES FOR "Island Queen" cruises will be fifty cents for adults and twenty-five cents for youngsters. Charter rates are ten dollars an hour for up to 55 passengers. Arrangements for charter may be made through the H.C.M.A. office, 1750 Guardian Building.

South Lashlaw said Kent Lake's two bathing beaches, Martindale and Mark, are open Saturdays and Sundays until June 11, the start of daily operation.

Murphy Is Editor

Dale Murphy has been appointed chapter editor of the Gamma Phi chapter of Delta Sigma Phi fraternity at Alma college. He is a son of the James V. Murphys of Kennasaw avenue, Birmingham.

RENT! A New Portable Typewriter

(all makes available)

\$5 per month



Birmingham Printing's Rental-Ownership Plan!

Up to 3 mos. Rental Applied on Purchase! Should you decide to buy—Pay Balance \$5.00 Mo.

Used Standard Machines Also Available

Free Delivery — Free Typing Instruction Book — Carrying Case Included

Birmingham Printing and OFFICE EQUIPMENT Co.
369 EAST MAPLE AVENUE MidWest 1-1710

HOUSE CLEANING

It won't be finished in my life time unless I find a reason. To Throw out all my treasured trash—Not put it back each season.

Nova Whitfield
Bloomfield Hills, Mich.

TUCKS TO SLIM

Jean Lang uses tucks to slim the hip line of this youthful Egyptian cotton voile dress. And for excitement, sparks it with rhinestone and pretend-pearl buttons. Always ready to wear it's wrinkle-shedding and tubbable. Sizes 12 to 18

\$27.98

jean Lang ORIGINAL

STORE HOURS:
9:00 A.M. to 5:30 P.M.
Open Friday Evening

The F. J. Mulholland Company

233 NORTH WOODWARD AVE.

It adds that dreamy extra something!

maidenform PRE-LUDE* SIX-WAY

...now lightly lined with foam rubber!

Here's a brand-new and beautiful version of Maidenform's wonderful Pre-Lude Six-Way, the bra you can change and rearrange by simply moving or removing the easily-adjustable straps! Now, Maidenform fashions this fabulous figure-maker with the same under-and-uplift construction... but... there's an added something! A light foam rubber lining adds the illusion of maximum curves to modest contours! White embroidered broadcloth, AA, A, B and C cups 3.95

The **F. J. Mulholland Company**
233 North Woodward

Staff Listed For Cranbrook Theatre School

Nan Adams, daughter of James L. Adams of Bloomfield Hills, has rejoined the staff of the Cranbrook summer theatre school after an absence of several years.

Nan, a graduate of the speech school at Northwestern University and a graduate student at the University of Michigan, will direct and teach in the senior division.

Added to the staff is Patricia O'Connell of Birmingham, who will be assistant and swimming instructor, and Peter Schmidt, technical assistant.

All theatre school places in the junior and intermediate divisions have been filled for the 1956 season. Some places are still open in the senior divisions, 14-16 and 16-21 age groups, and in the pre-professional division, the 21-24 year group. Four working scholarships for men are still open.

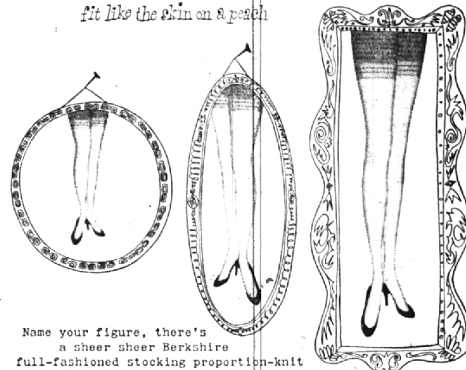
OTHER BLOOMFIELD Hills staff include Sara Smith, senior director and teacher of speech; Robert Usellis of Cranbrook faculty, senior assistant; Malene Usellis, senior assistant; Nancy Alice Worthington, senior assistant and swimming instructor; and Peter Schmidt, technical assistant.

You will find many bargains in The Eccentric Classified Columns.

Were a whiz at figures!

Berkshire's full-fashioned proportion knit stockings

fit like the skin on a peach



Name your figure, there's a sheer sheer Berkshire full-fashioned stocking proportion-knit to fit you! Because Berkshires fit so perfectly they make legs look slimmer; are much less apt to snag. With famous Nylace Top and Toe-Ring run-stoppers. Short, medium, long lengths. \$1.35 to \$1.65

THE F. J. MULHOLLAND CO.

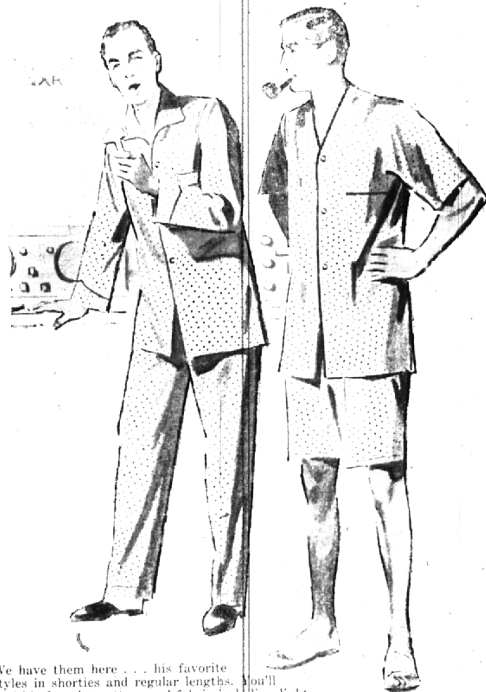
Charge Accounts Welcomed

We Deliver

FATHER'S DAY—SUNDAY, JUNE 17

You Can't Help But Please Dad If You Give Him Pajamas

by WELDON



We have them here... his favorite styles in shorties and regular lengths. You'll find his favorite pattern and fabric including light-weights for summer. Come and pick from numerous colors.

All Sizes from **\$2.98** to **\$5.98**

MULHOLLAND'S

Men's & Boys' Department

233 North Woodward

Bermuda Shorts

SUNTAN COTTON BY MANHATTAN \$7.50

COTTON CORDS—\$5.95

VISCOSE & RAYON \$4.95 and \$5.95

BERMUDA HOSE

Flannel, and plaid in wool, cotton or nylon. \$1.50 up



TASTEFUL TOGS FOR DAD'S Leisure Life!

Sunday, June 17 is Father's Day

SHIRTS for DRESS & PLAY

Short sleeve white shirts worn for business with a necktie and open at the neck for leisure.

\$3.95 and \$4.95

COLORED SPORT SHIRTS

Plain colors and patterns

\$3.95 to \$16.95

SLACKS

Palm Beach \$12.95

Wool & Dacron \$16.50

Tropical Worsteds \$19.50

NECKWEAR from \$2.50

Initialed HANDKERCHIEFS \$2.50
Box of Three—

Dickinson's

Waheek Building — Birmingham

Saginaw at Lawrence Pontiac