

**S A L E S**  
*The Magnavox*  
 television - radio - phonograph  
**McCallum and Dean**  
 409-411 E. Maple MI 4-5230

**SHEER PERFECTION**



IN A PORTRAIT BY...  
**bill williams** LI 3-4180  
*Photographer*  
 1107 Crooks Rd. at Main Royal Oak

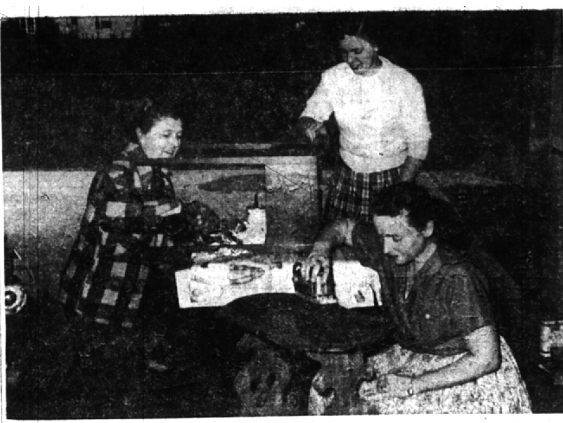
**GIVE DAD Gondola Guards**  
 COOL, CONTINENTAL PAJAMAS BY **PLEETWAY**

Here's the Continental influence in pajamas—smart guardian trim on a pattern that suggests a whirling breeze. And—even more enjoyable to Dad—these pajamas show the influence of Pleetway's exclusive comfort features—so he'll sleep soundly no matter how stifling the night. We have Gondola Guards in lightweight broadcloth, fine batiste and rayon-nylon cloth. Sizes A, B, C, D. Icy tones of blue, beige, maize and green. Regular length 5.00. Short-sleeve, knee-length 4.00.

Only Pleetway Pajamas Have All These Comfort Features:

- UNDERARM PLEAT**—No lining of chest or armholes. Piece of rayon in chest and armholes. U.S. Pat. No. 1,973,419.
- ADJUSTABLE WAIST**—No slip, no strings! Easy size adjustment, plus elastic inserts. Easy tight!
- BALLOON SEAT**—Daddy's business seat! eliminates creases, causing extra wear. Comfort pleat U.S. Pat. No. 1,786,524.

As Advertised in ESQUIRE  
**PECK'S MEN'S WEAR**  
 108 S. Woodward • MI 4-7724



USING A PUTTY KNIFE to remove softened old varnish is (from left) Mrs. Wilbur E. Saylor, Mrs. Mary A. Hixon, home demonstration agent, sanding, and Mrs. Harry M. Clark, using the electric sander.

**LEGAL NOTICES**

**CITY OF BIRMINGHAM, MICHIGAN NOTICE TO PROPERTY OWNERS**  
 Park Street Pavement—Oakland to Field The City Commission of the City of Birmingham will meet Monday, June 4, 1956, at 9:00 P.M. in the Commission Room in the Municipal Building to consider any objections to the construction of certain improvements on Park Street from Oakland to Field, together with grading, drainage and other appurtenances necessary for a complete pavement.

**PARK STREET PAVEMENT—**  
 MAKING THE CITY LIGHTS  
 consisting of a recent concrete pavement 25 feet in width, back to back of curb with integral curb and cross section of 6" x 6" x 6" extending on Park Street from Oakland north to Field, together with grading, drainage and other appurtenances necessary for a complete pavement.

The Commission proposes to create a special assessment district to defray the cost of this construction and said special assessment district shall consist of the following described property:  
 Lots 12 and 13  
 Lots 14 and 15  
 Lots 16 to 18 inclusive  
 Lots 19 and 20 inclusive

Notice of creation of said district of the project as filed with the City of Birmingham for publication by the public. Individual assessments are not now available. They will be computed by the assessor after June 4, 1956 if the necessary for this improvement is completed by the Commission; and there will be a public hearing scheduled for the purpose of reviewing the assessments. May 24, 1956.  
 IRENE E. HANLEY, City Clerk.

**NOTICE OF SALE OF GOODS IN STORAGE**  
 TO WHOM IT MAY CONCERN,  
 Take notice that Birmingham Moving & Storage of the City of Birmingham, Michigan will sell at public auction 1201 14th Street, Birmingham, Michigan at 10:00 A.M. on the 19th day of June 1956 the stock and other charges due as provided in completed Law Title Section 144-17-1516.  
 Mrs. P. J. Zand, 15884 Lindsay, Detroit, Michigan—Household furniture, and other goods.  
 J. H. Webb, 1044 Stratford Lane, Bloomfield Hills, Michigan—Household goods.  
 Earl Randall, Jr., 754 Shearwater, Birmingham, Michigan—Household furniture.  
 Dale Baker, 20485 Marshall, Royal Oak, Michigan—Household furniture.  
 Harold Watts, 1608 Farmington, Royal Oak, Michigan—Household furniture.  
**BIRMINGHAM MOVING & STORAGE**  
 1515 Astor Bldg., Birmingham, Michigan (LI-17-1516)

**CITY OF BIRMINGHAM, MICHIGAN NOTICE OF SPECIAL ASSIGNMENT**  
 No. 438

Lot 15, Block 1, Subdivision 1, City of Birmingham, Michigan, and the Special Assessment Roll No. 100, for the purpose of defraying the cost of construction of improvements, to be hereinafter known as, "Lot 15, Block 1, Subdivision 1, City of Birmingham, Michigan." The said lot is situated on the east line of the street known as Lincoln, between No. 11 together with grading, drainage, sewer and other appurtenances necessary for a complete pavement, to be now on file in my office for public inspection. Notice is hereby given that the Commission of the City of Birmingham will meet in the Commission Room in the Municipal Building in said city on Monday, the 4th day of June, 1956, at 9:00 p.m. to review said assessment, at which time and place opportunity will be given to all persons interested to be heard.  
 Dated: May 24, 1956.  
 IRENE E. HANLEY, City Clerk. (LI-17-1516)

**Homemakers Learn To Refinish Furniture**

Through the Cooperative Extension Service of Michigan State University, many homemakers in the area are learning how to refinish furniture.

At a four-day workshop recently, Mrs. Mary Hixon, Oakland County Home Demonstration Agent, who lives at 739 North Eton road, Birmingham, assisted the women in renewing several old chairs, tables, and chests which now are almost more beautiful than when new.

Mrs. Harry M. Clark, Jr., 25065 Larkin avenue, Southfield, opened her large home and garage for the classes. Attired in old working clothes and gloves, the women proceeded to remove the old finish from the wood by using paint and varnish remover and scraping with a wide putty knife. Then came the patient sanding, first with medium, then very fine sandpaper until the surface was as smooth as glass.

DEEP SCRATCHES or holes were filled with melted shellac stick or plastic wood. Dents were easily raised by using a damp woolen cloth and a warm iron. After the surface was sanded smooth, the sand dust was removed with a cloth moistened in turpentine or alcohol.

Some furniture was given a coat of oil stain to obtain the desired color.

All of the women at the workshop used a good penetrating seal to fill the grain of the wood and give a natural finish. After two coats of wax, the furniture had a soft, satiny sheen. Mrs. Wilbur E. Saylor, 1535 Island Lake lane, Bloomfield township, refinished some dining-room chairs with the penetrating seal over three years ago and they still don't show any scuffs or scratches.

Another beautiful finish may be obtained by rubbing in a warm mixture of 2-3 boiled linseed oil and 1-3 turpentine. This takes from four to twelve coats, and requires much patient polishing with a woolen cloth between each coat. A free bulletin "Refinishing Furniture" may be obtained by writing to Mrs. Mary Hixon at the County Extension Office, 1500 West Boulevard, Pontiac.

**PUBLIC SALES**  
 Not an Auction—All Items Priced

**Household Furnishings**

**Saturday, June 2nd, from 10 a.m.**  
**Mr. & Mrs. C. Logomarsino**  
 1052 Yorkshire Road  
 Grosse Pointe Park

**Sunday, June 3rd, from 10 a.m.**  
**Mr. & Mrs. R. K. Floyd**  
 33742 W. Twelve Mile Rd.  
 (West 300 yds. of N.W. cor. of 12 Mi. & Farmington Rds.)

SALES CONDUCTED BY  
**H. O. McNIERNEY**  
 Appraiser 424 Book Building  
 Woodward 1-9085

**IT'S fun TO BUILD TO USE**  
 AN OUTDOOR FIREPLACE

It's fun to build your own fireplace—choose your own materials, your own design. So put the whole family to work building a fireplace around this all-metal unit. And when it's finished, think of the fun of cooking steaks, chops, hamburgers! The unit is built to last for years. Doors are of cast iron. Grates movable for either charcoal or wood. It's low cost! Stop in and see it.

**SMITH-MATTHEWS**  
 FOUNDRY CO.  
 6636 CHARLEVOIX  
 DETROIT 7, MICHIGAN

AT A TEA HONORING high school senior girls who will attend the University of Michigan next year, discussing college plans with the dean of women at the U of M, Miss Deborah Bacon, seated center are (from left) Sally Schlafer and her mother, Mrs. Mary T. Schlafer, Mrs. Richard Spiess and daughter, Mary Spiess.

On the Shore of Lake Michigan  
**The OLD TRAIL INN**  
 Harbor Springs, Michigan  
 WILLIAM PASCHEDAG, Owner & Manager

A Modern Inn on the shore of beautiful Lake Michigan with the hospitality, atmosphere, cuisine and friendliness of an old Fashioned Inn

**ATTRACTIVE GUEST COTTAGES—AMERICAN PLAN**  
 Family Resort—Honeymooners Welcome  
 Rate \$50.00 Up

Private Beach—Attractive Playgrounds  
 Harbor Springs 1181-82  
 The Old Trail Inn  
 Open June 16 thru to September 9  
 Recommended by "Gourmet" of New York

**TWO EXQUISITE PATTERNS by STANGL**

**Thistle**  
 Colorful Thistles, hand-carved, hand-painted and glaze-protected against losing their sparkling beauty. A delightful pattern to own or give. 16-piece starter set and open stock.

**Blueberry**  
 Stangl's bright Blueberry in the new coupe shape, with a broad band of sunny yellow. Colors permanently protected against fading or washing off. 16-piece starter set and open stock.

12 1/2" Chop Plate	\$5.50	8" Plate	\$1.50
Sugar and Cover	\$2.50	Creamer	\$2.00
8" Round Vegetable	\$2.75		

**PONTIAC POTTERY**  
 2099 S. Telegraph Phone FE 2-8642  
 2 Miles North of Devon Gables on Telegraph 1/2 Mile North of St. Lake Rd.  
 OPEN DAILY AND SUNDAY 10-8

**Bedding Needs**  
 ...at prices you can afford

For A Limited Time the outstanding **SEALY CONCORD**

Box Edge Innerspring and Matching Box Spring

Your first opportunity to have Sealy Quality and Guarantee at this low price!

**BUY WHAT YOU NEED... USE OUR BUDGET OR LAYAWAY PLAN**

**\$29.50** each

**ELECTRIC CLOCK FREE!**  
 You Will Have to Hurry

**8 PIECE MODERN DESK OUTFIT**

- a beautiful 6-drawer limed oak 40" desk with mar-proof top
- matching chair
- 6-piece blotter and pen set
- modern desk lamp

PLUS SELF-STARTING ELECTRIC CLOCK with Westinghouse Movement

**Har Trom HI-WAY FURNITURE MART**  
 1532 WOODWARD AVE., BIRMINGHAM, MICH.  
 4 BLOCKS N. OF 14 M.L.R.D. ... Midwest 4-1410  
 Open Thursday, Friday and Saturday Till 9 P.M.  
 EASY TO PARK... JUST DRIVE UP