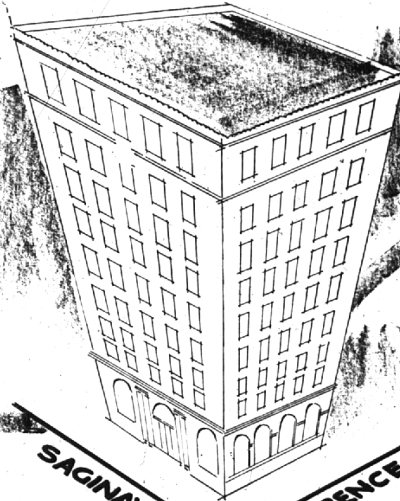


WHERE THOUSANDS SAVE MILLIONS

The Community National Bank

Expands



PERRY at GLENWOOD

Our conveniently located Perry St. Branch offers one of our largest parking lots.

W. HURON at TILDEN

Construction completed with floor space tripled . . . tellers cages increased from 7 to 12 . . . 2 additional, modern styled drive-in windows . . . large parking area.

UNION LAKE

Plans are in progress for a modern bank with all banking services available.

WALLED LAKE

Construction completed . . . floor space doubled . . . increase of tellers cages from 5 to 11 . . . addition of drive-in facilities . . . enlarged parking area.

KEEGO HARBOR

Construction nearly completed to double floor space . . . increase of tellers cages from 6 to 13 including drive-in facilities . . . enlarged parking area.

BLOOMFIELD HILLS OFFICE



Member of
Federal Deposit
Insurance Corporation

The Bloomfield Hills office will soon be erected on West Long Lake Road opposite McManus, John & Adams—a modern bank building with a spacious lobby . . . eight tellers including drive-in facilities . . . large safe deposit vault and large parking area to provide Bloomfield hills and surrounding area with the most modern and efficient banking service.