

THE HEART OF AMERICA STILL BEATS

To the Christian world, there is no such thing as being forgotten, without hope of improvement...



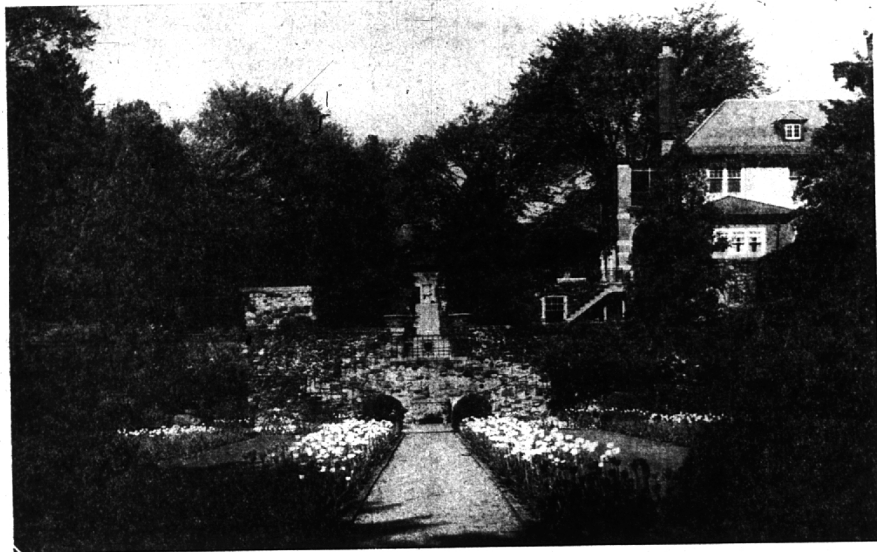
At Washington Dinner

CADET LT. JOYCE ANN KERLEY, of 1269 Pierce, is told by Colonel Walter C. Grant, (left), Michigan Wing Commander of the Civil Air Patrol...



Top Cadet

JOSEPH W. CHOPE holds the DePauw University President's award he received at recent ceremonies at the Green-castle, Ind. college.



A Little Bit o' Holland

YES, YOU REALLY CAN "tiptoe through the tulips". There are thousands of them on display every weekend in the gardens and park...



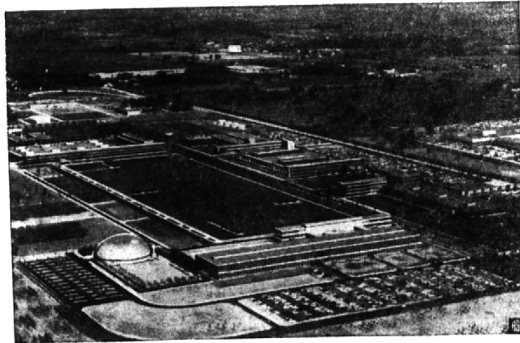
In Texas

AIRMAN THIRD class Charles W. Stocker, son of Mr. and Mrs. Willard Stocker of Cole street, Birmingham...



How's My Score?

CHECKING over their scores in the first week of play in the Springdale ladies golf league are two members of Thursday's pairings.



General Motors Dedicates Tech Center

GENERAL MOTORS dedicated its fabulous new technical center just north of Detroit in impressive ceremonies last week. Hailed as one of the world's outstanding industrial research centers...

Election Slated At Annual Meet Of Polio Chapter

The annual meeting of the Oakland county chapter, the National Foundation for Infantile Paralysis will be held on Thursday, May 24...

Carl W. Donelson, Pontiac Chairman of the chapter, will preside at the meeting at which members of the executive committee for the ensuing year will be elected.

Walkers Get Help

A four-way stop will be created at Lincoln and Eton, primarily as a pedestrian aid to those going and coming from Eton park, which the city is rapidly developing.

PATIO PATOIS

Patio: An inner court or yard open to the sky. And that ain't all! It would be a mighty unusual person whose patio and swimming pool was not "open to his friends" and, yes, even relatives.

Since our primary aim is to help you to the utmost enjoyment of yard and garden we must call your attention to the beautiful and sturdy and durable

REDWOOD FURNITURE

we have acquired for this purpose. Some pieces are on hand and any of it as shown in the catalogue is available in a few days.

Some of the items in the shop are: — THE CAPTAINS CHAIR (\$15.00): It fits you like a — it fits you.

LAZY SUSAN TABLE (\$63.11): It is 54" in diameter, 30" high and the turn-table is 27" in diameter. With this you may be able to grab the last hot bun before Junior absentmindedly sticks out a paw for it.

CURVED BENCHES for it are 42" long and cost a piddling \$15.33 each.

BARBECUE TABLE-BENCH (70" is \$33.77—94" is \$41.11): While this single unit makes a fine comfortable bench and a half-baked table—two of them, done-doo-doo (back to back, that is) make a splendid table. If you don't buy this the Museum of Natural Mistakes has already asked for it.

AND SO ON AD INFINITUM

One of our pleasant fixtures is really no fixture at all. Mrs. Jane Herrick, our Secretary and Treasurer, and known by many as The Voice, is leaving us to go and live at Laguna Beach, California with her family. Imagine that!

In most patios there is crabgrass—and around the crabgrass there is often lawn. To help you promote the greensward part of your patio to the exclusion of the crabgrass we enumerate here with the most progressive procedure (and this goes for all lawn areas outside of the patio also):

- 1. Five weeks after you applied your usual meager application of WOODRUFF'S LAWN SEED you should apply LIQUID CHLORDANE so that the top 1/2 inch of soil is saturated. This will kill a lot of crabgrass as the shoots try to emerge.
2. Any crabgrass plants that germinate before you can apply the chlordane will have to be removed by hand or by the use of CRAB-NOT or CRAB-NOT-SPECIAL or sodar or such applied directly to the plants.
3. At any time 5 weeks AFTER the sowing of lawn seed you may effectively use the CHLORDANE treatment to reduce the number of C.G. plants that will try to germinate in June, July and August.

- (4. SPECIAL) We implore you to give heed to: — GOOD MOWING PRACTICES GOOD WATERING PRACTICES GOOD FERTILIZING PRACTICES

These three practices constitute the PRIMARY crabgrass control measures.

If you don't want RUTABAGAS in your lawn, don't plant them.

If the information given to you by one of our staff is at variance with that given by another member you are mistaken or WE SHOULD KNOW ABOUT IT.

Because of the slightly adverse weather we have been reluctant to try to suggest garden improvement aids. Next week we will go to work on numerous details. At present we will confine ourselves to the foregoing.

PLUS: — FRUIT TREE SPRAYING: Use Bonide's TREE TOX — frequently. Wet top and bottom of all leaves.

ELM-TREE SPRAYING: — Use Bonide's DD-IDE. 1 Pint to 20 pints of H2O.

BUGS of all kinds—particularly on evergreens. Use MALITHOX.

RUTABAGAS: — Use Hammond's Weed Killer.

DANDELIONS et cetera: — Use any good 2-4-D. (Much better than the powders mixed with 2-4-D).

CHICKWEED: — Use CWK. And for Pete's sake put it on exactly in accordance with the instructions.

LAWN: — RAISE THE MOWER TO A FULL TWO (TO) (TWO) (2) (TU) (TEW) INCHES.

GARDEN: — Plant

- TUBEROSES LILIES PEACOCK ORCHIDS PEONY ROOTS DELPHINIUM PLANTS GLADIOLUS STRAWBERRY PLANTS CANNAS & CALLAS PERUVIAN DAFFODILS SEEDS

By Patio Pete, the Planter

McCLELLAN-BALL CO.

YARD GARDEN SUPPLIES FARM KENNEL BIRMINGHAM, MICHIGAN

Phone MI 4-1133

159 Brownell St.