

'How To' Facts Easily Found

The current surge of do-it-yourself activity, which has worked miracles in improving homes from

coast to coast, has given rise to a tremendous demand for "how-to" instructions, plans and information.

SPRAYING

ELM TREES

Shade Trees, Shrubs, Fruit Trees and Orchards

Lawn spraying for weed control. Also spraying for mosquito control.

Michael J. Jasso

40 Biltmore Phone Birmingham MUberry 9-2700

Newspapers have done much to meet this demand with popular do-it-yourself and home decoration features, as have many magazines. Families who plan home-improvement projects have countless sources for the necessary information. The Douglas Fir Plywood Association of Tacoma, Wash., for example, sells complete plans for plywood boats, furniture and built-ins through retail lumber dealers. Many lumber dealers also carry patterns, which guide the craftsman in making everything from simple plywood benches to entire houses.



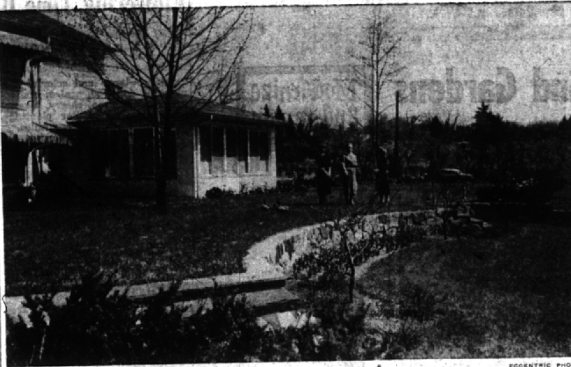
VISIT OUR KITCHEN PLANNING CENTER

Come in today and let us help you plan that dream kitchen you've been wanting. You'll find, here, lovely Youngstown Kitchens, cabinet sinks, cabinets and accessories of sparkling, white-enamelled steel or your choice of 3 gorgeous colors at no extra charge and a plan that makes owning a kitchen easy! There's no charge for this unique kitchen planning service. Come in and see about it today.

Youngstown Kitchens

Hawthorne Electrical Co.
Birmingham's Oldest and Most Complete Electrical Store

162 N. Woodward MI 4-2200



WALKING SHOES will be donned for the May 19-20th Garden Pilgrimage sponsored by the Birmingham and Bloomfield Hills branches of the Woman's National Farm and Garden Association. At the L. C. Goad residence on Lone Pine road, Bloomfield Hills, looking over the terraced garden and the wooded section which lead to a stream are (from left) Mrs. E. Govan Hill, Mrs. J. I. Ford and Mrs. L. A. Colman

DOWN TO EARTH

Perennials Lend Constant Color

By ALICE WESSELS BURLINGAME
Special Writer for The Birmingham Eccentric

This is the time of year to establish a fine perennial garden to assure constant color. For best results, this should be located in full sun and be at least four feet wide.

As you design your perennial garden, do not plan straight boundary lines, but use your garden hose to make a trial boundary line. Don't have it "too wiggly" like a snake, but have this special garden possess peaceful curves.

To assure pleasing eye appeal, interesting vertical lines. You might introduce a flowering crab in a large bed to give this line, or in a smaller garden, hibiscus or fall asters.

AS YOU PLAN the selection of plants, consider the garden as having three zones. The foremost is for an attractive edging plant. This choice can be annuals in a measured pattern, with plants placed eight inches apart. This is the detail to give the "punch" to the picture.

The central zone could have plants from one foot high up to two feet, while the back area of the perennial bed would have tall

plants like delphinium, fall asters, etc. Don't stuff every inch, but be patient and await the potential circumference of the chosen plants. Plant a good skeleton framework to assure constant color, then announce to your friends that you have a friendship garden and would like to share gift plants. By following this procedure you are assured of a good basic plan.

TO ENJOY GOOD coloring throughout the season plan or clumps of iris, shasta daisies, or rudbeckia, which is a favorite of ored flower with a brown center. Phlox, lilies, veronica, lupines, asters, mums and delphiniums supplement the less-known perennials to assure you of sparkle in the garden.

You might like to add some of the high-growing annuals such as snaps, asters, and zinnias.

BE SURE TO plant them in groupings, not rows. It is wise to plant three of a kind or more of any chosen perennial or annual in a specific location to avoid a spotty effect.

When you wish to feed a tree,

remember the fine-textured feeder roots of a tree are located at the dripline of the longest branches. If you feed your plants too much, they will have softer stems and on windy days will be unable to hold their own.

As you use a weed killer, be sure to choose a day without any wind whatsoever, so the spray will not kill your choice shrubs and plants.

LOTS OF NEW time-savers are on the market this year. Always keep your mind open to ways to make gardening more of a pleasure for you.

Metal barriers are popular to restrict the growth of grass near a border which assures the yard of a well-groomed look. These barriers are sunk in the turf, flush with the ground.

Your next edition will come from London.

Make a Sandwich

Occasionally, sheet metal is too thick to cut with shears and too flexible to saw. To cut the metal, put it in the vice between two pieces of wood. Using a hack saw, cut through wood and metal both.

Insulate Cold Pipes

As a safeguard against freezing, cold water lines should be insulated. This also prevents moisture from condensing on the outside of the pipe and dripping on the floor.

Is Your Garage Tied to Ground?

Many home garages look like "boxes" set upon the ground where there is no foundation planting to take away the box-like effect and blend the structure into the landscape.

The garage requires a foundation planting the same as the home. An otherwise beautiful property often can be spoiled without it. Planting the home garage is easy, according to the American Association of Nurserymen. It may require only a few flowering shrubs or evergreens at the front corners, where the garage is at the extreme rear of the property.

USUALLY where the garage is part of the house, the house foundation planting includes the garage.

razed, the planting being an extension of the former. Sometimes a couple of climbing roses or other vines on each side of the garage doors will suffice.

In cases where the sides and rear of the garage are visible from the rest of the property a few evergreens and flowering shrubs, or a low tree whose branches may extend over part of the roof, when combined with lower shrubs will tie the structure into the landscape.

Any plants that will keep the garage from looking like a sore thumb will help. Usually it is preferable to talk it over with your nursemaid who can come up with an answer that improves the looks of your garage permanently.

Raw Materials For Landscapes

Land, plants, water and space are the raw materials which the landscape nurseryman uses to create home-grounds of beauty, says the American Association of Nurserymen. The association advises beginners to use his professional services and it also encourages home owners to use these same materials to create their own beautiful picture, expressing their own personalities in planting their home properties.

Hose Seals Leak

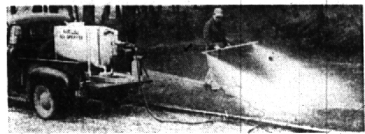
Temporary repair for a leaky pipe can be made by covering the leak with a piece of silt garden hose. Tighten the hose with a hose clamp.

SCIENTIFIC LAWN CULTURE

Lawn Feeding • Weed and Crab Grass Control

EVERY HOME OWNER wants a lush green, pest free lawn, and now everyone may have the lawn of their dreams by availing themselves of the professional service of "FERTILEZE-BLOOMFIELD LAWN CULTURE," specialist in the art of growing beautiful lawns, shrubbery, flowers, etc.

OUR METHOD of foliar feeding is the most effective method known for feeding growing plants. Our "FERTILEZE" N.C.I. (Natures crop insurance) 14 element mineral plant food carries the stamp of approval of the late LOUIS BROMFIELD and other leading agronomists throughout the country. There is no guesswork in "FERTILIRRIGATION," the fertilized moisture is absorbed quickly by the foliage and carried to the roots in the exact nutrient content as required by nature. In the hottest weather when ample feeding is needed most, without danger of chemical burns.



WEEDS, CRAB GRASS and INSECTS are no longer a problem, our method of control assures you a completely pest free lawn all season long, and is safely applied with the fertilizer applications to save you money, time and annoyance, as well as saving your lawn and at the same time providing you the lush green healthy lawn you have always longed for.

This method of lawn culture is by no means a pipe dream of an amateur gardener, it is the result of years of research and approval by some of the nation's leading agronomists, horticulturists and turf experts, and is being operated on a national scale under the joint sponsorship of GARDEN RESEARCH LABORATORIES of New York, and NUTRITIONAL CONCENTRATES, INC., New Lexington, Ohio.

No matter if your lawn is large or small, all will receive the same expert care and consideration. Call us for free estimates, you are under no obligation. You'll be amazed at the low cost of our all-around service, and astonished at the satisfactory results.

Fertileze-Bloomfield Lawn Culture

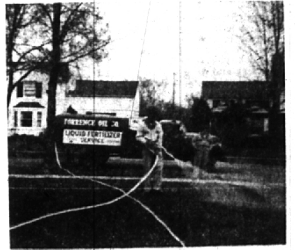
Lincoln 8-0171

YOUR LAWN COULD BECOME ONE OF

Birmingham's Most Beautiful!

HAVE YOU INVESTIGATED THE CONVENIENCE AND EFFECTIVENESS OF LIQUID LAWN FERTILIZERS?

Liquid Fertilizers have been used successfully on many fine golf courses in this area, and in parks for a number of years. Now the adaptation of fuel trucks, steam and detergent cleaned, fitted with special equipment for applying fertilizer to lawns, has made it available to the home owner. You can now grow a beautiful lawn with a firm, lush root structure with absolutely no effort or inconvenience.



IT'S NOT TOO LATE . . . IT'S TIME NOW!

NO MATTER WHAT TYPE OF FERTILIZER YOU USED EARIER THIS YEAR, YOU CAN PREPARE YOUR LAWN FOR SUMMER BY ARRANGING FOR AN APPLICATION BY THE END OF JUNE.

LIQUID FERTILIZER

LAWN SPRAYING SERVICE LEAVES LITTLE FOLLOW-UP WORK FOR YOU

. . . except keeping your lawn mower well oiled — you'll have lots of grass!



CALL or COME IN—WE'LL BE GLAD TO CONSULT WITH YOU

TORRENCE OIL CO.

2205 Holland, Birmingham, Michigan
PHONE Midwest 4-9000