

COME SEE MORE LOW PRICES ON MORE ITEMS MORE DAYS A WEEK AT A&P!

You'll Save MORE at A&P!




COME SEE YOU'LL SAVE AT A&P!

Customers' Corner

Thank You, Mothers!
Thank you, mothers, for making A&P America's foremost food retailer.
Thank you for recognizing the quality and value we always strive to bring you.
Thank you, too, for the fine suggestions you give us from time to time, that help us to continually improve A&P's service.
Thank you for being yourselves. We hope every one of you has a very, very Happy Mother's Day.

CUSTOMER RELATIONS DEPARTMENT
A&P Food Stores
420 Lexington Avenue, New York 17, N. Y.

This Sunday Surprise Mother with a MOTHER'S DAY BAKED TREAT!



JANE PARKER ROSES IN SNOW Layer Cake \$100

FRESH BAKED Cherry Pie 39c
LATTICE TOP CRUST 8-INCH SIZE

Danish Whirls 29c
Individual Coffee Cake—Ready to heat in baking tin PKG. OF 4

Potato Chips 69c
Jane Parker New Twin Pack, Full Pound 2 8-OZ. BAGS IN BOX

JANE PARKER ENRICHED White Bread 17c
1 1/2-LB. LOAF

YOU CAN PUT YOUR TRUST IN "Super-Right" Quality MEATS

"SUPER-RIGHT" QUALITY—7-RIB PORTION Pork Loins LB. 25c

"SUPER-RIGHT"—2 TO 3 LB. RIBS Spare Ribs LB. 35c

OVEN-READY—4 TO 8 POUND SIZE Beltville Turkeys LB. 49c

PAN-READY Yellow Perch LB. 29c

CLEANED SMELT LB. 19c

FRESH HERRING LB. 27c

WHITE BASS LB. 29c

***Because meat represents about 25% of your food budget, it's important to know... A&P's "Super-Right" Quality is a reliable standard of top meat value.**

CRESTMONT—7 FLAVORS Ice Cream Pie 1 1/2-GAL. CTN. 79c

CHOCOLATE COVERED ICE CREAM ON-A-STICK Eskimo Pies 4 FOR 37c

RISUNNY'S Cottage Cheese 2 LB. CTN. 39c

SUNNYBROOK Large Eggs DOZ. 53c

SILVERBROOK Butter FINE QUALITY LB. PRINT 63c

All prices in this ad effective thru Sat., May 12th

ANN PAGE Mayonnaise QT. JAR 49c

A&P—OUR FINEST QUALITY, FANCY Apple Sauce 4 16-OZ. CANS 47c

A&P—OUR FINEST QUALITY HOME STYLE HALVES Peaches . . . 3 29-OZ. CANS 1.00

PHILLIP'S WHITE, WHOLE OR SLICED Potatoes . . . 3 16-OZ. CANS 25c

Cake Mixes 3 7-OZ. PKGS. 89c

Sparkle Gelatin 3-OZ. PKG. 5c

Super-Right Luncheon Meat . . . 4 12-OZ. CANS 99c

Breast O' Chicken Tuna 6 1/2-OZ. CANS 29c

Libby's Beef Stew 24-OZ. CAN 35c

Bovril's Corned Beef 12-OZ. CAN 39c

Family Flour 5 LB. BAG 39c

Pineapple Juice 4 46-OZ. CANS 99c

Cut Green Beans 4 15 1/2-OZ. CANS 45c

Cream Style White Corn 16-OZ. CAN 10c

Ann Page Ketchup 2 1/2-LB. JAR 39c

Sultana Peanut Butter 2 1/2-LB. JAR 59c

Strawberry Preserves 7-OZ. CAN 29c

A&P Fancy Tuna Fish 7-OZ. CAN 29c

ALL PURPOSE, PURE VEGETABLE dexo Shortening 3 LB. CAN 75c

FLORIDA GROWN, SEBAGO New Potatoes 10 LB. BAG 69c

RED TOTEHOUSE Tomatoes LB. 39c

FRESH, LOUISIANA Strawberries QT. BOX 39c

Cuban Pineapple 3 FOR 1.00

Fresh Spinach 10-OZ. BAG 19c

Green Peppers 4 FOR 25c

Watermelons EA. 1.98

Florida Oranges 8 LB. BAG 59c

Sun Maid Raisins 15-OZ. PKG. 21c

Fresh Tomatoes 14-OZ. PKG. 25c

Texas Carrots 2 16-OZ. BAGS 23c

Yellow Onions 3 LB. BAG 29c

McIntosh Apples 2 LB. 29c

LIBBY'S—1 CAN MAKES A QUART Limeade or Lemonade 8 6-OZ. CANS 99c

Libby's Lima Beans 2 10-OZ. PKGS. 39c

Libby's Pies 4 FOR 75c

Libby's Peas 2 10-OZ. PKGS. 39c

Libby's Mixed Vegetables . . . 2 10-OZ. PKGS. 39c

YOU PAY FOR FLAVOR... BE SURE YOU GET IT!

CHANGE TO THE COFFEE THAT'S Alive

WITH FLAVOR! RED CIRCLE 1-LB. 89c

BOKAR 1-LB. 89c

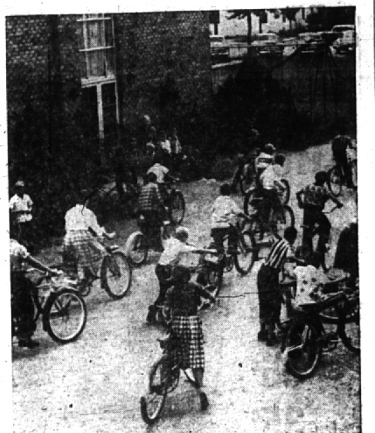
3-Lb. Bag \$2.61

1-LB. BAG 93c

3-Lb. Bag \$2.73

1-LB. 79c

3-Lb. Bag \$2.31



BICYCLES AND AUTOMOBILES bloom in the spring, and grow through the summer. This year they will be out in greater numbers than ever before, requiring greater need for caution. Bike riders supposedly use the same rules as motorists. But it will be up to the adults to stay alert and prevent accidents on Birmingham area streets.

Birmingham Scout Units In Scouting Exposition

Nine Birmingham scout units are entered in the 1956 Scouting exposition at the Michigan state fair grounds May 17, 18 and 19. Largest scouting show ever planned, it will utilize all major fairground facilities as well as a large outdoor area for camping, pioneering, aquatics, sports and other skills.

Approximately 700 scout units from the metropolitan area are represented in the show and there are 518 inside booths, each demonstrating or displaying a scouting skill, hobby or craft.

One end of the exposition is being reserved for an hour-long program which will be presented during exposition hours.

BIRMINGHAM scout units participating in the exposition are: cub pack B-11 and Troop B-5, Quarter school; troop B-1, Presbyterian church; troop B-12, Holy Name; troop B-19, Hickory Grove school; troop B-25, Penbrooke school; troop B-26, Trantree; troop B-28, Our Shepherd Lutheran church; and explorer post B-33, sponsored by the Birmingham police department.

Cubs of pack B-11 will conduct den meetings during the exposition and will exhibit handicrafts and similar projects.

Troop B-5 has as its subject locks and minerals native to Michigan. From a large map, ribbons will run to an automobile chassis and will show the various metals used in the manufacturing of automobiles.

PHOTOGRAPHY is the subject of troop B-1. Space does not permit a dark room, but scouts will display samples of various photographic work and development and

treating of films. Along with samples of various metal work projects made by scouts of troop B-12, a workshop will be set up where scouts of the troop will be doing some of this work and showing the public the use of tools used in metal shop.

Troop B-19 will display transportation models the boys have made. The exhibit will explain the development of transportation from early times to the present.

Troop B-25 will have a demonstration of rope splicing and knot tying. The troop's drill team is participating in the pageant.

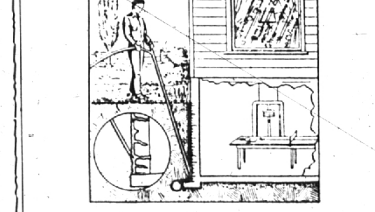
Scouts of B-26, whose subject is journalism, will publish a daily paper with interesting stories on the exposition. Explorer post B-33 also have journalism as its subject with emphasis on newspaper photography. The boys will be taking pictures with a polaroid camera. Scouts of B-28 will participate in the pageant.

E. W. Averill and Mark Duffield are co-chairmen for the northern community and are working on the special events committee which is assisting in the arrangements of the exposition.

Hours of the exposition are from 7:30 p.m. Thursday and Friday, May 17, 18 and from 2:30 p.m. Saturday, May 19.

BASEMENTS PERMA-PLI PROCESS

OF UNDERGROUND WATERPROOFING



WET-DAMP LEAKY BASEMENTS MADE DRY

Written Guarantee

WITH OUR NU-MIRACLE EXTERNAL & INTERNAL PROCESS

NO DIGGING INJURY TO LAWNS OR SHRUBS

Residential • Industrial • Commercial

MICHIGAN WATERPROOFING COMPANY

1516 S. WOODWARD AVE. • ROYAL OAK, MICHIGAN LINCOLN 6-4994

EVENINGS & SUNDAYS Phone TUxedo 1-5867

A&P Super Markets

THE GREAT ATLANTIC & PACIFIC TEA COMPANY