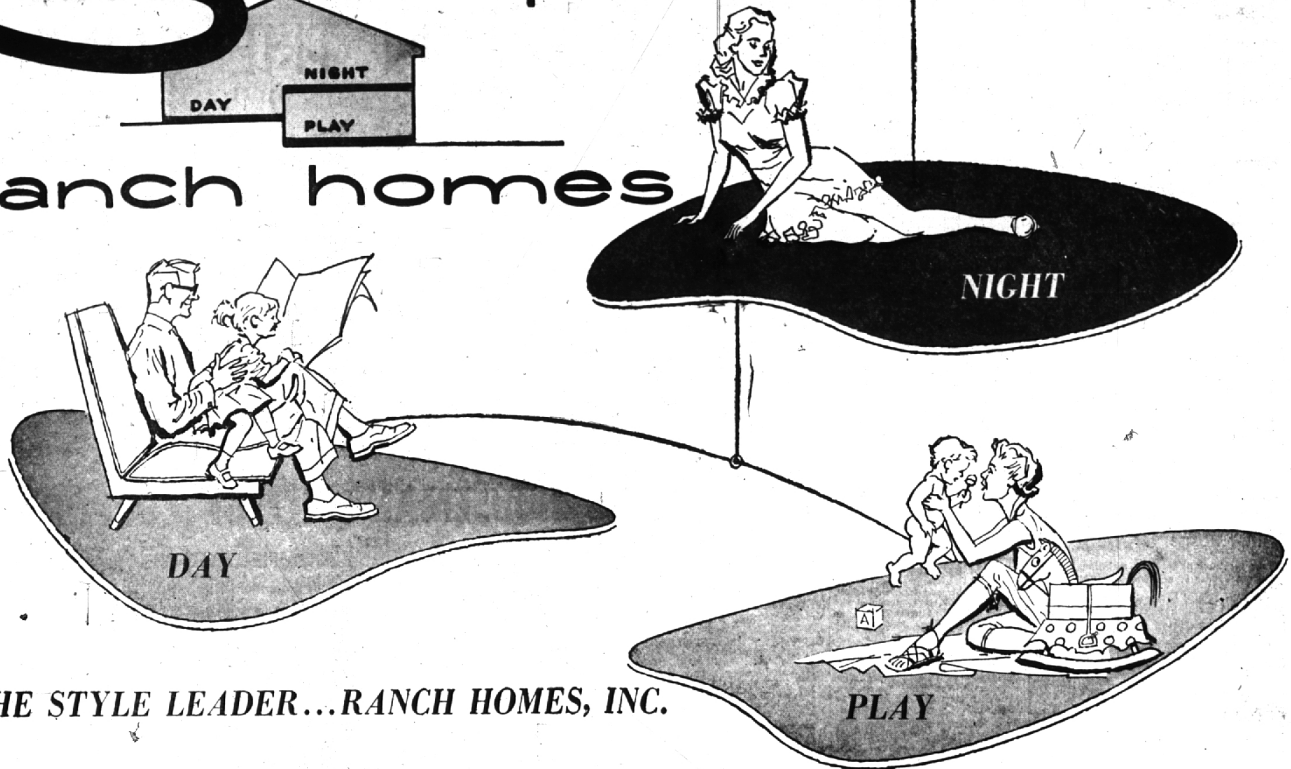


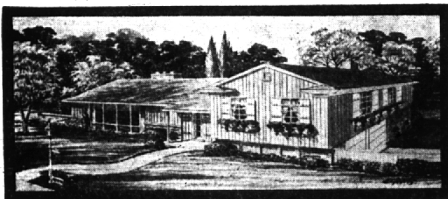
3 component ranch homes



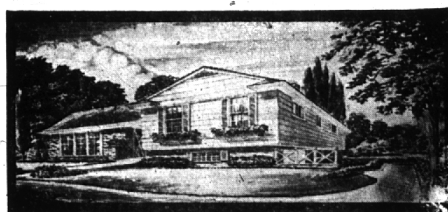
THE STYLE LEADER...RANCH HOMES, INC.

NOW INTRODUCES A DRAMATIC NEW CONCEPT OF LIVING....

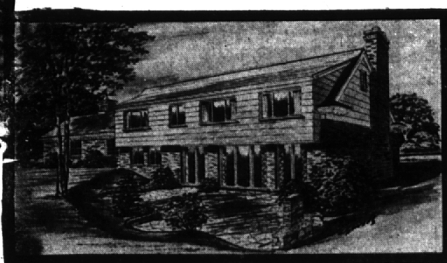
3 COMPONENT RANCH HOMES...THE "NIGHT, DAY AND PLAY" HOMES



THE MAYFLOWER . . . 1990 Sq. Ft. plus garage \$21,400 ^{est.} _{1st}



THE HILLCREST . . . 2440 Sq. Ft. plus garage . . . \$25,980 ^{est.} _{1st}



THE EMPRESS . . . 2393 Sq. Ft. plus garage . . . \$27,900 ^{est.} _{1st}

This model beautifully decorated, furnished by Pixley Furniture of Rochester, Michigan

WATCH FOR OPENING OF "NORTHVILLE ESTATES" 8 MILE AND BECK RD., FOR 3-C. AND RANCH HOMES



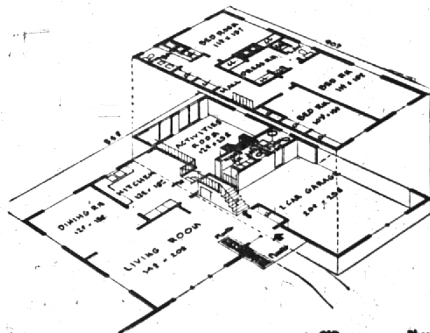
THE WARWICK . . . 2245 Sq. Ft. plus garage . . . \$29,500 ^{est.} _{1st}

THE HIGHEST LIVING LEVEL IS EVERY LEVEL IN A 3 COMPONENT RANCH HOME! Ranch Homes, Inc. has done it again! The dazzling new "3C Ranch Homes," the "night, day and play" homes mean Comfort, mean Convenience and Classic beauty both inside and out. The dramatic new "3 Component Ranch Homes" contain the outstanding designs and advantages of both the ranch and multi level home. In "3 Component Ranch Homes" you retain convenience for daytime living on one level . . . you gain quiet rooms for night-time seclusion on another level . . . you gain extensive rooms for "play" or hobbies or social entertaining on still another level. Each level in these majestic beauties is separated by just a few steps . . . you'll discover new living thrills in spacious and gracious living. Just think of it . . . marvelous outdoor views from upper levels . . . immense living-dining areas and activities areas . . . dramatic sweeping balconies . . . cheerful, happy rooms everywhere you go! Yes, you receive all this and more! But best of all is the amazing price of these spectacular homes . . . if you want a quality home then see these magnificent "3 Component Ranch Homes." You'll love them for the very life of you!

ABOUT CHRISTIAN HILLS: If you've never visited Christian Hills then you have a delightful surprise in store for you. Christian Hills is symbolic of suburban living at its finest. Here you'll see gentle rolling hills and magnificent wooded areas . . . here your handsome new "Ranch Home" or "3 Component Ranch Home" just naturally blends into a glorious setting of hills and dales and winding roads. Here, too, you can forget about city hazards because you can be sure your prop-

erty will gain in value . . . you know your children will grow up in a safe and healthy atmosphere . . . here life is quiet and peaceful. Christian Hills is only minutes away from the GM Tech. Center, Chrysler Engineering, Vickers, Fruehauf and other engineering centers. Christian Hills is close to schools, churches, shopping centers and it is within close proximity to Detroit and its suburbs. You'll find true happiness at Christian Hills where every season is another reason for living at this glorious subdivision.

QUALITY FEATURES: Colorful Twin Vanity Ceramic Wash Basins . . . Convenient Double Medicine Cabinets and Mirrors . . . Decorative wear-resistant Stone and Marble Sills . . . Outstanding selection of Natural Fireplaces . . . Lifetime Plastic "Durabuilt" Stationary Tub . . . Gliding door Floor to Ceiling Wardrobe Closets . . . Lighted Range Hood with Fan for heat and odor removal . . . Glorious colored Bathroom Fixtures . . . Convenient Lavatory off Utility Room . . . Lifetime Copper Plumbing . . . Two coats quality Wet Plaster throughout . . . Two coats of washable Oil Paint throughout . . . 2 1/2 Car Plastered Garage . . . Wife-Saver Job Built Kitchens . . . Top Quality Wood Easy Glide Overhead Garage Doors . . . Lifetime Aluminum Sliding or Double Hung Windows . . . Smart, Colorama Brick . . . Large fully Ceramic Stall Showers in addition to tub . . . Formica Counter Tops . . . Maple Chopping Blocks . . . Radiant Heat or "Blend-Air" Warm, Air Heating.



MODELS NOW UNDER CONSTRUCTION



Reddy Wired

HOMES HAVE

- FULL HOUSEPOWER
- ELECTRIC RANGE OUTLET
- ELECTRIC CLOTHES DRYER OUTLET

• In cooperation with Detroit Edison



DIRECTIONS: Drive out Woodward to 14 Mile Road, turn right to Crooks Rd., turn left to model.

Phone Midwest 6-2644 Jorden 4-5840