

DOWN TO EARTH

Garage Shelf Can Aid Gardeners

By ALICE WESSELS BURLINGAME
Special Writer for The Birmingham Eccentric

Modern aids to supplement your gardening skill make it possible to transplant and add to your garden new materials throughout the season.

It would be wise to establish a shelf in your garage for the equipment, to save time locating these time savers when needed.

As an illustration, you will want a roll of tape covered wire to cut at the desired length for tying up sundry plants. And a powder to dip new cuttings in before placing in soil in a sheltered location. This powder will assure you of a high percentage of new plants.

A WISE GARDENER always has a few cuttings of eunonymus, myrtle and other shrubs which can be used to naturalize areas and cut down on maintenance hours.

Make cuttings about three inches long and have the cut at the "joint", now dip the cutting in the dry powder, insert in rich soil, beneath a shrub, and there you will have an ever ready nursery.

When you desire to place a new plant, first prepare the hole. Then place the plant and firmly stamp the soil around the roots, filling the hole halfway with soil. Now add a hormone fluid mixture to assure a non-shock reaction, and then resume filling the hole.

ON YOUR SHELF also have fertilizer which can be diluted for a quick feeding to specific plants. Dusting powders, and many other aids can complete this shelf of your garden laboratory.

One addition I have on my shelf is a large can filled with twigs which have been shorn of leaves; about eight to twelve inches long.

Lathrup Couple Marry in Angola

Jacqueline Simmons and David Alderman were united in marriage April 23 in Chapel in the Garden, Angola, Ind. Rev. William J. Van Vleet performed the ceremony.

Jacqueline is the daughter of Mr. and Mrs. Gordon Simmons, Cambridge road, Lathrup Village. Her husband's parents are the Dale Aldermans of Lathrup road, Lathrup Village.

The newlyweds will enroll in the fall at Michigan College of Mining and Technology, Houghton, Mich.

APTITUDE TESTS

enable YOU to learn the kind of work YOU can best succeed at, or the kind of studies YOU should follow. (For men and women, boys and girls.) Vocational Counseling Institute, Daniel L. Beck, Director, 958 Macomber Bldg., Temple 1-1881, Woodward near Warren, 10 1/2 Years Serving Detroit.

AS YOU GARDEN this spring, do not cultivate deeper than one inch. If you don't already own one of the new tools for shallow cultivation it would pay you to investigate their merits.

If you cut off twigs or leaves which are diseased, burn them at once and wash your hands well before proceeding with your gardening.

Do not allow a hose to be played on your lawn mower. The water will ruin the bearings.

If your lawn is lumpy, and whose it isn't, smooth the rough spots with a top dressing of one half good husks and peat moss. Spray the lawn with 2-4-D before applying it to a given assignment.

Delta Zeta Alums Plan for Chapter

Two Oakland groups of the Metropolitan Detroit alumnae chapter of Delta Zeta sorority met Tuesday evening in the home of Mrs. Lester L. Thayer, Pembroke road, Birmingham. Mrs. Earl P. Long of 14 Mile road, Birmingham, and Mrs. Fred W. Sappnick of Royal Oak, assisted the hostess.

Plans were made for next year when the group will work for a chartered alumnae chapter in the Oakland county area.

Mrs. Wilbur A. Sears, Buckinghan road, Birmingham reviewed Alden Hatch's new book, "Ambassador Extraordinary," a biography of Claire Booth Luce.

Officers were elected recently by the two groups. Oakland group one has as president, Mrs. Robert V. Kerley, Pierce street, Birmingham, and secretary-treasurer, Mrs. W. Dean Perry, Northlawn boulevard, Birmingham.

Group two has installed Mrs. Marc Hagerman of Troy township as president, Mrs. Earl P. Long of Bloomfield township as vice president, Mrs. Donald C. Burch of Oak Park, secretary, and Mrs. William A. Newman, Yorkshire road, treasurer.

Household goods of every description are offered for sale in the Classified Columns of The Birmingham Eccentric.

Gifts and Cards for Mother

Sunday, May 13

On this day, your Gift presented as a silent ambassador of your love and remembrance, will let your best friend on earth know that she is uppermost in your heart.

Choose your gift of Cologne from our complete stock of Mary Chess; a special for Mother's Day for \$1.50*, Regular price \$2.75. Unusual scents we have are Tapistry, Strategy, Carnation, White Lilac and Yram.

We are showing many gifts, ranging in price from 50c to \$5.00 that you will find appropriate and desirable.

A MOST ATTRACTIVE grouping of the famous Georg Jensen handmade jewelry has just arrived. A most appropriate gift for the Mother wanting the unusual.

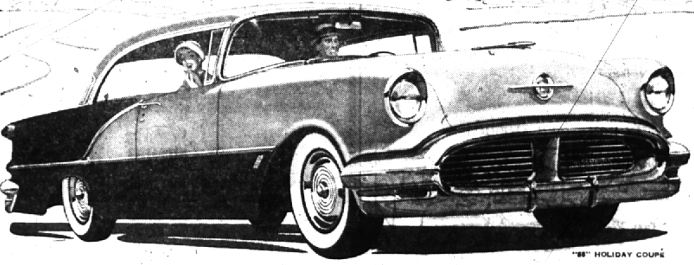
Special attention will be given to children desiring to make their purchases here. Everything will be wrapped as a gift.

La Belles

37 WEST MAPLE

Birmingham's Shop of Books, Stationery & Gifts

THERE'S A POWERFUL DIFFERENCE



... between an Oldsmobile 88 and the other lower-price cars!

You know you're in a big car... from the way it rides and handles! With your first touch on the accelerator—that 230 h.p. Rocket Engine answers with all its winging gnatness and go!

And what flashing performance in the middle ranges! The Rocket is designed to give you full benefit of high torque—310 pound-feet at normal engine speeds. That means there's always plenty of reserve power—when you want it, when you need it for safety's sake.

This rugged Oldsmobile "88" is built to take all that power, too! For instance, there's an extra-rigid, five cross-membered frame to give you ideal, shock-absorbing balance.

Economy's "W-11, Oldsmobile's "88" (and the Ninety-Eight, too) took top honors in the recent Mobilgas Economy Run!

There's a powerful difference, all right! Both in the car, and in our quality-minded way of doing business. So come on now. Take the wheel of an Oldsmobile. Rocket away... today!

Make a Date with a Rocket and see!

OLDSMOBILE

A QUALITY PRODUCT brought to you by AN OLDSMOBILE QUALITY DEALER!
SUBURBAN MOTORS CO., Inc.—565 S. Woodward
Phones Midwest 4-4440 and JORDAN 6-2364

COME IN TODAY... LEARN WHY NOW IS A GOOD TIME TO BUY AN OLDSMOBILE!

Now... high style you'd never believe possible at \$1.....

KRESGE'S

SHORT SLEEVE blouses



Mother's Day—Sun., May 13

Hard to imagine quality blouses today for just \$1... but Kresge's has them! Candy-colored, expertly finished and guaranteed washable 'cause they're Sanforized cotton broadcloth. Each with novel details found on expensive blouses. In 32-38. So many styles at Kresge's, you'll want several!

\$1.00

WEST MAPLE AT HENRIETTA

KRESGE'S

Manager's Feature Week

SPECIALS!



SUGAR WAFERS . Reg. 39c lb. . NOW 33c lb.

FUDGE SQUARES Reg. 39c lb. NOW 29c lb.—2 lbs. 50c

SPACE SAVER WASTE BASKETS Large Capacity Reg. \$1.49 NOW 97c

USED Juke Box RECORDS 78's and 45's Choice of Many 25c each

LARGE SIZE BATH TOWELS Stripes and Plain Colors Reg. 59c Each . NOW 2 for 97c

Children's BOXER SHORTS Sizes 3 to 6 Reg. 39c NOW 3 for 87c

Boys' PLASTIC JACKETS Sizes 4 to 12 Reg. \$2.98 NOW \$1.97

Boys' SPORT SHIRTS Short Sleeve Sizes 4 to 14 Reg. \$1.00 NOW 87c

LADIES' UMBRELLAS Reg. \$3.98 NOW \$2.98 Turn in Any Old Umbrella And Your Old Umbrella

Men's SPORT SHIRTS Short Sleeve Small, Med. & Lge. Reg. \$1.29 NOW 97c

DINNER SIZE NAPKINS 200 Count Pkg. Reg. 69c NOW 59c

LADIES' SNAP-IT EARRINGS Interchangeable Makes 3 Styles Pair \$1.00

LADIES' BABY DOLL PAJAMA SETS . Reg. \$1.69 . NOW \$1.37

WEST MAPLE AT HENRIETTA—IN BIRMINGHAM