

Spring Griever

By an Eccentric Poet

"In the Spring a young man", etcetera.
But the Spring makes of me a frettier. A
Sunny afternoon
Strikes me not as a boon.
But the great-un-mak of Winter's Ball,
Nodding of their disguises, all
The cobwebs, and the window's dust,
A warning that in haste I must
Direct my energy and acumen
To thirty mop and hungry Vacuum.
The lawn, its new green showing,
For me a harbinger of moving.
Each shooting little sprout
Inspires me with doubt.
As to the fit of last year's garments
On several small varnishes.

Spring is so lyrical! Oh it
Grieves me that I who'm poet
Must at its birth remain mute.
Awe'd at the price of a suit
For Junior, barred from communing
With prosperous folk who are mooning
About those things so best, so free,
While clipping coupons merrily.

Troy School Adults Plan Square Dance

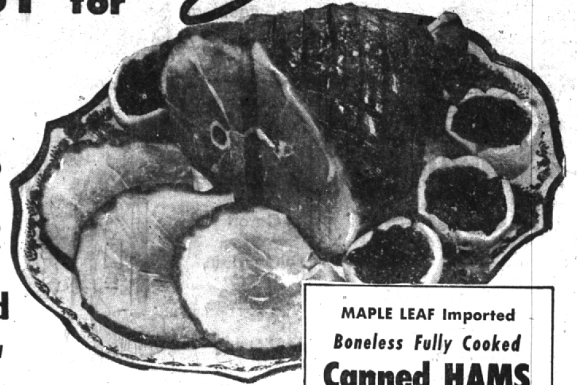
TROY—Wild Bill and His Smokey Mountaineers will provide music for Troy Number Two school's square dance April 7 from 8:30 to 12:30 at the high school gymnasium.
Profits will be used to improve Number Two school's playground, and for after-school activities.
Dance co-chairmen are Mrs. John S. Davis, 370 W. Square Lake, and Jack Muir, 551 Blanche.

Huge rocks carved by wind and sea tower into unusual rock formations in the upper peninsula. Popularly called "picture rocks" they have become a major tourist attraction.

WRIGLEYS

Bring You the MOST and BEST for

Easter

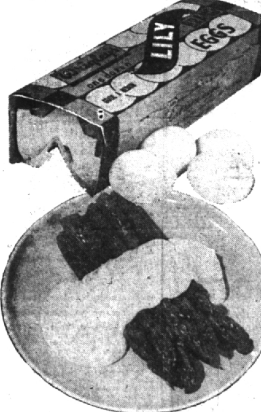


SWIFTS
Premium
WILSONS
Certified
ARMOUR
Star or
Greenfield
Sugar Cured
Hickory Smoked

MAPLE LEAF Imported
Boneless Fully Cooked
Canned HAMS
Ready to Serve \$5.89
6 1/2 lb. Can
Beth's Blackhawk Boneless Fully Cooked CANNED HAMS 3 1/2 lb. \$3.49 Can
Dubuque Brand Boneless Fully Cooked CANNED HAMS 3 lb. \$2.59 Can
Devils Brand Boneless Fully Cooked CANNED PICNICS 4 lb. \$1.99 Can

Smoked HAMS
Full Shank Half
Cut from 12 - 16 lb. Hams
Butt Portion lb. 53¢
Whole Hams lb. 49¢

LILY BRAND Grade "A" FRESH LARGE
All White EGGS
All White — Perfect
For Easter Egg Coloring!
Dozen in Carton **53¢**
New Process — Whole Kernel
Niblets Corn 4 12-oz. Vac. Cans **49¢**
HUNT'S California
Fruit Cocktail 5 Tall 300 Cans **\$1.00**
New 10-X, Yellow or Old Fashioned Brown
Domino Sugar Your Choice 1-lb. Box **10¢**



CALIFORNIA New Fresh
ASPARAGUS
Selected Tender All Green Spears **29¢ lb.**
Prices effective through Sat., March 31. We Reserve the Right to Limit Quantities.

STOKELY'S Finest Frozen
POT PIES
• CHICKEN
• TURKEY
• BEEF
• TUNA
5 8-oz. Pies \$1

Enter at Wrigleys **GOLD BELL'S**
\$250,000 Fabulous Birthday CONTEST!
and **WIN FREE PRIZES!**
• MINK Coat • 1956 AUTO
• Sable Bolero • Lady's Ring
• Man's Ring • 21" Color TV
• 2-Week Trip to Florida
If You Get Your Entry Blank at Wrigleys You May ---
WIN 64,000 GOLD BELL Gift Stamps
Wrigley's Free Bonus Prize!
Enter As Often As You Like!

★ 855 Hunter Blvd. ★ 1855 Woodward at 14 Mile
BIRMINGHAM
Open Thur., Fri., Sat. 'til 9 p.m.

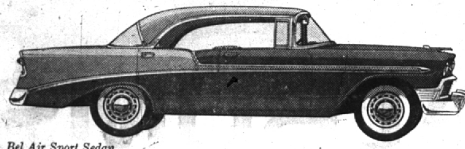
Kay Baum Shop Moves To Modern New Store

Kay Baum woman's shop, a Birmingham business since 1937, moved Tuesday to its new modern store at 162 West Maple.
April 5 has been set for the store's grand opening.
Completely remodeled and enlarged inside and out, the interior was designed to create complete flexibility of sales spaces and predominantly display merchandise.
A suspension system of plastic tray-in-walnut woods is unique in the field of merchandise display, according to building architect Eliot Robinson of Birmingham.

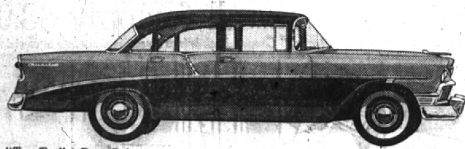
DRESSING rooms in the new store have mirrored walls and are oversize for convenient use. The store is carpeted throughout.
Completely air-conditioned, the store lighting is predominantly incandescent with incidental fluorescent fixtures.
Office area, rest rooms and employee lounge are on the second floor. An enlarged basement, running the full length of the store, has been designed for future expansion into sales space.
FRONT of the building is painted green and white. Recessed show windows provide customer protection and eliminate necessity of an awning.
Rear of the building has been redesigned, providing customer and service entrances.

Formerly located at the north-east corner of Maple and Pierce, Kay Baum is a family operation.
OFFICERS are the five Kerschbaum brothers.
Meyer is president; Jack, secretary-treasurer; Aaron, general manager; and Belmont and Leonard, buyers.
PHONE—WRITE—CALL TODAY
BERESFORD-THOMPSON
"WE INSURE EVERYTHING BUT YESTERDAY"
Edwin M. Beresford
Otis C. Thompson
55 W. Maple
At Woodward
Birmingham
MI 4-5330

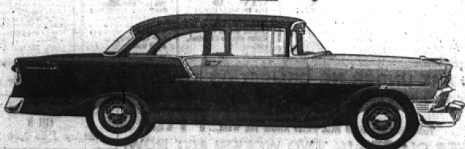
WHAT'S YOUR LINE?



Bel Air Sport Sedan



"Two-Ten" 4-Door Sedan



"One-Fifty" 2-Door Sedan

Chevrolet's got three... Bel Air, "Two-Ten" and "One-Fifty." With 20 sassy-styled models to pick from, there's one just made for you!

ARE YOU A BEL AIR BUYER?
The Bel Air Series brings you luxuries and conveniences you won't find in many models of higher priced cars. You also get Chevrolet's record-breaking performance, with horsepower ranging up to 225!

"TWO-TEN" TO YOUR TASTE?
The "Two-Ten" has its own sassy new styling and colorful new interiors. Body by Fisher, of course. And you get the stability and the sureness of control that make driving safer—and sweeter—in a Chevy!

"ONE-FIFTY" FILL YOUR BILL?
There's no lack of chrome trim in Chevrolet's lowest priced series. And you can pick your power—V8 or 6. Come on in and see which one of Chevy's 20 new beauties suits you best!



America's Favorite—by a Margin of 2 Million Cars!

NORTH CHEVROLET CO.
1000 S. WOODWARD
MIDWEST 4-2735

AIR CONDITIONING—TEMPERATURES MADE TO ORDER—AT NEW LOW COST. LET US DEMONSTRATE!

121 GLAMOROUS PRIZES IN THE "SEE THE U.S.A. IN YOUR CHEVROLET" CONTEST. ENTER NOW—AT YOUR CHEVROLET DEALER'S.