

Young Republicans Form District Club

A new organization in the Oakland county political scene has come into existence with the formation of the 18th Congressional District Young Republican club with Edward Lawrence of Madison Heights as chairman.

In addition to social activities, the purpose of the group is to work in the coming elections for federal, state and county offices. This work will be coordinated with the activities of all Republican organizations in the county.

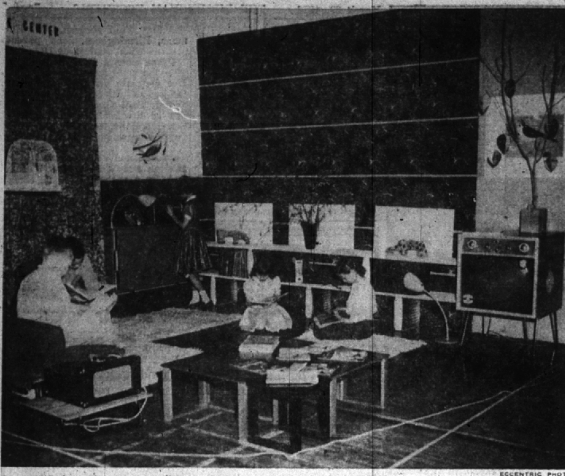
OTHER officers of the Club are: Betty Ellis of Birmingham, vice chairman; Helen Lawrence of Madison Heights, recording secretary;

United Foundation Makes Appointments

A. J. Turner of Detroit has been appointed northern territory director of the United Foundation, succeeding Hal Goode of Oak Park, Mich. Turner formerly was associate director. He will coordinate fund-

raising efforts in southern Oakland and Macomb counties, Birmingham, Hamtramck and Highland Park.

More than 40 townships, villages, towns and cities are included.



BALDWIN school pupils are enabled to visualize their PTA's intended "Operation 206" through this model set up for demonstration purposes. The proposed resource center eventually will fill an entire room in the school.

Full Steam Ahead at Baldwin With PTA's 'Operation 206'

By BETTY DUPUIS

Baldwin elementary school PTA has a name for its newly adopted long-range project—it has been named "Operation 206".

Committee members working on the project envision a center for art and science source materials, a place for students to work out creative projects, a true source and resource center.

They expect to incorporate a library, a music center, a science museum and resource center, a display and special exhibit area, a student theater, and a center for seeing and hearing films, records, TV and radio, all in one area for student use.

Under existing crowded conditions, 206 must be used as a classroom but it is expected that it can be made available for its intended purpose by 1957.

THE GROUP expects to begin their long term program next fall. They will start to accumulate books, records or visual aids, with other equipment, keeping in mind its eventual use in the projected resource center.

A gift fund raising campaign will be put in effect to help accomplish this goal.

THIS PROJECT takes its title from Room No. 206, which will eventually become the resource center. 206 is ideally suited for its future purpose.

It has a stage, is large enough for little theater presentations, film or TV programs. Also, there is space for a library, reading area.

Ritchie Announces New GOP Offices

Political activity in Oakland county stepped up its tempo with the announcement by Chad Ritchie, Republican county chairman, that new and larger offices have been opened at 416 Pontiac State Bank building in Pontiac.

The new offices will provide needed space for the planned intensive campaign for federal, state and county offices and to serve the needs of various county committees, clubs, women's organizations and the county finance committee.

Present staff, which will be expanded soon, include Mrs. Eunice Guentache, office manager, and Bernard L. Ryan who will be assistant to Ritchie, and Edward E. Wilson, 18th Congressional district finance chairman.

World's first state police radio system was established in Michigan in 1929. Now state police planes, patrol cars, eight district headquarters and 45 posts are coordinated by two-way radio.

STORE HOURS
9:30 - 5 Mon. thru Sat.
11 - 4 Sunday

"Buy at The Mill—and Save"

IT'S WORTH MORE than the savings.

A visit to the Clinton Mill Store is rewarding.
Drive to Clinton today!

CLINTON WOOLEN MILL
On U.S. 112 Clinton, Michigan

learn to speak
FRENCH • SPANISH • ITALIAN
GERMAN • ENGLISH
any language

berlitz Schools of Languages

148 S. Woodward Ave., B'ham, MI 4-9200
405 Empire Bldg., Detroit 26, WO 2-7788
Clifford at Washington Blvd.

GROSSE POINTE • BIRMINGHAM

It's always fair leather when the school set gets together in Spring

FLAMES

• white • fawn • pink

children's better SHOES better fitted for over 50 yrs

CLYDE E. HORNING

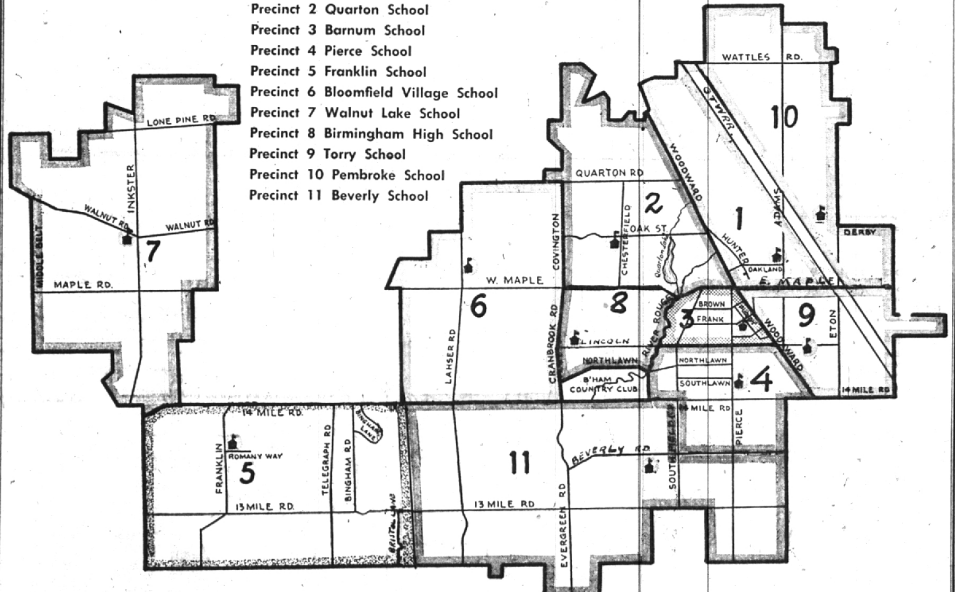
DEARBORN • BIRMINGHAM • DEARBORN • GROSSE POINTE

TO THE QUALIFIED ELECTORS OF THE SCHOOL DISTRICT OF THE CITY OF BIRMINGHAM OAKLAND COUNTY, MICHIGAN

The following voting precincts have been established for all school elections to be held in the School District of the City of Birmingham.

BIRMINGHAM SCHOOL DISTRICT

- Precinct 1 Adams School
- Precinct 2 Barton School
- Precinct 3 Barnum School
- Precinct 4 Pierce School
- Precinct 5 Franklin School
- Precinct 6 Bloomfield Village School
- Precinct 7 Walnut Lake School
- Precinct 8 Birmingham High School
- Precinct 9 Torry School
- Precinct 10 Pembroke School
- Precinct 11 Beverly School



- Precinct No. 1** — The area bounded on the north by the district limits, on the east by the G.T.W.R.R., on the south by East Maple Avenue and on the west by Woodward Avenue. Registered voters residing within these boundaries will vote at the Adams School for all school elections.
- Precinct No. 2** — The area bounded on the north by the district limits, on the east by Woodward Avenue, on the south by West Maple Avenue and on the west by Covington Road. Registered voters residing within these boundaries will vote at the Barton School for all school elections.
- Precinct No. 3** — The area bounded on the north by West Maple Avenue, on the east by Woodward Avenue, on the south by Lincoln Avenue and on the west by the River Rouge. Registered voters residing within these boundaries will vote at the Barnum School for all school elections.
- Precinct No. 4** — The area bounded on the north by Lincoln Avenue, on the east by Woodward Avenue, on the south by 14 Mile Road and on the west by the River Rouge, together with the area bounded on the north by 14 Mile Road, on the east by Greenfield Road, on the south by Beverly Road and on the west by Southfield Road. Registered voters residing within these boundaries will vote at the Pierce School for all school elections.
- Precinct No. 5** — The area included in the former Franklin School District, being that part of the Birmingham School District bounded on the north by 14 Mile Road, on the east by the Franklin District limits, on the south by Inker Road. Registered voters residing within these boundaries will vote at the Franklin Village School for all school elections.
- Precinct No. 6** — The area bounded on the north by Quarton Road, on the east by Covington Road and Cranbrook Road, on the south by 14 Mile Road and on the west by the district limits. Registered voters residing within these boundaries will vote at the Bloomfield Village School for all school elections.
- Precinct No. 7** — The area included in the former Walnut Lake School District, being that part of the Birmingham School District bounded on the north by the district limits, on the east by the district limits, on the south by 14 Mile Road and on the west by Middlebelt Road. Registered voters residing within these boundaries will vote at the Walnut Lake School for all school elections.
- Precinct No. 8** — The area bounded on the north by West Maple Avenue, on the east by the River Rouge, on the south by the Birmingham Golf Club and on the west by Cranbrook Road. Registered voters residing within these boundaries will vote at the Birmingham High School for all school elections.
- Precinct No. 9** — The area bounded on the north by East Maple Avenue, on the east by the district limits, on the south by 14 Mile Road and on the west by Woodward Avenue. Registered voters residing within these boundaries will vote at the Torry School for all school elections.
- Precinct No. 10** — The area bounded on the north by the district limits, on the east by the district limits, on the south by East Maple Avenue and on the west by the G.T.W.R.R. Registered voters residing within these boundaries will vote at the Pembroke School for all school elections.
- Precinct No. 11** — The area bounded on the north by 14 Mile Road, on the east by Southfield Road, on the south by the district limits and on the west by the district limits, together with the area bounded on the north by Beverly Road, on the east by Greenfield Road, on the south by the district limits and on the west by Southfield Road. Registered voters residing within these boundaries will vote at the Beverly School for all school elections.

Precincts No. 10 and No. 11 have been newly established to provide greater convenience for registered voters living within those areas.

WHERE can you get the finest rug and carpet cleaning in town?

Thousands of women will give you the same answer...Ridley Cleaners. They have discovered that Ridley's long experience, modern facilities and skilled workmanship can always be depended on for consistently fine cleaning. So why attempt to clean rugs and carpets yourself...why pick a cleaner hit-or-miss? Why not be sure of the best by calling Ridley Cleaners. Ridley's quality costs no more—but it gives you more. A trial will convince you. Call Ridley now—24-hour phone service.

Ridley's rug and carpet cleaning service is backed by over 30 years' experience.



24-hour phone service
Dial Operator...ask for Enterprise 6655
(No toll charge)