



Village Players Slate 'Ladies of Corridor'

Village Players will put the final polish on their March invitational production, "The Ladies of The Corridor," at dress rehearsal tonight at their Chestnut street playhouse.

The theme of the play is the wasted lives of women living alone in small residential hotels throughout the United States.

THERE ARE THREE principal characters in "The Ladies of The Corridor." Mrs. John Gilray in the role of Lulu Ames, attractive widow looking for excitement in New York, has as her companion a French poodle, "Sassy".

Mrs. Nichols, a sweet faced invalid who blackmails her son into spending his life in her attendance, will be presented by Mrs. Douglas A. Brown. Mildred Tynan, who escapes into alcohol, will be handled by Mrs. Albert Richling.

Action of the play is centered around Hotel Marlowe in New York City. The six different scenes include the lobby, corridors and rooms occupied by the widows. The difficult set was designed by Mrs. Stanley R. Hood.

MRS. HERBERT ROYAL, charged with securing properties, says, "Furnishings have been secured for six separate rooms, more than for any play Village Players have ever staged."

Stage manager and set builder, Harry E. Gene Manley, commented, "The stage crew have a real challenge to shift scenes and keep enough room backstage for cast and technical staff to operate."

Directorial duties are being handled by Mrs. Madeleine H. Tillotson, assisted by Mrs. George F. Green.

OTHER LADIES who will appear are Mrs. Warren Sumner; Mrs. Charles E. Asper; Mrs. Robert Wyatt; Mrs. John Hall; Mrs. Horton Allen and Mrs. Raymond F. Giffels.

Gentlemen included in the cast are Leroy Braisted, Charles N. Blunt, Robert Miller, Earl Wilson, Robert Wyatt, John Gilray and Raymond F. Giffels.

Make-up will be handled by Mrs. A. J. Daisy and assistants. Mrs. Frank Mosher is charged with costumes.

ATTENTION HERE centers on Smiley Hall, a new member of the Village Players who has a major role in Friday and Saturday's production of "The Ladies of the Corridor." From left, Mrs. Albert Richling, Mrs. Douglas A. Brown, and Mrs. John A. Gilray, Jr. welcome Smiley, the John E. Hall's French poodle, to the field of amateur theatrics.

Have You Met... Mr. and Mrs. Ernest F. Widlung, who moved to 18201 Buckingham road, Birmingham, March 17 They were formerly residents of Bethel-boro, Pittsburgh, Pa. Mr. Widlung is district sales manager in places with DuPont. They have three boys, Frank and Fred, both 12, and Ted, 10. Mr. Widlung belongs to the Masonic lodge and his wife is a member of Birmingham's New-comers club.

Torry Masquers Presenting Play

Entertainment backed by practical advice on child behavior problems will constitute the program of Torry School's Parent Teachers Association meeting Tuesday, at 8 p.m., according to President Edwin Beyer.

Torry Masquers will present the play "Fresh, Variable Winds," which deals with parent-child relationships. Cast includes Richard Shryack, Mrs. Lella Hudson, Mrs. Charles Tamer.

Torry students John Miller and Sharlene Petrucci are also taking part in the skit. Directors are Mrs. Theresa Merrill and Donald Hill.

Discussion following the play will be led by Myron Platt. Refreshments will be served. The meeting is open to all residents of the Torry School area and their friends.

Elected a Phi Beta At Albion College

Ann Dustman has been elected a member of Phi Beta Kappa at Albion College.

Ann Dustman, of Redding road, Birmingham, is a senior at the college. Her parents are the Russells.

EASTER FLOWERS



Preview of Easter Plants, Cut Flowers and Corsages

at KRESGE'S

New FLOWER MART

CINERARIAS	\$2.49
TULIPS	\$2.49
HYACINTHS	\$2.49
DAFFODILS	\$2.49
AZALEAS	\$1.49
LILIES	\$2.98

Special THIS WEEK—

VIOLETS	29c	ORCHIDS	97c
---------	-----	---------	-----

KRESGE'S

West Maple at Henrietta



NEW BIRDS EYE FRUIT PIES
SERVES 2

APPLE CHERRY 10 Oz. Pkg. 5 For \$1.00

4 for \$1.00

DOWNY FLAKE WAFFLES
5 Oz. Pkg. 3 for 49c

BREADED SHRIMP 10 1/2 Oz. Pkg. 69c

Chop Suey 2 LB. PKG. 99c

Free Delivery Service

LIQUOR & BEER TO TAKE OUT
S.D.M. & S.D.D. Licenses

BIRMINGHAM FRUIT CO.
124 N. Woodward MI 4-4030

Kroger FINEST FOODS AT LOWER PRICES

Kroger
LIVE BETTER FOR LESS

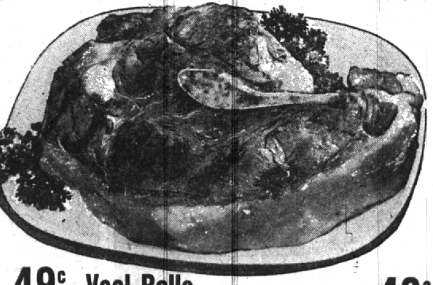
Your Dollar's worth more at a Kroger Store where you get Top Value Stamps!

IF YOUR LOOKING FOR ECONOMY, CHOOSE "THRIFTY"

ROUND or SIRLOIN Steak

Lb. 59c

Best cooked in moist heat. "Thrifty" meat has just as much food value as grain-fattened beef. Don't be confused—"Thrifty" meat is not Kroger Tenderloin Beef! The tenderest beef your money can buy!



- Ice Cream** 1/2-Gal. 79c
- T. V. Dinner** Each 75c
- Golden Mix** 17-Oz. Pkg. 24c
- Black Pepper** 4-Oz. Can 29c
- Orange Juice** 12-Oz. Cans 3 89c
- Mild Cheese** Lb. 49c
- Angel Food Cake Mix** 17-Oz. Pkg. 45c
- Salada Tea** 64-Ct. Pkg. 66c
- Welch's Fruit of the Wine** 20-Oz. Jar 49c
- Layer Cake** Golden Sno Each 49c
- Tomato Juice** 2 46-Oz. Cans 49c
- Giant Cheer** All For 73c
- Pot Pies** BANQUET 8-Oz. Pies 4 89c

- Chuck Roast "THRIFTY"** Lb. 29c
- Shank Half Ham** Lb. 39c
- Fruit Decorated Ham** Lb. 69c
- Whole Hams** Lb. 49c
- Roll Sausage** 3 Lb. Roll 69c
- Sliced Bacon** Lb. 39c
- Veal Rolls** Lb. 43c
- Veal Roast SHOULDER CUT** Lb. 39c
- Cacklebirds** Lb. 59c



FRESH FROM THE OVENS OF KROGER'S MASTER BAKERS! FRESH SLICED

Kroger White Bread

Dated for freshness. Still the same low, low price

20-Oz. Loaf 17c

- Kernel Corn** 2 No. 303 Cans 29c
- Sweet Peas** 2 No. 303 Cans 35c
- Applesauce** 2 No. 303 Cans 29c
- Grapefruit SECTIONS** 2 No. 303 Cans 29c
- Fruit Cocktail** 2 No. 303 Cans 47c
- Canned Milk** 4 Tall Cans 47c

- Lettuce** 2 24-Size Heads 29c
- Red Potatoes** 10 Lb. Bag 69c
- Green Beans** Lb. 19c
- Grapefruit** 8 Lb. Bag 49c
- Cauliflower** Each 39c

RIPENED IN OUR OWN RIPENING ROOMS! KROGER SELECT GOLDEN-RIPE

Bananas

Buy plenty now for lunches, desserts, and salads. Priced extra low!

lb. 10c

GET TOP VALUE STAMPS PLUS LOW, LOW, LOW PRICES AT KROGER!

We reserve the right to limit quantities. Prices effective through Sunday, March 23, 1956. Open Mon., Tues., Wed. and Sat., 9 A.M. to 6 P.M. Open Thurs. and Fri. 9 to 9