


### COUNTER TOP MATERIALS

FOR REPLACEMENT OR NEW INSTALLATION  
FREE ESTIMATES



- FORMICA
- VINYL
- LINOLEUM

**T. E. HOGAN CO.**  
2865 Woodward Ave.  
3 Blocks South of 12 Mile  
LI 4-3300 Open Fri.—9 p.m.

style news in a flash



**"Worsted-Lite" spring suits have a brighter look, lighter feel**

Never has so much brilliant styling been packed in the weightless 10 ounce weave of lustrous new "worsted-lites"! Shimmering texture and pin point patterning give a glorious glow to dark rich tones.

**\$70.00**

Headquarters for All Spring Accessories for Men

**Dickinson's**  
Wabeek Building Birmingham Saginaw at Lawrence Pontiac

Chirrup! here's the pantie girdle legs can't feel



by **Gossard**

The sum total's some change! Up-shaping and lacey elastic edging free your legs completely, while satin elastic and elastic and tissue net smooth you beautifully. Boneless pull-on.

white (Petite, S, M, L) 7.95

The Flair bra's exclusive contour strap and sheer leno elastic, fit and lift beyond compare. Fancied with embroidered nylon marquisette.

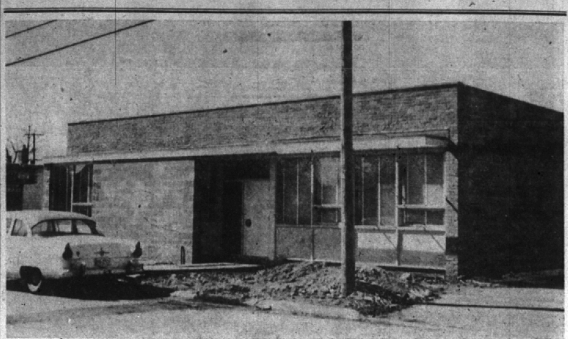
White A, B, C cups 3.95

WE GIVE S & H GREEN STAMPS

Personalized Service by Graduate Corsietiers

**The Glassford Shop**  
135 PIERCE Open 9:30 to 5:30 Daily

## BUSINESS BRIEFS



**ORGANIZATION OF ARCHITECT Linn Smith** has moved to this new building at 984 South Adams. The building will also house the office of Robert G. Caughy, professional engineer, formerly located at 124 South Woodward. Linn Smith was at 114 South Woodward. The new office building has approximately 3200 square feet of floor area.

### Local Bank Women Attend Conference

"Employee and Customer Relations" will be covered at the second annual conference of bank women at Michigan State University March 28. The program is announced by the Michigan Bankers Association which last year planned the first such conference for 50 women and was elated with a total registration of 172.

Loretta Collins, secretary, Birmingham National Bank, will serve on a panel for the session covering "Secretarial and Stenographic" and Edythe C. Peck, assistant cashier, Birmingham National Bank, will serve as moderator on the panel for "Employee and Customer Relations."

PROGRAM speakers include bank women from Holland, Lansing, Northville, Allegan, Ionia, Ecorse, Grand Rapids, Alma, Flint, Ann Arbor, Birmingham, Detroit, Addison and Wayland.

Corinne Pool, assistant cashier of the First National Bank of Holland, will be the presiding officer. She is chairman of the bank women committee of the Michigan Bankers Association.

More than 65 per cent of all bank employees in the nation are women, according to reports.

### Canadian Firm Names Southwell

R. J. Southwell, a former resident of Birmingham, has been named president and a director of Canadian Resins and Chemicals Limited, Montreal. Southwell lived at Bloomfield Court here while he was associated with Bakelite Company as a technical representative in the Detroit area.

A native of New York, he began his career with the plastics group of the Union Carbide and Carbon Corporation, New York, in 1935. He studied chemical engineering at New York and Columbia Universities and later took special training at the Mellon Institute in Pittsburgh and at Union Carbide plants in Cleveland, Ohio, and Bound Brook, N. J.

### Cargill Addresses Engineering Group

Dun A. Cargill, president and general manager of the Cargill Detroit Corp., 2204 Cole avenue, Birmingham, was a speaker at the fifth annual spring conference of the American Institute of Industrial Engineers in Cleveland last week.

Cargill spoke on "the integrated line systems engineering applied to manufacturing processes."

Cargill Detroit designs and builds automatic machinery. Cargill customers include several divisions of General Motors, Packard, Warner, Lockheed Aircraft and Timken Axle.



Gifts & Greetings for You — through WELCOME WAGON

from Your Friendly Business Neighbors and Civic and Social Welfare Leaders

On the occasion of Change of residence Arrivals of Newcomers to Birmingham

MRS. H. WALES PRICE  
Midwest 4-0516  
(No cost or obligation)

### Existing Homes Attract Buyers

Increased attention will be focused upon modern existing homes in the coming months as they provide greater competition in the market for new units, according to Charles J. Van Horn, president of the Birmingham real estate board.

Frequently overlooked as an important factor in the housing market, these older but adequate homes built since 1940 will gain in desirability, Van Horn said. Contributing to their rise in position are two problems facing builders of new homes—recent increases in construction costs and dwindling supply of land with readily accessible community facilities.

VAN HORN said that new homes with the latest in design, materials and equipment will continue to attract thousands of buyers but that prospects will be showing a greater interest in the existing, modern structures.

The strong position of these existing homes during 1955 was demonstrated in the recent semi-annual survey of the real estate market conducted by the research division of the National Association of Real Estate Boards, Van Horn said.

### Otto Qualifies For Round Table

C. Carroll Otto, 419 Lake Park, Birmingham, representative of the Mutual Benefit Life Insurance Co. in Detroit, has qualified for membership in the 1956 Million Dollar Round Table.

The Round Table is an international organization of leading life insurance producers who sold a million dollars or more of life insurance in the previous calendar year or who are life members through having sold a million a year for three consecutive years.

**Wilson Drug Co. Increases Staff**  
Henry Buslepp, F.S. Ph., has joined the professional staff of University of Michigan, is the sixth registered pharmacist on the Wilson Drug Co. staff.

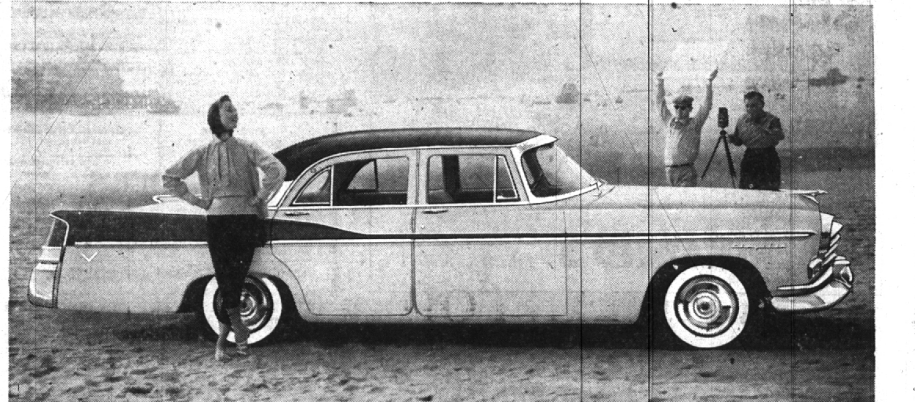
**Break that Bottleneck!**



**BUY A NEW REMINGTON RAND TOPflight Adding Machine**

FOR FASTER FIGURING Only **\$200**  
low monthly quarterly rates A Week

ASK about our Rental-Purchase Plan!  
**Birmingham Printing and Office Equipment Co.**  
369 EAST MAPLE AVENUE MIDWEST 4-4740



**CHRYSLER RINGS UP GREATEST SALES IN HISTORY WITH THE YEAR-AHEAD CAR!**

HERE'S DRAMATIC PROOF that Chrysler has more that's new than all other competitive cars combined!

New in 1956	Chrysler	Car "C"	Car "E"	Car "M"	Car "O"	Car "B"
Major style changes	YES	NO	NO	NO	NO	NO
Longer Body	YES	YES	NO	YES	NO	NO
New Pushbutton Drive Control*	YES	NO	NO	NO	NO	NO
New Revolutionary Brake System	YES	NO	NO	NO	NO	NO
Hi-Fi Record Player*	YES	NO	NO	NO	NO	NO
Increased Horsepower	YES	YES	YES	YES	YES	YES
Instant Heating System*	YES	NO	NO	NO	NO	NO

And the other 5 cars still do not have full-time power steering and the airplane-type V-8 engine  
\*Optional at small extra cost  
... major advances which Chrysler has had for years!

**"PowerStyle" CHRYSLER**  
BIGGEST BUY OF ALL FINE CARS

Our "Quality 1st" Used Cars are the best Used-Cars in town—only at the Chrysler "Sign of Quality."

**SEE YOUR CHRYSLER DEALER**

FOR THE BEST IN TV, SEE "IT'S A GREAT LIFE," "CLIMAX" AND "SHOWER OF STARS"—SEE TV PAGE FOR TIMES AND STATIONS