



SHIRLEY SPENCE, Southfield high school speech student, and her dummy "Jerry" entertain at a radio-TV conference at Michigan State University.

17 From Southfield Attend Radio-TV Meet

Southfield high was represented when students from more than 50 Michigan schools attended the 11th annual state radio and television conference held by the department of speech of Michigan State University last Saturday.

Attending from Southfield high school departments of speech and English were Jack Cirka, Gary Yasany, Shirley Spence and Ron-

nie Lohonoff.

Others were Bob Ross, Kurt Haney, Marilyn Schuenhals, Beiva Gillespie, Janet Ivanovics, Barbara Marton, Sandra Youness, Jerry Donaldson, Melvin Borzuz, Sue Clark and Steve Cirka.



Come in and...
Rocket 'Round the Block!
(or around town... if you like!)

OLDSMOBILE
SEE YOUR NEAREST DEALER

Adams, Beverly, Barnum Musicians Entertain at BHS

A musical program presented by students from Adams, Beverly and Barnum Junior high school was enjoyed by Birmingham high school students last Thursday in the high school gymnasium.

First on the program was the Beverly elementary school glee club under direction of Miss Marion Old, accompanied by Carolyn Huntoon.

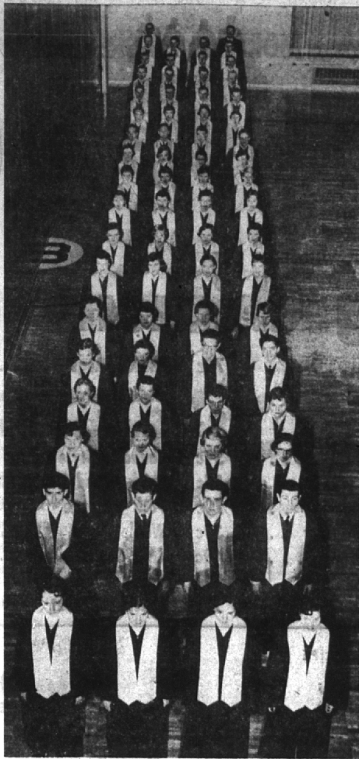
Playing in a cornet trio from Adams school were Phil Satterthwaite, Al Bauman and Charles Heaverich; Michael Von Guttenburg was violin soloist. These students are under the direction of Harold Jones.

A CORNET SOLO was played by Charles Fiers also from Adams, who is taught by A. W. Berndt. The Adams glee club consisting of approximately 50 girls was directed by Miss Alma Fassbender. Louis DeGiacca, Margo Tanner and Tom Maxwell sang solos.

The Emeralds, also under Miss Fassbender's direction, were a boys' quartet, composed of Tom Westraile, first tenor; Dave Van Cleave, second tenor; Jan Gibbons, first bass; and Bob Dickerson second bass.

Barnum Junior high was represented by a clarinet quartet under the direction of Burton Bronson. The group consisted of Majorie Stettbaecker, Melody Brown, Paul Simmons, and Gary Polle.

Harold Jones, Adams school music instructor, commented after the program, "Birmingham high school students were a very good audience, and gave their undivided attention to the performers."



BALCONY VIEW shows Bloomfield Hills high school's 74-member mixed choir lined up in the gymnasium. Group will combine with the girls' glee club to present tomorrow night's concert in the school auditorium at 8:30 p.m. Clarence A. Luchtmann is their director.

Hills Combined Choirs Hold 'Spring Fiesta'

"Spring Fiesta" will offer music with a South American flavor, including "Easter Parade" in Spanish, when Bloomfield Hills high school's mixed choir and girls' glee club combine to present tomorrow night's concert.

Under the direction of Clarence A. Luchtmann, 74 mixed choir members and 80 from the girls' glee club will sing together at the high school auditorium at 8:30 p.m. The two groups last week won recognition for their vocalizing at the Michigan district choral festival at Royal Oak. Three first division superior ratings went to each.

THE SCHOOL DANCE band, directed by Bruce Warnock, will take over between the choirs' throng acts in the music department's annual spring concert.

With background scenery provided by the school's art department, the choirs will devote the first act to "America and Its Heritage."

3 BHS Art Students Win Honors in S. E. Michigan Contest

Three Birmingham high school art students received honors recently in the southeastern Michigan regents scholastic arts contest at Detroit.

Jeanette Munge earned a gold key award for weaving an alpaca wool suit. Her entry will go to Pittsburgh for final national judging.

Capturing certificates of merit were Dave Lowrie for metal work and Bruce Roberts for transparent plates.

BHS Vocalists Win Superior Ratings

(Competing with nearly 5,000 other high school students, the Birmingham choir and girls' glee club walked off with superior ratings at the state district IV choir



INTEREST

Past service in civic and community affairs includes P.T.A., Family Service, youth, school, and traffic safety committees, reflects his continued interest in Birmingham.

Carl F. Ingraham

for
CITY COMMISSIONER

MONDAY, APRIL 2, 1956

Friends of "Ingraham for Commissioner"

The Ideal **EASTER** Remembrance... LUSCIOUS **FRUIT BASKETS**

FANCY HAM AND
POULTRY BASKETS

Complete selection on display

We specialize in these beautiful baskets... brim-full of delicious treats

• "Broasted" Chicken—Hot Donuts—Cider... To Go!

ELGIN 6-3700

McINERNEY'S FARM AND CIDER MILL

29501 Northwestern Hwy., between 12 & 13 Mile



TODAY'S MAPLE retains all the charm of the old pieces that have inspired its good design. TODAY'S MAPLE reflects our modern way of living... our skilled techniques in quality construction and in mellow, soft finishes that provide the perfect background for your favorite color scheme.



SOLID MAPLE

OPEN STOCK BEDROOM GROUPING

In a range of pieces to fit any size room! And look at the quality. Satin-smooth nut brown finish over solid maple that is made to "take-it" no matter what abuse it is given. Here is quality furniture at budget prices. Come in today and save!



DRESSER BASE \$64.00



4 DRAWER CHEST \$64.00



DOUBLE DRESSER BASE \$94.00
DOUBLE DRESSER MIRROR \$29.95



NIGHT STAND \$24.95



SPINDLE FOOT BED \$39.25



BACHELORETTE CHEST \$59.00



BOOKCASE BED \$64.00



PANEL BED \$54.95



NIGHT STAND \$29.95

• 10% DOWN
BALANCE EXTENDED
TERMS UP TO
24 MONTHS
• CHARGE ACCOUNT
... 30, 60, 90 OR 120
DAY CHARGE
ACCOUNT
SAME AS CASH



128 S. Woodward
Birmingham
• Royal Oak
• Ferndale
• Mt. Clemens

SPECIAL QUANTITY PURCHASE

NEW 1956 KELVINATOR 30" Space Saver Electric Range



MINUTE MINDER

FLUORESCENT TOP LIGHT

Newest RADIANT ROD OVEN ELEMENTS

Automatic GREAT SCOT OVEN

a whole roast wider than most!

No Down Payment
★ EASY EASY TERMS

Deluxe 30" KELVINATOR ELECTRIC RANGE... \$239.95

LESS our SPECIAL TRADE-IN on your old range... 50.00

You Pay Only... \$189.95

MILKS APPLIANCES

MI 6-1300

1493 S. Woodward

(near 14-Mile)

Open Eves.

For Spring, it's the suave continental look...

FLORSHEIM Long Tongue Slip-ons



Here is the look of distinction—the classic simplicity and handsome lines of the Florsheim long tongue slip-on. Crafted to perfection in supple Walnut calf—the softest leather ever tanned. We have a full range of sizes to fit every man.

In Black or Brown \$18⁹⁵

WILLIAMS BOOT SHOP

115 W. Maple

MI 4-7344