

Panel for Seniors Views Colleges

To benefit seniors, four college students, four seniors, and an advisor conducted a radio panel Thursday in the-BHS little theatre.

The group replied to questions pertaining to colleges, answers to which are not found in college catalogues.

Answering questions submitted by senior English classes were Bill Dove, pre-medical freshman at the University of Michigan; Bob Stahl, U. of M. engineering freshman; Nancy Yarnall, speech education freshman at Michigan State university, and Roger Miller, hotel management junior there.

ROGER ALSO acted as moderator.

Seniors participating in the panel were Cliff Wasschle, George Dila, Sandy Skimer, and Mary Collins. The broadcast was over station WGAR.

William Clark, program advisor, said answers pertained not only to the two universities represented but to all colleges.

Are you thinking of buying a new home? Then read the "For Sale - Houses" columns on the Classified Ad page of this week's Eccentric.

2-Hour Free Parking

HAVE YOUR TICKET VALIDATED WHEN YOU MAKE A PURCHASE AT JACOBSON'S

STORE HOURS:
Monday thru Saturday
9:30 A.M. until 5:30 P.M.



GOLFING AT the Valley of the Sun, Phoenix, Ariz., are the William E. Hartman, Jr., and the G. Russell Widgers. Mrs. Hartman sinks a putt while her husband (kneeling) and the Widgers watch. Mr. and Mrs. Hartman live on Berwyne, Birmingham; the Widgers live in Royal Oak. There for a two weeks' stay, the Hartmans are visiting Phoenix for the first time. Mr. Hartman is in the advertising business.

phone for appointment FE 4-8950

DR. GEORGE KEEVIL
Optometrist

298 N. Hunter Blvd. Birmingham



Jacobson's
BIRMINGHAM

ah-h-h-h...
STRAW HAT

Faberge's fragrant perennial that blooms but once a year—now. Fresh and gay and spring all over! Purse perfume 2.50; Cologne \$2; Bath powder 3.75

Plus 10% Fed. tax

COSMETICS—STREET LEVEL



1956 -
big year for
the
BRETON!

The "more hat" look comes in many sizes this season... here the big and bigger bretons, done in fine mechelou straw. Black, navy, natural and white.

Above: 16.95 Below: 15.95

MILLINERY—STREET LEVEL

Jacobson's
BIRMINGHAM

Planning Luncheon And Fashion Show

"Panhellenic Panorama" is the theme of the Panhellenic spring luncheon which will be held this year at 12:30 p.m. next Wednesday in the grand ballroom of the Statler hotel.

Approximately 500 are expected to attend this year.

Guest speaker will be Mrs. Russell Costello, Fine Lake drive, West Bloomfield, national president of Delta Zeta. She and Mrs. Wayne Boyle, president of Detroit Panhellenic, will talk on the council's background.

A fashion show will follow the luncheon, highlighted by a review comparing styles of the 1930s with present day modes.

Birmingham Eccentric. Household goods of every description are offered for sale in the Classified Columns of The Birmingham Eccentric.

OLSEN'S MKT.



We Carry Everything for delicious Meals!
Choice fruits, vegetables and meats.

We Carry A Complete Line Of Frozen Foods Including Fine Stouffer's Brand

AMPLE PARKING
West Brown at Chester

WE DELIVER
MI 4-1916

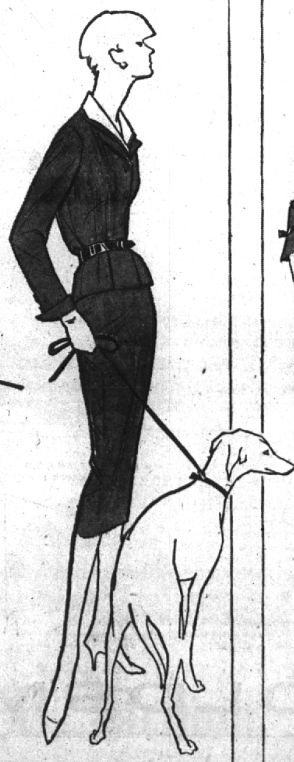
american

classic:

the suit

for spring

in navy blue



This spring's great fashion story: the natural elegance of our simply, easily-cut navy suits with gently-shaped, shorter-cropped jackets, and new beautifully narrowed lines.

Far Left: Worsted double-buttoned suit with petal cuffs, by Monarch. Sizes 10 to 20. 89.95

Center Left: Patent-belted worsted semi-tailleur with a soft back-biased jacket and white over-collar. Sizes 8 to 16. 69.95

Center Right: Worsted dressmaker, splendidly piped with silk satin. Sizes 8 to 18. 69.95

Far Right: Masterfully tailored worsted suit with couturier-look silk satin piping. Sizes 10 to 18. 69.95

SUIT SALON—STREET LEVEL

Jacobson's
BIRMINGHAM