

The Birmingham Eccentric

There is hardly a person on earth today who does not possess at least one fault, be it or she who refuses to admit the constant need for improvement is to be pitied—for it is only when a fault is admitted that one ever is in the position to outlaw it from his or her own life and living.

Newcomers Reception

Twelve hundred new residents were invited to the annual Newcomer's reception last night in the Community House. Flocking into the house, newcomers were shown through the rooms by board members. These tours were arranged by Mrs. Raymond Peck.

Two Local Coeds Join Sororities

Two local coeds have been initiated as active members of Chi Omega social sorority on campus at Hillsdale college, Hillsdale, Mich. They are Margaret Bumpus, whose parents are Mr. and Mrs. J. Allen Bumpus of Glenhurst avenue, Birmingham, and Susan Cole, daughter of the William Coles, who live on Worthington in Bloomfield township.

GATHERING in the auditorium, the newcomers were welcomed by Harold T. Hagan, president of the Community House. They had an opportunity to see and hear the mayor of Birmingham, Charles Renfrew, as well as other community leaders.

"WE HAVE THE BEDS—THE REST IS UP TO YOU"

CUSTOM MADE
HOLLYWOOD BEDS
Headboards of Plastic, Wood, Fabric

From **\$13.95**

Stearns & Foster Mattresses

Metal Adjustable Frames, \$7.95

R. C. CARPENTER Hollywood Beds
2879 GREENFIELD (Corner 12-Mile) LI 4-9133
Open Daily 9 to 6, Thurs., Fri. Until 9:00

MARCH POTPOURRI

Since a potpourri indicates a mixture we feel it is propitious to present some particularly pertinent prodding in this fashion.

Would you put your long—your fur coat in storage at this time? Well then, DON'T be hasty in uncovering shrubs or perennial and bulb beds.

IN FACT, if the latter two are not well protected you better hustle and get on a good load of PEAT MOSS or MARSH HAY while the ground is still frozen hard. It will save many plants when the alternate thaws and freezes come.

(Have you ever had a good load—of hay?)

SALT & CALCIUM CHLORIDE will take the ice out of your driveway. We recommend (but, of course, that doesn't mean anything) salt for temperatures above 15 or 20 degrees and calcium for lower temps.

This morning (Feb. 23rd) it was 6 degrees above zero—just what our ad said would happen. Please don't ask how we knew—we owe IT some money.

ROSE BUSHES should be ordered NOW. It is already too late for some varieties. We will carry a beautiful selection of WRAPPED ROOT ROSES, but—after all, there are upwards of 500 species.

We saw a magnificent AMARYLLIS in bloom last night. This reminded us that we should remind you that we still have a few left . . . some in pots at \$1.25, some in the box at 85c . . . BUT, all of them rarin' to go. What a gift for a "shut-in" we said to ourselves. And then for fun we said, "we have suffered with 'em . . . now you can have the bloomin' fun." Do you get it? Pretty good, eh? Ugh!

Give the ASPARAGUS patch a shot of GARD-N-GRO or AGRICO 5-10-5. NOW is not too early.

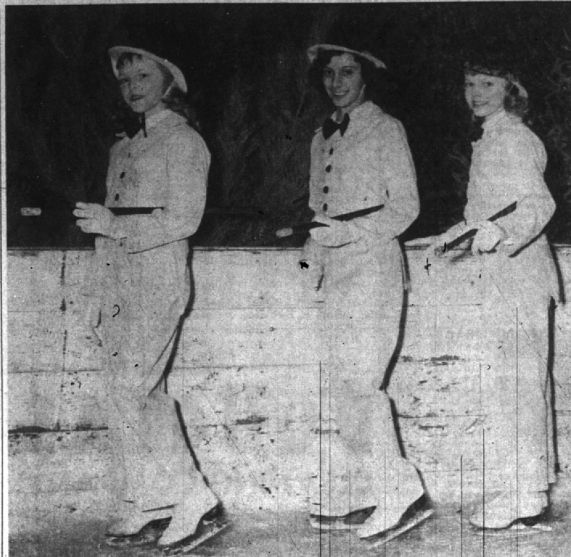
If your CHRYSANTHEMUMS grow this month you may divide them and plant them immediately. Same applies to most late-flowering perennials.

CORN MEAL PANCAKES out of Clifton Mills water-ground meals. Bread, muffins, cereal and what-not are too, too tempting when made with C.M.W.G. whole wheat, rye, buckwheat and graham flour and wheat hearts, wheat germ and yellow & white corn meal. Also PANCAKE MIX!

Speaking of food reminds us of PRUNES. Prunes is the plural of PRUNING. In order to help you get prunings we have—

- PRUNING SHEARS
- PRUNING SAWS
- LOPPING SHEARS
- POLE PRUNERS
- WOUND PAINT
- GULDE BOOKS
- a small profit

McCLELLAN-BALL CO.
YARD GARDEN SUPPLIES FARM KENNEL
BIRMINGHAM, MICHIGAN
Phone MI 4-4133 159 Brownell St.



TOP HAT AND TAILS number is one of the outstanding hits of the show. Entire performance was presented at the 1956 Ice Carnival at Grayling. Suzanne Danner, Michigan ice queen for '56 is a member of the cast.

Gala Ice Show Saturday Night In Eton Park

By BETTY DUPUIS

There will be enjoyment for young and old when the Pontiac Skating club puts on its ice show, entitled "Blades on Parade," for the residents of Birmingham Saturday night in Eton park. The show is open to the public.

Star of the show, Suzanne Danner, was chosen as 1956 ice queen for the entire state at the Grayling carnival this winter. In fact, the entire show was presented as a portion of the carnival festivities.

Miss Danner opens the show with a solo number. There are dances, comics, novelties, figure skating and acrobatics on skates, a breathtaking "torch" number, just to mention a few of the acts on the program.

PEGGY BOWMAN, who skates the torch number, is instructor for the group as well as show director. She works out all the routines for presentation.

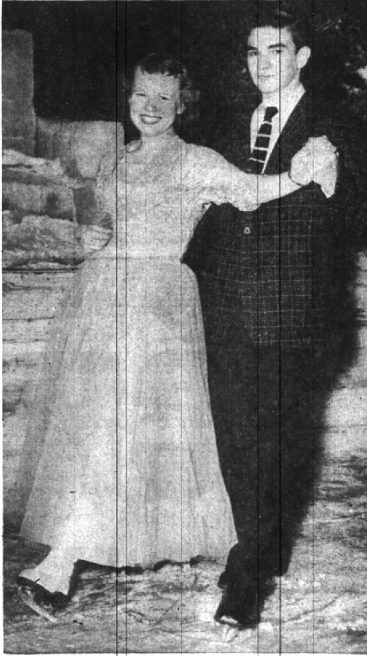
All age groups, from tiny children to teen-agers are included in the cast. Solo spots were filled on a competitive basis in the different age groups.

Among the "stars" of the show is Sandra Stockton, who began collecting medals and trophies for skating when she was only seven. Her number is called "The Blue Scarecrow".

ANOTHER, Kent Mills, is appearing with the group for the first time, since this is the first year boys have been included. His feature number mixes comedy with flashing blades and twirling baton. Kent is well known in this area for his proficiency on roller skates.

Jackie Dubay appears in three acts of the show, highlighted by a solo interpretation of "The Gypsy." Jackie was Pontiac Ice Queen in 1954.

Following the show, the rink will be opened to the public for a skating session.



DANCE NUMBERS, gorgeously costumed, will be featured on the program presented by the near-professional group, when the Pontiac skating club performs.

Tri-Sorority Tea And Fashion Show

Alpha Gamma Delta, Alpha Delta Pi and Zeta Tau Alpha are cooperating in a philanthropic fund raising bridge tea and fashion show Saturday, at Women's City club, Detroit.

Fashions will be by Hilda's of Birmingham, featuring spring and summer costumes.

Mrs. Joseph Hines, Birmingham, on the arrangements committee. Also assisting are Mrs. Elaine Warren, Mrs. Fritz Fisselman and

FOR THE FINEST IMPORTED AUTOMOBILES

Visit **FALVEY SALES** AND SERVICE

22600 Woodward Ave. Ferndale
Phone Lincoln 3-5000

House Organs ----?

YES . . . WE PRINT MORE PUBLICATIONS THAN ANY PRINTER IN MICHIGAN

Three Detroit Salesmen . . . TR 5-2629 . . . Plant MI 6-2000

The **AVERILL PRESS** INC. of Birmingham
A COMPLETE PRINTING SERVICE—FROM TYPESETTING TO MAILING

FORMERLY THE BIRMINGHAM ECCENTRIC PRINTING DEPARTMENT

Bloomfield PTA To See Program

At next Monday's meeting of Bloomfield village school PTA the school's faculty will present a program entitled "Our Social Study Program."

Teachers of all grades will participate, outlining the phase of social studies presented in each grade. Marsden Wilson, principal of the school, is directing the program.

To further the safety committee program of the Birmingham PTA council, the two films dealing with sex deviates, "Name Unknown" and "Dangerous Stranger" will be shown.

"DANGEROUS STRANGER" will also be shown to the children of the school at some later date. Candidates for office during the coming school year will be introduced and election of officers will follow.

After the business meeting, third grade mothers will serve refreshments.

First Famous Name With a Filter

OLD GOLD FILTER KINGS

True Filter True Flavor

KING SIZE FILTER AT POPULAR FILTER PRICE
Birmingham Fruit Co.
124 N. Woodward Ave.
Birmingham



OUR NATURALAIRE® MODEL TAKES TIME TO PERFECT!

The people who tailor our Naturalaire Model have had more experience with this type of suit than any other firm in America. That is why you will find Naturalaire the "perfect expression of the natural shoulder model". And you will note the following distinguishing characteristics:

- natural shoulders
- narrow lapels
- no bulge at chest
- in-and-out flapped pockets
- straight hang of jacket
- back center vent
- narrower trousers

From **\$75**

TAILORED BY **H. TREIMAN & SON** PHILADELPHIA

expressly for

Higgins and Frank

Wabeek Building Birmingham
Detroit Chicago
Grosse Pointe Farms

New style slant makes news!

FREEMAN BOOTMAKER

Bravo! Continental styling . . . with the bulk tossed overboard! Flattering "imported" look. Luxurious leather, trimmed and slimmed. Rich, dark new shade . . .

wonderful feeling FREEMAN'S Also Fine Selection of Banister Shoes

\$22.95
Bootmaker "Balanca," Teak Brown or Black
Other Freeman's \$10.95 to \$24.95

WABEEK BUILDING BIRMINGHAM, MICH. BN 6-1168

Higgins and Frank

The "Loafer" by Chippewa

The season's outstanding leisure Jacket by CHIPPEWA. Always virgin wool in exclusive CHIPPEWA patterns and authentic tartans. Featherweight wools tailored to perfection in the newest leisure wear style.

CLINTON Woolen Mill
On U.S. 112 Clinton, Michigan