

Luncheon Set For Girl Sailors

Opening luncheon for girl sailors of Orchard Lake Country club is Saturday, June 16, with Barbara Hobart as chairman. Senior advisers are Mrs. Eric Sommer and Mrs. W. K. Gluman.

The girls sailing season opens June 19. An interesting feature is that the sailing aspect of Orchard Lake has been a part of club life for at least three generations. The boats are sporty, racy and inland Y, ranging about 19 feet long.

Veteran Performer In Dance Ensemble

Kevin Carlisle, 764 Southfield, Birmingham, has joined the dancing ensemble of the Detroit Melody Circus Theatre.

Kevin, who is a veteran performer with the Melody Circus, was educated musically at the Juilliard School of Music and has studied dancing with Antony Tudor, Jose Limon, Martha Graham and others.

A dance teacher to boot, he has his own dance company with which he has toured the country as soloist and choreographer. His broad experience has included appearances at Cleveland's Cain Park Theatre in Educational films, in the motion picture "Light Up the Land," and on television with Arlene Francis.

Symphony Concert Scheduled Sunday

A newly formed group, the South Oakland county symphony society, is sponsoring an outdoor concert Sunday at 3:30 p.m. in Great Lakes court at Northland center, featuring the Royal Oak Symphony Orchestra.

There are 65 members in the orchestra and the presentation is open to the public with no admission charge.

The society has as its aim to make good music more accessible to residents of South Oakland county.



STARTING THE LOCAL tennis season off on an enthusiastic and friendly note were the officers and committee members of the Birmingham Tennis Club (BTC). Grouped around the banquet table are (left to right) Mr. and Mrs. Ray Sackett, Mr. and Mrs. Frank Treco, Leon Bramley and Mr. and Mrs. William Henderson. The club held their dinner and social evening at the Sylvan Glen country club.

Cranbrook Guild Presents Chamber Orchestra Concert

Cranbrook Music Guild will present a chamber orchestra concert at 4 p.m. Sunday, June 24 at the Greek Theatre for members, and tickets for the public are obtainable at the Record Corner and Grinnells in Birmingham. In case of rain the concert will be at the Cranbrook auditorium.

Conducting will be Paul Olefsky, first cellist of the Detroit Symphony, who has conducted numerous chamber orchestras in the East. The program will consist of Vivaldi, Mozart, Shapleigh, Bach, Handel and Gustav Holst.

PARTICIPATING will be Miss Virginia Housley, soprano, and Anthony Marzke, tenor, along with

Howard Kesner, Guyton Amato and John Van der Graaf.

AT the annual meeting on May 28 officers elected, comprising the board of trustees, include LeRoy W. Dahlberg, president; William L. Graham, vice president; Frederick

members of the Detroit Symphony Orchestra . . . Mischa Mischakoff, noted violinist and concertmaster of the Detroit Symphony, Mischa Kottler, pianist, and James Pelletier, flute.

Other personnel include Eugene Altschuler, Isador Saslov, Harvey Seigel, Thaddeus Markiewicz, Milton Setzer, Morris Hochberg, Ed-



PAUL OLEFSKY

G. Weed, treasurer; L. James Schneider, secretary. New members elected are Mrs. Leonard F. Lewis, Mrs. Lewis B. Sappington and Clyde Craine.

Those continuing to serve are Henry S. Booth, Mrs. Gunner Karlstrom, Mrs. Walter F. Skinner, Mrs. Walker A. Williams, Mrs. Benjamin J. Brewster, Mrs. Edward R. Chapman, Charles Klingensmith and Mrs. John W. Sanders.

Hopkins Include Visit with Son On European Tour

Mr. and Mrs. Albert Hopkins of Herwyn road returned Sunday from a ten-week tour of Europe.

Highlight of their trip was the three weeks they spent with their son, James, in Madrid, Spain.

Jim has been there a year and a half as a chemical engineer with a pharmaceutical company.

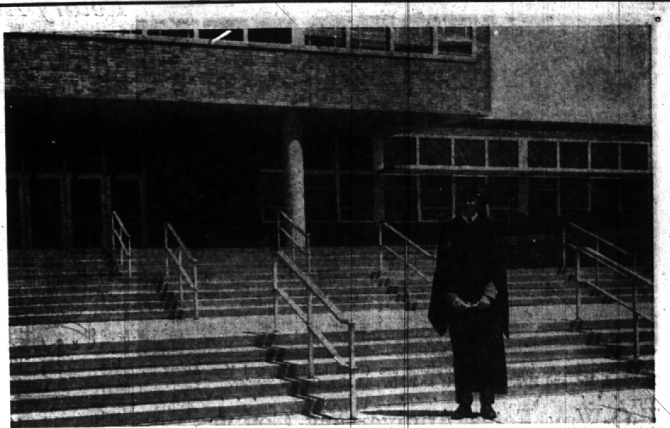
Switzerland, France, Belgium, Netherlands and England were included in the tour as well as Germany, where they visited with friends.

'Plantation Brunch' At Oakland Hills

Oakland Hills Country club will be the scene of a "Plantation Brunch" at 10:30 a.m., June 20.

The program will also feature an Arthur Murray dance presentation.

Mrs. Robert Drummond, chairman, will be assisted by Mrs. Vincent Van Fleet, Mrs. Ed Murray and Mrs. C. A. Cain. Mrs. James Rowan Ewing is social chairman.



NO SERMON FOR TOM

That diploma isn't a free pass to security. It's a paid up ticket to responsibility. And nobody knows it better than our friend here and his fellow graduates. They don't need any preaching from us. They are aware of and prepared for a lot more than most folks give them credit.

If we were to offer any advice it might be that thrift is a very desirable habit. But we know that many of them have already acquired it because they have accounts at Birmingham Federal where their savings earn more. So . . . congratulations Class of 1956. Good luck!



Savings Insured to

\$10,000.00



Birmingham Federal Savings

AND LOAN ASSOCIATION

Woodward at Maple

3055 W. 12-Mile Rd., Berkley

SELL-OUT SALE

WE'RE FORCED TO VACATE

DRASTIC REDUCTIONS

ON ALL MERCHANDISE

OPEN
EYES
TILL
9:00

UP TO 50% OFF

OPEN
EYES
TILL
9:00

WALTON'S

Jewelry and Gifts

154 M. MAPLE

BIRMINGHAM

This Is The FABULOUS 205 HP. PONTIAC CHIEFTAIN

\$2244.22

205 BLAZING H.P. V-8 ENGINE—Turn Signals, Safety Door Locks, Ash Trays (front and rear), Cigar Lighter, 4 Arm Rests, Dual Visors, Dual Positive Action Wipers, Coat Hooks, 7.10x15 Tubeless Tires—All included in this price.

ACE WILSON'S

ROYAL PONTIAC

818 N. MAIN ST., ROYAL OAK

OPEN
8:30 A.M.
to 9:30 P.M.
DAILY

LI 7-6100

Just South of Gardenia

JO 4-6560

SATURDAY
8:30 A.M.
to 7:30 P.M.

Oak Cleaners

invites you to visit our

NEW, MODERN CLEANING PLANT

at 113 Catalpa Royal Oak (near Main St.)

We're proud to be Michigan's most modern cleaning plant. It is our pleasure to invite you to visit us anytime. Come and see us at 113 Catalpa! We're bringing you the latest equipment in dry cleaning establishments . . . TO CLEAN YOUR CLOTHES BETTER!

every garment MONITE MOTH-PROOFED and Insured For 6 Months unless cleaned by some other method

for pick-up and delivery call . . .
Lincoln 1-1300
Midwest 4-6140